

PRODUCT INFORMATION PACKET



Model No: C4D17FK28C

Catalog No: 108322.00

1HP.1800RPM.XS56C.TEFC.12V.CONT.40C.1.0SF.RIGID C.DC NEMA LOW VOLTAGE.C4D17FK28C
Low Voltage



Regal and Leeson are trademarks of Regal Beloit Corporation or one of its affiliated companies.

©2018 Regal Beloit Corporation, All Rights Reserved. MC017097E





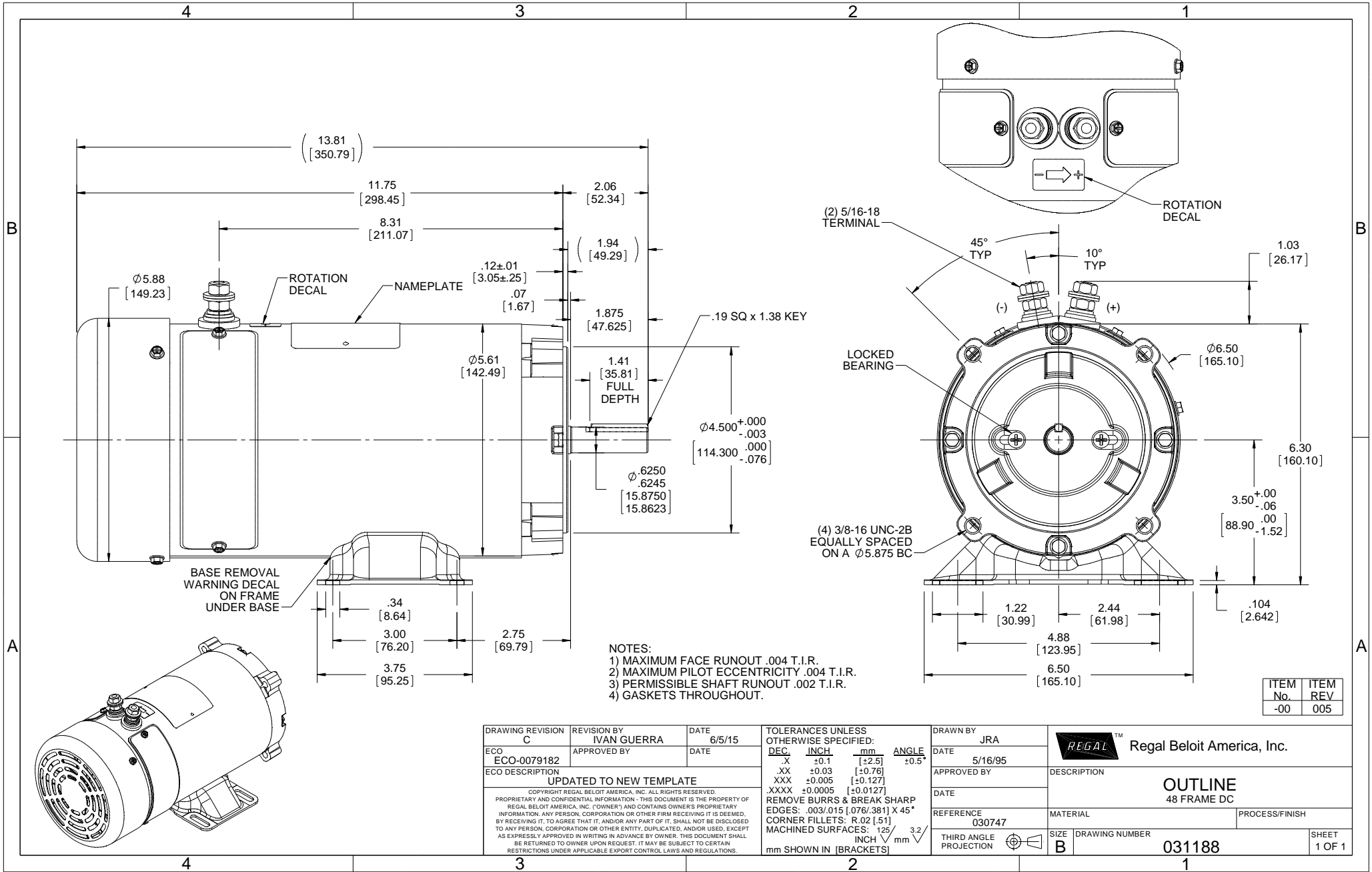
Nameplate Specifications

Output HP	1 Hp	Output KW	0.75 kW
Voltage	12 V	Current	80.0 A
Speed	1800 rpm	Service Factor	1
Efficiency	77.9 %	Duty	Continuous
Insulation Class	H	Frame	XS56C
Enclosure	Totally Enclosed Fan Cooled	Overload Protector	No
Ambient Temperature	40 °C	Drive End Bearing Size	6203
Opp Drive End Bearing Size	6203	UL	Recognized
CSA	Y	CE	N

Technical Specifications

Rotation	Reversible	Mounting	Rigid C base
Overall Length	13.81 in	Frame Length	8.50 in
Shaft Diameter	0.625 in	Shaft Extension	2.06 in
Outline Drawing	031188		

This is an uncontrolled document once printed or downloaded and is subject to change without notice. Date Created: 10/15/2018



- NOTES:
 1) MAXIMUM FACE RUNOUT .004 T.I.R.
 2) MAXIMUM PILOT ECCENTRICITY .004 T.I.R.
 3) PERMISSIBLE SHAFT RUNOUT .002 T.I.R.
 4) GASKETS THROUGHOUT.

ITEM No.	ITEM REV
-00	005

DRAWING REVISION C	REVISION BY IVAN GUERRA	DATE 6/5/15	TOLERANCES UNLESS OTHERWISE SPECIFIED: DEC. INCH mm ANGLE .X ±0.1 [+2.5] ±0.5° .XX ±0.03 [+0.76] .XXX ±0.005 [+0.127] .XXXX ±0.0005 [+0.0127] REMOVE BURRS & BREAK SHARP EDGES: .003/.015 [.076/.381] X 45° CORNER FILLETS: R.02 [.51] MACHINED SURFACES: 125 INCH/mm 3.2 mm SHOWN IN [BRACKETS]	DRAWN BY JRA	Regal Beloit America, Inc.
ECO ECO-0079182	APPROVED BY	DATE	DATE 5/16/95	DATE	
ECO DESCRIPTION UPDATED TO NEW TEMPLATE			REFERENCE 030747	APPROVED BY	DESCRIPTION OUTLINE 48 FRAME DC
<small>COPYRIGHT REGAL BELOIT AMERICA, INC. ALL RIGHTS RESERVED. PROPRIETARY AND CONFIDENTIAL INFORMATION - THIS DOCUMENT IS THE PROPERTY OF REGAL BELOIT AMERICA, INC. (OWNER) AND CONTAINS OWNER'S PROPRIETARY INFORMATION. ANY PERSON, CORPORATION OR OTHER FIRM RECEIVING IT IS DEEMED, BY RECEIVING IT, TO AGREE THAT IT, AND/OR ANY PART OF IT, SHALL NOT BE DISCLOSED TO ANY PERSON, CORPORATION OR OTHER ENTITY, DUPLICATED, AND/OR USED, EXCEPT AS EXPRESSLY APPROVED IN WRITING IN ADVANCE BY OWNER. THIS DOCUMENT SHALL BE RETURNED TO OWNER UPON REQUEST. IT MAY BE SUBJECT TO CERTAIN RESTRICTIONS UNDER APPLICABLE EXPORT CONTROL LAWS AND REGULATIONS.</small>			THIRD ANGLE PROJECTION	MATERIAL	PROCESS/FINISH
			SIZE B	DRAWING NUMBER 031188	SHEET 1 OF 1