

# PRODUCT INFORMATION PACKET



Model No: C42T17FZ17B

Catalog No: 096016.00

PE350...5:1.345/288RPM.55LBIN..33HP.42Y...AC GEARMOTORS SUB-  
FHP.230/460V.3PH.60/50HZ.TEFC.C42T17FZ17B

PE350 Series



Regal and Leeson are trademarks of Regal Beloit Corporation or one of its affiliated companies.

©2018 Regal Beloit Corporation, All Rights Reserved. MC017097E





### Nameplate Specifications

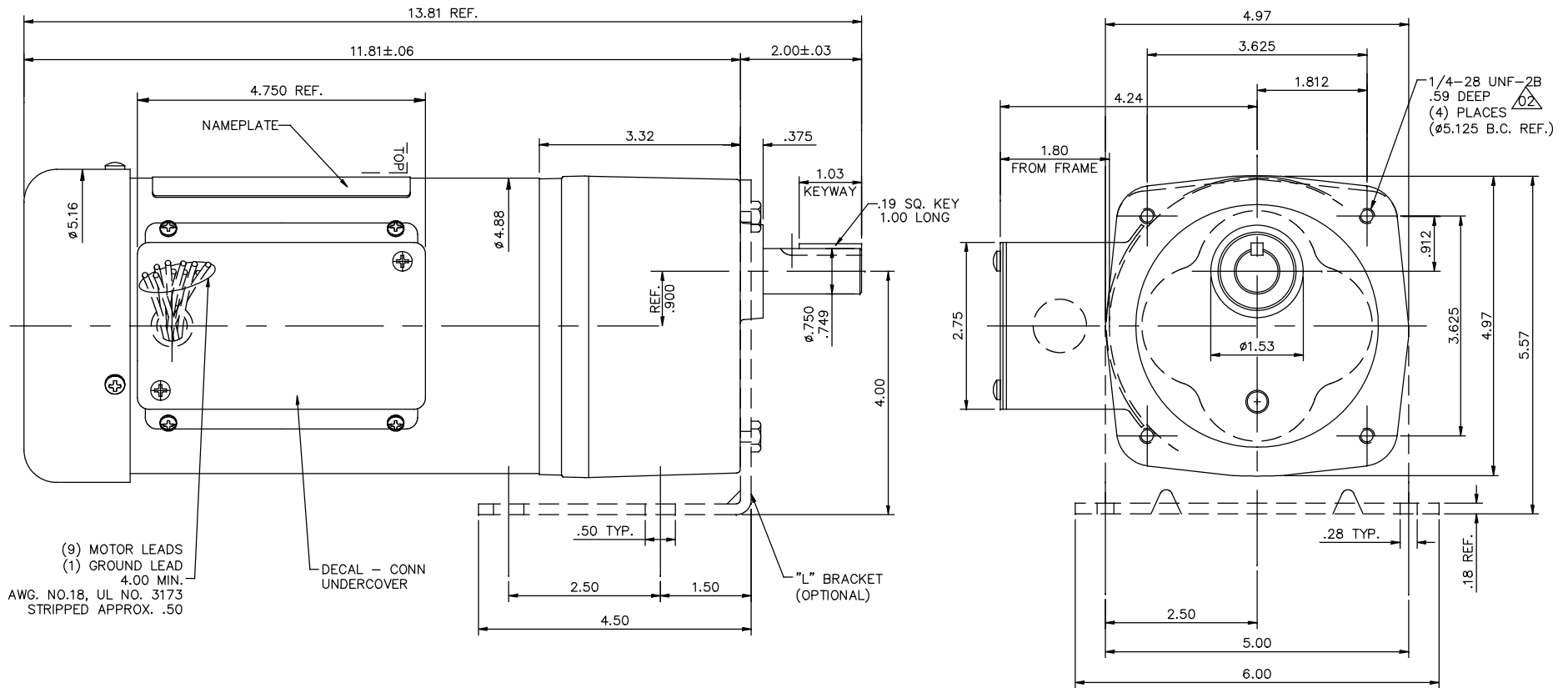
|                            |                             |                        |            |
|----------------------------|-----------------------------|------------------------|------------|
| Output HP                  | 0.33 Hp                     | Output KW              | 0.25 kW    |
| Frequency                  | 60 Hz                       | Voltage                | 230 V      |
| Current                    | 1.6/0.80 A                  | Speed                  | 345 rpm    |
| Service Factor             | 1                           | Phase                  | 3          |
| Duty                       | Continuous                  | Insulation Class       | F          |
| KVA Code                   | L                           | Frame                  | 42Y        |
| Enclosure                  | Totally Enclosed Fan Cooled | Overload Protector     | No         |
| Ambient Temperature        | 40 °C                       | Drive End Bearing Size | 6203       |
| Opp Drive End Bearing Size | 6201                        | UL                     | Recognized |
| CSA                        | Y                           | CE                     | N          |

### Technical Specifications

|                 |               |                    |           |
|-----------------|---------------|--------------------|-----------|
| Rotation        | Reversible    | Mounting           | Special   |
| Shaft Type      | Parallel      | Overall Length     | 13.81 in  |
| Frame Length    | 6.75 in       | Shaft Diameter     | 0.750 in  |
| Shaft Extension | 1.625 in      |                    |           |
| Outline Drawing | 027696-096016 | Connection Diagram | 005010.01 |

This is an uncontrolled document once printed or downloaded and is subject to change without notice. Date Created: 10/15/2018

027696



(9) MOTOR LEADS  
(1) GROUND LEAD  
4.00 MIN.  
AWG. NO.18, UL NO. 3173  
STRIPPED APPROX. .50

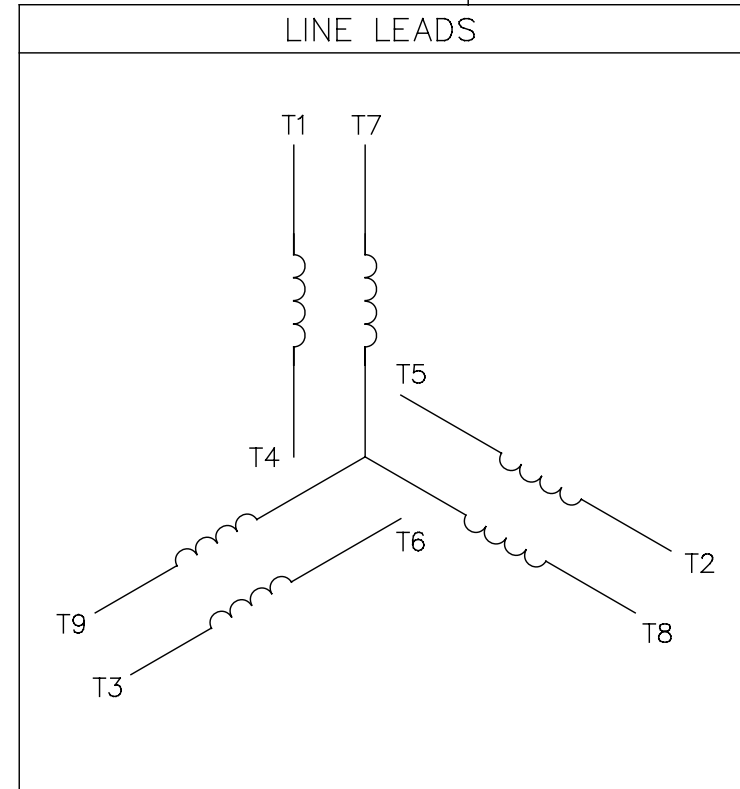
| CATALOG NUMBER | OUTPUT RPM | FULL LOAD TORQUE LB.-IN. | INPUT HP | OVERHUNG LOAD LBS. | RATIO TO 1 |
|----------------|------------|--------------------------|----------|--------------------|------------|
| 096013.00      | 58         | 320                      | 1/3      | 300                | 30         |
| 096014.00      | 85         | 218                      | 1/3      | 300                | 20         |
| 096015.00      | 173        | 109                      | 1/3      | 300                | 10         |
| 096016.00      | 345        | 55                       | 1/3      | 300                | 5          |

NOTE: WHEN USING MOUNTING BRACKET  
OHL MUST NOT EXCEED 200 LBS.

| TOLERANCES UNLESS SPECIFIED  |                                      | DEC. INCHES |         | TITLE    | DRAWN DWF 9/16/97 |
|--|--------------------------------------|-------------|---------|----------|-------------------|
| .X   | ±.1                                  | .XX         | ±.03    |          |                   |
| .02  | ±.005                                | .XXX        | ±.005   | APPD     | SCALE 5=8         |
| 01   | ADDED NOTE "DECAL - CONN UNDERCOVER" | MGM         | 4/23/03 | MAT'L    | REF 027689        |
| NO.  | REVISION                             | BY & DATE   | CHK     | FINISH   | FMF 096013        |
| THIS DRAWING IN DESIGN AND DETAIL IS OUR PROPERTY AND MUST NOT BE USED EXCEPT IN CONNECTION WITH OUR WORK ALL RIGHTS OF DESIGN AND INVENTION ARE RESERVED THIS IS AN ELECTRONICALLY GENERATED DOCUMENT - DO NOT SCALE THIS PRINT |                                      |             |         | RFP      | PREV              |
|  |                                      |             |         | CAD FILE | 027696            |
|  |                                      |             |         | SIZE     | DRAWING NO.       |
|  |                                      |             |         | B        | 027696            |
|  |                                      |             |         | DIST     | REV.              |
|  |                                      |             |         |          | 02                |

005010-01

VIEW FROM OUTSIDE OF MOTOR AT SWITCH END.



| VOLTAGE | L1    | L2    | L3    | JOIN & INSULATE               |
|---------|-------|-------|-------|-------------------------------|
| HIGH    | T1    | T2    | T3    | (T4,T7)<br>(T5,T8)<br>(T6,T9) |
| LOW     | T1,T7 | T2,T8 | T3,T9 | T4,T5,T6                      |

|  |                       |  |  |                                |          |  |          |                         |             |      |
|--|-----------------------|--|--|--------------------------------|----------|--|----------|-------------------------|-------------|------|
|  |                       |  |  | TOLERANCES<br>UNLESS SPECIFIED |          | <b>REGAL</b> ™ <b>Regal Beloit America, Inc.</b> |          | DRAWN RDW 04/12/02      |             |      |
|  |                       |  |  | DEC.                           | INCHES   |  |          | CHK                     |             |      |
|  |                       |  |  | .X                             | ±.1      |  |          | APPD                    |             |      |
|  |                       |  |  | .XX                            | ±.01     |  |          | SCALE 1=1               |             |      |
|  |                       |  |  | .XXX                           | ±.005    | TITLE  |          | EXTERNAL WIRING DIAGRAM |             |      |
|  |                       |  |  | .XXXX                          | ±.0005   | MAT'L.   |          | DECAL - 004014          |             |      |
|  |                       |  |  | ANG                            | ±1/2°    | FINISH   |          | REF FIG.2-51            |             |      |
| A  | UPDATED TO REGAL LOGO |  |  | SAJ                            | 06/26/15 | AJY  | .XXXX    | ±.0005                  | FMF         |      |
| NO.  | REVISION              |  |  | BY & DATE                      | CHK      | ANG  | ±1/2°    | FINISH                  | PREV        |      |
| THIS DRAWING IN DESIGN AND DETAIL IS OUR PROPERTY AND MUST NOT BE USED EXCEPT IN CONNECTION WITH OUR WORK ALL RIGHTS OF DESIGN AND INVENTION ARE RESERVED THIS IS AN ELECTRONICALLY GENERATED DOCUMENT - DO NOT SCALE THIS PRINT |                       |  |  | RFP                            | 04/12/02 | CAD FILE   | 00501001 | SIZE                    | DRAWING NO. | REV. |
|  |                       |  |  | DIST                           | BRF-NLV  |  |          | A                       | 005010-01   | A    |