

PRODUCT INFORMATION PACKET



Model No: C42T17FZ16B

Catalog No: 096015.00

PE350...10:1.173/144RPM.109LBIN..33HP.42Y...AC GEARMOTORS SUB-
FHP.230/460V.3PH.60/50HZ.TEFC.C42T17FZ16B

PE350 Series



Regal and Leeson are trademarks of Regal Beloit Corporation or one of its affiliated companies.

©2018 Regal Beloit Corporation, All Rights Reserved. MC017097E





Nameplate Specifications

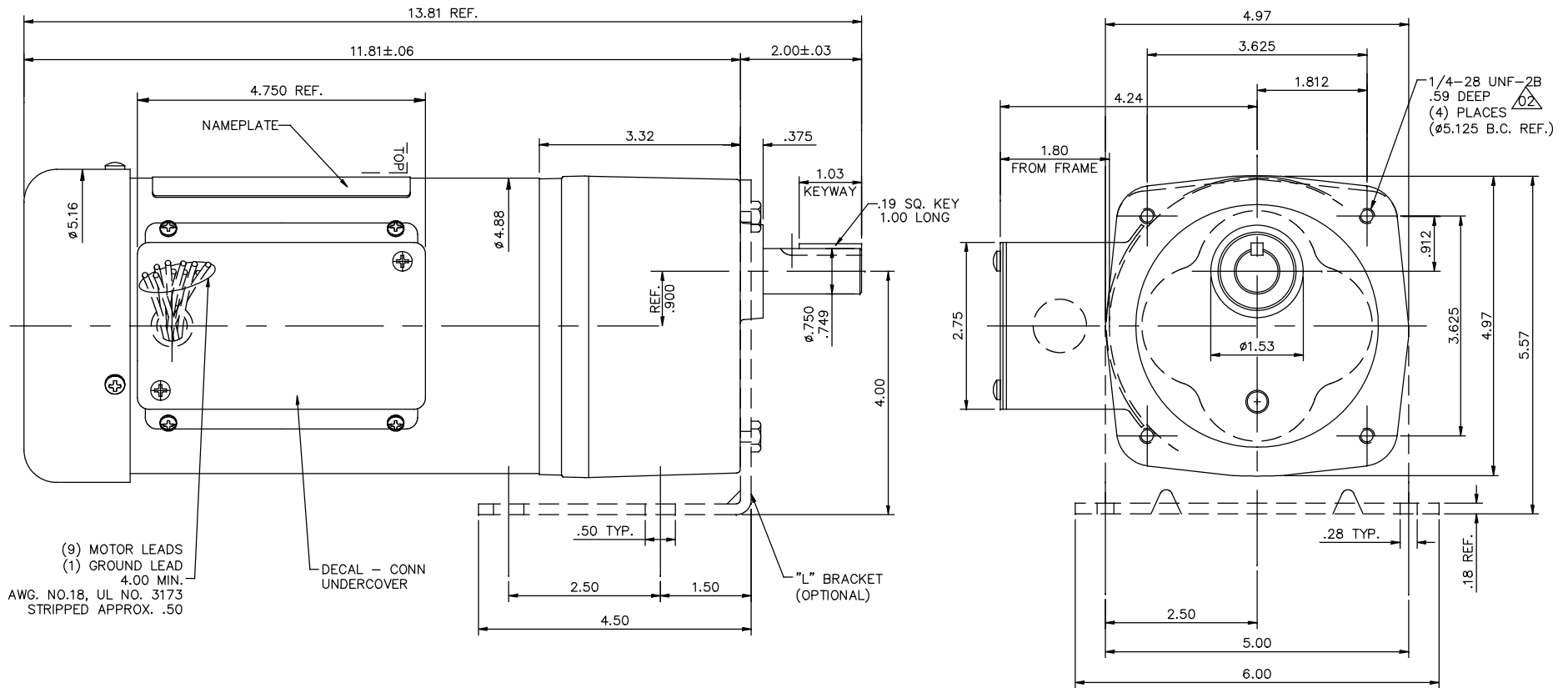
Output HP	0.33 Hp	Output KW	0.25 kW
Frequency	60 Hz	Voltage	230 V
Current	1.6/0.80 A	Speed	173 rpm
Service Factor	1	Phase	3
Duty	Continuous	Insulation Class	F
KVA Code	L	Frame	42Y
Enclosure	Totally Enclosed Fan Cooled	Overload Protector	No
Ambient Temperature	40 °C	Drive End Bearing Size	6203
Opp Drive End Bearing Size	6201	UL	Recognized
CSA	Y	CE	N

Technical Specifications

Rotation	Reversible	Mounting	Special
Shaft Type	Parallel	Overall Length	13.81 in
Frame Length	6.75 in	Shaft Diameter	0.750 in
Shaft Extension	1.625 in		
Outline Drawing	027696-096015	Connection Diagram	005010.01


This is an uncontrolled document once printed or downloaded and is subject to change without notice. Date Created: 10/15/2018

027696



CATALOG NUMBER	OUTPUT RPM	FULL LOAD TORQUE LB.-IN.	INPUT HP	OVERHUNG LOAD LBS.	RATIO TO 1
096013.00	58	320	1/3	300	30
096014.00	85	218	1/3	300	20
096015.00	173	109	1/3	300	10
096016.00	345	55	1/3	300	5

NOTE: WHEN USING MOUNTING BRACKET OHL MUST NOT EXCEED 200 LBS.

		TOLERANCES UNLESS SPECIFIED		 ELECTRIC MOTORS GEARMOTORS AND DRIVES	DRAWN	DWF
		DEC.	INCHES		CHK	DWF
		.X	±.1	TITLE		
		.XX	±.03	OUTLINE - 42 FRAME		
02	THREAD DEPTH WAS .63"	.XXX	±.005	PE350 STOCK	SCALE	5=8
01	ADDED NOTE "DECAL - CONN UNDERCOVER"	MGM	4/23/03	MAT'L	REF	027689
NO.	REVISION	BY & DATE	CHK	ANG	FINISH	PREV
			RFP	±1/2"	LEESON STOCK	
THIS DRAWING IN DESIGN AND DETAIL IS OUR PROPERTY AND MUST NOT BE USED EXCEPT IN CONNECTION WITH OUR WORK. ALL RIGHTS OF DESIGN AND INVENTION ARE RESERVED. THIS IS AN ELECTRONICALLY GENERATED DOCUMENT - DO NOT SCALE THIS PRINT				CAD FILE	027696	REV.
				DIST	SIZE	DRAWING NO.
					B	027696
						02

005010-01

VIEW FROM OUTSIDE OF MOTOR AT SWITCH END.



VOLTAGE	L1	L2	L3	JOIN & INSULATE
HIGH	T1	T2	T3	(T4,T7) (T5,T8) (T6,T9)
LOW	T1,T7	T2,T8	T3,T9	T4,T5,T6

				TOLERANCES UNLESS SPECIFIED		Regal Beloit America, Inc.		DRAWN RDW 04/12/02		
				DEC.	INCHES			CHK		
				.X	±.1			APPD		
				.XX	±.01			SCALE 1=1		
				.XXX	±.005	REF FIG.2-51				
A	UPDATED TO REGAL LOGO		SAJ 06/26/15	AJY	.XXXX ±.0005	MAT'L. DECAL - 004014		FMF		
NO.	REVISION		BY & DATE	CHK	ANG ±1/2"	FINISH		PREV		
THIS DRAWING IN DESIGN AND DETAIL IS OUR PROPERTY AND MUST NOT BE USED EXCEPT IN CONNECTION WITH OUR WORK ALL RIGHTS OF DESIGN AND INVENTION ARE RESERVED THIS IS AN ELECTRONICALLY GENERATED DOCUMENT - DO NOT SCALE THIS PRINT				RFP	04/12/02	CAD FILE 00501001		SIZE	DRAWING NO.	REV.
				DIST BRF-NLV				A	005010-01	A