

PRODUCT INFORMATION PACKET



Model No: C42T17FZ14B

Catalog No: 096013.00

PE350...30:1.58/48RPM.320LBIN..33HP.42Y...AC GEARMOTORS SUB
FHP.230/460V.3PH.60/50HZ.TEFC.C42T17FZ14B

PE350 Series



Regal and Leeson are trademarks of Regal Beloit Corporation or one of its affiliated companies.

©2018 Regal Beloit Corporation, All Rights Reserved. MC017097E





Nameplate Specifications

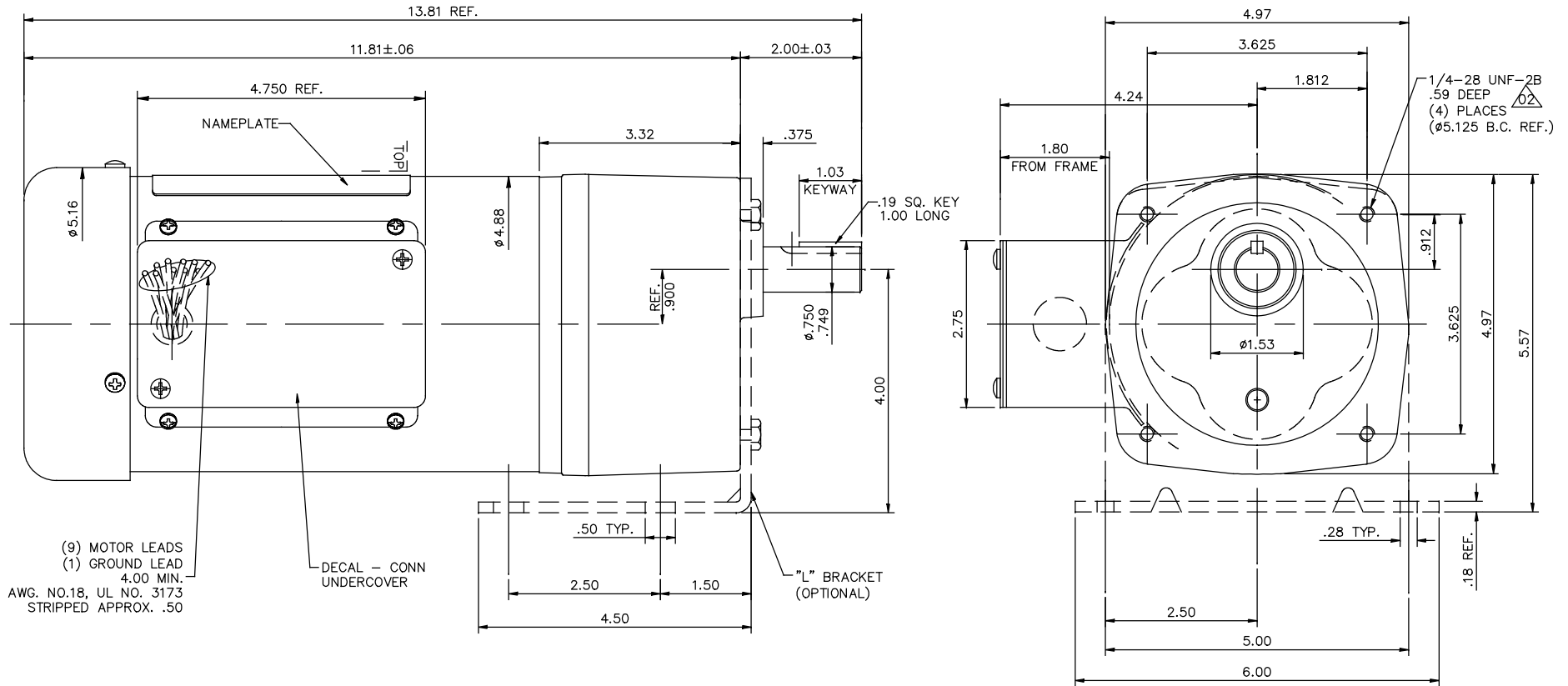
Output HP	0.33 Hp	Output KW	0.25 kW
Frequency	60 Hz	Voltage	230 V
Current	1.6/0.80 A	Speed	58 rpm
Service Factor	1	Phase	3
Duty	Continuous	Insulation Class	F
KVA Code	L	Frame	42Y
Enclosure	Totally Enclosed Fan Cooled	Overload Protector	No
Ambient Temperature	40 °C	Drive End Bearing Size	6203
Opp Drive End Bearing Size	6201	UL	Recognized
CSA	Y	CE	N

Technical Specifications

Rotation	Reversible	Mounting	Special
Shaft Type	Parallel	Overall Length	13.81 in
Frame Length	6.75 in	Shaft Diameter	0.750 in
Shaft Extension	1.625 in		
Outline Drawing	027696-096013	Connection Diagram	005010.01

This is an uncontrolled document once printed or downloaded and is subject to change without notice. Date Created: 10/15/2018

027696



CATALOG NUMBER	OUTPUT RPM	FULL LOAD TORQUE LB.-IN.	INPUT HP	OVERHUNG LOAD LBS.	RATIO TO 1
096013.00	58	320	1/3	300	30
096014.00	85	218	1/3	300	20
096015.00	173	109	1/3	300	10
096016.00	345	55	1/3	300	5

NOTE: WHEN USING MOUNTING BRACKET OHL MUST NOT EXCEED 200 LBS.

TOLERANCES UNLESS SPECIFIED		DEC. INCHES		TITLE	ELECTRIC MOTORS GEARMOTORS AND DRIVES	DRAWN DWF 9/16/97	
DEC.	INCHES	XX	±.03				CHK DWF 9/25/97
02	THREAD DEPTH WAS .63"	JD	06/06/17	.XXX	±.005	APPD	
01	ADDED NOTE "DECAL - CONN UNDERCOVER"	MGM	4/23/03	.XXXX	±.0005	SCALE 5=8	
NO.	REVISION	BY & DATE	CHK	ANG	±1/2"	REF 027689	
THIS DRAWING IN DESIGN AND DETAIL IS OUR PROPERTY AND MUST NOT BE USED EXCEPT IN CONNECTION WITH OUR WORK ALL RIGHTS OF DESIGN AND INVENTION ARE RESERVED THIS IS AN ELECTRONICALLY GENERATED DOCUMENT - DO NOT SCALE THIS PRINT				RFP	CAD FILE	027696	SIZE B
				FINISH	LEESON STOCK	PREV	DRAWING NO. 027696
				DIST			REV. 02

005010-01

VIEW FROM OUTSIDE OF MOTOR AT SWITCH END.



VOLTAGE	L1	L2	L3	JOIN & INSULATE
HIGH	T1	T2	T3	(T4,T7) (T5,T8) (T6,T9)
LOW	T1,T7	T2,T8	T3,T9	T4,T5,T6

				TOLERANCES UNLESS SPECIFIED		REGAL ™ Regal Beloit America, Inc.		DRAWN RDW 04/12/02			
				DEC.	INCHES			CHK			
				.X	±.1			APPD			
				.XX	±.01			SCALE 1=1			
				.XXX	±.005	TITLE		REF FIG.2-51			
A	UPDATED TO REGAL LOGO	SAJ 06/26/15	AJY	.XXXX	±.0005	MAT'L		FMF			
NO.	REVISION	BY & DATE	CHK	ANG	±1/2"	FINISH		PREV			
THIS DRAWING IN DESIGN AND DETAIL IS OUR PROPERTY AND MUST NOT BE USED EXCEPT IN CONNECTION WITH OUR WORK ALL RIGHTS OF DESIGN AND INVENTION ARE RESERVED THIS IS AN ELECTRONICALLY GENERATED DOCUMENT - DO NOT SCALE THIS PRINT				RFP	04/12/02	CAD FILE		00501001	SIZE	DRAWING NO.	REV.
				DIST		BRF-NLV		A	005010-01	A	