

# PRODUCT INFORMATION PACKET



Model No: C42C34NB2F

Catalog No: 092013.00

1/4HP..3450RPM.NAN.TENV.115/208-230V.1PH.60HZ.CONT.NOT.40C.1.0SF.RIGID.GENERAL  
PURPOSE.C42C34NB2F

Totally Enclosed Non-Ventilated (TENV)



Regal and Leeson are trademarks of Regal Beloit Corporation or one of its affiliated companies.

©2018 Regal Beloit Corporation, All Rights Reserved. MC017097E





**Nameplate Specifications**

Output HP	<b>0.25 Hp</b>	Output KW	<b>0.19 kW</b>
Frequency	<b>60 Hz</b>	Voltage	<b>115/208-230 V</b>
Current	<b>3.4/1.7 A</b>	Speed	<b>3450 rpm</b>
Service Factor	<b>1</b>	Phase	<b>1</b>
Efficiency	<b>63 %</b>	Duty	<b>Continuous</b>
Insulation Class	<b>B</b>	Design Code	<b>NO DESIGN CODE</b>
KVA Code	<b>L</b>	Frame	<b>42</b>
Enclosure	<b>Totally Enclosed Non Ventilated</b>	Overload Protector	<b>No</b>
Ambient Temperature	<b>40 °C</b>	Drive End Bearing Size	<b>6203</b>
Opp Drive End Bearing Size	<b>6203</b>	UL	<b>Recognized</b>
CSA	<b>Y</b>	CE	<b>N</b>
IP Code	<b>43</b>		

**Technical Specifications**

Electrical Type	<b>Capacitor Start Induction Run</b>	Starting Method	<b>Across The Line</b>
Poles	<b>2</b>	Rotation	<b>Selective Counterclockwise</b>
Mounting	<b>Rigid base</b>	Motor Orientation	<b>HORIZONTAL</b>
Drive End Bearing	<b>BALL</b>	Opp Drive End Bearing	<b>BALL</b>
Frame Material	<b>Rolled Steel</b>	Shaft Type	<b>T</b>
Overall Length	<b>10.56 in</b>	Frame Length	<b>7.50 in</b>
Shaft Diameter	<b>0.375 in</b>	Shaft Extension	<b>1.12 in</b>
Assembly/Box Mounting	<b>F1 ONLY</b>		
Outline Drawing	<b>027516-V42</b>	Connection Diagram	<b>005312.01</b>

**This is an uncontrolled document once printed or downloaded and is subject to change without notice. Date Created: 10/15/2018**

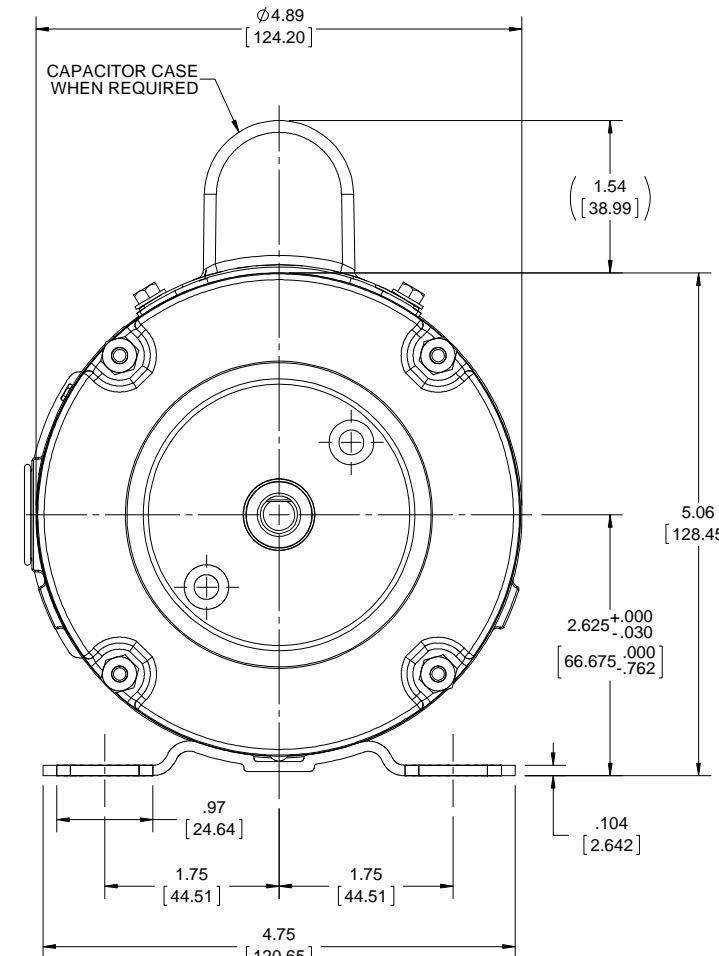
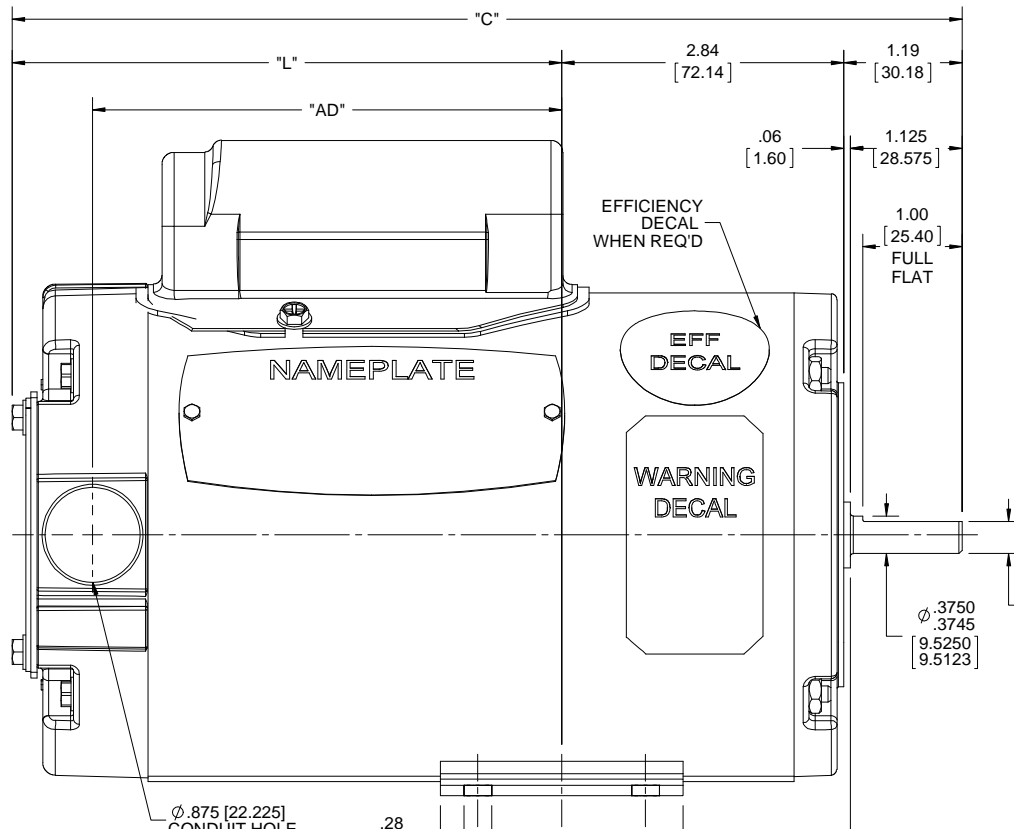
4

3

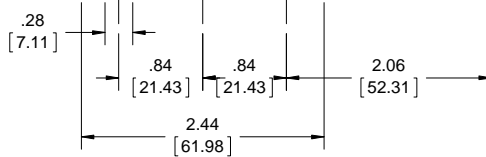
Uncontrolled Copy

2

1



FRAME	"C"	"L"	"AD"
G42	7.56 [192.02]	3.53 [89.66]	2.72 [69.08]
H42	7.81 [198.37]	3.78 [96.01]	2.97 [75.43]
J42	8.06 [204.72]	4.03 [102.36]	3.22 [81.78]
K42	8.31 [211.07]	4.28 [108.71]	3.47 [88.13]
L42	8.56 [217.42]	4.53 [115.06]	3.72 [94.48]
M42	8.81 [223.77]	4.78 [121.41]	3.97 [100.83]
N42	9.06 [230.12]	5.03 [127.76]	4.22 [107.18]
P42	9.31 [236.47]	5.28 [134.11]	4.47 [113.53]
R42	9.56 [242.82]	5.53 [140.46]	4.72 [119.88]
T42	9.81 [249.17]	5.78 [146.81]	4.97 [126.23]
U42	10.06 [255.52]	6.03 [153.16]	5.22 [132.58]
UV42	10.31 [261.87]	6.28 [159.51]	5.47 [138.93]
V42	10.56 [268.46]	6.53 [165.86]	5.72 [145.28]



NOTE:-  
1) GASKETS THROUGHOUT.

DRAWING REVISION D	REVISION BY A.SUPPANAVAR	DATE 02/02/2018
ECO ECO-0143018	APPROVED BY PK	DATE 04/10/2018
ECO DESCRIPTION OUTLINE CONVERSION PROJECT		
<small>COPYRIGHT REGAL BELOIT AMERICA, INC. ALL RIGHTS RESERVED.          PROPRIETARY AND CONFIDENTIAL INFORMATION - THIS DOCUMENT IS THE PROPERTY OF          REGAL BELOIT AMERICA, INC. (OWNER) AND CONTAINS OWNER'S PROPRIETARY          INFORMATION. ANY PERSON, CORPORATION OR OTHER FIRM RECEIVING IT IS DEEMED,          BY RECEIVING IT, TO AGREE THAT IT, AND/OR ANY PART OF IT, SHALL NOT BE DISCLOSED          TO ANY PERSON, CORPORATION OR OTHER ENTITY, DUPLICATED, AND/OR USED, EXCEPT          AS EXPRESSLY APPROVED IN WRITING IN ADVANCE BY OWNER. THIS DOCUMENT SHALL          BE RETURNED TO OWNER UPON REQUEST. IT MAY BE SUBJECT TO CERTAIN          RESTRICTIONS UNDER APPLICABLE EXPORT CONTROL LAWS AND REGULATIONS.</small>		

TOLERANCES UNLESS OTHERWISE SPECIFIED:			
DEC.	INCH	mm	ANGLE
.X	+0.1	[+2.5]	±0.5°
.XX	+0.01	[+0.25]	
.XXX	+0.005	[+0.127]	
.XXXX	+0.0005	[±0.0127]	
REMOVE BURRS & BREAK SHARP EDGES: .003/.015 [0.076/.381] X 45°			
CORNER FILLETS: R.02 [51]			
MACHINED SURFACES: 125/3.2			
mm SHOWN IN [BRACKETS]			

DRAWN BY RT	DATE 09/05/89
APPROVED BY DJW	DATE 09/05/89
REFERENCE 027516	THIRD ANGLE PROJECTION

Regal Beloit America, Inc.	
DESCRIPTION <b>OUTLINE</b> 42 FRAME RIGID-T.E.N.V.	
MATERIAL	PROCESS/FINISH STANDARD
SIZE B	DRAWING NUMBER 027516
SHEET 1 OF 1	

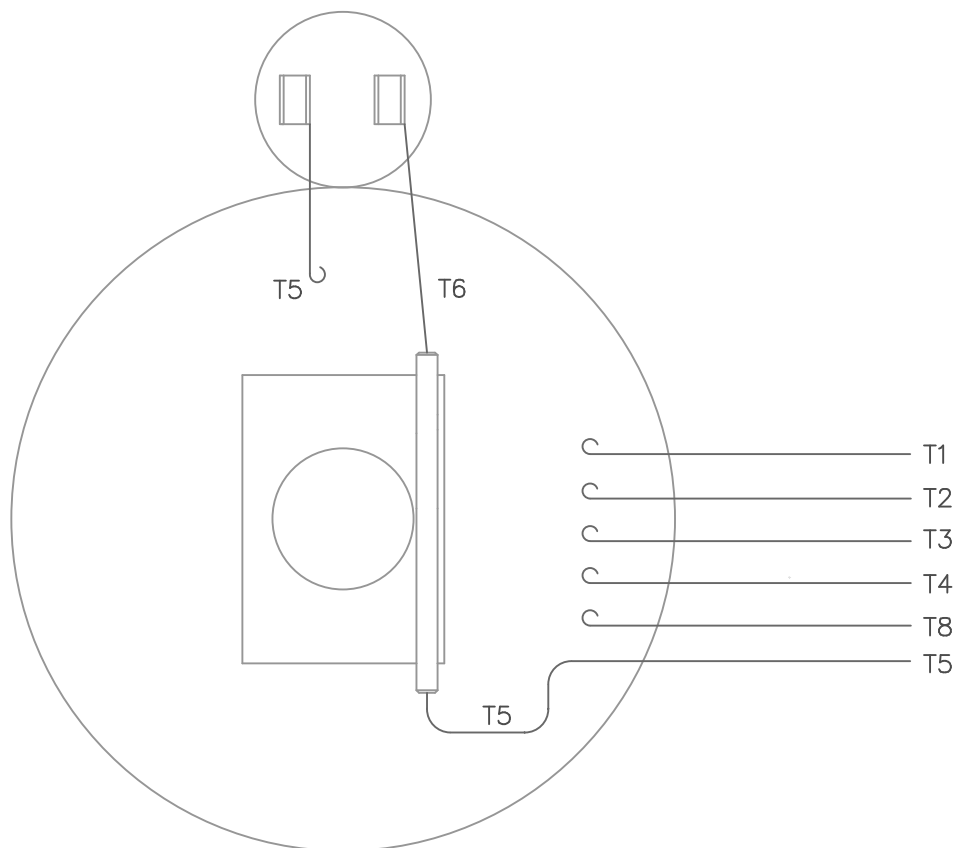
4

3

2

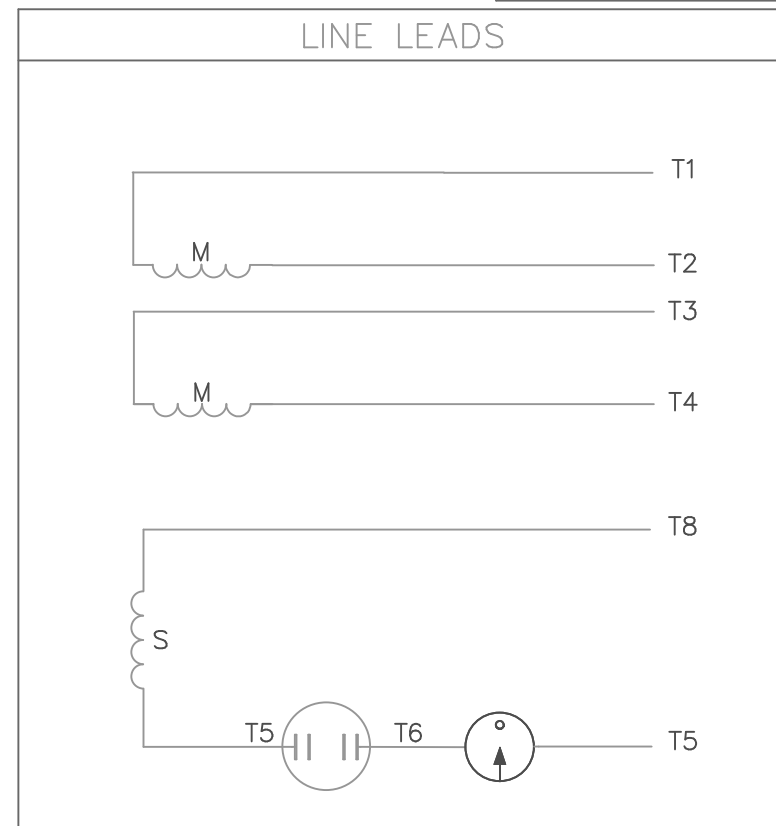
1

VIEW FROM OUTSIDE OF MOTOR AT SWITCH END.



ALL CONNECTIONS ON STATIONARY SWITCH ARE SOLDERED

GEARMOTORS  
2-STAGE REF. DECAL 004012  
3-STAGE REF. DECAL 081062



	ROTATION FACING LEAD END	L1	L2	JOIN
HIGH VOLT	C.C.W.	T1	T4 T5	T2, T3 T8
	C.W.	T1	T4 T8	T2, T3 T5
LOW VOLT	C.C.W.	T1, T3 T8	T2, T4 T5	---
	C.W.	T1, T3 T5	T2, T4 T8	---

NO.	REVISION	BY	DATE	FRACTIONS	±
06	ADDED GEARMOTOR NOTE	KMM	04/04/02	TOLERANCES UNLESS OTHERWISE SPECIFIED	
05	UPDATED TO CURRENT STANDARDS	MDN	2/16/00		
04	ADDED PAGE 6	PG	4/5/94	DECIMALS	
03	ADDED PAGE 4 AND 5	MJS	4/7/93	.00	± .01
02	CHANGED TO SOLDERED LEADS	KAZ	7/2/92	.000	± .005
01	ADDED PAGE 2 AND 3	DLL	8/23/90	.0000	± .0005
					± 1/64
				ANGLES	± 1/2°
				INCH/MM	

**LEESON** ELECTRIC CORPORATION

DRAWN	GS 8/14/89	TITLE	EXT. WIRING DIAGRAM
CH'K'D.	DLL 8/22/89		TYPE "C" W/O PROTECTOR
APPR.	DJW 8/22/89	MAT'L.	42 - FRAME
SCALE	1=1		DECAL - 004012
REF.	005005-19	FINISH	STANDARD
FMF		SIZE	A
		DRAWING NO.	005312-01