

PRODUCT INFORMATION PACKET



Model No: C42C34NB1F

Catalog No: 092011.00

..1/6HP..3450RPM.42.TENV.115/208-230V.1PH.60HZ.CONT.40C.1.0SF.RIGID.C42C34NB1F.....GENERAL PURPOSE.NOT.....

Totally Enclosed Non-Ventilated (TENV)



Regal and Leeson are trademarks of Regal Beloit Corporation or one of its affiliated companies.

©2018 Regal Beloit Corporation, All Rights Reserved. MC017097E





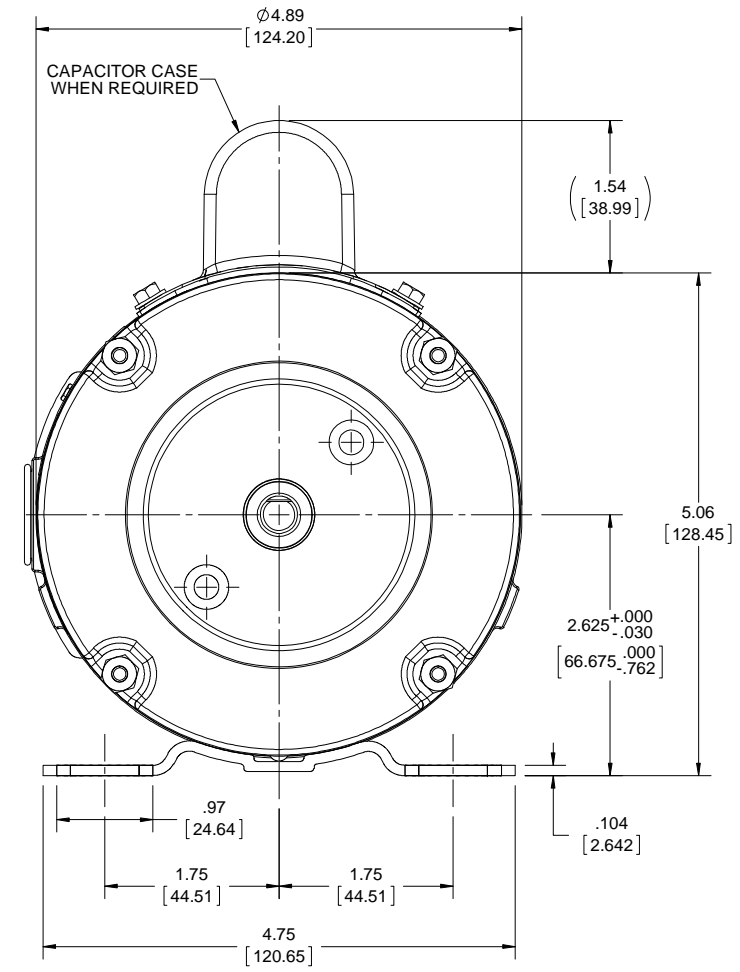
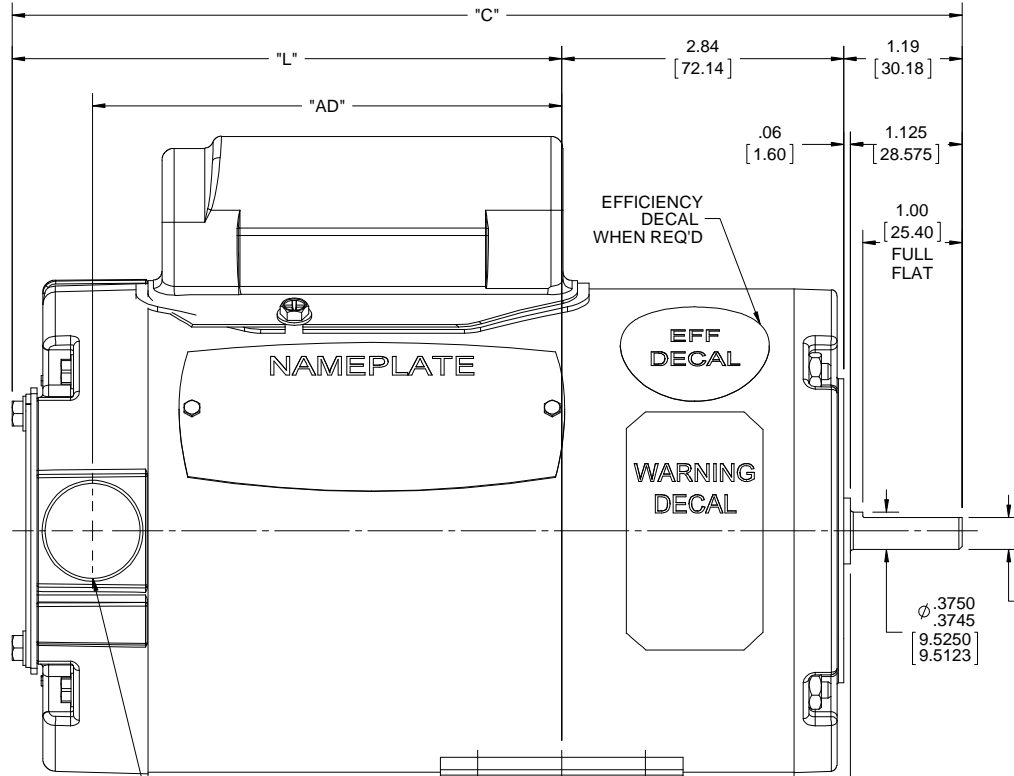
Nameplate Specifications

Output HP	0.17 Hp	Output KW	0.13 kW
Frequency	60 Hz	Voltage	115/208-230 V
Current	2.5/1.3 A	Speed	3450 rpm
Service Factor	1	Phase	1
Efficiency	60 %	Duty	Continuous
Insulation Class	B	Design Code	NO DESIGN CODE
KVA Code	N	Frame	42
Enclosure	Totally Enclosed Non Ventilated	Overload Protector	No
Ambient Temperature	40 °C	Drive End Bearing Size	6203
Opp Drive End Bearing Size	6203	UL	Recognized
CSA	Y	CE	N
IP Code	43		

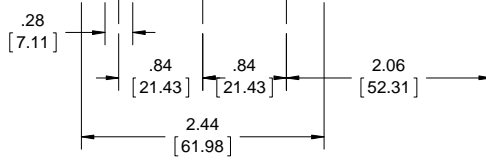
Technical Specifications

Electrical Type	Capacitor Start Induction Run	Starting Method	Across The Line
Poles	2	Rotation	Selective Counterclockwise
Mounting	Rigid base	Motor Orientation	HORIZONTAL
Drive End Bearing	BALL	Opp Drive End Bearing	BALL
Frame Material	Rolled Steel	Shaft Type	Single Special Extension
Overall Length	9.56 in	Frame Length	6.50 in
Shaft Diameter	0.375 in	Shaft Extension	1.12 in
Assembly/Box Mounting	F1 ONLY		
Outline Drawing	027516-R42	Connection Diagram	005312.01

This is an uncontrolled document once printed or downloaded and is subject to change without notice. Date Created: 10/15/2018



FRAME	"C"	"L"	"AD"
G42	7.56 [192.02]	3.53 [89.66]	2.72 [69.08]
H42	7.81 [198.37]	3.78 [96.01]	2.97 [75.43]
J42	8.06 [204.72]	4.03 [102.36]	3.22 [81.78]
K42	8.31 [211.07]	4.28 [108.71]	3.47 [88.13]
L42	8.56 [217.42]	4.53 [115.06]	3.72 [94.48]
M42	8.81 [223.77]	4.78 [121.41]	3.97 [100.83]
N42	9.06 [230.12]	5.03 [127.76]	4.22 [107.18]
P42	9.31 [236.47]	5.28 [134.11]	4.47 [113.53]
R42	9.56 [242.82]	5.53 [140.46]	4.72 [119.88]
T42	9.81 [249.17]	5.78 [146.81]	4.97 [126.23]
U42	10.06 [255.52]	6.03 [153.16]	5.22 [132.58]
UV42	10.31 [261.87]	6.28 [159.51]	5.47 [138.93]
V42	10.56 [268.46]	6.53 [165.86]	5.72 [145.28]



NOTE:-
1) GASKETS THROUGHOUT.

DRAWING REVISION D	REVISION BY A.SUPPANAVAR	DATE 02/02/2018
ECO ECO-0143018	APPROVED BY PK	DATE 04/10/2018
ECO DESCRIPTION OUTLINE CONVERSION PROJECT		
<small>COPYRIGHT REGAL BELOIT AMERICA, INC. ALL RIGHTS RESERVED. PROPRIETARY AND CONFIDENTIAL INFORMATION - THIS DOCUMENT IS THE PROPERTY OF REGAL BELOIT AMERICA, INC. (OWNER) AND CONTAINS OWNER'S PROPRIETARY INFORMATION. ANY PERSON, CORPORATION OR OTHER FIRM RECEIVING IT IS DEEMED, BY RECEIVING IT, TO AGREE THAT IT, AND/OR ANY PART OF IT, SHALL NOT BE DISCLOSED TO ANY PERSON, CORPORATION OR OTHER ENTITY, DUPLICATED, AND/OR USED, EXCEPT AS EXPRESSLY APPROVED IN WRITING IN ADVANCE BY OWNER. THIS DOCUMENT SHALL BE RETURNED TO OWNER UPON REQUEST. IT MAY BE SUBJECT TO CERTAIN RESTRICTIONS UNDER APPLICABLE EXPORT CONTROL LAWS AND REGULATIONS.</small>		

TOLERANCES UNLESS OTHERWISE SPECIFIED:
 DEC. INCH mm ANGLE
 .X ±0.1 [+2.5] ±0.5°
 .XX ±0.01 [+0.25]
 .XXX ±0.005 [+0.127]
 .XXXX ±0.0005 [+0.0127]
 REMOVE BURRS & BREAK SHARP
 EDGES: .003/.015 [0.076/.381] X 45°
 CORNER FILLETS: R.02 [51]
 MACHINED SURFACES: 125/3.2
 INCH mm
 mm SHOWN IN [BRACKETS]

DRAWN BY
RT
DATE
09/05/89
APPROVED BY
DJW
DATE
09/05/89
REFERENCE
027516
THIRD ANGLE PROJECTION

REGAL™ Regal Beloit America, Inc.

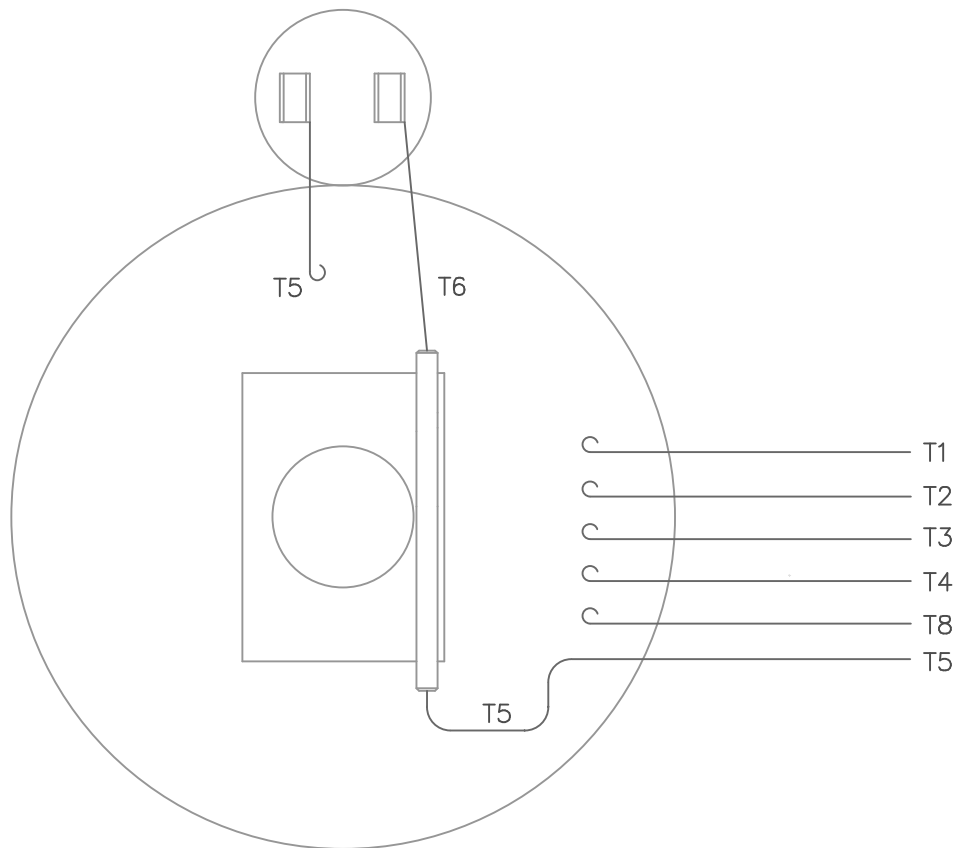
DESCRIPTION
OUTLINE
42 FRAME RIGID-T.E.N.V.

MATERIAL PROCESS/FINISH
STANDARD

SIZE B DRAWING NUMBER
027516

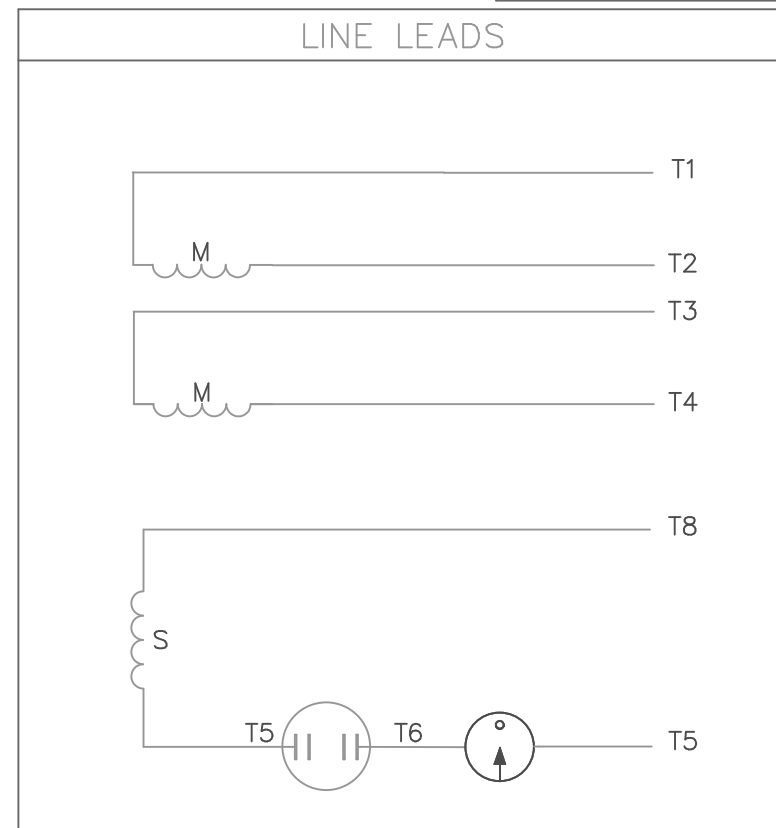
SHEET
1 OF 1

VIEW FROM OUTSIDE OF MOTOR AT SWITCH END.



ALL CONNECTIONS ON STATIONARY SWITCH ARE SOLDERED

GEARMOTORS
2-STAGE REF. DECAL 004012
3-STAGE REF. DECAL 081062



	ROTATION FACING LEAD END	L1	L2	JOIN
HIGH VOLT	C.C.W.	T1	T4 T5	T2, T3 T8
	C.W.	T1	T4 T8	T2, T3 T5
LOW VOLT	C.C.W.	T1, T3 T8	T2, T4 T5	---
	C.W.	T1, T3 T5	T2, T4 T8	---

NO.	REVISION	BY	DATE	FRACTIONS	± 1/64	SCALE	1=1
06	ADDED GEARMOTOR NOTE	KMM	04/04/02	TOLERANCES UNLESS OTHERWISE SPECIFIED			
05	UPDATED TO CURRENT STANDARDS	MDN	2/16/00				
04	ADDED PAGE 6	PG	4/5/94	DECIMALS			
03	ADDED PAGE 4 AND 5	MJS	4/7/93	.00	± .01	DRAWN	GS 8/14/89
02	CHANGED TO SOLDERED LEADS	KAZ	7/2/92	.000	± .005	CH'K'D.	DLL 8/22/89
01	ADDED PAGE 2 AND 3	DLL	8/23/90	.0000	± .0005	APPR.	DJW 8/22/89
				ANGLES	± 1/2°	REF.	005005-19
				INCH/MM		FMF	

LEESON ELECTRIC CORPORATION

TITLE	EXT. WIRING DIAGRAM TYPE "C" W/O PROTECTOR		
MAT'L.	42 - FRAME DECAL - 004012		
FINISH	STANDARD	SIZE	A
DRAWING NO.	005312-01		



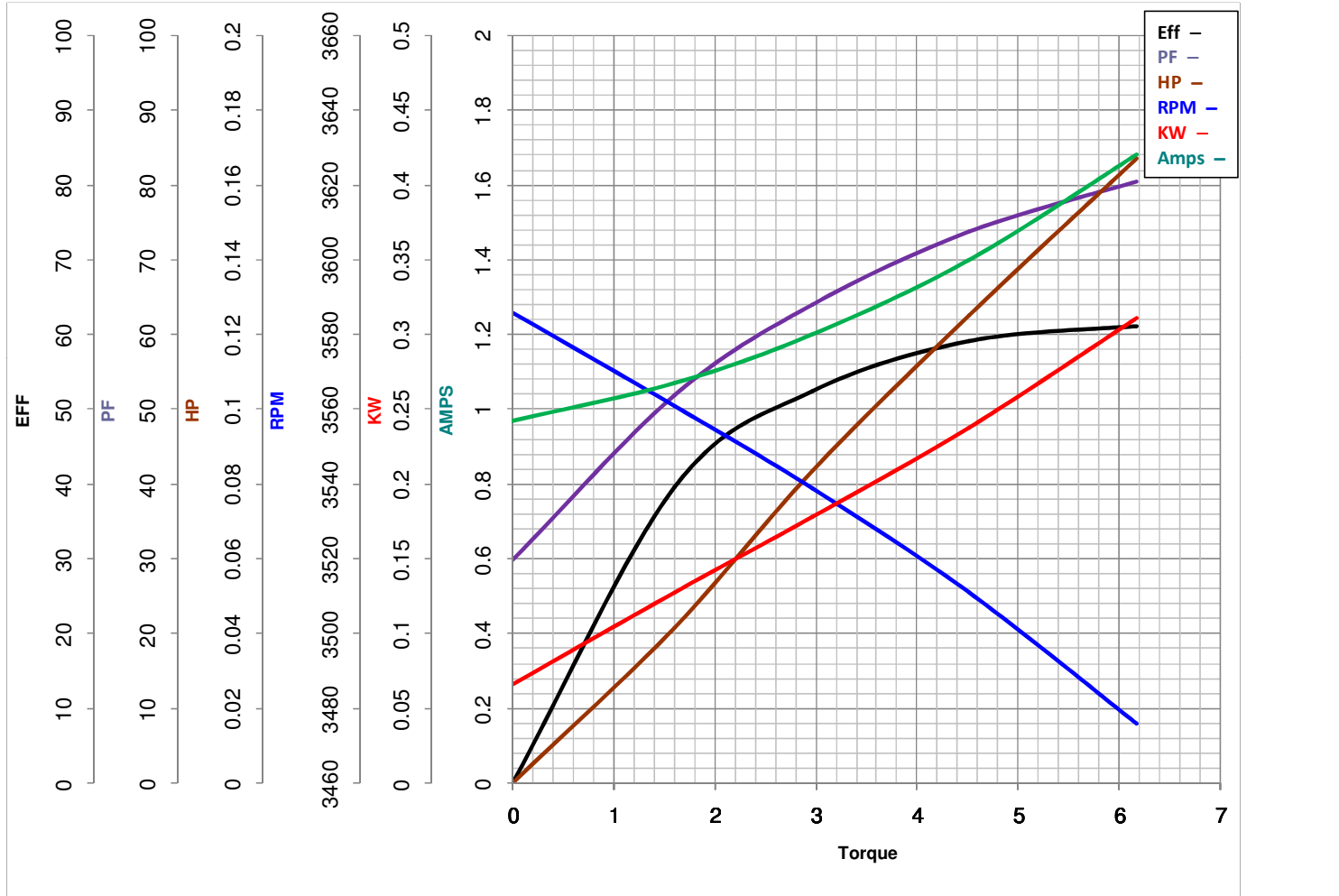
LEESON ELECTRIC CORPORATION
 TYPICAL PERFORMANCE CURVE for AC MOTOR

Model No 092011.00

Catalog No 092011.00

Curve at 230 Volts HP 0.18 PHASE 1
60 HZ
0.167 HP VOLTS 115/208-230

HZ 60 RPM 3450



FL TORQUE	<u>6.16</u> Oz.Ft	FL AMPS	<u>2.5/1.25</u>
BD TORQUE	<u>11.0</u> Oz.Ft	PU TORQUE	<u>7.8</u> Oz.Ft
LR TORQUE	<u>15.17</u> Oz.Ft	LR AMPS	<u>8.22</u>
WINDING	C4728-3	Date	3/22/2018