

PRODUCT INFORMATION PACKET



Model No: SVB2074H

Catalog No: SVB2074H

HP 2 speed Evaporator Coil and Refrigeration Fan HVAC/R Motor, 1 phase, 1800/1200 RPM, 230 V, 56Z Frame, ODP
Evap Coil and Refrigeration Fan Motors



Regal and Century are trademarks of Regal Beloit Corporation or one of its affiliated companies.

©2019 Regal Beloit Corporation, All Rights Reserved. MC017097E

REGAL



Nameplate Specifications

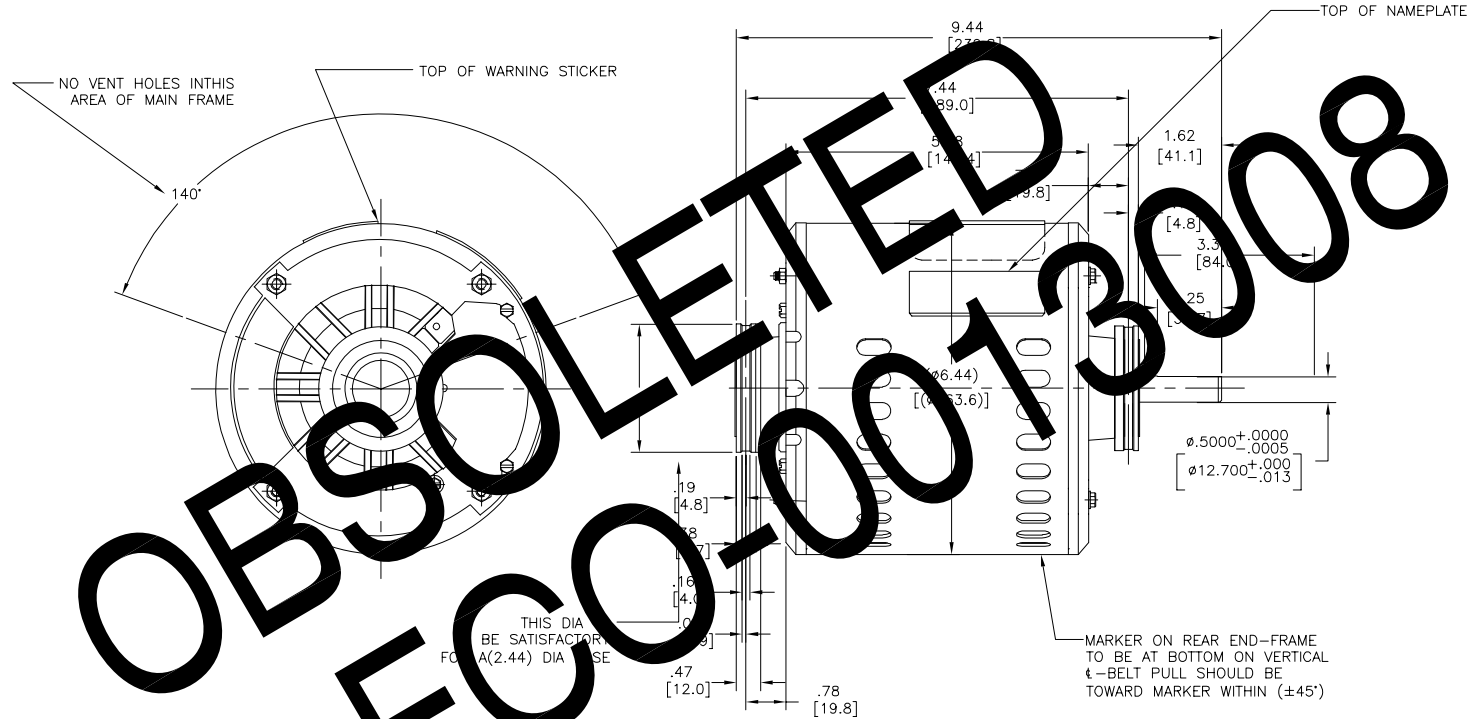
Output HP	3/4 Hp	Output KW	0.56 kW
Frequency	60 Hz	Voltage	230 V
Current	5.6/2.8 A	Speed	1725/1140 rpm
Service Factor	1	Phase	1
Duty	Continuous	Insulation Class	B
Frame	56Z	Enclosure	Open Drip Proof
Thermal Protection	Automatic	Ambient Temperature	40 °C
UL	Recognized	CSA	Y
CE	N		

Technical Specifications

Electrical Type	Split Phase	Starting Method	Across The Line
Poles	4/6	Rotation	Counterclockwise Lead End
Mounting	Resilient Base	Drive End Bearing	Ball
Opp Drive End Bearing	Ball	Frame Material	Rolled Steel
Shaft Type	Flat	Overall Length	9.44 in
Frame Length	5.20 in	Shaft Diameter	0.500 in
Shaft Extension	1.5 in		

This is an uncontrolled document once printed or downloaded and is subject to change without notice. Date Created:30/10/2019

REV	ECO	REV BY	DATE	APPD	DATE
B	0013008	PEDRO AVILEZ	03-11-2010	J. ORTEGA	03-11-2010



- NOTES:
1. SCREWS FOR CONDUIT BOX COVER AND GROUND SCREW TO BE INSERTED .16[4.1] TO .22[5.6] BETWEEN END FRAME AND SCREW HEADS.
 2. CONDUIT BOX COVER TO BE SHIPPED SEPARATELY.
 3. SPLIT IN STEEL RING TO FALL IN RANDOM LOCATION (BOTH ENDS).
 4. TERMINALS FOR CONNECTION ARE (.250[6.35]X.032[.81]) SPADE TYPE TERMINALS.

GEOMETRIC CHARACTERISTICS & SYMBOLS ▭ FLATNESS — STRAIGHTNESS ∠ ANGULARITY ⊥ PERPENDICULARITY (SQUARENESS) ∥ PARALLELISM ○ ROUNDNESS (CIRCULARITY) ⌀ CYLINDRICITY ~ PROFILE OF ANY SURFACE ~ PROFILE OF ANY LINE ♣ RUNOUT ⬇ TRUE POSITION ⊙ CONCENTRICITY = SYMMETRY	UNLESS OTHERWISE SPECIFIED DIM. TOLERANCES ARE AS FOLLOWS: INCH X XX XXX XXXX ±.1 ±.02 ±.005 ±.0005 mm ±0.5 ±0.13 ±0.013 ANG. ±.50 DEG REMOVE BURRS & BREAK SHARP EDGES: INCH .003-.015 mm 0.1-.04 CORNER FILLETS TO: INCH .020 mm 0.5 MACHINE SURFACES: INCH 125 mm 3.2 METRIC DIMS. SHOWN IN [BRACKETS]	DR BY: BAOCHENG SHEN	06-17-2008	AC Smith Innovation has a name. ELECTRICAL PRODUCTS COMPANY A DIVISION OF A. O. SMITH CORPORATION
		APPD:	EDS DATE 02-22-2008 FORMAT REV F	
THIRD ANGLE PROJECTION		CONFIDENTIAL: THIS DRAWING AND ITS INFORMATION ARE THE EXCLUSIVE AND CONFIDENTIAL PROPERTY OF A.O. SMITH CORP. AND ARE NOT TO BE DISCLOSED, DUPLICATED, DISTRIBUTED OR OTHERWISE USED WITHOUT THE WRITTEN CONSENT OF A.O. SMITH CORP. -ALL RIGHTS RESERVED. ASME Y14.5M 1994		SIZE C DWG NO SVB2074H
		SCALE NONE		SHEET 1

OBSOLETE PER ECO-0013008

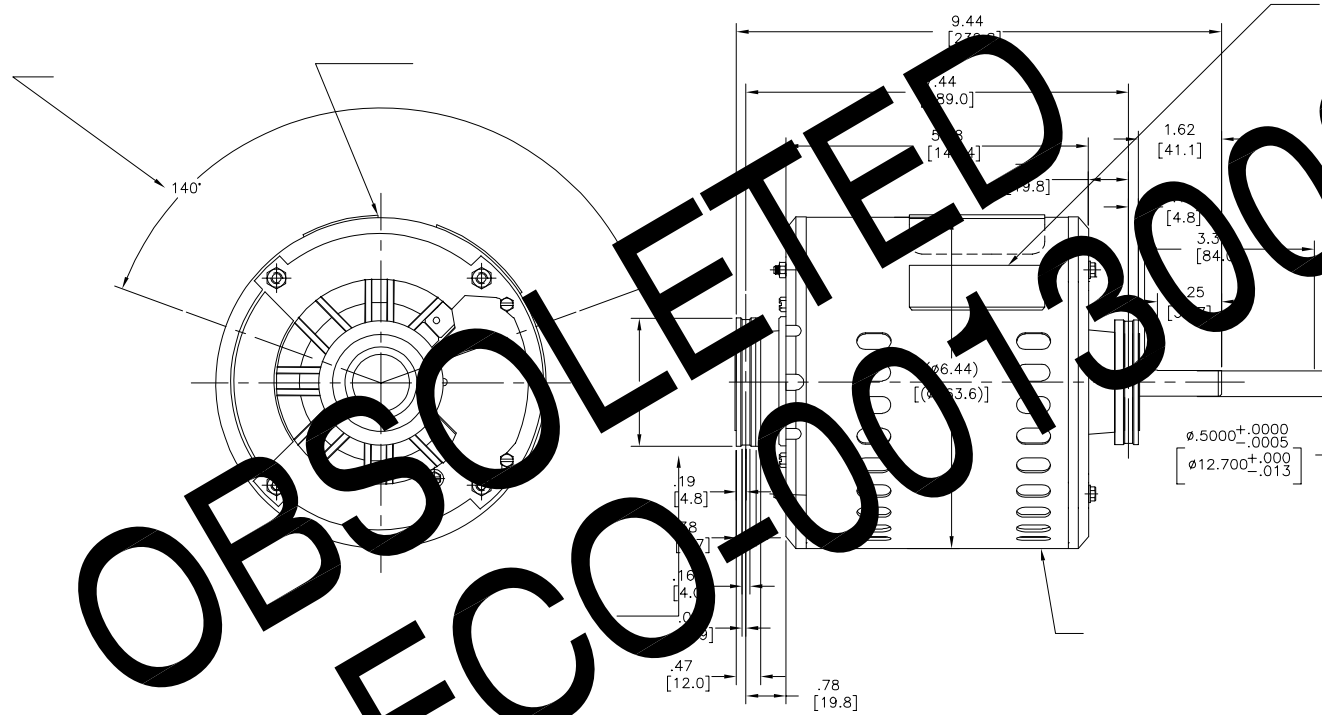
4

3

2

1

REVISION:	ECO	REVISADO POR:	FECHA:	APROBADO POR:	FECHA:
B	0013008	PEDRO AVILEZ	03-11-2010	J. ORTEGA	03-11-2010



OBSOLETE PER ECO-0013008

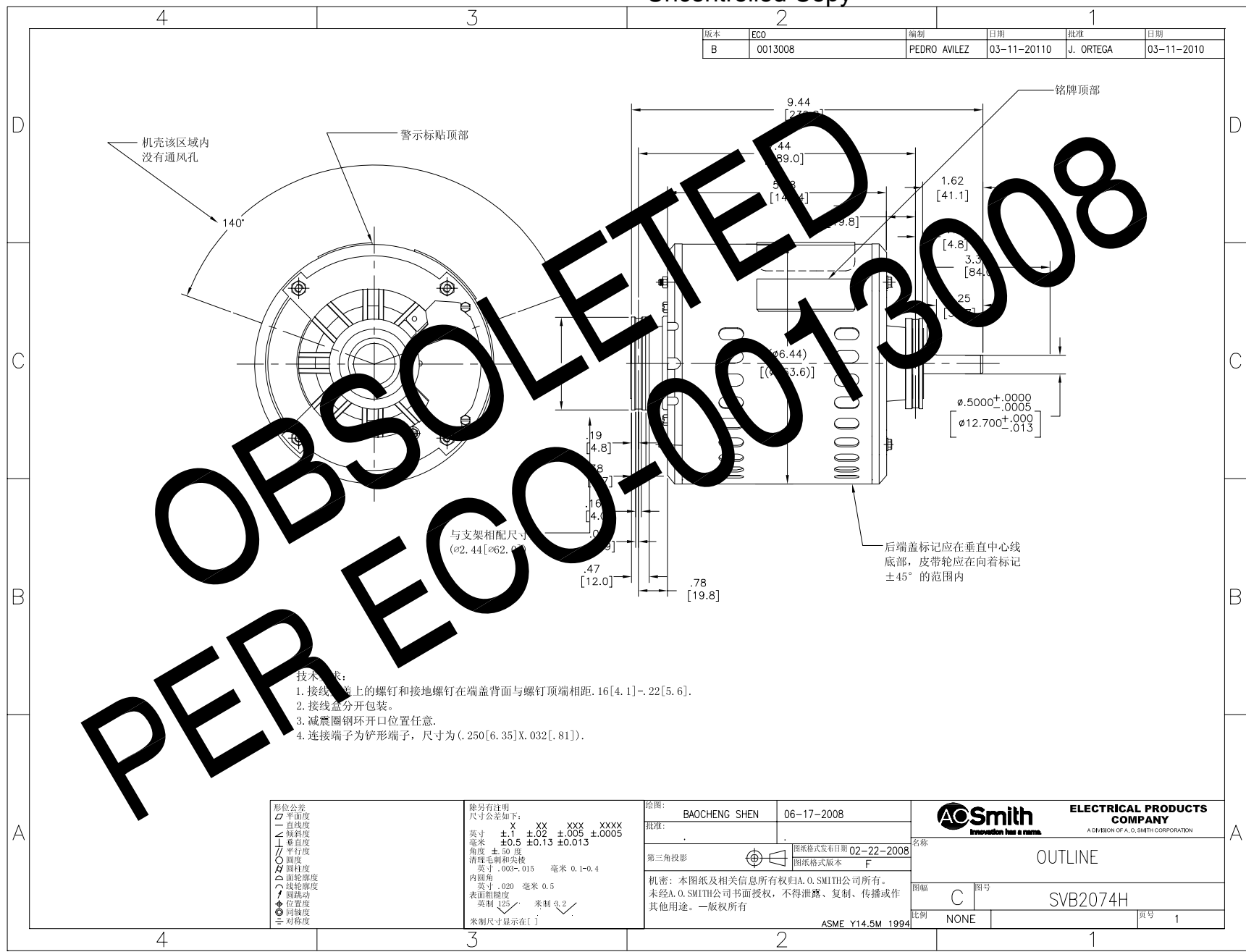
CARACTERISTICAS DE GEOMETRIA Y SIMBOLOS: ▽ PLANICIDAD — RECTITUD ∠ ANGULARIDAD ⊥ PERPENDICULARIDAD (A ESQUADRA) // PARALELISMO ○ REDONDEZ (CIRCULARIDAD) ⌀ CILINDRICIDAD ⊖ PERFIL DE CUALQUIER SUPERFICIE ~ PERFIL DE CUALQUIER LINEA ↗ VARIACION ⊕ POSICION REAL ⊙ CONCENTRICIDAD = SIMETRIA	A MENOS QUE SE ESPECIFIQUE DE OTRA MANERA, LAS TOLERANCIAS DE LAS DIMS. SON LAS SIGUIENTES: PULG ±.1 ±.02 ±.005 ±.0005 mm ±0.5 ±0.13 ±0.013 ANG. ±50 GRADOS ELIMINAR REBABAS Y ORILLAS FILOSAS DEL BORDE. PULG .003-.015 mm 0.1-0.4 FILETEAR ESQUINA: PULG .020 mm 0.5 MAQUINAR SUPERFICIES PULG .125 mm .32 DIMS METRICAS MOSTRADAS [PARENTESIS]	DIBUJADO POR: BAOCHENG SHEN 06-17-2008	AOSmith <small>Innovation has a name.</small> ELECTRICAL PRODUCTS COMPANY <small>A DIVISION OF A. O. SMITH CORPORATION</small>
		APROBADO POR: TERCER ANGULO DE PROYECCION	
		CONFIDENCIAL: ESTE DIBUJO Y SU INFORMACION SON PROPIEDAD DE USO EXCLUSIVO Y CONFIDENCIAL DE A.O.SMITH CORP. Y NO DEBERAN SER REVELADOS, DUPLICADOS, DISTRIBUIDOS O USARSE DE OTRA MANERA SIN EL CONSENTIMIENTO ESCRITO DE A.O. SMITH CORP. -TODOS LOS DERECHOS RESERVADOS.ASME Y14.5M 1994	TAMANO: C NUMERO DE DIBUJO: SVB2074H
		ESCALA: NONE	HOJA: 1

4

3

2

1



版本	ECO	编制	日期	批准	日期
B	0013008	PEDRO AVILEZ	03-11-2010	J. ORTEGA	03-11-2010

- 技术要求:
1. 接线盒上的螺钉和接地螺钉在端盖背面与螺钉顶端相距.16[4.1]-.22[5.6].
 2. 接线盒分开包装.
 3. 减震圈钢环开口位置任意.
 4. 连接端子为铲形端子, 尺寸为(.250[6.35]X.032[.81]).

形位公差	除另有注明
□ 平面度	尺寸公差如下:
— 直线度	英寸 X XX XXX XXXX
∠ 倾斜度	英寸 ±.1 ±.02 ±.005 ±.0005
⊥ 垂直度	毫米 ±0.5 ±0.13 ±0.013
∥ 平行度	角度 ±.50 度
○ 圆度	清理毛刺和尖棱
⊙ 圆跳动	英寸 .003-.015 毫米 0.1-0.4
⊙ 面轮廓度	内圆角
⊙ 线轮廓度	英寸 .020 毫米 0.5
⊙ 圆跳动	表面粗糙度
⊙ 同轴度	英制 125 米制 3.2
⊙ 对称度	米制尺寸显示在 []

绘图:	BAOCHENG SHEN	06-17-2008
批准:		
第三角投影	图纸格式发布日期 02-22-2008	图纸格式版本 F
机密: 本图纸及相关信息所有权归A. O. SMITH公司所有。未经A. O. SMITH公司书面授权, 不得泄露、复制、传播或作其他用途。—版权所有		
ASME Y14.5M 1994		

名称	ELECTRICAL PRODUCTS COMPANY A DIVISION OF A. O. SMITH CORPORATION	
名称	OUTLINE	
图幅	C	图号 SVB2074H
比例	NONE	页号 1

ASME Y14.5M 1994	比例 NONE	图号 SVB2074H	页号 1
------------------	---------	-------------	------