

PRODUCT INFORMATION PACKET



Model No: SGK2054V1
Catalog No: SGK2054V1

1/2-1/4 HP Fan and Blower HVAC/R Motor, 1 phase, 1800 RPM, 115 V, 56 Frame, OPEN
Belt Drive Motors



Regal and Century are trademarks of Regal Beloit Corporation or one of its affiliated companies.
©2019 Regal Beloit Corporation, All Rights Reserved. MC017097E

REGAL



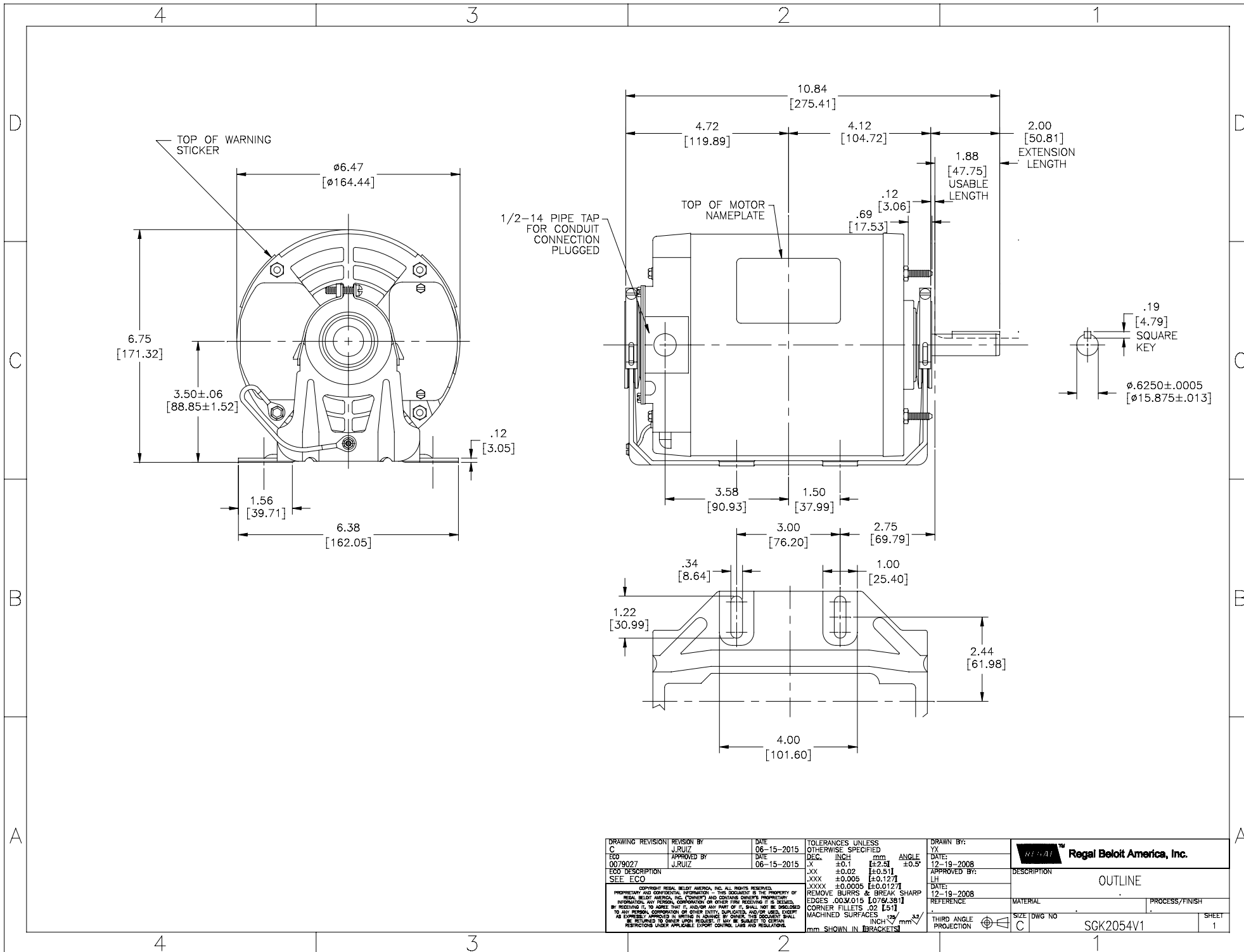
Nameplate Specifications

Output HP	1/2-1/4 Hp	Output KW	0.37 kW
Frequency	60 Hz	Voltage	115 V
Current	8.6-6.0 A	Speed	1725-1140 rpm
Service Factor	1.15	Phase	1
Duty	Continuous	Insulation Class	B
Frame	56	Enclosure	Open Enclosed
Thermal Protection	Automatic	Ambient Temperature	40 °C
UL	No	CSA	Y
CE	N		

Technical Specifications

Electrical Type	Split Phase	Starting Method	Across The Line
Poles	4/6	Rotation	Counterclockwise
Mounting	Resilient Base	Drive End Bearing	Sleeve
Opp Drive End Bearing	Sleeve	Frame Material	Rolled Steel
Shaft Type	Keyed	Overall Length	10.84 in
Frame Length	5.69 in	Shaft Diameter	0.625 in
Shaft Extension	1.88 in		

This is an uncontrolled document once printed or downloaded and is subject to change without notice. Date Created:30/10/2019



DRAWING REVISION: C	REVISION BY: J.RUIZ	DATE: 06-15-2015	TOLERANCES UNLESS OTHERWISE SPECIFIED:	DRAWN BY: YX	
ECO: 0079027	APPROVED BY: J.RUIZ	DATE: 06-15-2015	DEC. INCH: ± 0.1 [2.54]	DATE: 12-19-2008	
ECO DESCRIPTION: SEE ECO			X .XX ± 0.02 [0.51]	APPROVED BY: LH	DESCRIPTION: OUTLINE
<small> COPYRIGHT REGAL BELOIT AMERICA, INC. ALL RIGHTS RESERVED. PROPRIETARY AND CONFIDENTIAL INFORMATION - THIS DOCUMENT IS THE PROPERTY OF REGAL BELOIT AMERICA, INC. (OWNER) AND CONTAINS OWNER'S PROPRIETARY INFORMATION. ANY REPRODUCTION, COPIATION OR OTHER USE WITHOUT THE WRITTEN PERMISSION OF REGAL BELOIT AMERICA, INC. IS STRICTLY PROHIBITED. BY RECEIVING IT, YOU AGREE THAT IT, AND/OR ANY PART OF IT, SHALL NOT BE DISCLOSED TO ANY PERSON, CORPORATION OR OTHER ENTITY, SUPPLIER, AND/OR USER, EXCEPT AS EXPRESSLY APPROVED IN WRITING BY OWNER. THIS DOCUMENT SHALL BE RETURNED TO OWNER UPON REQUEST. IT MAY BE SUBJECT TO CERTAIN RESTRICTIONS UNDER APPLICABLE EXPORT CONTROL LAWS AND REGULATIONS. </small>			.XXX ± 0.005 [0.127] .XXXX ± 0.0005 [0.0127] REMOVE BURRS & BREAK SHARP EDGES .003/.015 [0.076/.381] CORNER FILLETS .02 [.51] MACHINED SURFACES	DATE: 12-19-2008	MATERIAL:
			MACHINED SURFACES: INCH mm mm SHOWN IN BRACKETS	REFERENCE:	PROCESS/FINISH:
			THIRD ANGLE PROJECTION	SIZE: C	DWG NO: SGK2054V1 SHEET: 1