

PRODUCT INFORMATION PACKET



Model No: SGK2034V1
Catalog No: SGK2034V1

1/3,1/10 HP 2 speed Fan and Blower HVAC/R Motor, 1 phase, 1800/1200 RPM, 115 V, 56 Frame, OPEN Belt Drive Motors



Regal and Century are trademarks of Regal Beloit Corporation or one of its affiliated companies.
©2019 Regal Beloit Corporation, All Rights Reserved. MC017097E

REGAL



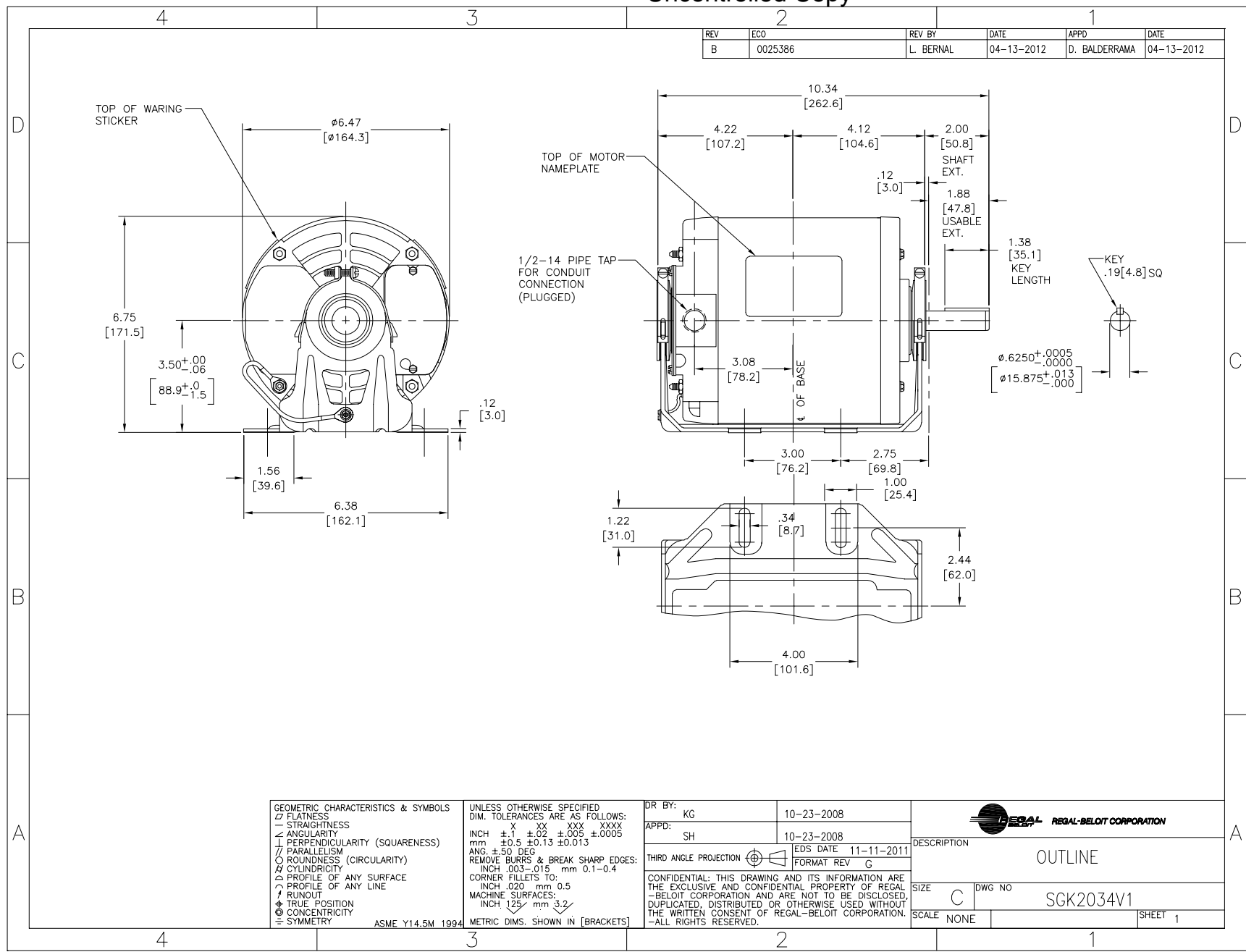
Nameplate Specifications

Output HP	1/3,1/10 Hp	Output KW	0.25 kW
Frequency	60 Hz	Voltage	115 V
Current	6.6/3.3 A	Speed	1725/1140 rpm
Service Factor	1.35	Phase	1
Duty	Continuous	Insulation Class	B
Frame	56	Enclosure	Open Enclosed
Thermal Protection	Automatic	Ambient Temperature	40 °C
UL	No	CSA	Y
CE	N		

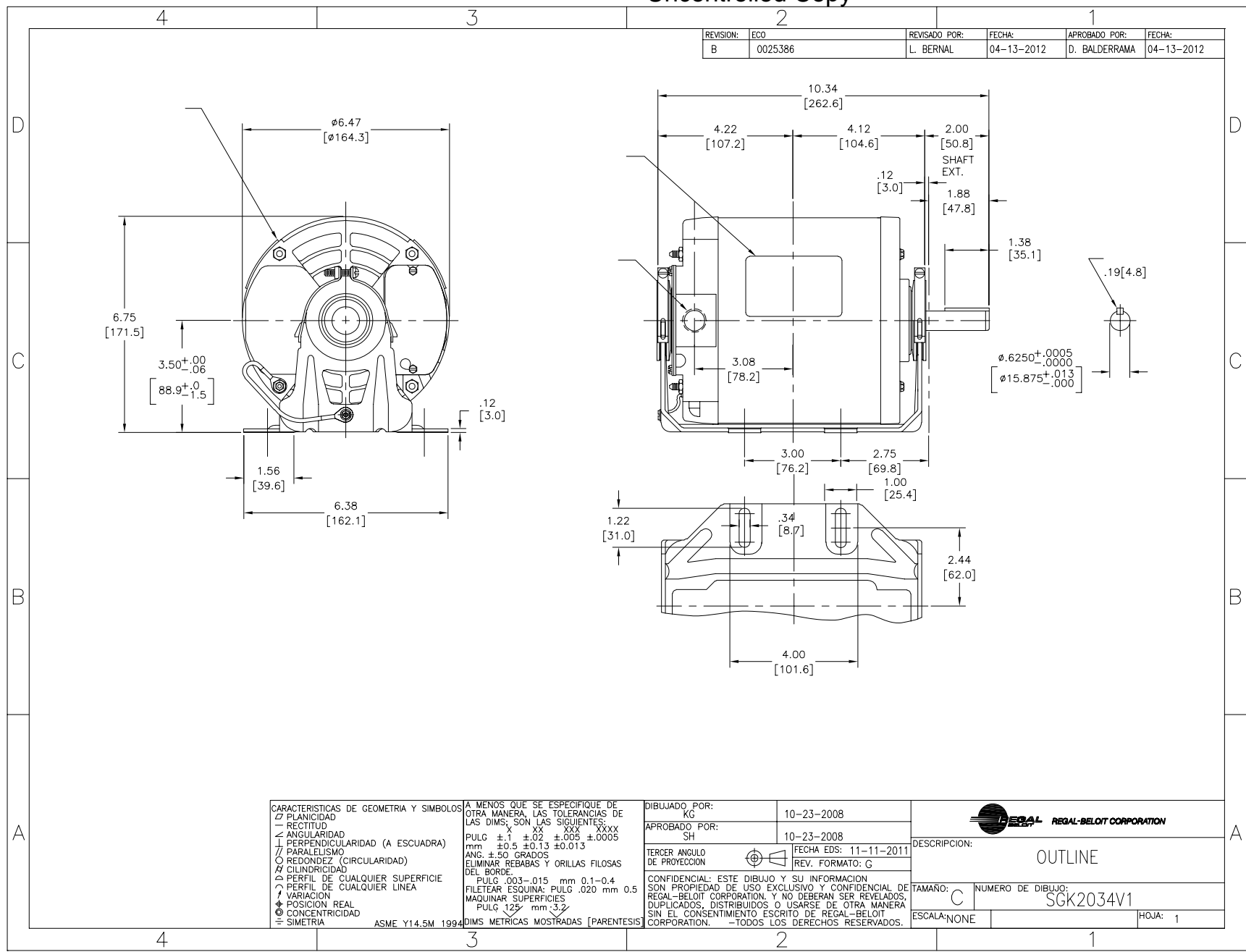
Technical Specifications

Electrical Type	Split Phase	Starting Method	Across The Line
Poles	4/6	Rotation	Counterclockwise
Mounting	Resilient Base	Drive End Bearing	Sleeve
Opp Drive End Bearing	Sleeve	Frame Material	Rolled Steel
Shaft Type	Keyed	Overall Length	10.34 in
Frame Length	5.19 in	Shaft Diameter	0.625 in
Shaft Extension	1.88 in		

This is an uncontrolled document once printed or downloaded and is subject to change without notice. Date Created:30/10/2019



GEOMETRIC CHARACTERISTICS & SYMBOLS ▭ FLATNESS — STRAIGHTNESS ∠ ANGULARITY ⊥ PERPENDICULARITY (SQUARENESS) ∥ PARALLELISM ○ ROUNDNESS (CIRCULARITY) ⌀ CYLINDRICITY ~ PROFILE OF ANY SURFACE ~ PROFILE OF ANY LINE † RUNOUT ⬇ TRUE POSITION ⊙ CONCENTRICITY = SYMMETRY ASME Y14.5M 1994	UNLESS OTHERWISE SPECIFIED DIM. TOLERANCES ARE AS FOLLOWS: INCH X XX XXX XXXX mm ±.1 ±.02 ±.005 ±.0005 ANG. ±.50 DEG REMOVE BURRS & BREAK SHARP EDGES: INCH .003-.015 mm 0.1-.04 CORNER FILLETS TO: INCH .020 mm 0.5 MACHINE SURFACES: INCH 125 mm 3.2 METRIC DIMS. SHOWN IN [BRACKETS]	DR BY: KG 10-23-2008	REGAL BELOIT CORPORATION REGAL BELOIT CORPORATION
		APPD: SH 10-23-2008	
THIRD ANGLE PROJECTION		EDS DATE 11-11-2011 FORMAT REV C	CONFIDENTIAL: THIS DRAWING AND ITS INFORMATION ARE THE EXCLUSIVE AND CONFIDENTIAL PROPERTY OF REGAL BELOIT CORPORATION AND ARE NOT TO BE DISCLOSED, DUPLICATED, DISTRIBUTED OR OTHERWISE USED WITHOUT THE WRITTEN CONSENT OF REGAL BELOIT CORPORATION. ALL RIGHTS RESERVED.
		SIZE C DWG NO SGK2034V1	SCALE NONE SHEET 1



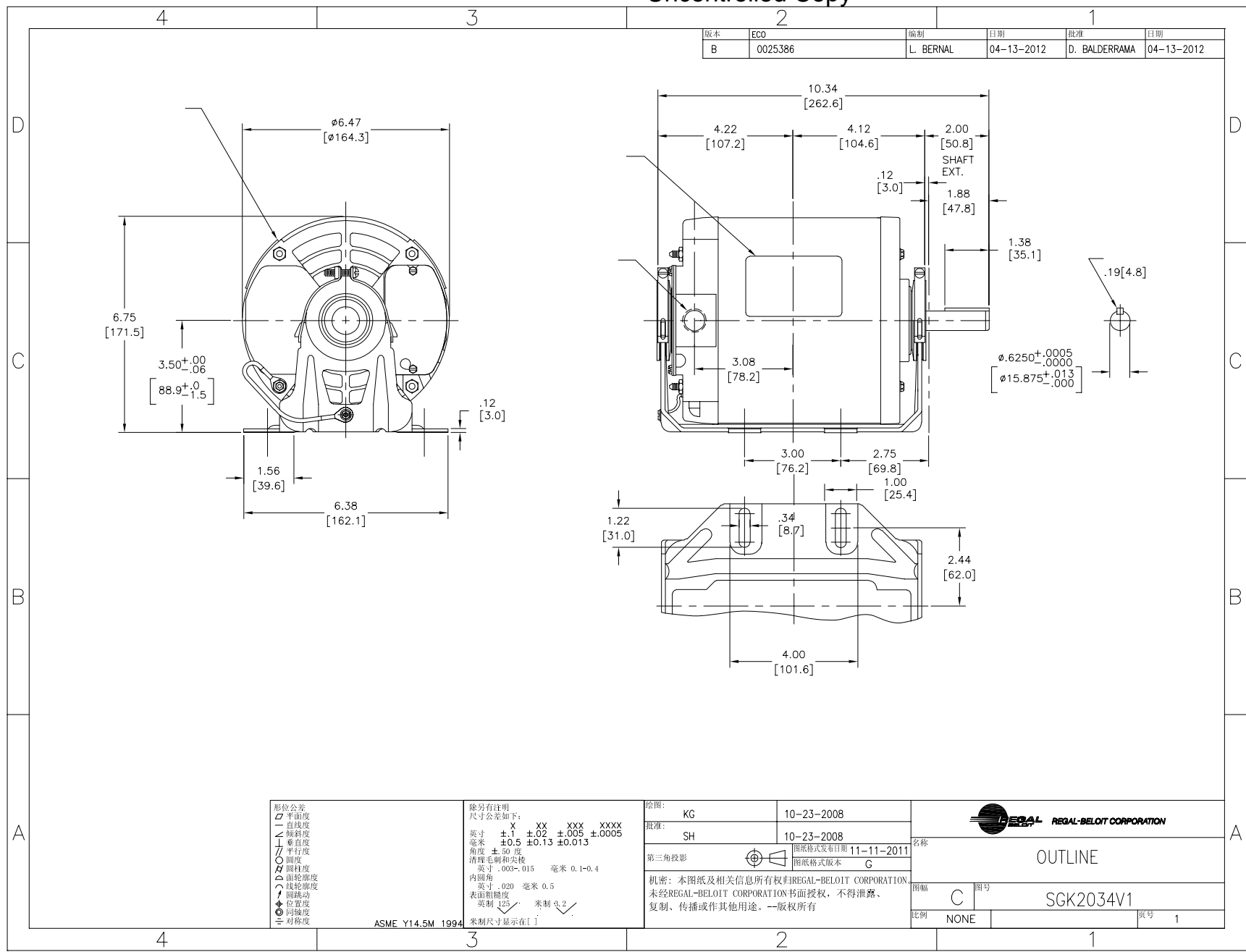
REVISION: B	ECO 0025386	REVISADO POR: L. BERNAL	FECHA: 04-13-2012	APROBADO POR: D. BALDERRAMA	FECHA: 04-13-2012
-------------	----------------	-------------------------	-------------------	-----------------------------	-------------------

CARACTERISTICAS DE GEOMETRIA Y SIMBOLOS
 ▽ PLANICIDAD
 — RECTITUD
 ∠ ANGULARIDAD
 ⊥ PERPENDICULARIDAD (A ESQUADRA)
 // PARALELISMO
 ○ REDONDEZ (CIRCULARIDAD)
 ⌀ CILINDRICIDAD
 ▭ PERFIL DE CUALQUIER SUPERFICIE
 ~ PERFIL DE CUALQUIER LINEA
 † VARIACION
 ⊕ POSICION REAL
 ⊙ CONCENTRICIDAD
 ≡ SIMETRIA
 ASME Y14.5M 1994

A MENOS QUE SE ESPECIFIQUE DE OTRA MANERA, LAS TOLERANCIAS DE LAS DIMS. SON LAS SIGUIENTES:
 PULG ±.1 ±.02 ±.005 ±.0005
 mm ±0.5 ±0.13 ±0.013
 ANG. ±.50 GRADOS
 ELIMINAR REBABAS Y ORILLAS FILOSAS DEL BORDE.
 PULG .003-.015 mm 0.1-0.4
 FILETEAR ESQUINA: PULG .020 mm 0.5
 MAQUINAR SUPERFICIES
 PULG .125 mm .3.2
 DIMS METRICAS MOSTRADAS [PARENTESIS]

DIBUJADO POR: KG	10-23-2008
APROBADO POR: SH	10-23-2008
TERCER ANGULO DE PROYECCION	FECHA EDS: 11-11-2011 REV. FORMATO: C
CONFIDENCIAL: ESTE DIBUJO Y SU INFORMACION SON PROPIEDAD DE USO EXCLUSIVO Y CONFIDENCIAL DE REGAL-BELOIT CORPORATION. Y NO DEBERAN SER REVELADOS, DUPLICADOS, DISTRIBUIDOS O USARSE DE OTRA MANERA SIN EL CONSENTIMIENTO ESCRITO DE REGAL-BELOIT CORPORATION. -TODOS LOS DERECHOS RESERVADOS.	

DESCRIPCION:	OUTLINE
TAMAÑO: C	NUMERO DE DIBUJO: SGK2034V1
ESCALA: NONE	HOJA: 1



形位公差 □ 平面度 — 直线度 ∠ 倾斜度 ⊥ 垂直度 // 平行度 ○ 圆度 ⊙ 圆柱度 Ⓜ 面轮廓度 Ⓢ 线轮廓度 Ⓡ 圆跳动 Ⓢ 位置度 Ⓢ 同轴度 Ⓢ 对称度	除另有注明 尺寸公差如下: 英寸 X XX XXX XXXX 毫米 $\pm 0.1 \pm 0.02 \pm 0.005 \pm 0.0005$ $\pm 0.5 \pm 0.13 \pm 0.013$ 角度 ± 0.5 度 清理毛刺和尖棱 英寸 .003-.015 毫米 0.1-0.4 内圆角 英寸 .020 毫米 0.5 表面粗糙度 英寸 125 微米 3.2 米制 3.2	绘图: KG 10-23-2008 批准: SH 10-23-2008	名称 OUTLINE 图号 SGK2034V1 比例 NONE 页号 1
		第三角投影 图档格式发布日期 11-11-2011 图档格式版本 C 机密: 本图纸及相关信息所有权归REGAL-BELOIT CORPORATION 未经REGAL-BELOIT CORPORATION书面授权, 不得泄露、 复制、传播或作其他用途。--版权所有	