

PRODUCT INFORMATION PACKET



Model No: K100V2

Catalog No: K100V2

1 HP General Purpose Farm Duty Motor, 1 phase, 1800 RPM, 115/208-230 V, 143T Frame, TEFC
Single Phase Farm Duty Motors



Regal and Century are trademarks of Regal Beloit Corporation or one of its affiliated companies.

©2019 Regal Beloit Corporation, All Rights Reserved. MC017097E

REGAL



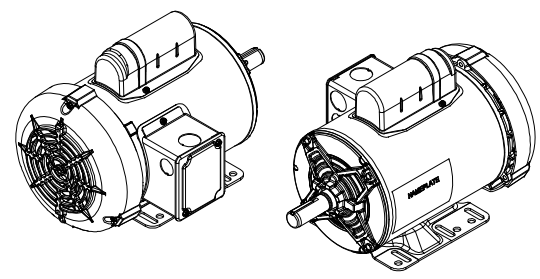
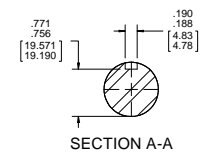
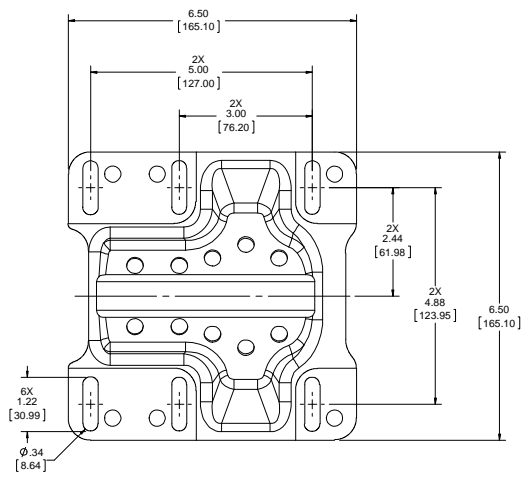
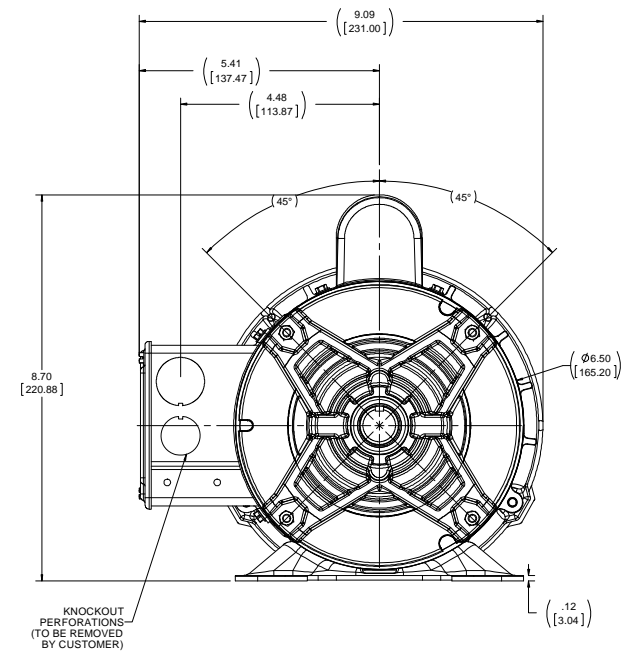
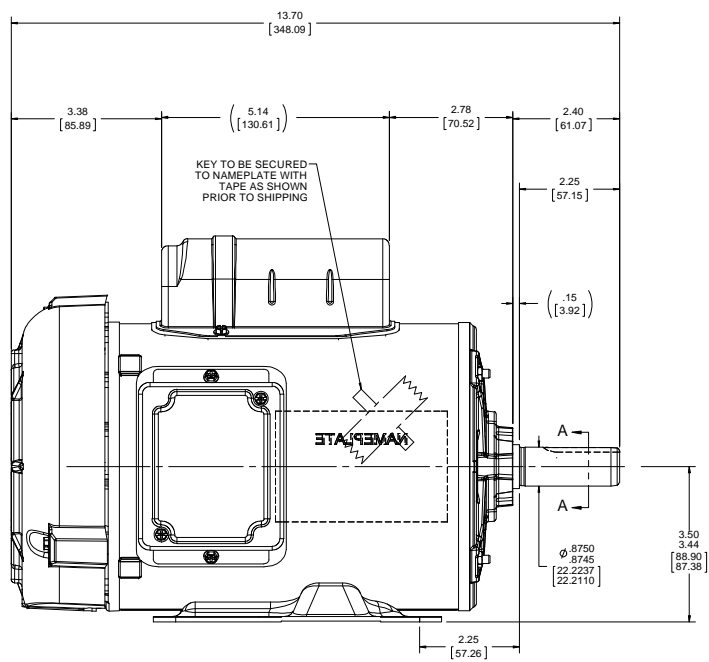
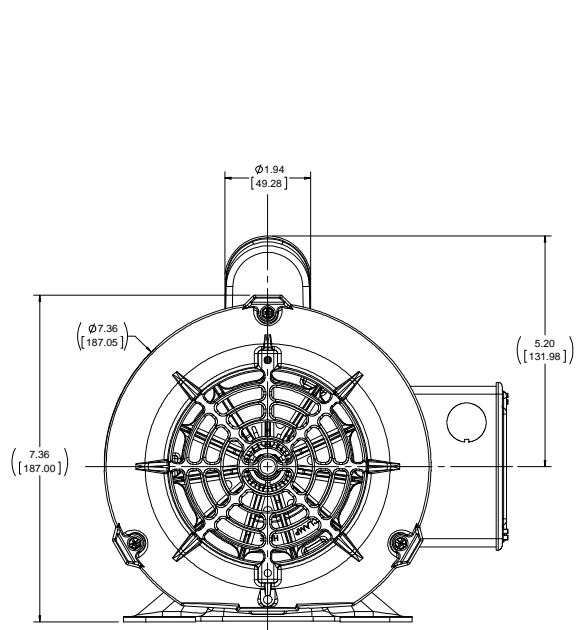
Nameplate Specifications

Output HP	1 Hp	Output KW	0.75 kW
Frequency	60 Hz	Voltage	115/208-230 V
Current	14/6.8-7.0 A	Speed	1725 rpm
Service Factor	1.15	Phase	1
Duty	Continuous	Insulation Class	B
Frame	143T	Enclosure	Totally Enclosed Fan Cooled
Thermal Protection	None	Ambient Temperature	40 °C
UL	Recognized	CSA	Y
CE	Y		

Technical Specifications

Electrical Type	Capacitor Start Induction Run	Starting Method	Across The Line
Poles	4	Rotation	Selective Counterclockwise
Mounting	Rigid Base	Drive End Bearing	Ball
Opp Drive End Bearing	Ball	Frame Material	Rolled Steel
Shaft Type	T	Overall Length	13.70 in
Frame Length	7.65 in	Shaft Diameter	0.875 in
Shaft Extension	2.25 in		

This is an uncontrolled document once printed or downloaded and is subject to change without notice. Date Created:30/10/2019



DRAWING REVISION		REVISION BY	DATE	TOLERANCES UNLESS OTHERWISE SPECIFIED:		DRAWN BY	DS	Regal Beloit America, Inc.	
ECO-0143379	A	APPROVED BY	DATE	ASD	INCH	DATE	06/25/2018	DESCRIPTION	56 FR, TEFC, INSD
NEW DRAWING RELEASE				XXX	.05	ANGLE	17.50°	OUTLINE	
REGAL BELLOIT AMERICA, INC. COMPANY AND DESIGN COMPANY PROPRIETORS. ALL RIGHTS RESERVED. THIS DRAWING IS THE PROPERTY OF REGAL BELLOIT AMERICA, INC. COMPANY AND DESIGN COMPANY PROPRIETORS. ANY REPRODUCTION OR USE OF THIS DRAWING WITHOUT THE WRITTEN PERMISSION OF REGAL BELLOIT AMERICA, INC. COMPANY AND DESIGN COMPANY IS STRICTLY PROHIBITED. THIS DRAWING IS UNCLASSIFIED AND IS NOT TO BE RELEASED TO THE PUBLIC. ANY REPRODUCTION OR USE OF THIS DRAWING WITHOUT THE WRITTEN PERMISSION OF REGAL BELLOIT AMERICA, INC. COMPANY AND DESIGN COMPANY IS STRICTLY PROHIBITED.				XXX	.0005	R&S	027	MATERIAL	
MACHINED SURFACES: .0005				XXXX	.0005	EDGE	0.02 (15) (276.38) X 45°	PROCESS FINISH	
CORNER FILLETS: R.01 (51)				XXXX	.0005	CORNER	R.01 (51)	MATERIAL	
FINISH SHOWN IN BRACKETS				XXXX	.0005	MACHINED SURFACES:	.0005	MATERIAL	
				XXXX	.0005	CORNER FILLETS:	R.01 (51)	MATERIAL	
				XXXX	.0005	FINISH SHOWN IN BRACKETS		MATERIAL	