

PRODUCT INFORMATION PACKET



Model No: H697V1
Catalog No: H697V1

1.5 HP Condenser Fans HVAC/R Motor, 3 phase, 1200 RPM, 200-230/460 V, 56Y Frame, TEAO
Condenser Fans Motors



Regal and Century are trademarks of Regal Beloit Corporation or one of its affiliated companies.
©2019 Regal Beloit Corporation, All Rights Reserved. MC017097E





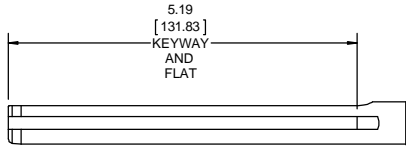
Nameplate Specifications

Output HP	1.5 Hp	Output KW	1.1 kW
Frequency	60 Hz	Voltage	200-230/460 V
Current	5.4-5.6/2.8 A	Speed	1140 rpm
Service Factor	1.15	Phase	3
Duty	Continuous	Insulation Class	B
Frame	56Y	Enclosure	Totally Enclosed Air Over
Thermal Protection	Thermally Protected	Ambient Temperature	70 °C
UL	Recognized	CSA	Y
CE	N		

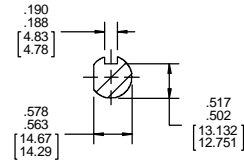
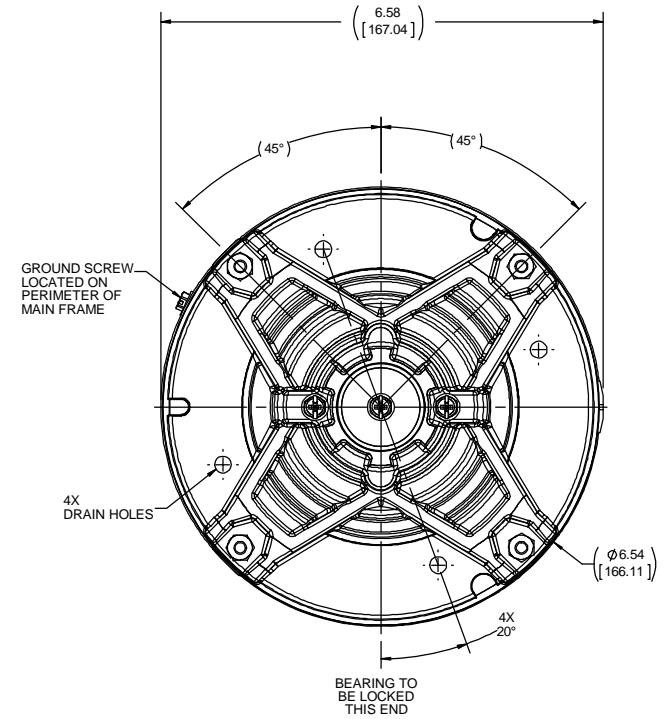
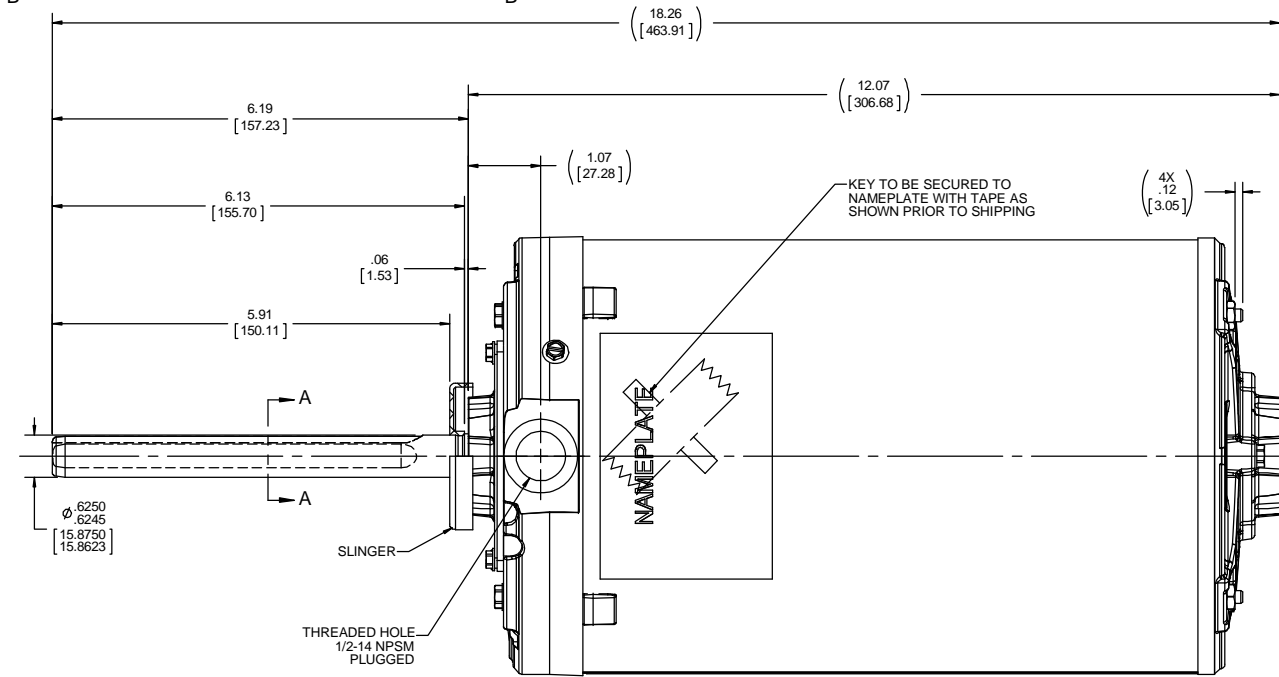
Technical Specifications

Electrical Type	Three Phase	Starting Method	Across The Line
Poles	6	Rotation	Reversible
Mounting	Round	Drive End Bearing	Ball
Opp Drive End Bearing	Ball	Frame Material	Rolled Steel
Shaft Type	Keyed	Overall Length	18.26 in
Frame Length	9.25 in	Shaft Diameter	0.625 in
Shaft Extension	6.19 in		

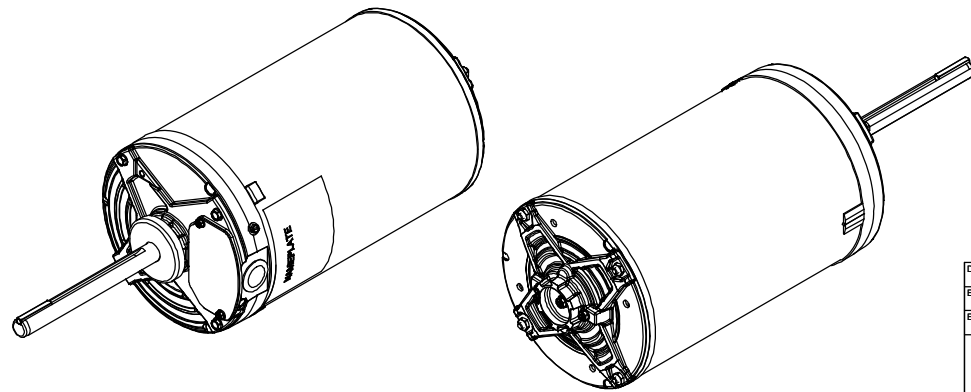
This is an uncontrolled document once printed or downloaded and is subject to change without notice. Date Created:30/10/2019



SECTION B-B



SECTION A-A



DRAWING REVISION A		REVISION BY	DATE	TOLERANCES UNLESS OTHERWISE SPECIFIED:		DRAWN BY E. VILLA	Regal Beloit America, Inc.
ECO-0126161	APPROVED BY	DATE	DEC.	INCH	mm	ANGLE	
ECO DESCRIPTION NMR RELEASE				.X	±0.1	[±2.5]	APPROVED BY M. RAMIREZ
<small>COPYRIGHT REGAL BELOIT AMERICA, INC. ALL RIGHTS RESERVED. PROPRIETARY AND CONFIDENTIAL INFORMATION. THIS DOCUMENT IS THE PROPERTY OF REGAL BELOIT AMERICA, INC. FORMER AND CONTAINING OWNERS PROPRIETARY INFORMATION. ANY PERSON, CORPORATION OR OTHER FIRM RECEIVING IT IS DEEMED BY RECEIVING IT, TO AGREE THAT IT, AND/OR ANY PART OF IT, SHALL NOT BE DISCLOSED TO ANY PERSON, CORPORATION OR OTHER ENTITY, DUPLICATED, AND/OR USED, EXCEPT AS EXPRESSLY APPROVED IN WRITING IN ADVANCE BY OWNER. THIS DOCUMENT SHALL BE RETURNED TO OWNER UPON REQUEST. IT MAY BE SUBJECT TO CERTAIN RESTRICTIONS UNDER APPLICABLE EXPORT CONTROL LAWS AND REGULATIONS.</small>				.XX	±0.03	[±0.76]	DATE 07-04-2017
				.XXX	±0.005	[±0.127]	REFERENCE
				.XXXX	±0.0005	[±0.0127]	THIRD ANGLE PROJECTION
				REMOVE BURRS & BREAK SHARP EDGES: .003/.015 [0.076/.381] X 45° CORNER FILLETS: R.02 [.51]		SIZE	DRAWING NUMBER
				MACHINED SURFACES: 125 / 3.2 INCH / mmv		C	OL56100263-001
				mm SHOWN IN (BRACKETS)		SHEET	1 OF 1

CENTURY

TYPICAL PERFORMANCE CURVE for AC MOTOR

Customer WW Grainger

Curve at

460

Volts

HP 1.5

PHASE 3

Model No H697V1

60

HZ

VOLTS 200-230/460

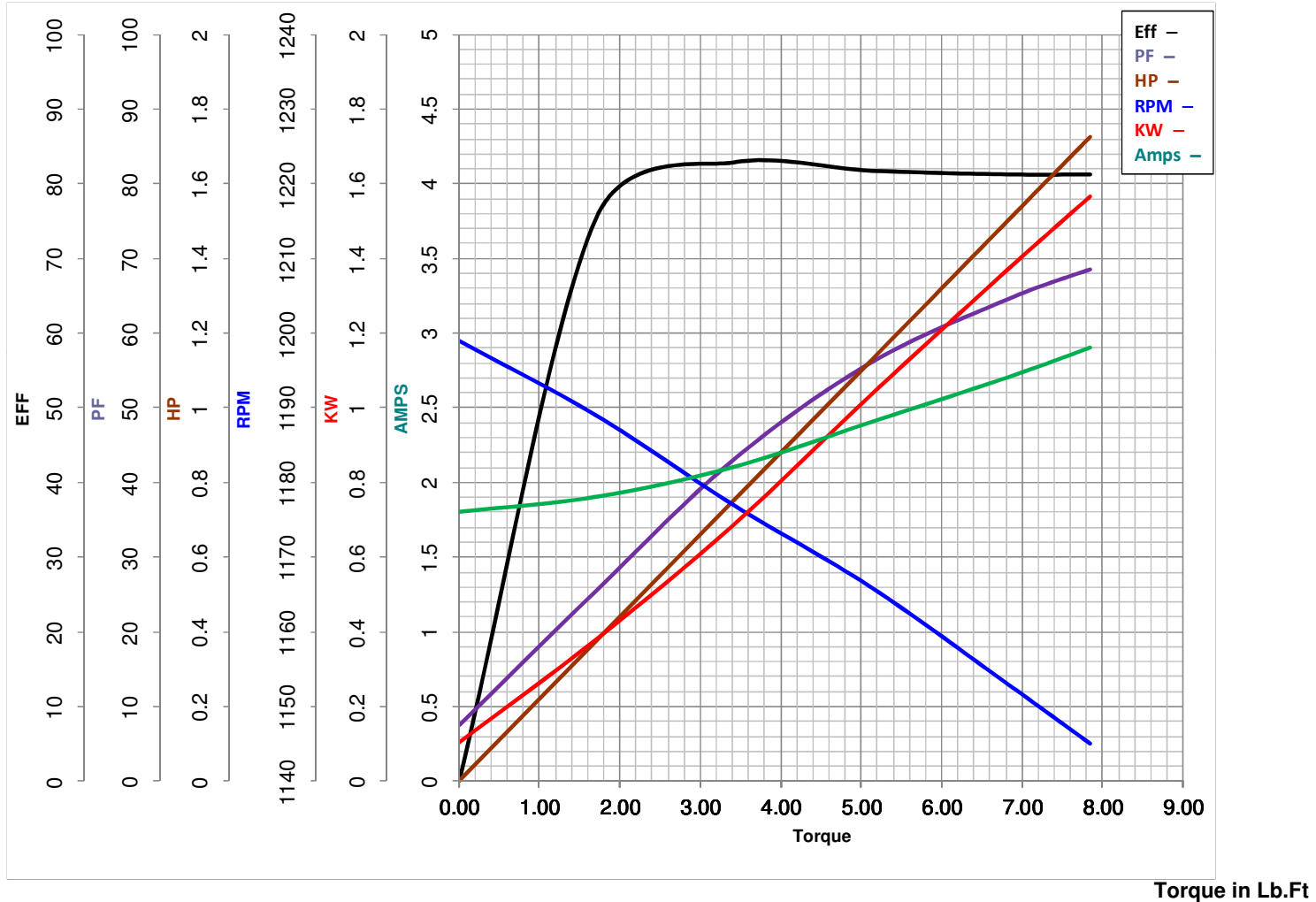
1.5

HP

Catalog No H697V1

HZ 60

RPM 1140



FL TORQUE	<u>6.813</u> Lb.Ft	FL AMPS	<u>5.4-5.6/2.8</u>
BD TORQUE	<u>21.2</u> Lb.Ft	PU TORQUE	<u>16.2</u> Lb.Ft
LR TORQUE	<u>16.19</u> Lb.Ft	LR AMPS	<u>13.43</u>
WINDING	NT56627-3	Prepared By	BHARGAVI
		Date	8/17/2018