

PRODUCT INFORMATION PACKET



Model No: H582V3

Catalog No: H582V3

.75 HP General Purpose Motor, 3 phase, 1800 RPM, 200-230/460 V, 56 Frame, ODP
Three Phase ODP Motors



Regal and Century are trademarks of Regal Beloit Corporation or one of its affiliated companies.

©2019 Regal Beloit Corporation, All Rights Reserved. MC017097E

The REGAL logo is a grey rectangular box with the word 'REGAL' in white, bold, uppercase letters. It is positioned at the bottom of a vertical blue decorative bar that has a halftone dot pattern.



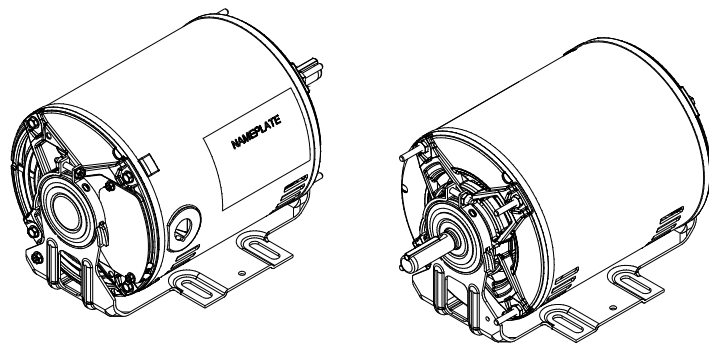
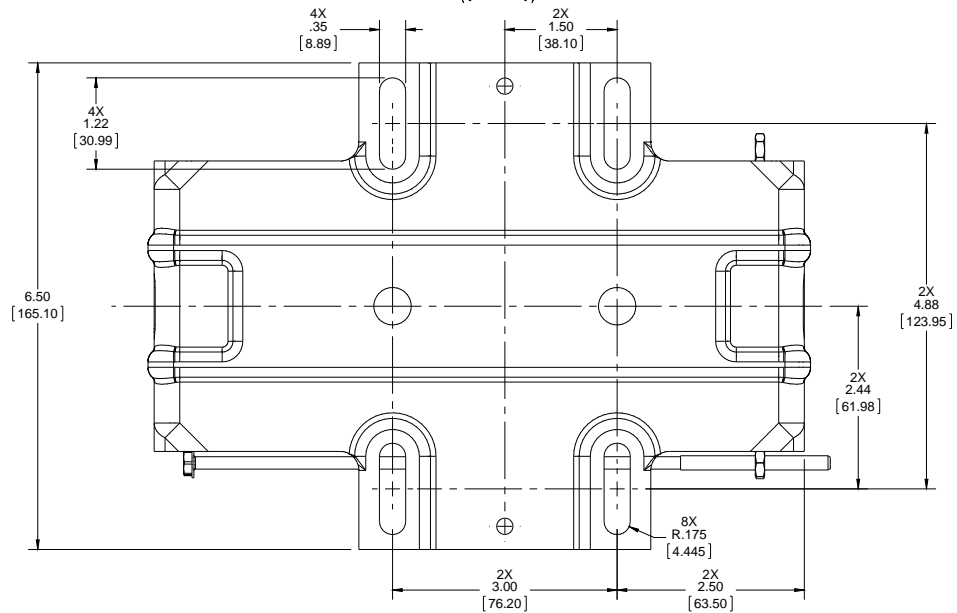
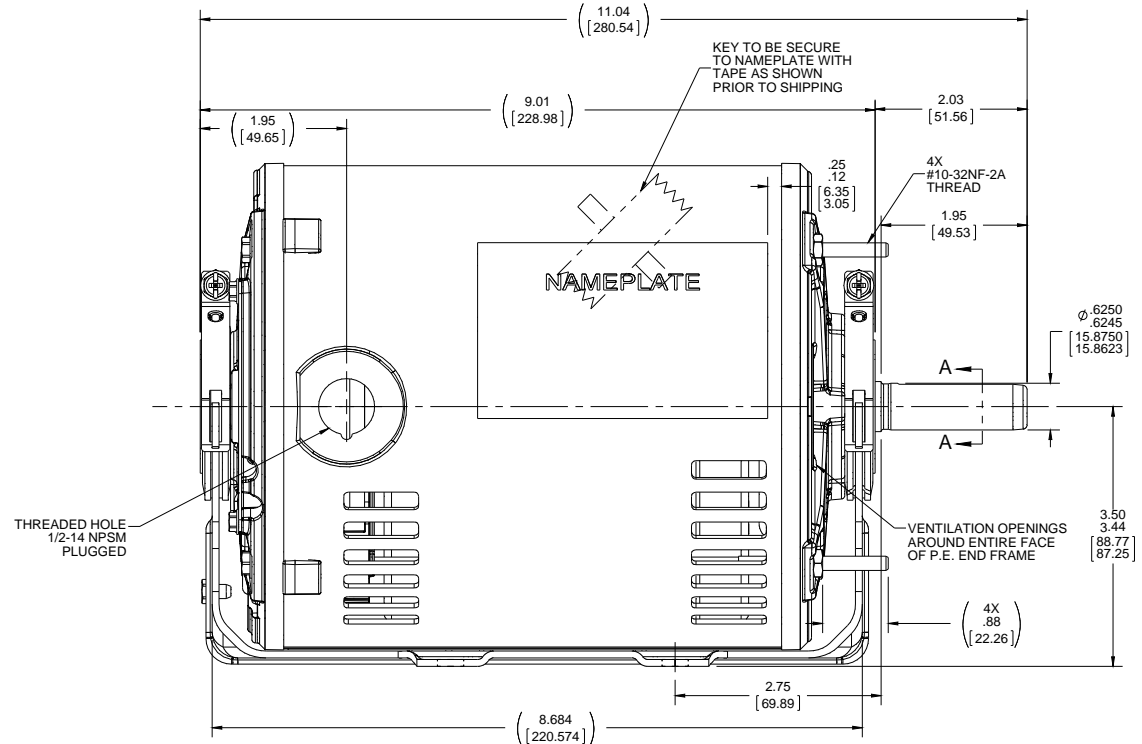
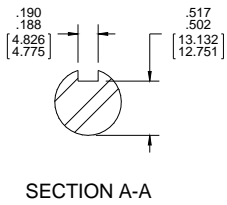
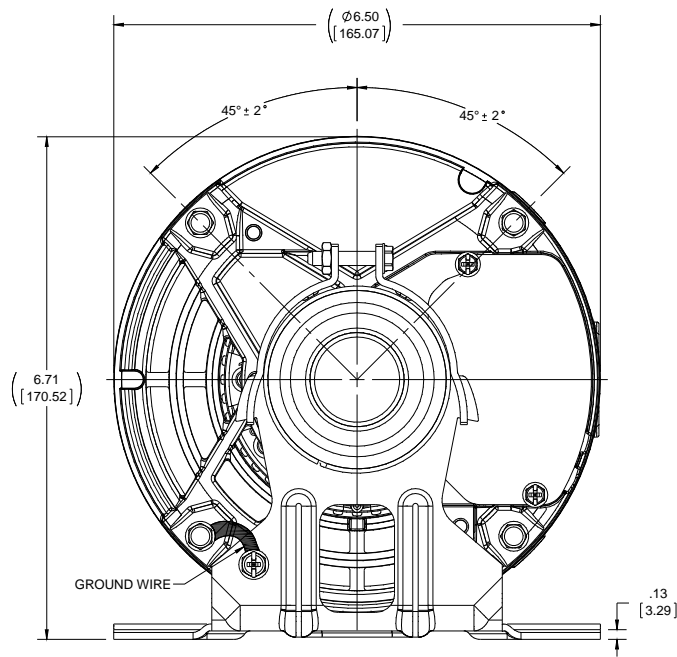
Nameplate Specifications

Output HP	.75 Hp	Output KW	0.56 kW
Frequency	60 Hz	Voltage	200-230/460 V
Current	2.9-3.2/1.6 A	Speed	1725 rpm
Service Factor	1.25	Phase	3
Duty	Continuous	Insulation Class	B
Frame	56	Enclosure	Drip Proof
Thermal Protection	None	Ambient Temperature	40 °C
UL	Recognized	CSA	Y
CE	Y		

Technical Specifications

Electrical Type	Three Phase	Starting Method	Across The Line
Poles	4	Rotation	Reversible
Mounting	Resilient Base	Drive End Bearing	Ball
Opp Drive End Bearing	Ball	Frame Material	Rolled Steel
Shaft Type	NEMA 56	Overall Length	11.04 in
Frame Length	6.65 in	Shaft Diameter	0.625 in
Shaft Extension	2.03 in		

This is an uncontrolled document once printed or downloaded and is subject to change without notice. Date Created:30/10/2019



DRAWING REVISION A	REVISION BY J.RUIZ	DATE 06-03-2016	TOLERANCES UNLESS OTHERWISE SPECIFIED: DEC. INCH mm ANGLE .XX ±0.1 [±2.5] ±0.5° .XX ±0.03 [±0.76] .XXX ±0.005 [±0.127] .XXXX ±0.0005 [±0.0127] REMOVE BURRS & BREAK SHARP EDGES: .0031 [0.0763] X 45° CORNER FILLETS: R.02 [51] MACHINED SURFACES: 1/25 3/2 INCH V mm V mm SHOWN IN [BRACKETS]	DRAWN BY J.RUIZ	Regal Beloit America, Inc.
ECO ECO-0103064	APPROVED BY J.ORTEGA	DATE 06-03-2016	DATE 06-03-2016	APPROVED BY J.ORTEGA	
ECO DESCRIPTION NEW MODEL RELEASE			REFERENCE H582V2	DATE 06-03-2016	DESCRIPTION OUTLINE 56FR, DP, 1-PHASE
<small>COPYRIGHT REGAL BELOIT AMERICA, INC. ALL RIGHTS RESERVED. PROPRIETARY AND CONFIDENTIAL INFORMATION. THIS DOCUMENT IS THE PROPERTY OF REGAL BELOIT AMERICA, INC. (OWNER) AND CONTAINS OWNER'S PROPRIETARY INFORMATION. ANY PERSON, CORPORATION OR OTHER FIRM RECEIVING IT IS DEEMED, BY RECEIVING IT, TO AGREE THAT IT, AND/OR ANY PART OF IT, SHALL NOT BE DISCLOSED TO ANY PERSON, CORPORATION OR OTHER ENTITY, DUPLICATED, AND/OR USED, EXCEPT AS EXPRESSLY APPROVED IN WRITING IN ADVANCE BY OWNER. THIS DOCUMENT SHALL BE RETURNED TO OWNER UPON REQUEST. IT MAY BE SUBJECT TO CERTAIN RESTRICTIONS UNDER APPLICABLE EXPORT CONTROL LAWS AND REGULATIONS.</small>			THIRD ANGLE PROJECTION	MATERIAL H582V2	PROCESS/FINISH
			SIZE C	DRAWING NUMBER OL56100091-001	SHEET 1 OF 1

CERTIFICATION DATA SHEET

CUSTOMER
PO #:

CUSTOMER:
ORDER #:

CUSTOMER PART
#:

CONN. DIAGRAM: CDTD103
OUTLINE: OL56100091-001
WINDING #: NT5643 3A

MOUNTING: F1 ONLY

TYPICAL MOTOR PERFORMANCE DATA

HP	KW	SYNC. RPM	F.L. RPM	FRAME	ENCLOSURE	KVA CODE	DESIGN
3/4	0.56	1800	1750	56	DP	L	B

PH	HZ	VOLTS	AMPS	START TYPE	DUTY	INSL	S.F.	AMB°C
3	60	200-230/460	2.9-3.2/1.6	ACROSS THE LINE	CONTINUOUS	B3	1.25	40

FULL LOAD EFF:	75.5	3/4 LOAD EFF:	73.3	1/2 LOAD EFF:	67.3	GTD. EFF		ELEC. TYPE
FULL LOAD PF:	58.4	3/4 LOAD PF:	48.9	1/2 LOAD PF:	37.5	72		SQ CAGE IND RUN

F.L. TORQUE	LOCKED ROTOR AMPS	L.R. TORQUE	B.D. TORQUE	F.L. RISE°C
2.25 LB-FT	16.8 / 8.4	7.5 LB-FT 333 %	9.19 LB-FT 408 %	0

SOUND PRESSURE @ 3 FT.	SOUND POWER	ROTOR WK^2	MAX. WK^2	SAFE STALL TIME	STARTS / HOUR	APPROX. MOTOR WGT
0 DBA	10 DBA	0 LB-FT^2	0 LB-FT^2	0 SEC.	0	0 LBS.

***** SUPPLEMENTAL INFORMATION *****

DE BRACKET TYPE	ODE BRACKET TYPE	MOUNT TYPE	ORIENTATION	SEVERE DUTY	HAZARDOUS LOCATION	DRIP COVER	SCREENS	PAINT
STANDARD	STANDARD	RESILIENT BASE	HORIZONTAL	FALSE	NONE	FALSE	NONE	BLACK (POWDER)

BEARINGS	GREASE	SHAFT TYPE	SPECIAL DE	SPECIAL ODE	SHAFT MATERIAL	FRAME MATERIAL
DE ODE BALL BALL 6203 6203	POLYREX EM	STANDARD 56	NONE	NONE	AISI 1215 (MS1000)	ROLLED STEEL

THERMO-PROTECTORS				THERMISTORS		CONTROL		SPACE HEATERS	
THERMOSTATS	PROTECTORS	WDG RTDS	BRG RTDS	NONE	FALSE	NONE	NONE	NONE	VOLTS
NONE	NOT	NONE	NONE						

INVERTER TORQUE: NONE
INV. HP SPEED RANGE: NONE

ENCODER: NONE
NONE NONE
NONE NONE PPR

BRAKE: NONE NONE
NONE P/N NONE
NONE NONE
NONE FT-LB NONE V NONE HZ

*

PREPARED BY: Bhargavi Dontham
DATE: 08/29/2018 01:10:41 AM
FORM 3531 REV.3 02/07/99
** Subject to change without notice.

CENTURY

TYPICAL PERFORMANCE CURVE for AC MOTOR

Customer WW Grainger

Curve at

460

Volts

HP 0.75

PHASE 3

Model No H582V3

60

HZ

VOLTS 200-230/460

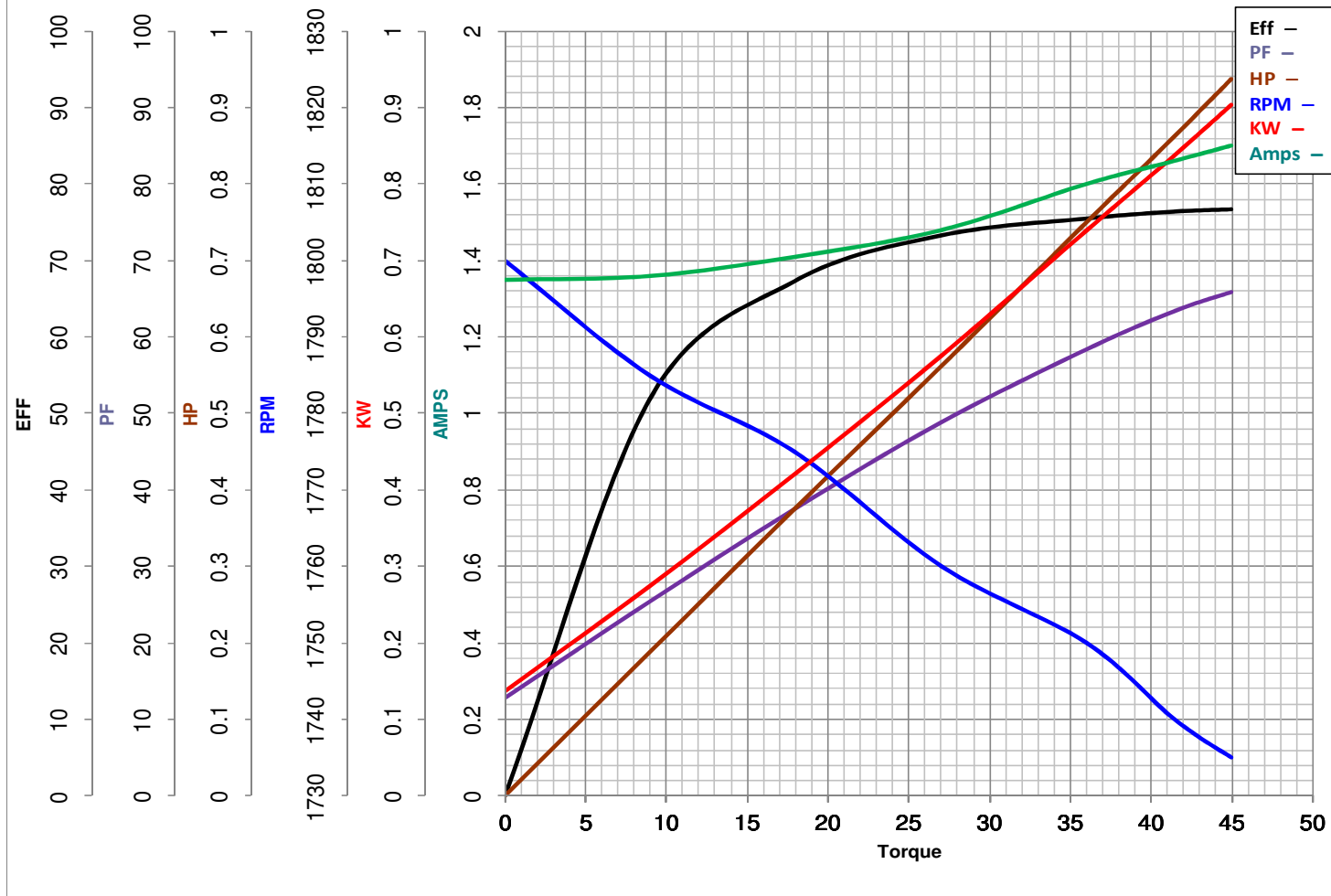
Catalog No H582V3

0.75

HP

HZ 60

RPM 1750



Torque in Oz.Ft

FL TORQUE 36 Oz.Ft
 BD TORQUE 147.0 Oz.Ft
 LR TORQUE 120 Oz.Ft

FL AMPS 2.9-3.2/1.6
 PU TORQUE 120.0 Oz.Ft
 LR AMPS 8.4

WINDING NT5643-3

Prepared By BHARGAVI

Date 8/27/2018