

PRODUCT INFORMATION PACKET



Model No: H031

Catalog No: H031

1/3 HP General Purpose Motor, 3 phase, 1200 RPM, 200-230/460 V, 56C Frame, TENV
Three Phase TENV Motors



Regal and Century are trademarks of Regal Beloit Corporation or one of its affiliated companies.

©2019 Regal Beloit Corporation, All Rights Reserved. MC017097E

REGAL



Nameplate Specifications

Output HP	1/3 Hp	Output KW	0.25 kW
Frequency	60 Hz	Voltage	200-230/460 V
Current	1.8-1.6/.80 A	Speed	1140 rpm
Service Factor	1.15	Phase	3
Duty	Continuous	Insulation Class	B
Frame	J56C	Enclosure	Totally Enclosed Non Ventilated
Thermal Protection	None	Ambient Temperature	40 °C
UL	Recognized	CSA	Y
CE	N		

Technical Specifications

Electrical Type	Polyphase, Induction Type, Single Or Dual Voltage	Starting Method	Across The Line
Poles	6	Rotation	Reversible Counterclockwise
Mounting	Round	Drive End Bearing	Ball
Opp Drive End Bearing	Ball	Frame Material	Rolled Steel
Shaft Type	Keyed	Overall Length	10.17 in
Frame Length	5.13 in	Shaft Diameter	0.625 in
Shaft Extension	2.07 in		

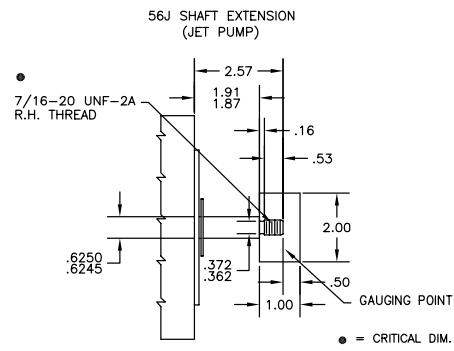
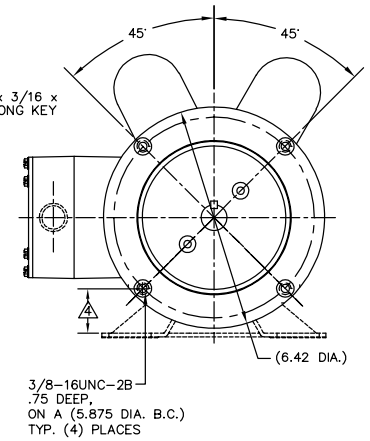
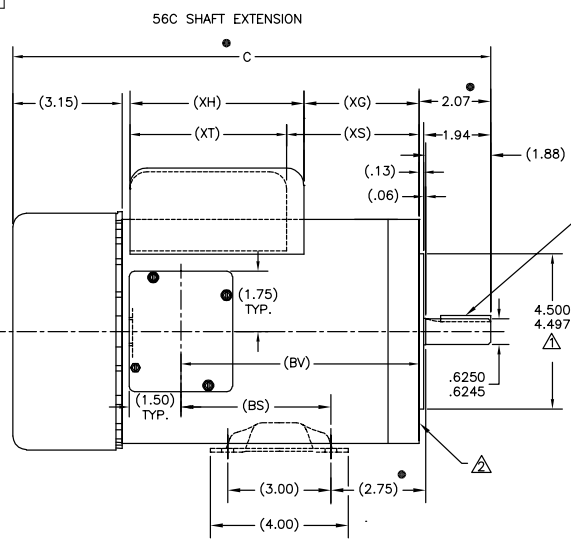
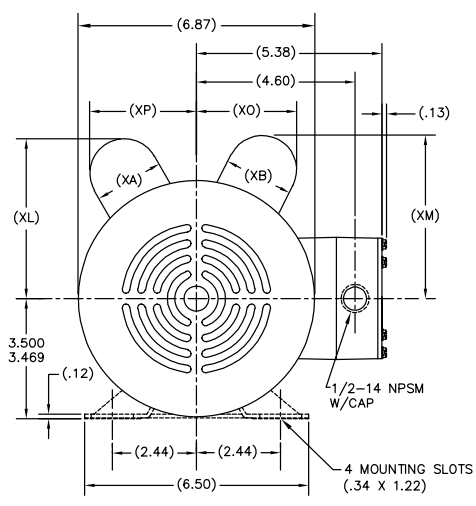
This is an uncontrolled document once printed or downloaded and is subject to change without notice. Date Created:04/11/2019

GRP	TYPE	FRAME	C	(BV)	(BS)	(XA)	(XB)	(XG)	(XH)	(XS)	(XT)	(XL)	(XM)	(XO)	(XP)
-01	CP	T56C	12.69	5.77	—	2.01	2.01	2.26	5.06	2.26	5.06	4.64	4.65	3.10	3.09
	CP	T56J	13.19	5.77	—	2.01	2.01	2.26	5.06	2.26	5.06	4.64	4.65	3.10	3.09
-02	CP	X56C	13.69	6.77	4.15	2.01	2.01	3.26	5.06	3.26	5.06	4.64	4.65	3.10	3.09
	CP	X56J	14.19	6.77	—	2.01	2.01	3.26	5.06	3.26	5.06	4.64	4.65	3.10	3.09
-03	CP	P56C	14.19	7.27	—	2.01	2.27	3.44	5.30	3.69	5.06	4.64	4.92	3.32	3.09
	CP	P56J	14.69	7.27	—	2.01	2.27	3.44	5.30	3.69	5.06	4.64	4.92	3.32	3.09
-04	CP	R56C	14.94	8.02	—	2.01	2.27	4.19	5.30	4.44	5.06	4.64	4.92	3.32	3.09
	CP	R56J	15.44	8.02	—	2.01	2.27	4.19	5.30	4.44	5.06	4.64	4.92	3.32	3.09

REV	ECO	REV BY	DATE	APPO	DATE
D	0012956	M.AVILA	06-02-2011	T.REYES	06-02-2011

ALL DIMENSIONS SHOWN IN PARENTHESIS ARE REFERENCE DIMENSIONS. ALL OTHER DIMENSIONS ARE TOLERANCED PER THE FOLLOWING CHART UNLESS OTHERWISE SPECIFIED.

"C" DIM. = +/- .055
 SHAFT EXT. = +/- .034
 LEAD LENGTHS = +/- 1.00
 EXTENDED THRU-BOLTS = +/- .050
 ANGULAR DIMS. = +/- 2 DEGS.



- NOTES:
- △ PILOT DIAMETER IS CONCENTRIC WITH SHAFT CENTERLINE WITHIN .004 T.I.R.
 - △ FACE OF MOUNTING FLANGE IS PERPENDICULAR TO SHAFT CENTERLINE WITHIN .004 T.I.R.
 - △ FOR RIGID BASE ONLY: THE 2 BOTTOM HOLES IN THE MOUNTING FLANGE ARE PARALLEL FROM THE BOTTOM OF THE FEET WITHIN .030
 - 5 END PLAY NOT TO EXCEED .010 MEASURED WITH NO THRUST
 - 3 SHAFT RUNOUT NOT TO EXCEED .002 T.I.R.

GEOMETRIC CHARACTERISTICS & SYMBOLS

- FLATNESS
- STRAIGHTNESS
- ANGULARITY
- PERPENDICULARITY (SQUARENESS)
- PARALLELISM
- ROUNDNESS (CIRCULARITY)
- CYLINDRICITY
- PROFILE OF ANY SURFACE
- PROFILE OF ANY LINE
- RUNOUT
- MACHINE SURFACES
- TRUE POSITION
- CONCENTRICITY
- SYMMETRY

UNLESS OTHERWISE SPECIFIED DIM. TOLERANCES ARE AS FOLLOWS:

INCH	±.1	±.02	±.005	±.0005
mm	±0.5	±0.13	±0.013	

ANG. ± 50 DEG
 REMOVE BURRS & BREAK SHARP EDGES:
 INCH .003-.015 mm 0.1-0.4
 CORNER FILLETS TO:
 INCH .020 mm 0.5
 RUNOUT:
 INCH 1/32 mm 0.8
 METRIC DIMS. SHOWN IN [BRACKETS]

DR BY:	RSH	12-01-1997
APPD:	TJD	12-01-1997
THIRD ANGLE PROJECTION	EDS DATE	EDS DATE
	FORMAT REV	F

CONFIDENTIAL: THIS DRAWING AND ITS INFORMATION ARE THE EXCLUSIVE AND CONFIDENTIAL PROPERTY OF A.O. SMITH CORP. AND ARE NOT TO BE DISCLOSED, DUPLICATED, DISTRIBUTED OR OTHERWISE USED WITHOUT THE WRITTEN CONSENT OF A.O. SMITH CORP.
 -ALL RIGHTS RESERVED. ASME Y14.5M 1994

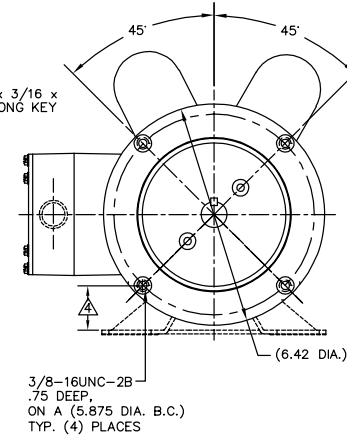
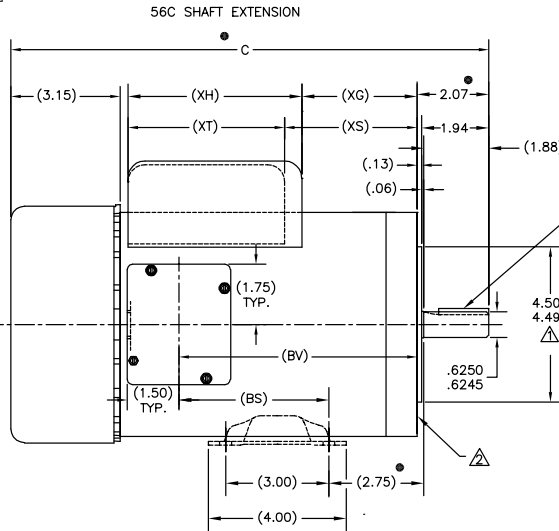
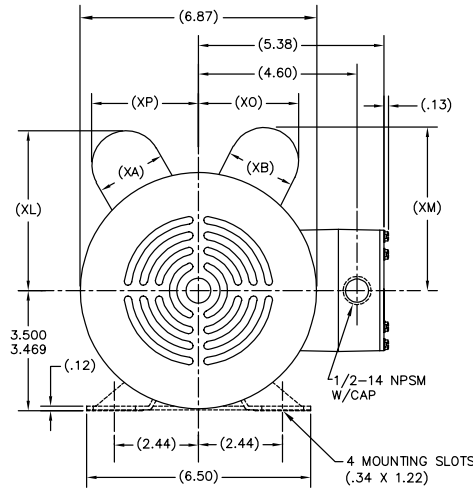
		ELECTRICAL PRODUCTS COMPANY <small>A Division of A.O. Smith Corporation</small>	
DESCRIPTION			
OUTLINE			
SCALE	NONE	SIZE	D
DWG NO	189033	SHEET	1

GRP	TYPE	FRAME	C	(BV)	(BS)	(XA)	(XB)	(XG)	(XH)	(XS)	(XT)	(XL)	(XM)	(XO)	(XP)
-01	CP	T56C	12.69	5.77	—	2.01	2.01	2.26	5.06	2.26	5.06	4.64	4.65	3.10	3.09
	CP	T56J	13.19	5.77	—	2.01	2.01	2.26	5.06	2.26	5.06	4.64	4.65	3.10	3.09
-02	CP	X56C	13.69	6.77	4.15	2.01	2.01	3.26	5.06	3.26	5.06	4.64	4.65	3.10	3.09
	CP	X56J	14.19	6.77	—	2.01	2.01	3.26	5.06	3.26	5.06	4.64	4.65	3.10	3.09
-03	CP	P56C	14.19	7.27	—	2.01	2.27	3.44	5.30	3.69	5.06	4.64	4.92	3.32	3.09
	CP	P56J	14.69	7.27	—	2.01	2.27	3.44	5.30	3.69	5.06	4.64	4.92	3.32	3.09
-04	CP	R56C	14.94	8.02	—	2.01	2.27	4.19	5.30	4.44	5.06	4.64	4.92	3.32	3.09
	CP	R56J	15.44	8.02	—	2.01	2.27	4.19	5.30	4.44	5.06	4.64	4.92	3.32	3.09

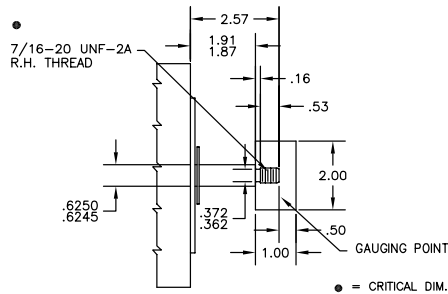
REVISION:	ECO	REVISADO POR:	M.AVILA	FECHA:	06-02-2011	APROBADO POR:	T.REYES	FECHA:	06-02-2011
D	0012956								

ALL DIMENSIONS SHOWN IN PARENTHESIS ARE REFERENCE DIMENSIONS. ALL OTHER DIMENSIONS ARE TOLERANCED PER THE FOLLOWING CHART UNLESS OTHERWISE SPECIFIED.

"C" DIM. = +/- .055
 SHAFT EXT. = +/- .034
 LEAD LENGTHS = +/- 1.00
 EXTENDED THRU-BOLTS = +/- .050
 ANGULAR DIMS. = +/- 2 DEGS.



56J SHAFT EXTENSION (JET PUMP)



NOTES:

- ⚠️ PILOT DIAMETER IS CONCENTRIC WITH SHAFT CENTERLINE WITHIN .004 T.I.R.
- ⚠️ FACE OF MOUNTING FLANGE IS PERPENDICULAR TO SHAFT CENTERLINE WITHIN .004 T.I.R.
- ⚠️ FOR RIGID BASE ONLY: THE 2 BOTTOM HOLES IN THE MOUNTING FLANGE ARE PARALLEL FROM THE BOTTOM OF THE FEET WITHIN .030
- 3 SHAFT RUNOUT NOT TO EXCEED .002 T.I.R.
- 5 END PLAY NOT TO EXCEED .010 MEASURED WITH NO THRUST

CARACTERISTICAS DE GEOMETRIA Y SIMBOLOS: □ PLANICIDAD — RECTITUD ⊥ ANGULARIDAD ⊥ PERPENDICULARIDAD (A ESQUADRA) // PARALELISMO ○ REDONDEZ (CIRCULARIDAD) ⌀ CILINDRICIDAD △ PERFIL DE CUALQUIER SUPERFICIE ~ PERFIL DE CUALQUIER LINEA / VARIACION ● POSICION REAL ⊙ CONCENTRICIDAD ± SIMETRIA	A MENOS QUE SE ESPECIFIQUE DE OTRA MANERA, LAS TOLERANCIAS DE LAS DIMS. SON LAS SIGUIENTES: PULG ±.1 ±.02 ±.005 ±.0005 mm ±0.5 ±0.13 ±0.013 ANG. ±50 GRADOS ELIMINAR REBABAS Y ORILLAS FILOSAS DEL BORDE PULG .003-.015 mm 0.1-0.4 FILETEAR ESQUINA: PULG .020 mm 0.5 MAQUINAR SUPERFICIES PULG 1/25 mm 3/2 DIMS METRICAS MOSTRADAS [PARENTESIS]	DIBUJADO POR: RSH APROBADO POR: LUD TERCER ANGULO DE PROYECCION: CONFIDENCIAL: ESTE DIBUJO Y SU INFORMACION SON PROPIEDAD DE USO EXCLUSIVO Y CONFIDENCIAL DE A.O. SMITH CORP. Y NO DEBERAN SER REVELADOS, DUPLICADOS, DISTRIBUIDOS O USARSE DE OTRA MANERA SIN EL CONSENTIMIENTO ESCRITO DE A.O. SMITH CORP. TODOS LOS DERECHOS RESERVADOS. ASME Y14.5M 1994
--	---	---

12-01-1997	12-01-1997	FECHA EDS: EDS DATE
12-01-1997	12-01-1997	REV. FORMATO: F
CONFIDENCIAL: ESTE DIBUJO Y SU INFORMACION SON PROPIEDAD DE USO EXCLUSIVO Y CONFIDENCIAL DE A.O. SMITH CORP. Y NO DEBERAN SER REVELADOS, DUPLICADOS, DISTRIBUIDOS O USARSE DE OTRA MANERA SIN EL CONSENTIMIENTO ESCRITO DE A.O. SMITH CORP. TODOS LOS DERECHOS RESERVADOS. ASME Y14.5M 1994		

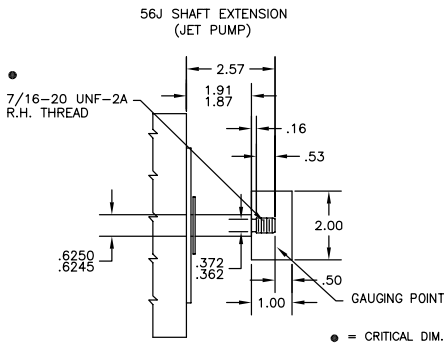
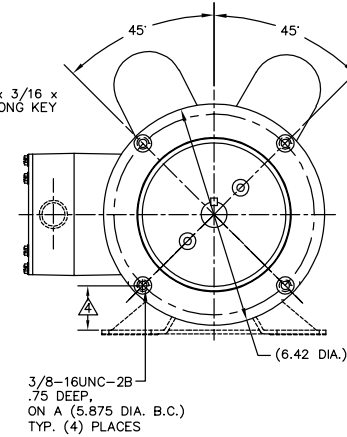
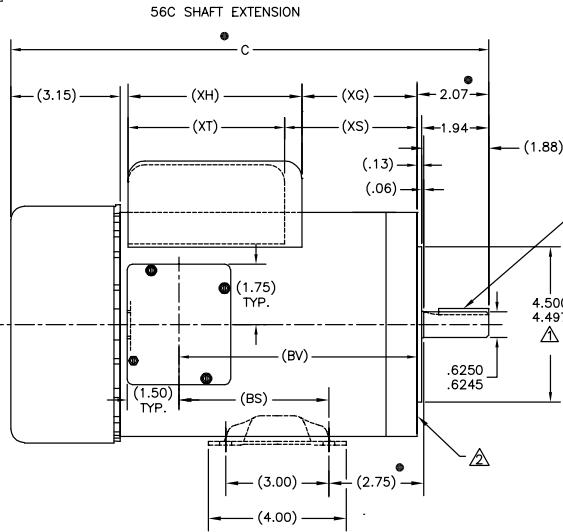
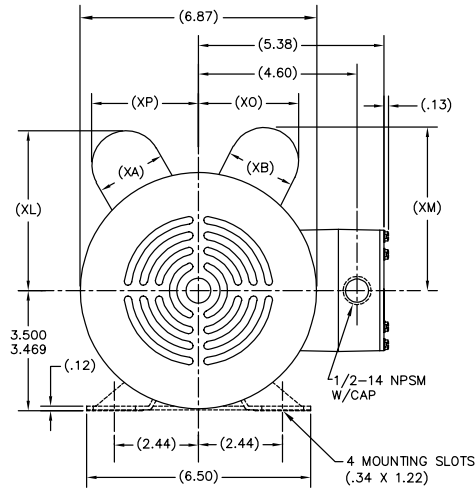
ELECTRICAL PRODUCTS COMPANY A Division of A.O. Smith Corporation	
DESCRIPCION:	OUTLINE
TAMANO: D	NUMERO DE DIBUJO: 189033
ESCALA: NONE	HOJA: 1

GRP	TYPE	FRAME	C	(BV)	(BS)	(XA)	(XB)	(XG)	(XH)	(XS)	(XT)	(XL)	(XM)	(XO)	(XP)
-01	CP	T56C	12.69	5.77	—	2.01	2.01	2.26	5.06	2.26	5.06	4.64	4.65	3.10	3.09
	CP	T56J	13.19	5.77	—	2.01	2.01	2.26	5.06	2.26	5.06	4.64	4.65	3.10	3.09
-02	CP	X56C	13.69	6.77	4.15	2.01	2.01	3.26	5.06	3.26	5.06	4.64	4.65	3.10	3.09
	CP	X56J	14.19	6.77	—	2.01	2.01	3.26	5.06	3.26	5.06	4.64	4.65	3.10	3.09
-03	CP	P56C	14.19	7.27	—	2.01	2.27	3.44	5.30	3.69	5.06	4.64	4.92	3.32	3.09
	CP	P56J	14.69	7.27	—	2.01	2.27	3.44	5.30	3.69	5.06	4.64	4.92	3.32	3.09
-04	CP	R56C	14.94	8.02	—	2.01	2.27	4.19	5.30	4.44	5.06	4.64	4.92	3.32	3.09
	CP	R56J	15.44	8.02	—	2.01	2.27	4.19	5.30	4.44	5.06	4.64	4.92	3.32	3.09

REV:	ECO	REV:	MAVLA	DATE:	06-02-2011	REV:	T.REYES	DATE:	06-02-2011
D	0012956								

ALL DIMENSIONS SHOWN IN PARENTHESIS ARE REFERENCE DIMENSIONS. ALL OTHER DIMENSIONS ARE TOLERANCED PER THE FOLLOWING CHART UNLESS OTHERWISE SPECIFIED.

"C" DIM. = +/- .055
 SHAFT EXT. = +/- .034
 LEAD LENGTHS = +/- 1.00
 EXTENDED THRU-BOLTS = +/- .050
 ANGULAR DIMS. = +/- 2 DEGS.



NOTES:

- ⚠️ PILOT DIAMETER IS CONCENTRIC WITH SHAFT CENTERLINE WITHIN .004 T.I.R.
- ⚠️ FACE OF MOUNTING FLANGE IS PERPENDICULAR TO SHAFT CENTERLINE WITHIN .004 T.I.R.
- 3 SHAFT RUNOUT NOT TO EXCEED .002 T.I.R.
- ⚠️ FOR RIGID BASE ONLY: THE 2 BOTTOM HOLES IN THE MOUNTING FLANGE ARE PARALLEL FROM THE BOTTOM OF THE FEET WITHIN .030
- 5 END PLAY NOT TO EXCEED .010 MEASURED WITH NO THRUST

形位公差 Z 平面度 — 圆跳度 ∠ 斜跳度 ⊥ 垂直度 ∥ 平行度 O 圆跳度 ⊙ 圆跳度 ⊖ 圆跳度 ⊕ 圆跳度 ⊗ 圆跳度 ⊘ 圆跳度 ⊙ 圆跳度 ⊗ 圆跳度 ⊘ 圆跳度	除另有注明 尺寸公差如下: 英寸 ±.1, ±.02, ±.005, ±.0005 毫米 ±0.5, ±0.13, ±0.013 公差毛刺和尖角 英寸: 0.005 毫米: 0.1-0.4 内圆角 — 英寸: 0.02 毫米: 0.5 表面粗糙度 — 实际: 0.25 参考: 0.25 未标注尺寸按公差表
--	---

设计:	RSH	12-01-1997
批准:	TJD	12-01-1997
第三角投影	⊕ ⊖	图例格式版本 EDS DATE F
机密: 本图纸及相关信息所有权归 A. O. SMITH 公司所有。未经 A. O. SMITH 公司书面授权, 不得泄露、复制、传播或作其他用途。— 版权所有		
图幅:	D	图号 189033
比例:	NONE	页号 1

ASmith ELECTRICAL PRODUCTS COMPANY
 A Division of A. O. Smith Corporation
OUTLINE
 ASME Y14.5M 1994