

PRODUCT INFORMATION PACKET



Model No: F680V1
Catalog No: F680V1

0.75 HP Fan and Blower HVAC/R Motor, 1 phase, 1800 RPM, 115/230 V, 56 Frame, ODP
Self Cooled Motors



Regal and Century are trademarks of Regal Beloit Corporation or one of its affiliated companies.
©2019 Regal Beloit Corporation, All Rights Reserved. MC017097E

The REGAL logo consists of the word 'REGAL' in a bold, white, sans-serif font, set against a dark grey, trapezoidal background. The background of the entire page features a blue and black halftone pattern that tapers towards the right edge.



Nameplate Specifications

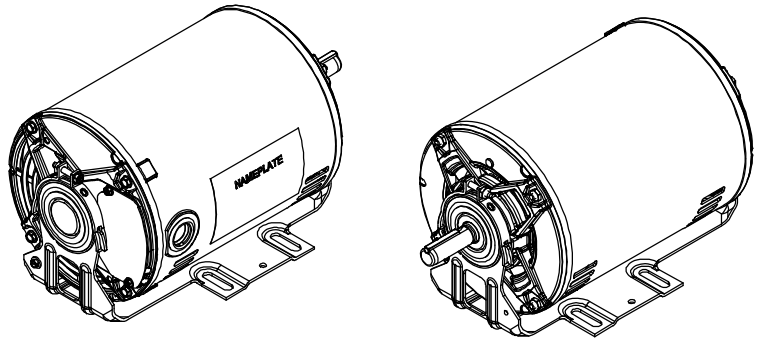
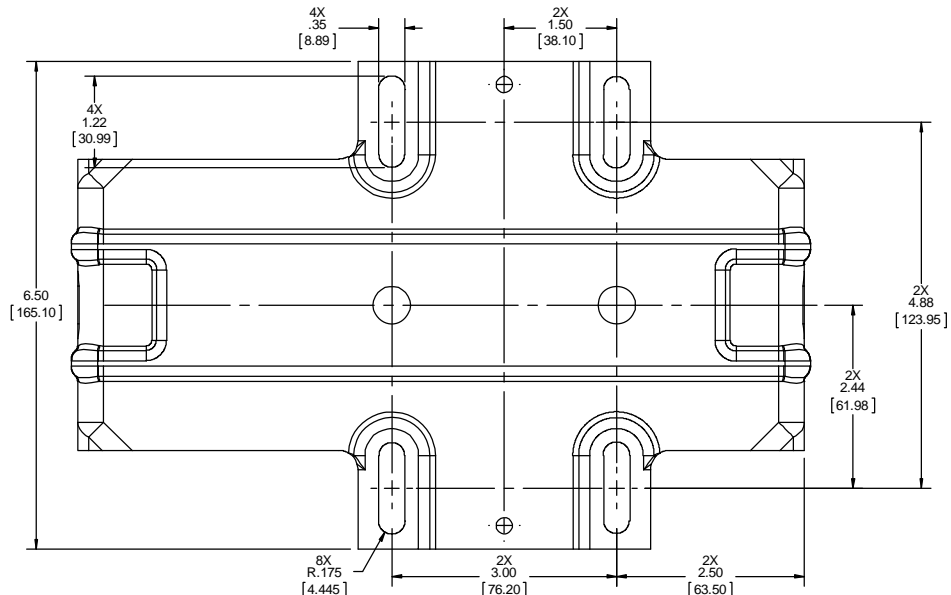
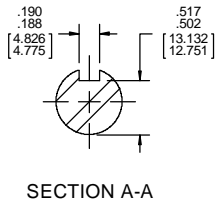
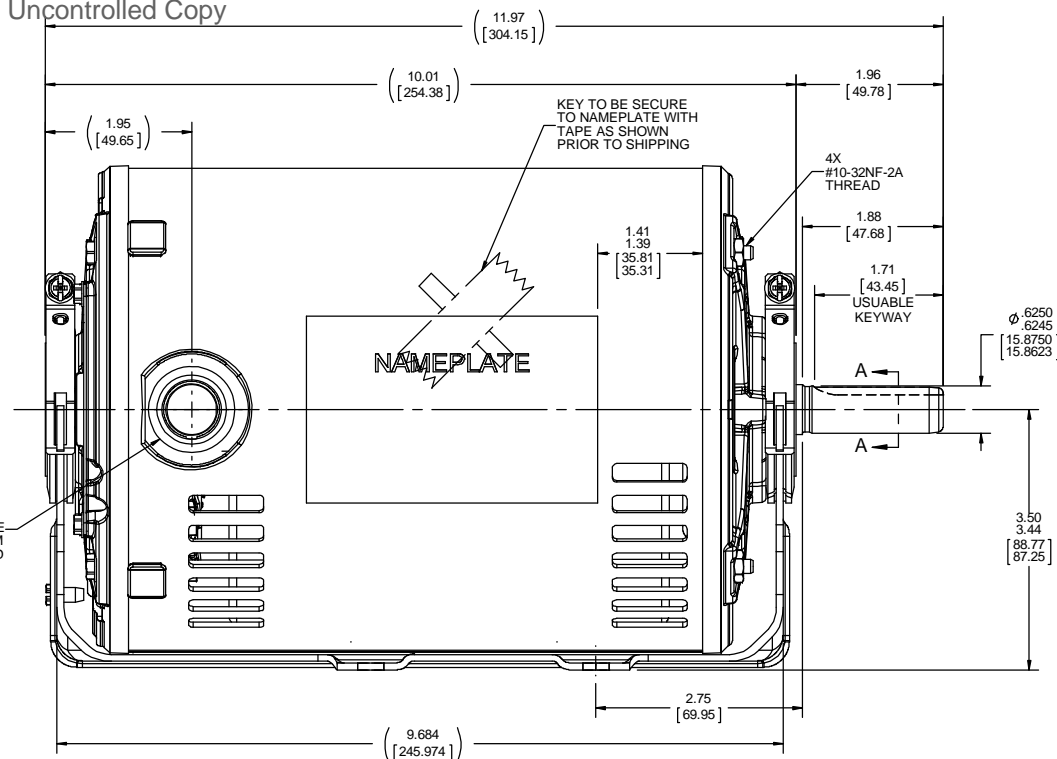
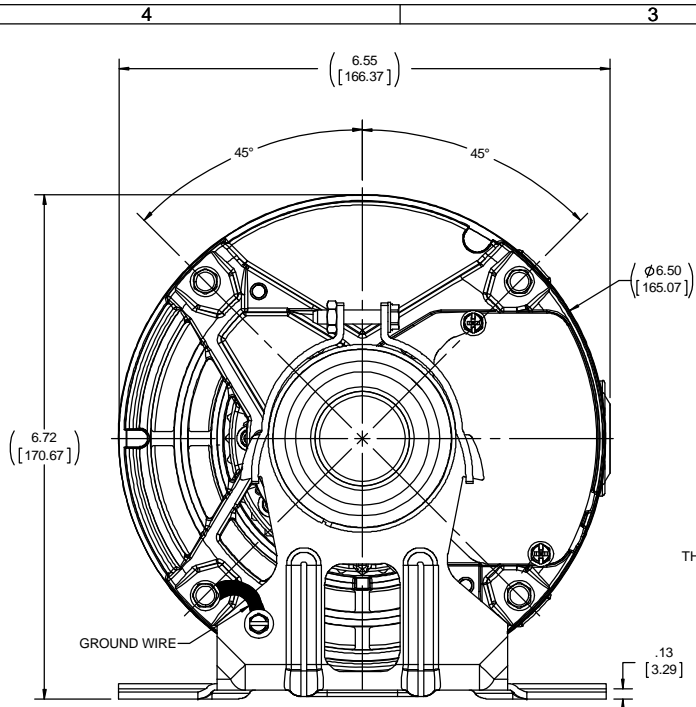
Output HP	0.75 Hp	Output KW	0.56 kW
Frequency	60 Hz	Voltage	115/230 V
Current	9.6/4.8&10.4/5.2 A	Speed	1725&1425 rpm
Phase	1	Duty	Continuous
Insulation Class	B	Frame	56
Enclosure	Drip Proof	Thermal Protection	Thermally Protected
Ambient Temperature	40 °C	UL	Recognized
CSA	Y	CE	Y

Technical Specifications

Electrical Type	Split Phase	Starting Method	Across The Line
Poles	4	Rotation	Selective Counterclockwise
Mounting	Resilient Base	Drive End Bearing	Ball
Opp Drive End Bearing	Ball	Frame Material	Rolled Steel
Shaft Type	NEMA 56	Overall Length	12.04 in
Frame Length	7.65 in	Shaft Diameter	0.625 in
Shaft Extension	1.88 in		

This is an uncontrolled document once printed or downloaded and is subject to change without notice. Date Created:30/10/2019

Uncontrolled Copy



DRAWING REVISION B		REVISION BY SHESHI	DATE 01/10/2019	TOLERANCES UNLESS OTHERWISE SPECIFIED:			DRAWN BY J.RUIZ		Regal Beloit America, Inc.	
ECO-0159623		APPROVED BY D.SURYANSHI	DATE 01/10/2019	DEC.	INCH	mm	ANGLE	DATE 06-10-2016		
ECO DESCRIPTION				.X	±0.1	[±2.5]	±0.5°	APPROVED BY J.ORTEGA	DESCRIPTION	
UPDATED MOTOR ASSY				.XX	±0.03	[±0.76]		DATE 06-10-2016	MATERIAL	
<small>COPYRIGHT REGAL BELOIT AMERICA, INC. ALL RIGHTS RESERVED. PROPRIETARY AND CONFIDENTIAL INFORMATION. THIS DOCUMENT IS THE PROPERTY OF REGAL BELOIT AMERICA, INC. FORMERLY AND CONTAINS OWNERS PROPRIETARY INFORMATION. ANY PERSON, CORPORATION OR OTHER FIRM RECEIVING IT IS DEEMED TO HAVE AGREED TO THE TERMS AND CONDITIONS OF THIS DOCUMENT. IT IS TO BE RETURNED TO ANY PERSON, CORPORATION OR OTHER ENTITY, DUPLICATED, AND/OR USED, EXCEPT AS EXPRESSLY APPROVED IN WRITING IN ADVANCE BY OWNER. THIS DOCUMENT SHALL BE RETURNED TO OWNER UPON REQUEST. IT MAY BE SUBJECT TO CERTAIN RESTRICTIONS UNDER APPLICABLE EXPORT CONTROL LAWS AND REGULATIONS.</small>				.XXX	±0.005	[±0.127]		REFERENCE F680	PROCESS/FINISH	
				.XXXX	±0.0005	[±0.0127]		THIRD ANGLE PROJECTION	SIZE	
				REMOVE BURRS & BREAK SHARP EDGES: .0031/.015 [0.076/381] X 45° CORNER FILLETS: R.02 [51]					DRAWING NUMBER	SHEET
				MACHINED SURFACES: 125 / 32 INCH/ mm SHOWN IN [BRACKETS]					OL56100105-001	1 OF 1

**CERTIFICATION DATA SHEET
CUSTOMER
PO #:**

CUSTOMER:
ORDER #:
CONN. DIAGRAM: CDSDD101
CUSTOMER PART #:

OUTLINE: 0L56100105-001
WINDING #: NS5642 3 A
MOUNTING: F1 ONLY

TYPICAL MOTOR PERFORMANCE DATA

HP	KW	SYNC. RPM	F.L. RPM	FRAME	ENCLOSURE	KVA CODE	DESIGN
3/4&3/4	0.56&0.56	1500	1725&1425	56	DP	K	NO DESIGN CODE

PH	Hz	VOLTS	AMPS	START TYPE	DUTY	INSL	S.F.	AMB°C
1	60/50	115/230&115/230	9.6/4.8&10.4/5.2	ACROSS THE LINE	CONTINUOUS	B3	1.25/1.25	40

FULL LOAD EFF:	70&68	3/4 LOAD EFF:	68.7	1/2 LOAD EFF:	66	GTD. EFF	64	ELEC. TYPE	SPLTT PHASE
FULL LOAD PF:	72.5&70.5	3/4 LOAD PF:	62	1/2 LOAD PF:	49.7				

F.L. TORQUE	LOCKED ROTOR AMPS	L.R. TORQUE	B.D. TORQUE	F.L. RISE°C
2.687 LB-FT	55.5 / 27.7	2.34 LB-FT	87.21 %	5.69 LB-FT
				211.62 %
				0

SOUND PRESSURE @ 3 FT.	SOUND POWER	ROTOR WK^2	MAX. WK^2	SAFE STALL TIME	STARTS / HOUR	APPROX. MOTOR WGT
0 DBA	10 DBA	0 LB-FT^2	0 LB-FT^2	0 SEC.	0	0 LBS.

*** SUPPLEMENTAL INFORMATION ***

DE BRACKET TYPE	ODE BRACKET TYPE	MOUNT TYPE	ORIENTATION	SEVERE DUTY	HAZARDOUS LOCATION	DRIP COVER	SCREENS	PAINT
STANDARD	STANDARD	RESILIENT BASE	HORIZONTAL	FALSE	NONE	FALSE	NONE	BLACK (POWDER)

BEARINGS		GREASE	SHAFT TYPE	SPECIAL DE	SPECIAL ODE	SHAFT MATERIAL	FRAME MATERIAL
DE	ODE						
BALL	BALL	POLYREX EM	STANDARD 56	NONE	NONE	AISI 1215 (MS1000)	ROLLED STEEL
6203	6203						

THERMO-PROTECTORS				THERMISTORS		CONTROL		SPACE HEATERS	
THERMOSTATS	PROTECTORS	WDG RTDS	BRG RTDS						
NONE	AUTOMATIC	NONE	NONE	NONE	FALSE	NONE	NONE	NONE	VOLTS

INVERTER TORQUE: NONE
INV. HP SPEED RANGE: NONE

ENCODER:	NONE	NONE	NONE
BRAKE:	NONE	NONE	NONE
	P/N	NONE	NONE
	NONE	NONE	NONE
	FT-LB	NONE	V
	NONE	NONE	NONE
		NONE	Hz

*

PREPARED BY: Bhargavi Dontham
DATE: 08/27/2018 04:56:42 AM
FORM 3531 REV.3 02/07/99
** Subject to change without notice.

CERTIFICATION DATA SHEET

**CUSTOMER
PO #:**

CUSTOMER:
ORDER #:

**CUSTOMER PART
#:**

CONN. DIAGRAM: CDSDD101
OUTLINE: OL56100105-001
WINDING #: NS5642 3 A

MOUNTING: F1 ONLY

TYPICAL MOTOR PERFORMANCE DATA

HP	KW	SYNC. RPM	F.L. RPM	FRAME	ENCLOSURE	KVA CODE	DESIGN
3/4&3/4	0.56&0.56	1800	1725&1425	56	DP	K	NO DESIGN CODE

PH	Hz	VOLTS	AMPS	START TYPE	DUTY	INSL	S.F.	AMB° C
1	60/50	115/230&115/230	9.6/4.8&10.4/5.2	ACROSS THE LINE	CONTINUOUS	B3	1.25/1.25	40

FULL LOAD EFF:	70&68	3/4 LOAD EFF:	71.3	1/2 LOAD EFF:	68.5	GTD. EFF	66	ELEC. TYPE	SPLIT PHASE
FULL LOAD PF:	72.5&70.5	3/4 LOAD PF:	64.1	1/2 LOAD PF:	52.2				

F.L. TORQUE	LOCKED ROTOR AMPS	L.R. TORQUE	B.D. TORQUE	F.L. RISE° C
2.256 LB-FT	56.7 / 28.4	1.93 LB-FT	85.32 %	5.03 LB-FT
				222.71 %
				0

SOUND PRESSURE @ 3 FT.	SOUND POWER	ROTOR WK^2	MAX. WK^2	SAFE STALL TIME	STARTS / HOUR	APPROX. MOTOR WGT
0 DBA	10 DBA	0 LB-FT^2	0 LB-FT^2	0 SEC.	0	0 LBS.

***** SUPPLEMENTAL INFORMATION *****

DE BRACKET TYPE	ODE BRACKET TYPE	MOUNT TYPE	ORIENTATION	SEVERE DUTY	HAZARDOUS LOCATION	DRIP COVER	SCREENS	PAINT
STANDARD	STANDARD	RESILIENT BASE	HORIZONTAL	FALSE	NONE	FALSE	NONE	BLACK (POWDER)

BEARINGS	GREASE	SHAFT TYPE	SPECIAL DE	SPECIAL ODE	SHAFT MATERIAL	FRAME MATERIAL
DE ODE						
BALL BALL	POLYREX EM	STANDARD 56	NONE	NONE	AISI 1215 (MS1000)	ROLLED STEEL
6203 6203						

THERMO-PROTECTORS				THERMISTORS		CONTROL		SPACE HEATERS	
THERMOSTATS	PROTECTORS	WDG RTDS	BRG RTDS						
NONE	AUTOMATIC	NONE	NONE	NONE	FALSE	NONE	NONE	NONE	VOLTS

INVERTER TORQUE: NONE
INV. HP SPEED RANGE: NONE

ENCODER:	NONE
	NONE
	NONE
	PPR

BRAKE:	NONE	NONE
	NONE	P/N NONE
	NONE	NONE
	FT-LB	NONE V NONE HZ

*

PREPARED BY: Bhargavi Dontham
DATE: 08/27/2018 04:56:42 AM
FORM 3531 REV.3 02/07/99
** Subject to change without notice.

CENTURY

TYPICAL PERFORMANCE CURVE for AC MOTOR

Customer WW Grainger

Curve at

230

Volts

HP 0.75&0.75

PHASE 1

Model No F680V1

60

HZ

VOLTS 115/230&115/230

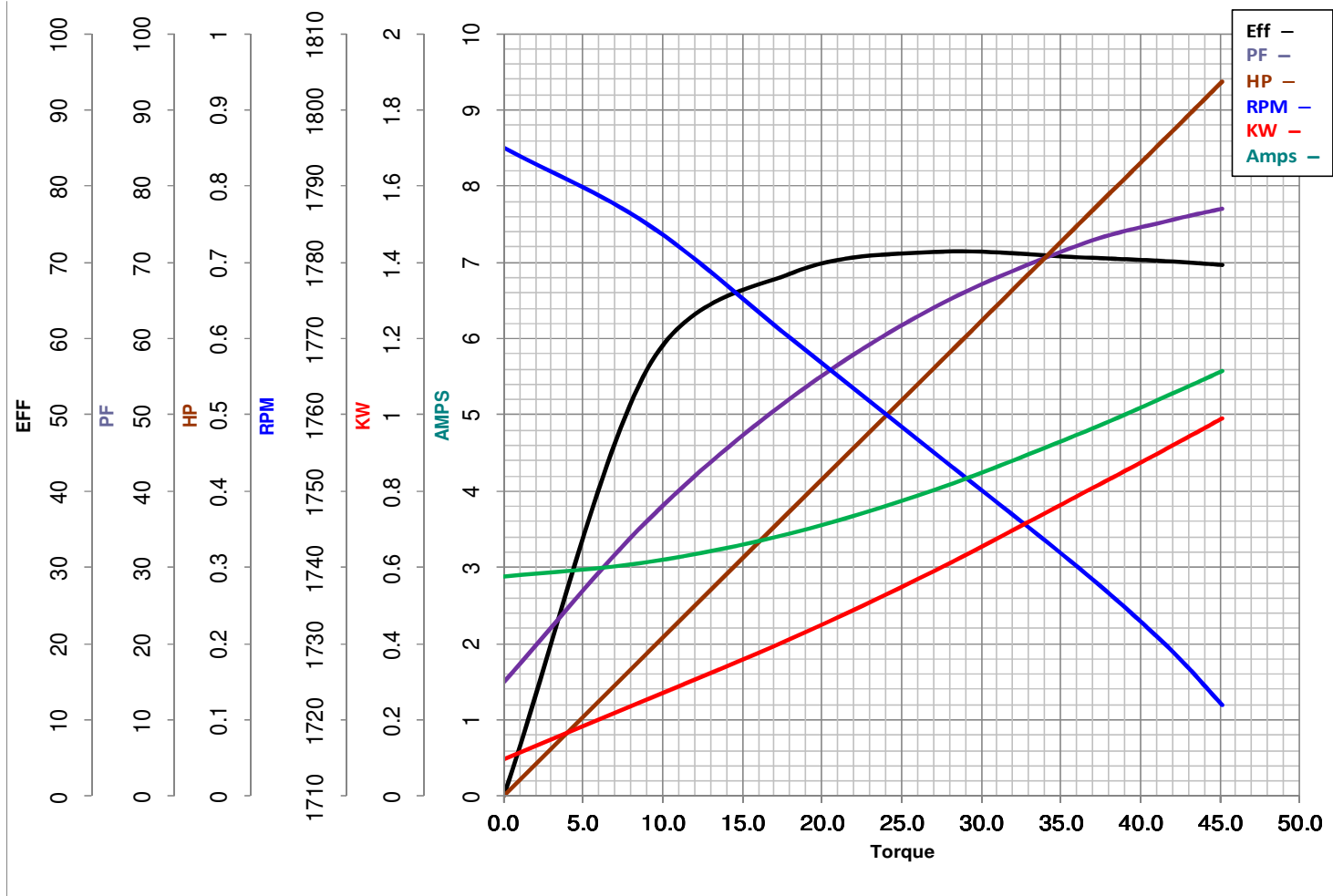
Catalog No F680V1

0.75

HP

HZ 60&50

RPM 1725&1425



Torque in Oz.Ft

FL TORQUE 36.1 Oz.Ft

BD TORQUE 80.5 Oz.Ft

LR TORQUE 30.88 Oz.Ft

FL AMPS 9.6/4.8

PU TORQUE 25.3 Oz.Ft

LR AMPS 28.36

WINDING NS5642-3

Prepared By

BHARGAVI

Date

8/27/2018