

PRODUCT INFORMATION PACKET



Model No: F433ES
Catalog No: F433ES
1/4 HP General Purpose Motor, 1 phase, 1800 RPM, 110/220 V, 48 Frame, ODP
Single Phase ODP Motors



Regal and Century are trademarks of Regal Beloit Corporation or one of its affiliated companies.
©2019 Regal Beloit Corporation, All Rights Reserved. MC017097E

The REGAL logo is a grey rectangular box with the word 'REGAL' in white, bold, uppercase letters. It is positioned on a blue, textured vertical bar that runs down the right side of the page.

REGAL



Nameplate Specifications

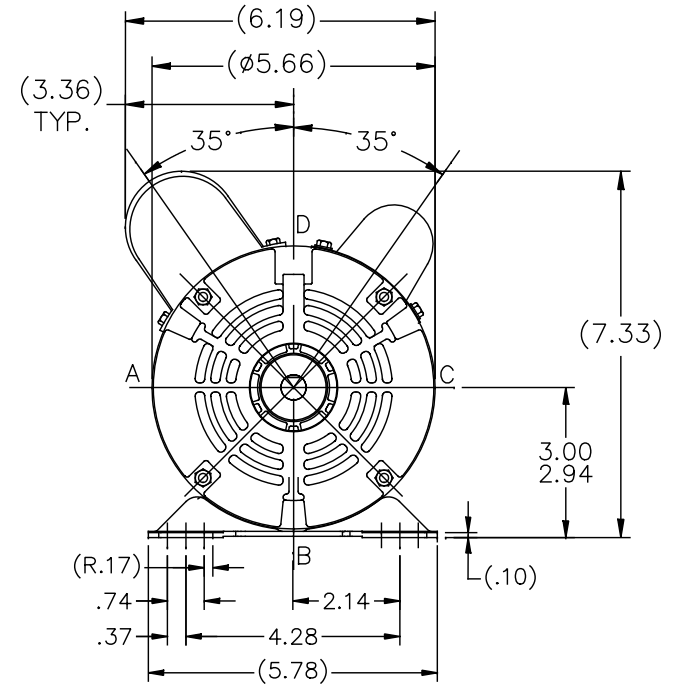
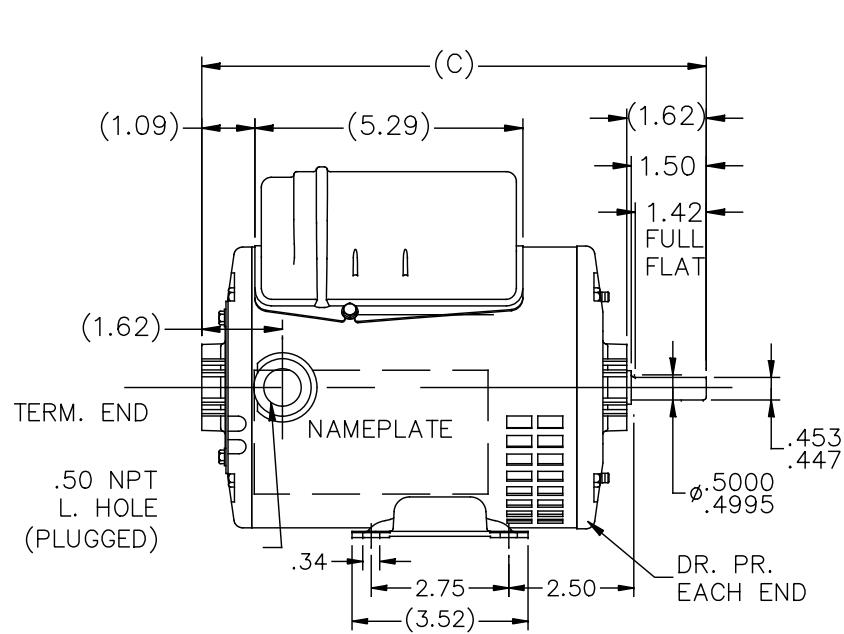
Output HP	1/4 Hp	Output KW	0.19 kW
Frequency	60 Hz	Voltage	110/220 V
Current	2.5/1.25 A	Speed	1725 rpm
Service Factor	1	Phase	1
Duty	Continuous	Insulation Class	B
Frame	48	Enclosure	Open Drip Proof
Thermal Protection	Automatic	Ambient Temperature	40 °C
UL	Recognized	CSA	Y
CE	Y		

Technical Specifications

Electrical Type	Shaded Pole	Starting Method	Across The Line
Poles	4	Rotation	Clockwise/Counterclockwise
Mounting	Rigid base	Drive End Bearing	Ball
Opp Drive End Bearing	Ball	Frame Material	Rolled Steel
Shaft Type	Flat	Overall Length	10.37 in
Frame Length	6.75 in	Shaft Diameter	0.500 in
Shaft Extension	1.50 in		

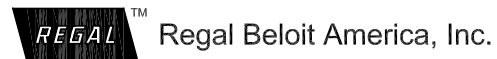
This is an uncontrolled document once printed or downloaded and is subject to change without notice. Date Created:30/10/2019

SS404240



DASH	C	DASH	C
625	9.87	725	10.87
650	10.12	750	11.12
675	10.37	775	11.37
700	10.62	800	11.62

		TOLERANCES UNLESS SPECIFIED		DRAWN AS 12/19/16				
		DEC.	INCHES	CHK PVR 12/19/16				
		.X	±.1	APPD PVR 12/19/16				
		.XX	±.03	SCALE 1:1				
		.XXX	±.005	REF SS404232				
A	NEW DRAWING	AS 12/19/16	PVR .XXXX ±.0005	MAT'L.				
NO.	REVISION	BY & DATE	CHK ANG ±7'30"	FINISH				
THIS DRAWING IN DESIGN AND DETAIL IS OUR PROPERTY AND MUST NOT BE USED EXCEPT IN CONNECTION WITH OUR WORK ALL RIGHTS OF DESIGN AND INVENTION ARE RESERVED THIS IS AN ELECTRONICALLY GENERATED DOCUMENT - DO NOT SCALE THIS PRINT				RFP	CAD FILE SS404240	SIZE A	DRAWING NO. PAGE 1 OF 1	REV. A
				DIST WP			SS404240	



TITLE
OUTLINE
48 FRAME



TO REVERSE EITHER VOLTAGE
INTERCHANGE BLACK WITH RED LEADS

PLATE: 41365

SLOT: 22

				TOLERANCES UNLESS SPECIFIED			DRAWN TOM 09-05-1989		
				DEC.	INCHES		CHK	ML	09-11-1989
				.X	± -	TITLE CONNECTION DIAGRAM	APPD	MB	09-11-1989
3	ADDED BLACK LEAD	KK	4/02/16	.XX	± -		SCALE	1=1	
2	REVISED BLUE LEAD WAS WHITE CN 37698	NJS	02-05-2004	JET	.XXX ± -		REF		
1	NEW DRAWING	TOM	09-05-1989	.XXXX	± -		MAT'L.	FMF	
NO.	REVISION	BY & DATE	CHK	ANG	± -	FINISH	PREV		
THIS DRAWING IN DESIGN AND DETAIL IS OUR PROPERTY AND MUST NOT BE USED EXCEPT IN CONNECTION WITH OUR WORK ALL RIGHTS OF DESIGN AND INVENTION ARE RESERVED THIS IS AN ELECTRONICALLY GENERATED DOCUMENT - DO NOT SCALE THIS PRINT			RFP	CAD FILE 9513742		SIZE	DRAWING NO.	PAGE OF	REV.
			DIST	WP		A	9513742	3	3