

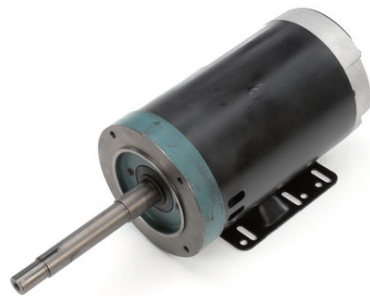
PRODUCT INFORMATION PACKET



Model No: E118E

Catalog No: E118E

1.0 HP Close-Coupled Pump Motor, 3 phase, 1800 RPM, 230/460 V, 143JP Frame, ODP
JP Motors



Regal and Century are trademarks of Regal Beloit Corporation or one of its affiliated companies.

©2019 Regal Beloit Corporation, All Rights Reserved. MC017097E

The REGAL logo consists of the word 'REGAL' in a bold, white, sans-serif font, set within a dark grey, trapezoidal shape that tapers to the right. This logo is positioned on a vertical blue gradient bar that runs down the right side of the page.

REGAL



Nameplate Specifications

Output HP	1.0 Hp	Output KW	0.75 kW
Frequency	60 Hz	Voltage	230/460 V
Current	3.0/1.5 A	Speed	1745/1425 rpm
Service Factor	1.25	Phase	3
Duty	Continuous	Insulation Class	B
Frame	P143JP	Enclosure	Drip Proof
Thermal Protection	None	Ambient Temperature	40 °C
UL	No	CSA	Y
CE	N		

Technical Specifications

Electrical Type	Polyphase, Induction Type, Single Or Dual Voltage	Starting Method	Across The Line
Poles	4	Rotation	Reversible Counterclockwise
Mounting	Rigid Base	Drive End Bearing	Ball
Opp Drive End Bearing	Ball	Frame Material	Rolled Steel
Shaft Type	Keyed	Overall Length	19.49 in
Frame Length	8.00 in	Shaft Diameter	1.156 in
Shaft Extension	7.344 in		

This is an uncontrolled document once printed or downloaded and is subject to change without notice. Date Created:04/11/2019