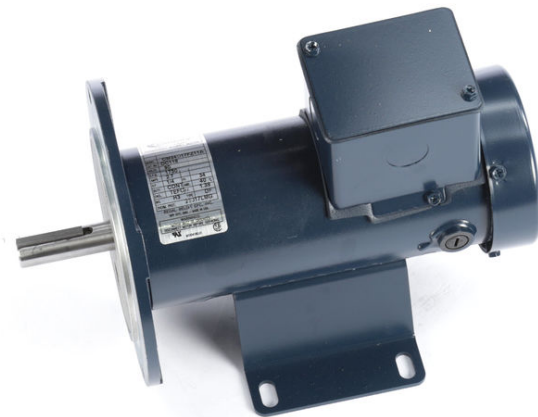


PRODUCT INFORMATION PACKET



Model No: DC118
Catalog No: DC118
1/4 HP SCR Motor, 1750 RPM, 90 V, 34 Frame, TEFC
SCR Motors



Regal and Century are trademarks of Regal Beloit Corporation or one of its affiliated companies.
©2019 Regal Beloit Corporation, All Rights Reserved. MC017097E

The REGAL logo consists of the word 'REGAL' in a bold, white, sans-serif font, set against a dark grey rectangular background with a slight shadow effect.

REGAL



Nameplate Specifications

Output HP	1/4 Hp	Output KW	0.19 KW
Voltage	90 V	Current	2.7 A
Speed	1750 rpm	Service Factor	1
Duty	Continuous	Insulation Class	H
Frame	34	Enclosure	Totally Enclosed Fan Cooled
Thermal Protection	No	Ambient Temperature	40 °C
UL	Recognized	CSA	Y
CE	N		

Technical Specifications

Electrical Type	DC Permanent Magnet	Starting Method	Across The Line
Rotation	Reversible	Mounting	Rigid base
Drive End Bearing	Ball	Opp Drive End Bearing	Ball
Frame Material	Rolled Steel	Shaft Type	Keyed
Overall Length	10.65 in	Frame Length	7.18 in
Shaft Diameter	0.625 in	Shaft Extension	2.06 in

This is an uncontrolled document once printed or downloaded and is subject to change without notice. Date Created:30/10/2019