

PRODUCT INFORMATION PACKET



Model No: DC113
Catalog No: DC113
1/2 HP SCR Motor, 1750 RPM, 90 V, 56C Frame, TEFC
SCR Motors



Regal and Century are trademarks of Regal Beloit Corporation or one of its affiliated companies.
©2019 Regal Beloit Corporation, All Rights Reserved. MC017097E

The REGAL logo consists of the word "REGAL" in a bold, white, sans-serif font, set against a dark grey rectangular background with a slight shadow effect.



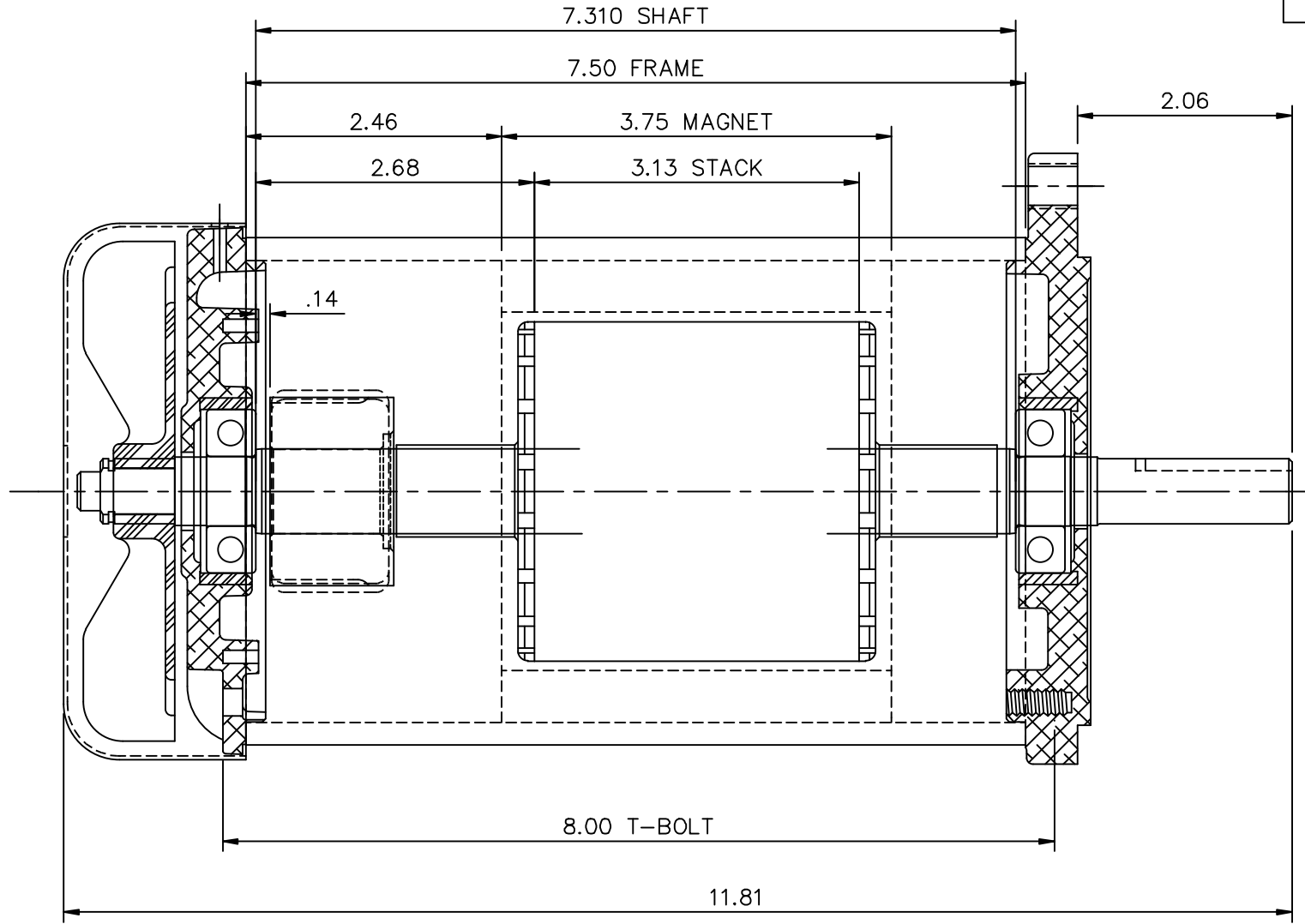
Nameplate Specifications

Output HP	1/2 Hp	Output KW	0.37 KW
Voltage	90 V	Current	5 A
Speed	1750 rpm	Service Factor	1
Duty	Continuous	Insulation Class	H
Frame	SS56C	Enclosure	Totally Enclosed Fan Cooled
Thermal Protection	No	Ambient Temperature	40 °C
UL	Recognized	CSA	Y
CE	N		

Technical Specifications

Electrical Type	DC Permanent Magnet	Starting Method	Across The Line
Rotation	Reversible	Mounting	Round
Drive End Bearing	Ball	Opp Drive End Bearing	Ball
Frame Material	Rolled Steel	Shaft Type	Keyed
Overall Length	11.81 in	Frame Length	7.50 in
Shaft Diameter	0.625 in	Shaft Extension	2.06 in

This is an uncontrolled document once printed or downloaded and is subject to change without notice. Date Created:30/10/2019



				TOLERANCES UNLESS SPECIFIED		DRAWN IPG 9/14/12	
				DEC.	INCHES	CHK	
				.X	±.1	APPD	
				.XX	±.01	SCALE 5=8	
				.XXX	±.005	REF 098379	
00	RELEASED	IPG 9/14/12	.XXXX	±.0005	MAT'L.	FMF DC113	
NO.	REVISION	BY & DATE	CHK	ANG ±1/2'	FINISH	PREV	
THIS DRAWING IN DESIGN AND DETAIL IS OUR PROPERTY AND MUST NOT BE USED EXCEPT IN CONNECTION WITH OUR WORK ALL RIGHTS OF DESIGN AND INVENTION ARE RESERVED THIS IS AN ELECTRONICALLY GENERATED DOCUMENT - DO NOT SCALE THIS PRINT			RFP	CAD FILE	DC113	SIZE A	DRAWING NO. DC113
			DIST				REV. 00



TITLE LAYOUT
42 FRAME DC