

PRODUCT INFORMATION PACKET



Model No: CPO10

Catalog No: CPO10

1 HP Close-Coupled Pump Motor, 3 phase, 1800 RPM, 208-230/460 V, 143JM Frame, ODP
JM Motors



Regal and Century are trademarks of Regal Beloit Corporation or one of its affiliated companies.

©2019 Regal Beloit Corporation, All Rights Reserved. MC017097E

The REGAL logo consists of the word 'REGAL' in a bold, white, sans-serif font, set against a dark grey rectangular background with a slight shadow effect.

REGAL



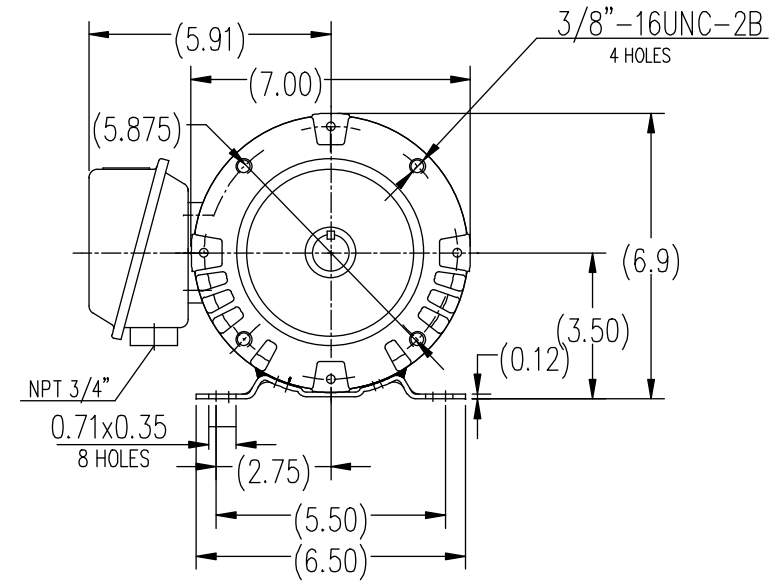
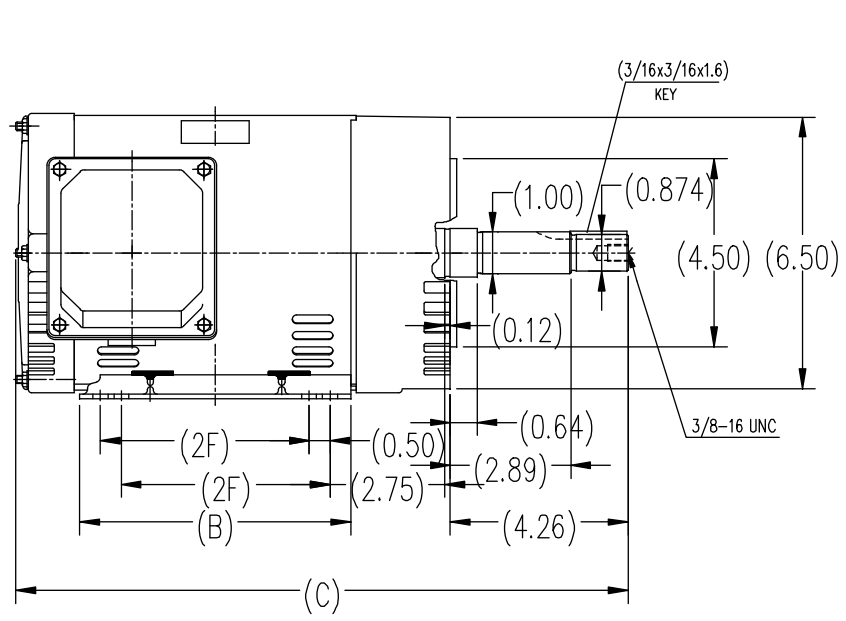
Nameplate Specifications

Output HP	1 Hp	Output KW	0.75 kW
Frequency	60 Hz	Voltage	208-230/460 V
Current	3.1-2.8/1.4 A	Speed	1748 rpm
Service Factor	1.15	Phase	3
Duty	Continuous	Insulation Class	F
Frame	143JM	Enclosure	Open Drip Proof
Thermal Protection	None	Ambient Temperature	40 °C
UL	Recognized	CSA	Y
CE	Y		

Technical Specifications

Electrical Type	POLYPHASE	Starting Method	Across The Line
Poles	4	Rotation	Reversible
Mounting	Rigid Base	Drive End Bearing	Ball
Opp Drive End Bearing	Ball	Frame Material	Rolled Steel
Shaft Type	Keyed	Overall Length	13.80 in
Frame Length	5.75 in	Shaft Diameter	1.000 in
Shaft Extension	4.26 in		

This is an uncontrolled document once printed or downloaded and is subject to change without notice. Date Created:30/10/2019



TYPE	2F	B	C
ODP 143JM	4.0	5.71	13.8
ODP 145JM	5.0	6.70	14.8

		TOLERANCES UNLESS SPECIFIED		REGAL REGAL-BELOIT CORPORATION		DRAWN WANG 7.26.2012
		DEC.	INCHES			CHK
		.X	±.1	TITLE		SCALE
		.XX	±.03	ODP 143/145JM		REF
		.XXX	±.005			FMF
		.XXXX	±.0005	MATERIAL		PREV
NO.	REVISION	BY & DATE	CHK	ANG	FINISH	
THIS DRAWING IN DESIGN AND DETAIL IS OUR PROPERTY AND MUST NOT BE USED EXCEPT IN CONNECTION WITH OUR WORK ALL RIGHTS OF DESIGN AND INVENTION ARE RESERVED THIS IS AN ELECTRONICALLY GENERATED DOCUMENT - DO NOT SCALE THIS PRINT			RFP	ANG	CAD FILE	SS620613
			DIST			SIZE B
						DRAWING NO. SS620613
						REV.



NO.		REVISION		BY & DATE		TOLERANCES UNLESS SPECIFIED		Regal Beloit America, Inc.	DRAWN RM 11/20/1990	
						DEC.	INCHES		CHK	ML
5	CHG TO REGAL LOGO	SL	09/10/2015	AB		DEC.	INCHES		CHK	ML 11/21/1990
4	REVISED IEC NOTATIONS	MSG	11/15/2011	CMN	.X		±.1		APPD	SAS 04/24/2003
3	ADDED IEC NOTATIONS... (U1), (V1) ETC. MU95194	MSG	5/10/2010	MJS	.XX		±.02	TITLE CONNECTION DIAGRAM		SCALE 1=1
2	ADDED THE OPTIONAL CORD CONNECTION MU46318	RDH	04/24/2003	DRS	.XXX		±.005	3Ø - DUAL VOLTAGE MOTOR		REF
1	REDRAWN	RM	11/20/1990		.XXXX		±.0005	MAT'L.		FMF
						CHK	ANG	±7'30"	FINISH	PREV
THIS DRAWING IN DESIGN AND DETAIL IS OUR PROPERTY AND MUST NOT BE USED EXCEPT IN CONNECTION WITH OUR WORK ALL RIGHTS OF DESIGN AND INVENTION ARE RESERVED THIS IS AN ELECTRONICALLY GENERATED DOCUMENT - DO NOT SCALE THIS PRINT						RFP	CAD FILE ee7308		SIZE	DRAWING NO. PAGE OF REV.
						DIST	WP		A	EE7308 5