

PRODUCT INFORMATION PACKET



Model No: C870
Catalog No: C870
1.0 HP General Purpose Motor, 1 phase, 3600 RPM, 115/230 V, 56 Frame, TEFC
Single Phase TEFC Motors



Regal and Century are trademarks of Regal Beloit Corporation or one of its affiliated companies.
©2019 Regal Beloit Corporation, All Rights Reserved. MC017097E

The REGAL logo is a grey rectangular box with the word 'REGAL' in white, bold, uppercase letters. It is positioned on a blue vertical bar with a halftone pattern that runs down the right side of the page.

REGAL



Nameplate Specifications

Output HP	1.0 Hp	Output KW	0.75 kW
Frequency	60 Hz	Voltage	115/230 V
Current	12.0/6.0 A	Speed	3450 rpm
Service Factor	1	Phase	1
Duty	Continuous	Insulation Class	B
Frame	56	Enclosure	Totally Enclosed Fan Cooled
Thermal Protection	Automatic	Ambient Temperature	40 °C
UL	Recognized	CSA	Y
CE	N		

Technical Specifications

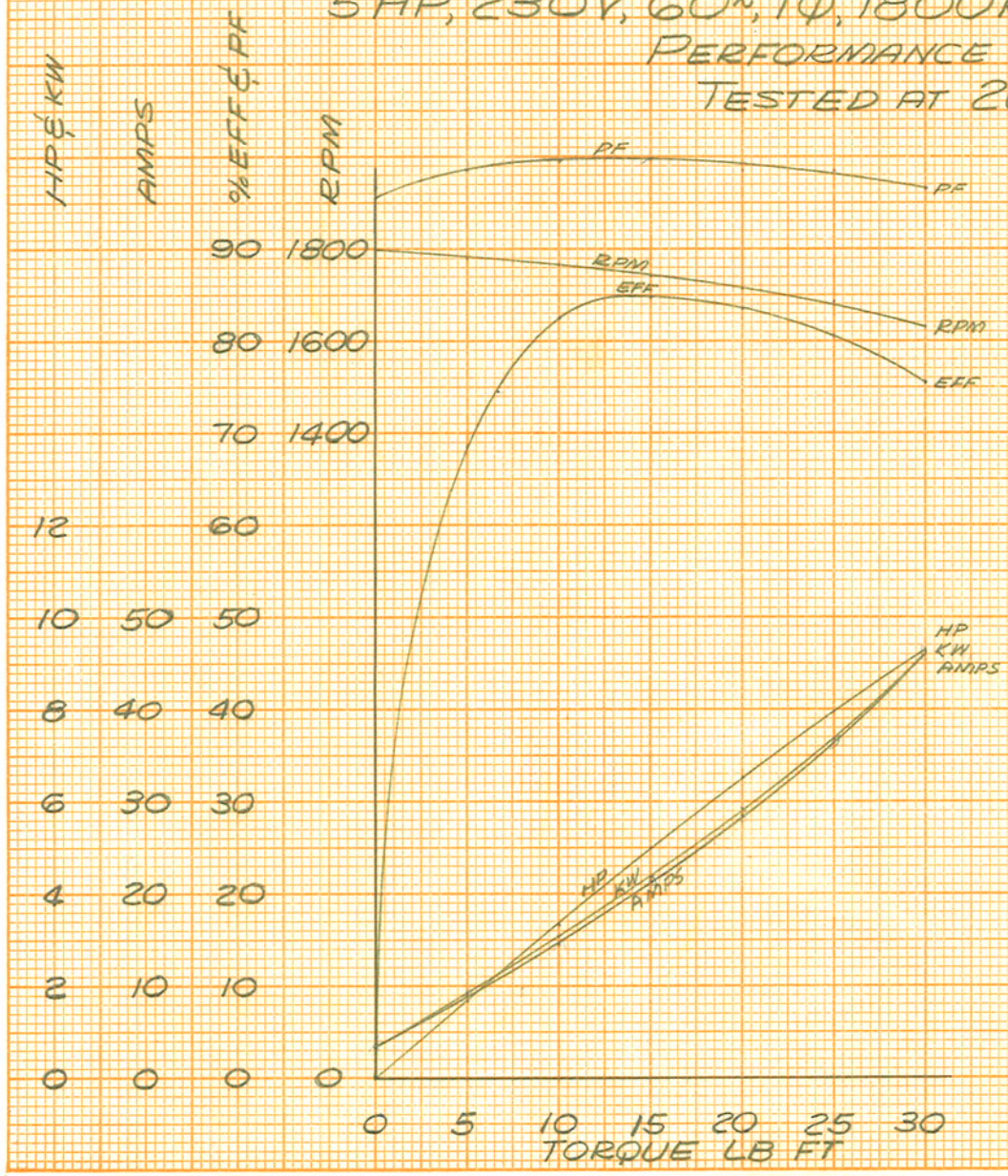
Electrical Type	Capacitor Start, Induction Run, Single Or Dual Voltage	Starting Method	Across The Line
Poles	2	Rotation	Reversible
Mounting	Resilient Base	Drive End Bearing	Ball
Opp Drive End Bearing	Ball	Frame Material	Rolled Steel
Shaft Type	Keyed	Overall Length	12.59 in
Frame Length	5.50 in	Shaft Diameter	0.625 in
Shaft Extension	1.94 in		

This is an uncontrolled document once printed or downloaded and is subject to change without notice. Date Created:30/10/2019

C-870

EX 1827-1

A. O. SMITH CORP
ELECTRIC MOTOR DIVISION
5HP, 230V, 60ⁿ, 1 ϕ , 1800RPM, HERMETIC MOTOR
PERFORMANCE CURVES
TESTED AT 207V



St T = 26 LB FT
BDT = 33 LB FT
St A = 110 AMPS
St CAP = 220 MFD
Run CAP = 72 MFD

5-13-58 W.G.J.

C-870