

PRODUCT INFORMATION PACKET



Model No: C783
Catalog No: C783
1.0 HP Direct Drive Fan Motor, 1 phase, 900 RPM, 230 V, 56CZ Frame, TEAO
Direct Drive Fan Motors



Regal and Century are trademarks of Regal Beloit Corporation or one of its affiliated companies.
©2019 Regal Beloit Corporation, All Rights Reserved. MC017097E

REGAL



Nameplate Specifications

Output HP	1.0 Hp	Output KW	0.75 kW
Frequency	60 Hz	Voltage	230 V
Current	5.1/5.1 A	Speed	850/725 rpm
Service Factor	1	Phase	1
Duty	Continuous	Insulation Class	B
Frame	P56CZ	Enclosure	Totally Enclosed Air Over
Thermal Protection	Thermally Protected	Ambient Temperature	40 °C
UL	Recognized	CSA	Y
CE	N		

Technical Specifications

Electrical Type	Permanent Split Capacitor, Single Or Dual Voltage	Starting Method	Across The Line
Poles	8	Rotation	Counterclockwise
Mounting	Round	Drive End Bearing	Ball
Opp Drive End Bearing	Ball	Frame Material	Rolled Steel
Shaft Type	Keyed	Overall Length	14.22 in
Frame Length	8.00 in	Shaft Diameter	0.625 in
Shaft Extension	3.25 in		

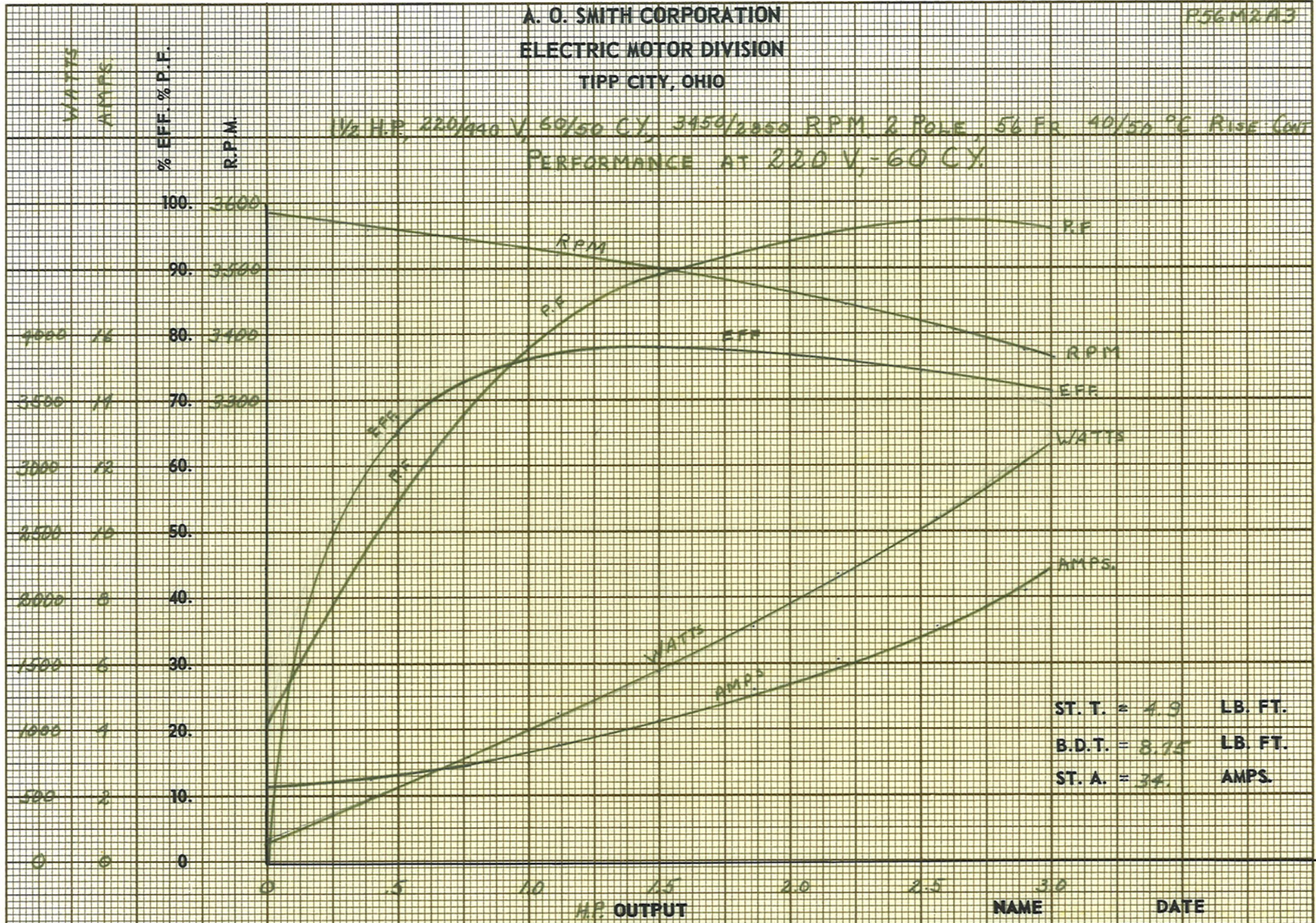
This is an uncontrolled document once printed or downloaded and is subject to change without notice. Date Created:04/11/2019

C-783

A. O. SMITH CORPORATION
ELECTRIC MOTOR DIVISION
TIPP CITY, OHIO

P56M2A3

1/2 H.P., 220/440 V, 60/50 CY, 3450/2850 RPM, 2 POLE, 56 FR, 40/50 °C RISE CONT
PERFORMANCE AT 220 V, -60 CY.



ST. T. = 4.9 LB. FT.
B.D.T. = 8.75 LB. FT.
ST. A. = 34. AMPS.

C-783