

PRODUCT INFORMATION PACKET



Model No: C777

Catalog No: C777

1.5 HP Pressure Washers Motor, 1 phase, 1800 RPM, 115/230 V, 56C Frame, TEFC
Pressure Washer Motors



Regal and Century are trademarks of Regal Beloit Corporation or one of its affiliated companies.

©2019 Regal Beloit Corporation, All Rights Reserved. MC017097E

REGAL



Nameplate Specifications

Output HP	1.5 Hp	Output KW	1.1 kW
Frequency	60 Hz	Voltage	115/230 V
Current	15.0/7.5 A	Speed	1725 rpm
Service Factor	1.2	Phase	1
Duty	Continuous	Insulation Class	B
Frame	X56C	Enclosure	Totally Enclosed Fan Cooled
Thermal Protection	Thermally Protected	Ambient Temperature	40 °C
UL	Recognized	CSA	Y
CE	N		

Technical Specifications

Electrical Type	Capacitor Start, Capacitor Run, Single Or Dual Voltage	Starting Method	Across The Line
Poles	4	Rotation	Reversible Counterclockwise
Mounting	Rigid Base	Drive End Bearing	Ball
Opp Drive End Bearing	Ball	Frame Material	Rolled Steel
Shaft Type	Keyed	Overall Length	13.71 in
Frame Length	7.50 in	Shaft Diameter	0.625 in
Shaft Extension	2.07 in		

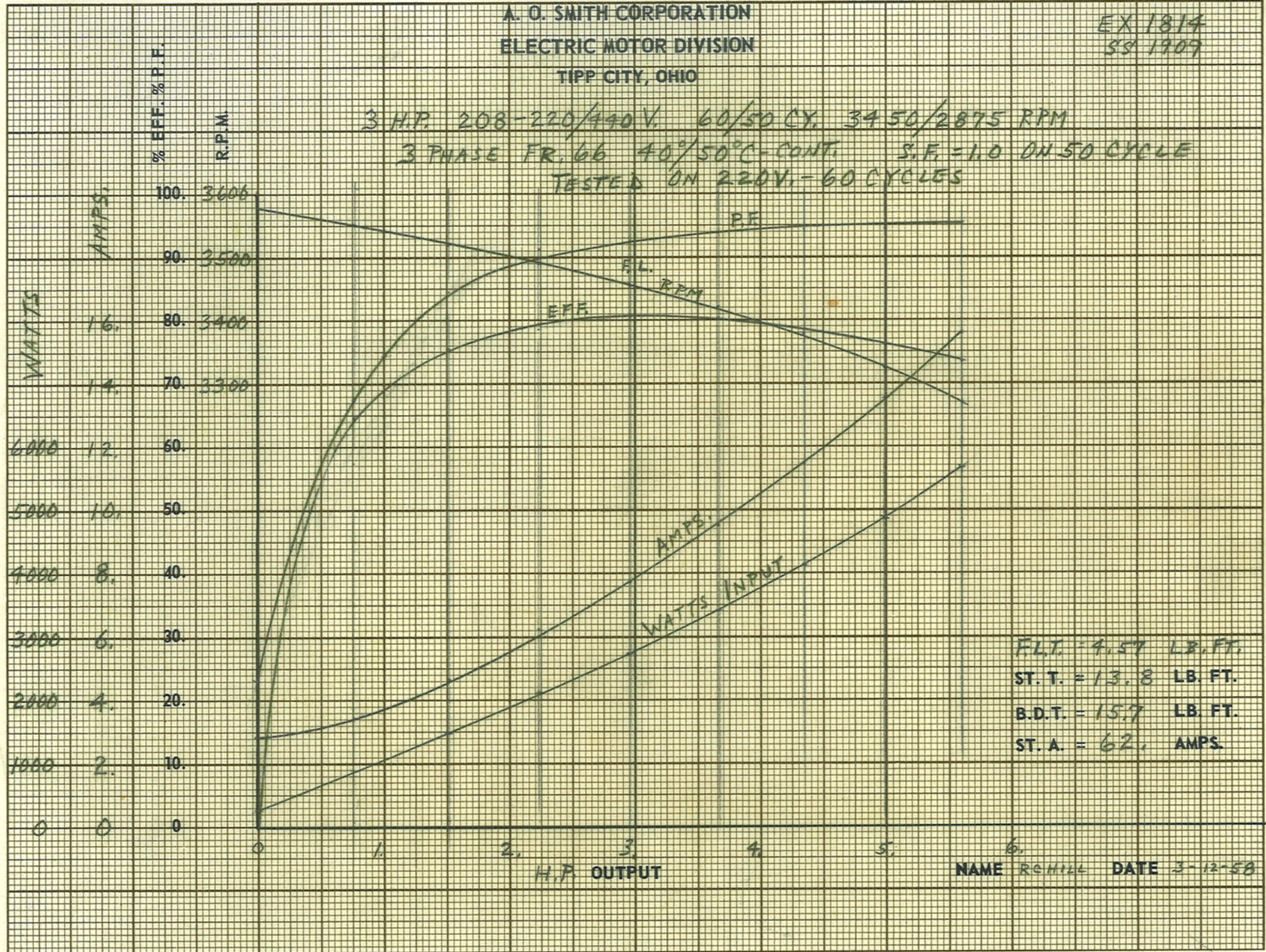
This is an uncontrolled document once printed or downloaded and is subject to change without notice. Date Created:04/11/2019

C777

A. O. SMITH CORPORATION
ELECTRIC MOTOR DIVISION
TIPP CITY, OHIO

EX 1814
SS 1909

3 H.P. 208-220/440 V. 60/50 CY. 3450/2875 RPM
3 PHASE FR. 66 40°/50°C-CONT. S.F. = 1.0 ON 50 CYCLE
TESTED ON 220V. - 60 CYCLES



F.L.T. = 4.57 LB. FT.
ST. T. = 13.8 LB. FT.
B.D.T. = 15.7 LB. FT.
ST. A. = 62. AMPS.

NAME RCH:LL DATE 3-12-58