

PRODUCT INFORMATION PACKET



Model No: C645
Catalog No: C645
1/2 HP General Purpose Motor, 1 phase, 1800 RPM, 115/230 V, 56 Frame, ODP
Single Phase ODP Motors



Regal and Century are trademarks of Regal Beloit Corporation or one of its affiliated companies.
©2019 Regal Beloit Corporation, All Rights Reserved. MC017097E

The REGAL logo consists of the word 'REGAL' in a bold, white, sans-serif font, set against a dark grey rectangular background with a slight shadow effect.

REGAL



Nameplate Specifications

Output HP	1/2 Hp	Output KW	0.37 kW
Frequency	60 Hz	Voltage	115/230 V
Current	8.2/4.1 A	Speed	1725 rpm
Service Factor	1	Phase	1
Duty	Continuous	Insulation Class	A
Frame	J56	Enclosure	Drip Proof
Thermal Protection	None	Ambient Temperature	40 °C
UL	Recognized	CSA	Y
CE	N		

Technical Specifications

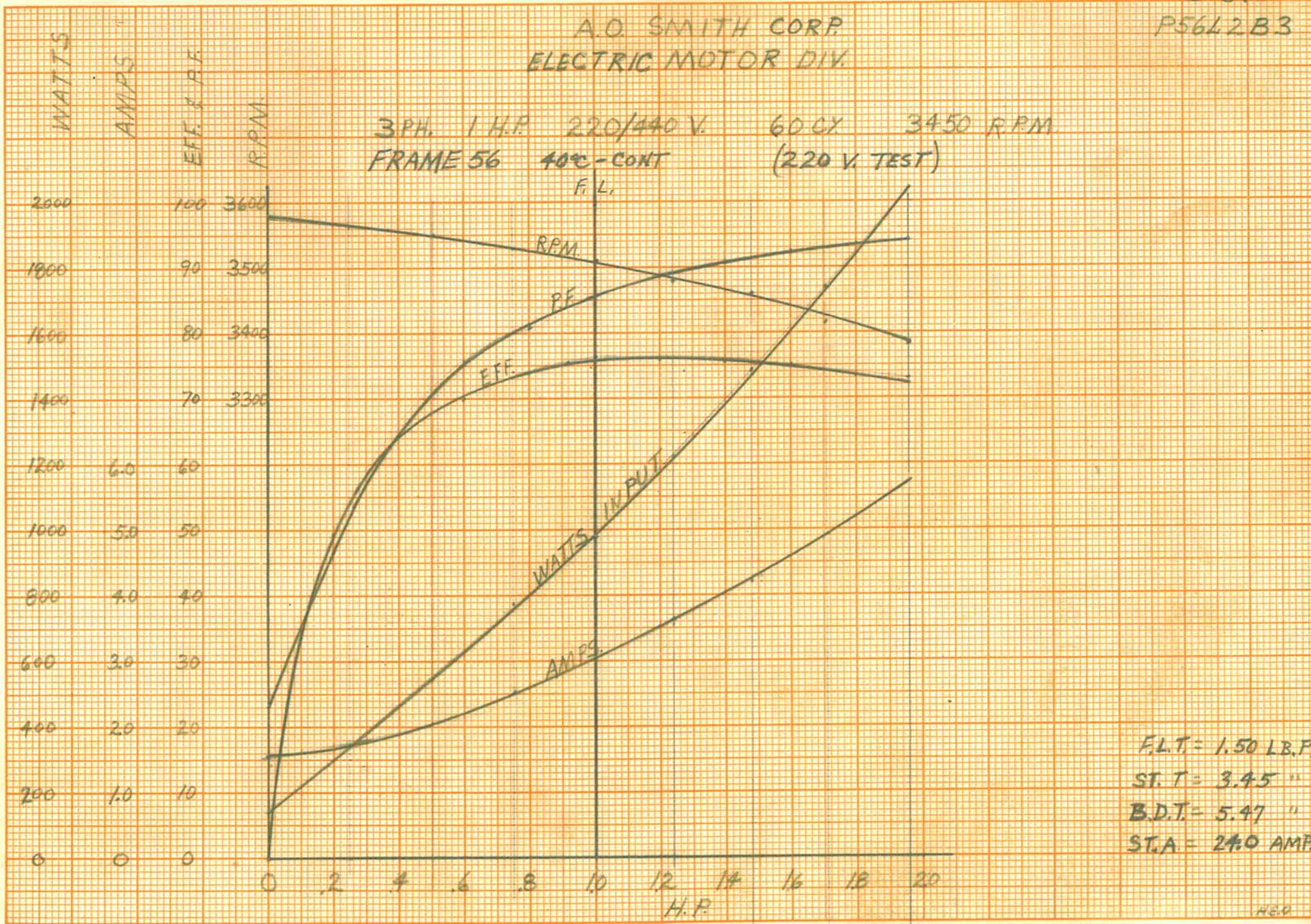
Electrical Type	Capacitor Start , Special Service	Starting Method	Across The Line
Poles	4	Rotation	Reversible Counterclockwise
Mounting	Rigid Base	Drive End Bearing	Sleeve
Opp Drive End Bearing	Sleeve	Frame Material	Rolled Steel
Shaft Type	Keyed	Overall Length	11.13 in
Frame Length	5.13 in	Shaft Diameter	0.625 in
Shaft Extension	1.97 in		

This is an uncontrolled document once printed or downloaded and is subject to change without notice. Date Created:04/11/2019

C 645
P56L2B3

A.O. SMITH CORP.
ELECTRIC MOTOR DIV.

3 PH. 1 H.P. 220/440 V. 60 CY 3450 R.P.M.
FRAME 56 40°C-CONT (220 V. TEST)
F.L.



F.L.T. = 1.50 LB.FT.
ST. T = 3.45 "
B.D.T. = 5.47 "
S.T.A. = 24.0 AMPS.

C 645