

PRODUCT INFORMATION PACKET



Model No: C621

Catalog No: C621

1.5 HP Fan and Blower HVAC/R Motor, 1 phase, 1800 RPM, 208-230/115 V, 56 Frame, ODP
Self Cooled Motors



Regal and Century are trademarks of Regal Beloit Corporation or one of its affiliated companies.

©2019 Regal Beloit Corporation, All Rights Reserved. MC017097E

The REGAL logo consists of the word 'REGAL' in a bold, white, sans-serif font, set against a dark grey rectangular background with a slight shadow effect.

REGAL



Nameplate Specifications

Output HP	1.5 Hp	Output KW	1.1 kW
Frequency	60 Hz	Voltage	208-230/115 V
Current	7.8-7.5/15.0 A	Speed	1725 rpm
Service Factor	1.2	Phase	1
Duty	Continuous	Insulation Class	B
Frame	M56	Enclosure	Drip Proof
Thermal Protection	Thermally Protected	Ambient Temperature	40 °C
UL	Recognized	CSA	Y
CE	N		

Technical Specifications

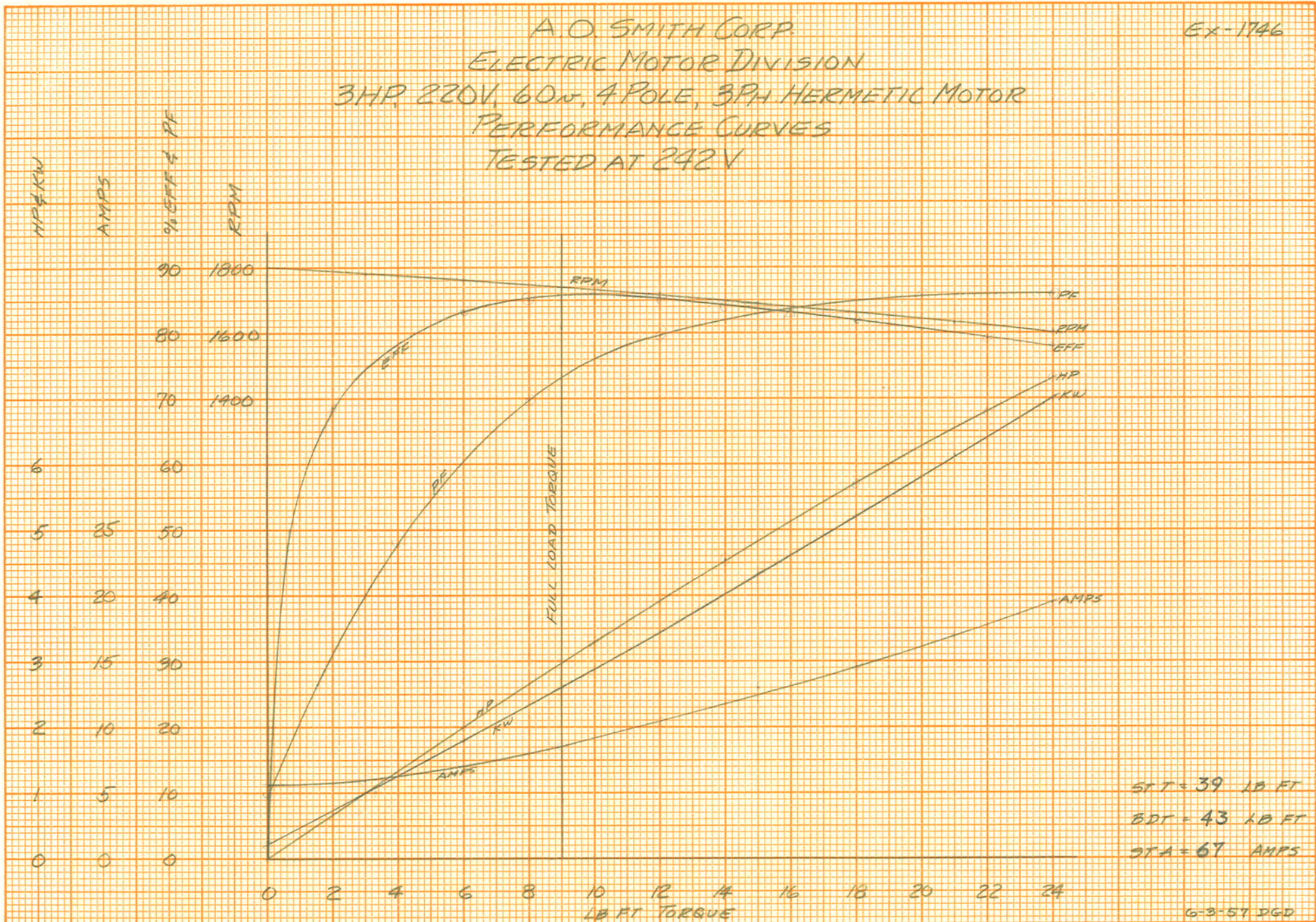
Electrical Type	Capacitor Start, Capacitor Run, Single Or Dual Voltage	Starting Method	Across The Line
Poles	4	Rotation	Reversible Counterclockwise
Mounting	Cushion Base	Drive End Bearing	Ball
Opp Drive End Bearing	Ball	Frame Material	Rolled Steel
Shaft Type	Keyed	Overall Length	12.69 in
Frame Length	6.75 in	Shaft Diameter	0.625 in
Shaft Extension	1.94 in		

This is an uncontrolled document once printed or downloaded and is subject to change without notice. Date Created:04/11/2019

C-621

EX-1746

A. O. SMITH CORP.
 ELECTRIC MOTOR DIVISION
 3HP, 220V, 60Hz, 4 POLE, 3PH HERMETIC MOTOR
 PERFORMANCE CURVES
 TESTED AT 242V



C-621