

PRODUCT INFORMATION PACKET



Model No: C580
Catalog No: C580
1/2 HP Belt Drive Fan Motor, 1 phase, 1800 RPM, 230/115 V, 56 Frame, TEAO
Belt Drive Fan Motors



Regal and Century are trademarks of Regal Beloit Corporation or one of its affiliated companies.
©2019 Regal Beloit Corporation, All Rights Reserved. MC017097E

The REGAL logo consists of the word 'REGAL' in a bold, white, sans-serif font, set within a dark grey, trapezoidal shape that tapers to the right. This logo is positioned on a blue background with a white halftone dot pattern that runs diagonally across the right side of the page.

REGAL



Nameplate Specifications

Output HP	1/2 Hp	Output KW	0.37 kW
Frequency	60 Hz	Voltage	230/115 V
Current	3.2/6.4 A	Speed	1725 rpm
Service Factor	1	Phase	1
Duty	Continuous	Insulation Class	B
Frame	K56	Enclosure	Totally Enclosed Air Over
Thermal Protection	Thermally Protected	Ambient Temperature	40 °C
UL	Recognized	CSA	Y
CE	N		

Technical Specifications

Electrical Type	Capacitor Start, Capacitor Run, Low Starting Torque, Single Or Dual Voltage	Starting Method	Across The Line
Poles	4	Rotation	Reversible Counterclockwise
Mounting	Rigid Base	Drive End Bearing	Ball
Opp Drive End Bearing	Ball	Frame Material	Rolled Steel
Shaft Type	Keyed	Overall Length	11.44 in
Frame Length	5.50 in	Shaft Diameter	0.625 in
Shaft Extension	1.94 in		

This is an uncontrolled document once printed or downloaded and is subject to change without notice. Date Created:04/11/2019

GRP.	TYPE	FRAME	C	BS	XX	XH	XG	XS	XT	XO	XP
161254-01	CPX	K56	11.44[290.6]	5.38[136.7]	.75[19.1]	4.64[117.9]	2.93[74.4]	3.21[81.5]	4.08[103.6]	3.30[83.8]	4.38[111.3]
161254-02	CPX	G56	11.94[303.3]	5.88[149.4]	.75[19.1]	5.28[134.1]	2.04[51.8]	3.21[81.5]	4.08[103.6]	3.30[83.8]	4.38[111.3]
161254-03	CPX	T56	12.44[316.0]	6.38[162.1]	.75[19.1]	4.64[117.9]	3.68[93.5]	3.21[81.5]	4.08[103.6]	3.30[83.8]	4.38[111.2]
161254-04	CPX	K56	11.44[290.6]	5.38[136.7]	.75[19.1]	4.64[117.9]	3.57[90.7]	2.96[75.2]	4.08[103.6]	3.18[80.8]	4.23[107.4]
161254-05	CPX	T56	12.44[316.0]	6.38[162.1]	---	4.64[117.9]	3.68[93.5]	3.21[81.5]	4.08[103.6]	3.30[83.8]	4.38[111.2]

REV	ECO	REV BY	DATE	APPO	DATE
G	ECO-0017811	A. DE LUNA	12-03-2010	S. JIMENEZ	12-03-2010

D

D

C

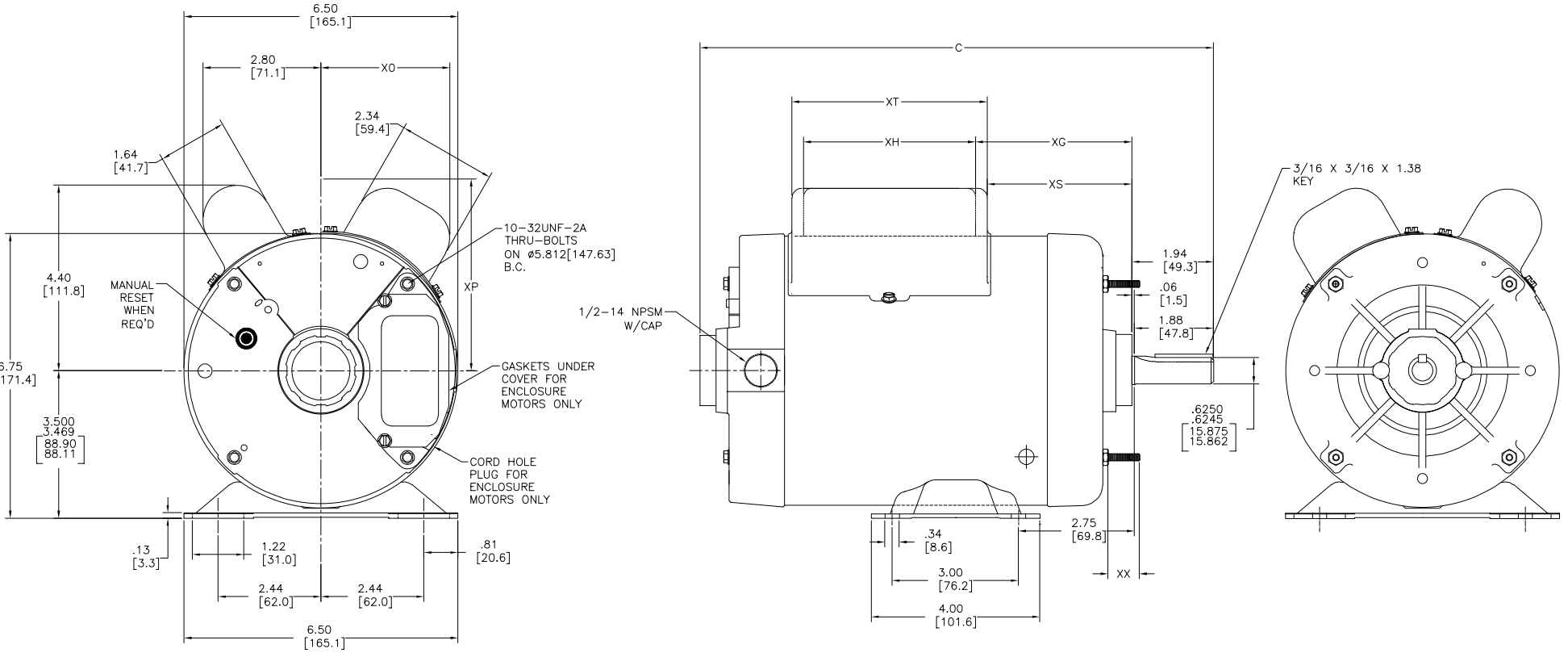
C

B

B

A

A



GEOMETRIC CHARACTERISTICS & SYMBOLS □ FLATNESS — STRAIGHTNESS ∠ ANGULARITY ⊥ PERPENDICULARITY (SQUARENESS) ∥ PARALLELISM ○ ROUNDNESS (CIRCULARITY) ⌀ CIRCULARITY △ PROFILE OF ANY SURFACE ~ PROFILE OF ANY LINE ⤴ ROUNDTOP ★ TRUE POSITION ⊙ CONCENTRICITY ≡ SYMMETRY	UNLESS OTHERWISE SPECIFIED DIM. TOLERANCES ARE AS FOLLOWS: INCH ±.1 ±.02 ±.005 ±.0005 mm .005 .013 .015 .015 ANG. ±.50 DEG REMOVE BURRS & BREAK SHARP EDGES: INCH .003-.015 mm 0.1-0.4 CORNER FILLETS TO: INCH .020 mm 0.5 MACHINE SURFACES: INCH 125 mm 32 METRIC DIMS. SHOWN IN [BRACKETS]	DR BY: MH	2-26-81	Electrical Products Company A DIVISION OF A.C. SMITH CORPORATION
		APPD:	EDS DATE 02-22-2008	
THIRD ANGLE PROJECTION		FORMAT REV F	OUTLINE	CONFIDENTIAL: THIS DRAWING AND ITS INFORMATION ARE THE EXCLUSIVE AND CONFIDENTIAL PROPERTY OF A.C. SMITH CORP. AND ARE NOT TO BE DISCLOSED, DUPLICATED, DISTRIBUTED OR OTHERWISE USED WITHOUT THE WRITTEN CONSENT OF A.C. SMITH CORP. -ALL RIGHTS RESERVED. ASME Y14.5M 1994
		SIZE D	DWG NO 161254	SCALE NONE SHEET 1

GRUPO	TIPO	CARCAZA	C	BS	XX	XH	XG	XS	XT	XO	XP
161254-01	CPX	K56	11.44[290.6]	5.38[136.7]	.75[19.1]	4.64[117.9]	2.93[74.4]	3.21[81.5]	4.08[103.6]	3.30[83.8]	4.38[111.3]
161254-02	CPX	G56	11.94[303.3]	5.88[149.4]	.75[19.1]	5.28[134.1]	2.04[51.8]	3.21[81.5]	4.08[103.6]	3.30[83.8]	4.38[111.3]
161254-03	CPX	T56	12.44[316.0]	6.38[162.1]	.75[19.1]	4.64[117.9]	3.68[93.5]	3.21[81.5]	4.08[103.6]	3.30[83.8]	4.38[111.2]
161254-04	CPX	K56	11.44[290.6]	5.38[136.7]	.75[19.1]	4.64[117.9]	3.57[90.7]	2.96[75.2]	4.08[103.6]	3.18[80.8]	4.23[107.4]
161254-05	CPX	T56	12.44[316.0]	6.38[162.1]	---	4.64[117.9]	3.68[93.5]	3.21[81.5]	4.08[103.6]	3.30[83.8]	4.38[111.2]

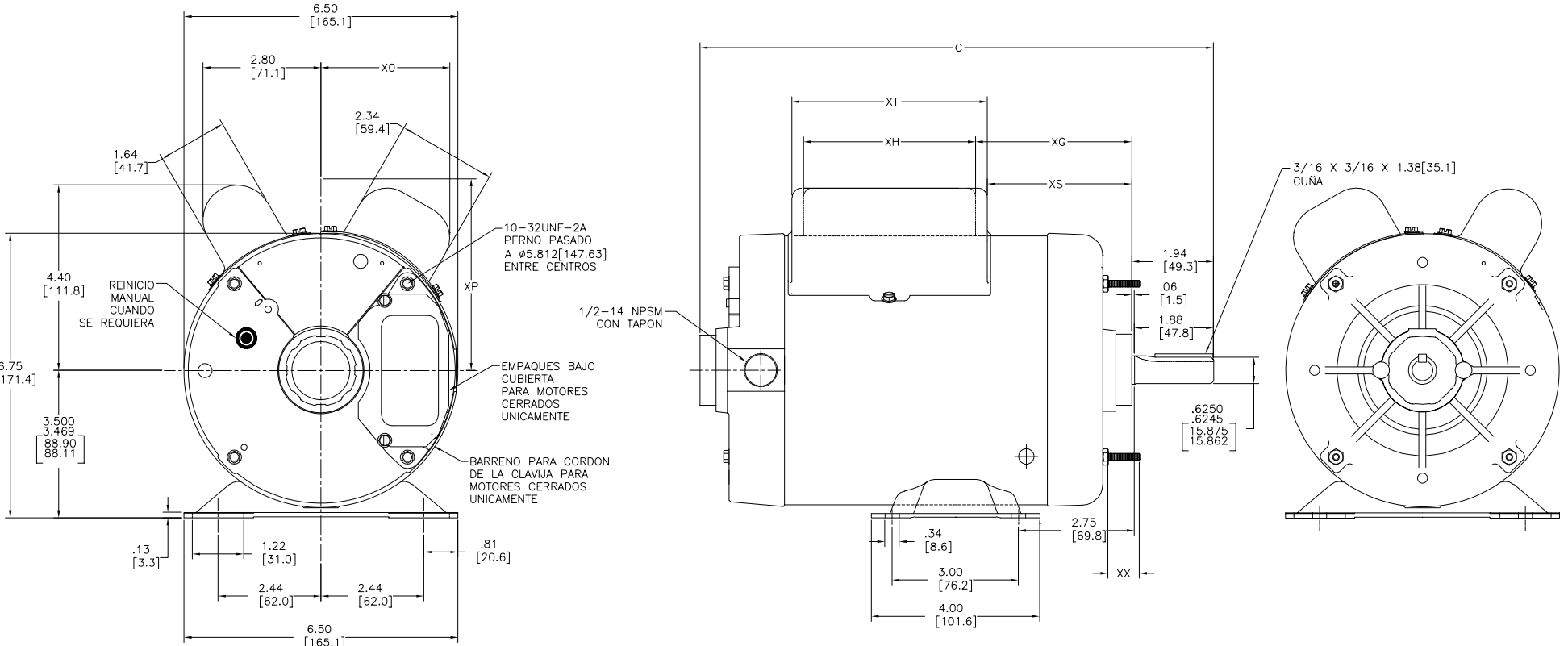
REVISION:	ECO	REVISADO POR:	FECHA:	APROBADO POR:	FECHA:
G	ECO-0017811	A. DE LUNA	12-03-2010	S. JIMENEZ	12-03-2010

D

C

B

A

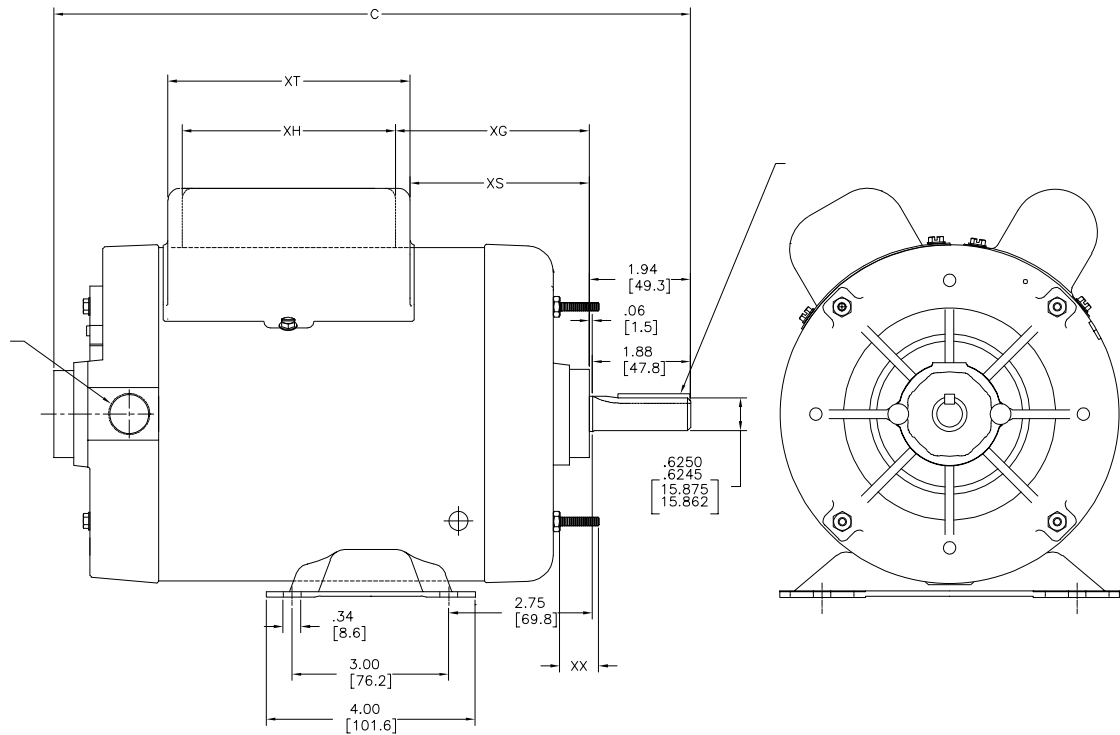
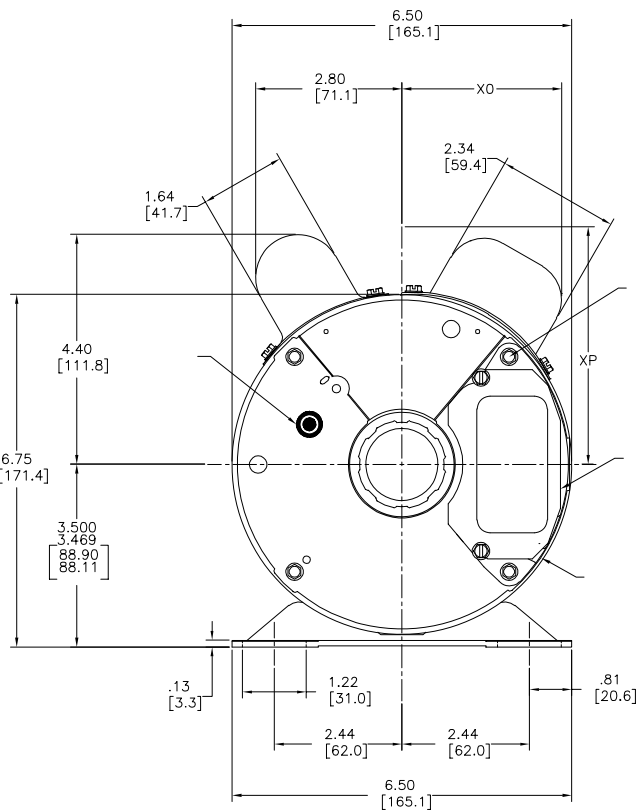


CARACTERÍSTICAS DE GEOMETRÍA Y SIMBOLOS □ PLANICIDAD — RECTILÍNEO ∠ ANGULARIDAD ⊥ PERPENDICULARIDAD (A ESCUADRA) // PARALELISMO R REDONDEZ (CIRCULARIDAD) φ CILINDRICIDAD △ PERFIL DE CUALQUIER SUPERFICIE ~ PERFIL DE CUALQUIER LINEA ↗ VARIACION ● POSICION REAL ⊙ CONCENTRICIDAD ≡ SIMETRÍA	A MENOS QUE SE ESPECIFIQUE DE OTRA MANERA, LAS TOLERANCIAS DE LAS DIMS. SON LAS SIGUIENTES: PULG ±.1 ±.02 ±.005 ±.0005 mm ±0.5 ±0.13 ±0.013 ANG. ±.50 GRADOS ELIMINAR REBASAS Y ORILLAS FILOSAS DEL BORDE. PULG .003-.015 mm 0.1-0.4 FILETEAR ESQUINA: PULG .020 mm 0.5 MAQUINAR SUPERFICIES PULG 1/32 mm 3/32 DIMS METRICAS MOSTRADAS (PARENTESIS)	DIBUJADO POR: MH APROBADO POR:	2-26-81	AC Smith ELECTRICAL PRODUCTS COMPANY A DIVISION OF A.O. SMITH CORPORATION	
		TERCER ANGULO DE PROYECCION:	FECHA EDS: 02-22-2008 REV. FORMATO: F		DESCRIPCION: OUTLINE
CONFIDENCIAL: ESTE DIBUJO Y SU INFORMACION SON PROPIEDAD DE USO EXCLUSIVO Y CONFIDENCIAL DE A.O. SMITH CORP. Y NO DEBERAN SER REVELADOS, DUPLICADOS, DISTRIBUIDOS O USARSE DE OTRA MANERA SIN EL CONSENTIMIENTO ESCRITO DE A.O. SMITH CORP. -TODOS LOS DERECHOS RESERVADOS.ASME Y14.5M 1994		TAMANO: D	NUMERO DE DIBUJO: 161254	ESCALA: NONE	HOJA: 1

Uncontrolled Copy

	8		7		6		5		4		3	
			C	BS	XX	XH	XG	XS	XT	XO	XP	
161254-01	CPX	K56	11.44[290.6]	5.38[136.7]	.75[19.1]	4.64[117.9]	2.93[74.4]	3.21[81.5]	4.08[103.6]	3.30[83.8]	4.38[111.3]	
161254-02	CPX	G56	11.94[303.3]	5.88[149.4]	.75[19.1]	5.28[134.1]	2.04[51.8]	3.21[81.5]	4.08[103.6]	3.30[83.8]	4.38[111.3]	
161254-03	CPX	T56	12.44[316.0]	6.38[162.1]	.75[19.1]	4.64[117.9]	3.68[93.5]	3.21[81.5]	4.08[103.6]	3.30[83.8]	4.38[111.2]	
161254-04	CPX	K56	11.44[290.6]	5.38[136.7]	.75[19.1]	4.64[117.9]	3.57[90.7]	2.96[75.2]	4.08[103.6]	3.18[80.8]	4.23[107.4]	
161254-05	CPX	T56	12.44[316.0]	6.38[162.1]	---	4.64[117.9]	3.68[93.5]	3.21[81.5]	4.08[103.6]	3.30[83.8]	4.38[111.2]	

版本:	ECO	编制:	日期:	批准:	日期:
C	ECO-0017811	A. DE LUNA	12-03-2010	S. JIMENEZ	12-03-2010



形位公差	符号	说明
□	平面度	
∠	垂直度	
⊥	平行度	
∥	同轴度	
○	圆度	
⊙	圆柱度	
⊙	圆锥度	
⊙	位置度	
⊙	跳动度	
⊙	可移度	

形位公差	符号	说明
□	平面度	
∠	垂直度	
⊥	平行度	
∥	同轴度	
○	圆度	
⊙	圆柱度	
⊙	圆锥度	
⊙	位置度	
⊙	跳动度	
⊙	可移度	

形位公差	符号	说明
□	平面度	
∠	垂直度	
⊥	平行度	
∥	同轴度	
○	圆度	
⊙	圆柱度	
⊙	圆锥度	
⊙	位置度	
⊙	跳动度	
⊙	可移度	

形位公差	符号	说明
□	平面度	
∠	垂直度	
⊥	平行度	
∥	同轴度	
○	圆度	
⊙	圆柱度	
⊙	圆锥度	
⊙	位置度	
⊙	跳动度	
⊙	可移度	