

PRODUCT INFORMATION PACKET



Model No: C538

Catalog No: C538

1.0-1/3 HP 2 speed Fan and Blower HVAC/R Motor, 1 phase, 1800/1200 RPM, 115 V, 56 Frame, ODP
Belt Drive Motors



Regal and Century are trademarks of Regal Beloit Corporation or one of its affiliated companies.

©2019 Regal Beloit Corporation, All Rights Reserved. MC017097E

REGAL



Nameplate Specifications

Output HP	1.0-1/3 Hp	Output KW	0.75 kW
Frequency	60 Hz	Voltage	115 V
Current	12.4-7.8 A	Speed	1725/1140 rpm
Service Factor	1.15	Phase	1
Duty	Continuous	Insulation Class	B
Frame	M56	Enclosure	Drip Proof
Thermal Protection	Automatic	Ambient Temperature	40 °C
UL	Recognized	CSA	Y
CE	N		

Technical Specifications

Electrical Type	Capacitor Start, Induction Run, Special Service, Multi-Speed	Starting Method	Across The Line
Poles	4/6	Rotation	Reversible Counterclockwise
Mounting	Cushion Base	Drive End Bearing	Ball
Opp Drive End Bearing	Ball	Frame Material	Rolled Steel
Shaft Type	Keyed	Overall Length	12.69 in
Frame Length	6.75 in	Shaft Diameter	0.625 in
Shaft Extension	1.94 in		

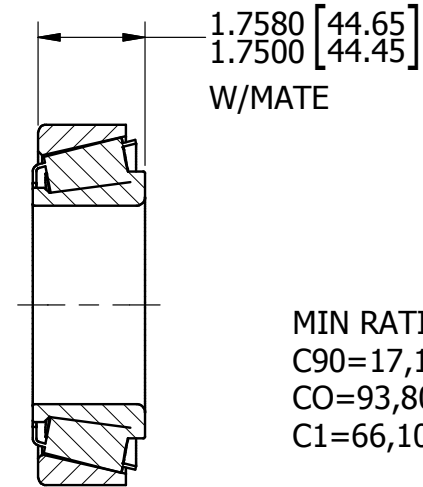
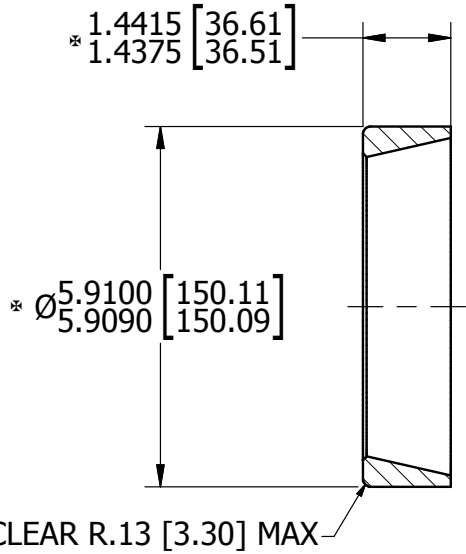
This is an uncontrolled document once printed or downloaded and is subject to change without notice. Date Created:04/11/2019

4

3

2

1



MIN RATING WITH MATE:
 C90=17,100 LBF [76,060 N]
 CO=93,800 LBF [417,240 N]
 C1=66,100 LBF [294,020 N]

K FACTOR=1.80 (REF)

VENDOR: TIMKEN
 THEIR P/N 742

DIMENSIONS GIVEN IN INCHES
 [MILLIMETERS]
 * DENOTES CRITICAL TO QUALITY (CTQ)

MATERIAL:
 CASE CARB/BEARING
 QUALITY STEEL

AMWF SEQUENCE NO.

SHEET 1 OF 1

					ALL DIMENSIONS IN INCHES UNLESS OTHERWISE SPECIFIED: CASTINGS ALLOW 0.12 FINISH STOCK ON MACHINED SURFACES. FILLETS AND RADII: 0.12 MAX. MACHINING TOLERANCES .X ± 0.030 FRAC. ± 1/64 .XX ± 0.010 ANGLE ± 30° .XXX ± 0.005 125/ FINISH MODEL WHERE USED N/A		THIS PRINT IS CONFIDENTIAL AND IS THE PROPERTY OF DURST, DIV. OF REGAL BELOIT CORP. THIS PRINT SHALL NOT BE USED, COPIED OR REPRODUCED IN WHOLE OR IN PART, NOR SHALL THE CONTENTS BE REVEALED IN ANY MANNER TO ANYONE. UNLESS WRITTEN PERMISSION IS OBTAINED FROM DURST, DIV. REGAL BELOIT CORP.		DURST DIVISION OF REGAL-BELOIT CORP. P.O. BOX 298 BELOIT, WISCONSIN 53511	
MATERIAL			SEE NOTE		TITLE					
					BEARING CUP					
SCALE			1/2:1		THIRD ANGLE PROJECT		PART NO.			
DRAWN BY			WEM		DATE		8/31/10			
REV.			1		W.O. NO.		30277			
DESCRIPTION			RELEASED		BY		WEM			
					DATE		8/31/10			
REF.					ZONE					

4

3

2

1