

PRODUCT INFORMATION PACKET



Model No: C333V1
Catalog No: C333V1
1.0 HP Auger Drive Motor, 1 phase, 1800 RPM, 115/230 V, 56N Frame, TEFC
Auger Drive Motors



Regal and Century are trademarks of Regal Beloit Corporation or one of its affiliated companies.
©2019 Regal Beloit Corporation, All Rights Reserved. MC017097E

REGAL



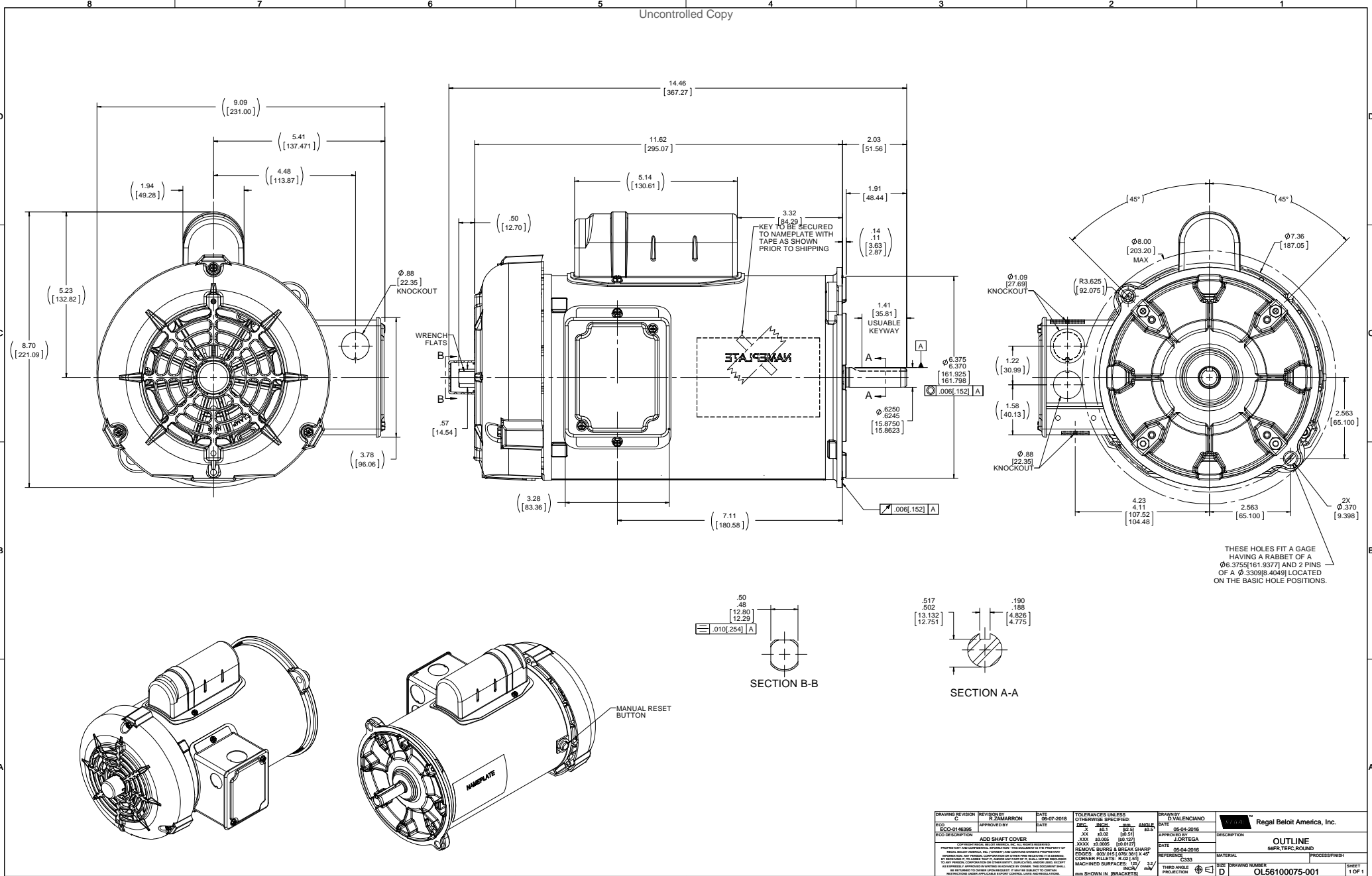
Nameplate Specifications

Output HP	1.0 Hp	Output KW	0.75 kW
Frequency	60 Hz	Voltage	115/230 V
Current	11.6/5.8 A	Speed	1725 rpm
Service Factor	1	Phase	1
Duty	Continuous	Insulation Class	B
Frame	56N	Enclosure	Totally Enclosed Fan Cooled
Thermal Protection	Thermally Protected	Ambient Temperature	40 °C
UL	Recognized	CSA	Y
CE	Y		

Technical Specifications

Electrical Type	Capacitor Start Induction Run	Starting Method	Across The Line
Poles	4	Rotation	Selective Counterclockwise
Mounting	Round	Drive End Bearing	Ball
Opp Drive End Bearing	Ball	Frame Material	Rolled Steel
Shaft Type	NEMA 56	Overall Length	14.46 in
Frame Length	8.65 in	Shaft Diameter	0.625 in
Shaft Extension	2.03 in		

This is an uncontrolled document once printed or downloaded and is subject to change without notice. Date Created:30/10/2019



DRAWING REVISION C	REVISION BY R. ZAMARRON	DATE 06-07-2018	TOLERANCES UNLESS OTHERWISE SPECIFIED: FRACTIONS DECIMALS ANGLES X .001 .005 16.0	DRAWN BY D. VALENCIANO	Regal Beloit America, Inc.
ECO-0146396	APPROVED BY	DATE	ISO 9000 01.0005 (01.0127)	DATE 06-04-2016	OUTLINE
ADD SHAFI COVER			REMOVE BURRS & BREAK SHARP EDGES .002(0.051) MIN 3/32 CORNER FILLETS R.01(0.25)	REFERENCE C333	DESCRIPTION MTR.FEPC.ROUND
MATERIAL MATERIAL			FINISH FINISH	THIRD ANGLE PROJECTION	PROCESS/FINISH
DRAWING NUMBER OL56100075-001			SHEET 1 OF 1		