

PRODUCT INFORMATION PACKET



Model No: C235ES
Catalog No: C235ES
1/3 HP General Purpose Motor, 1 phase, 1800 RPM, 115/230 V, 56C Frame, ODP
Single Phase ODP Motors



Regal and Century are trademarks of Regal Beloit Corporation or one of its affiliated companies.
©2019 Regal Beloit Corporation, All Rights Reserved. MC017097E





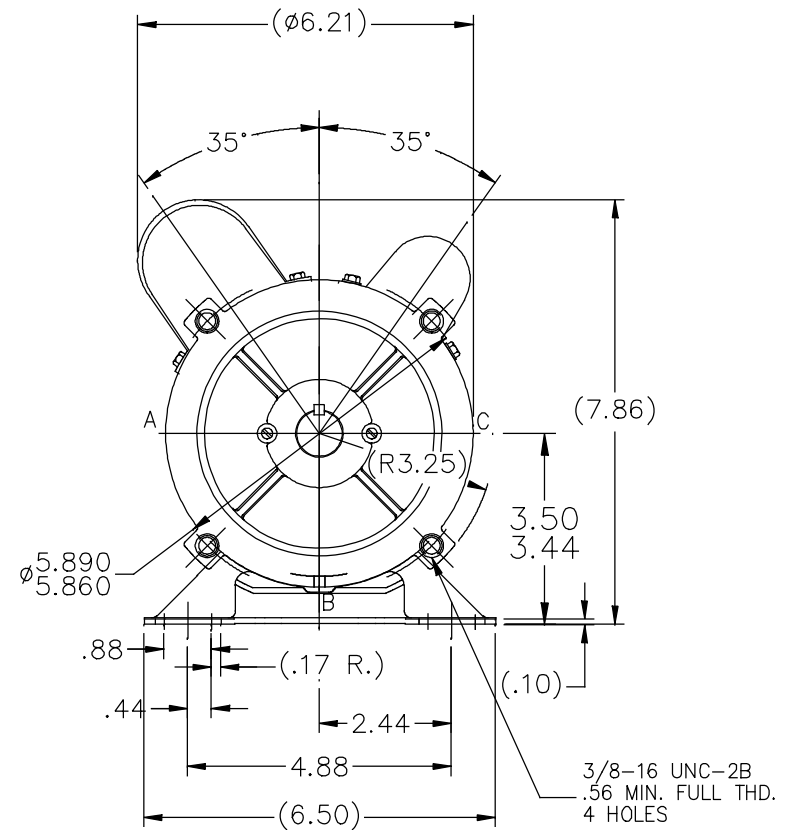
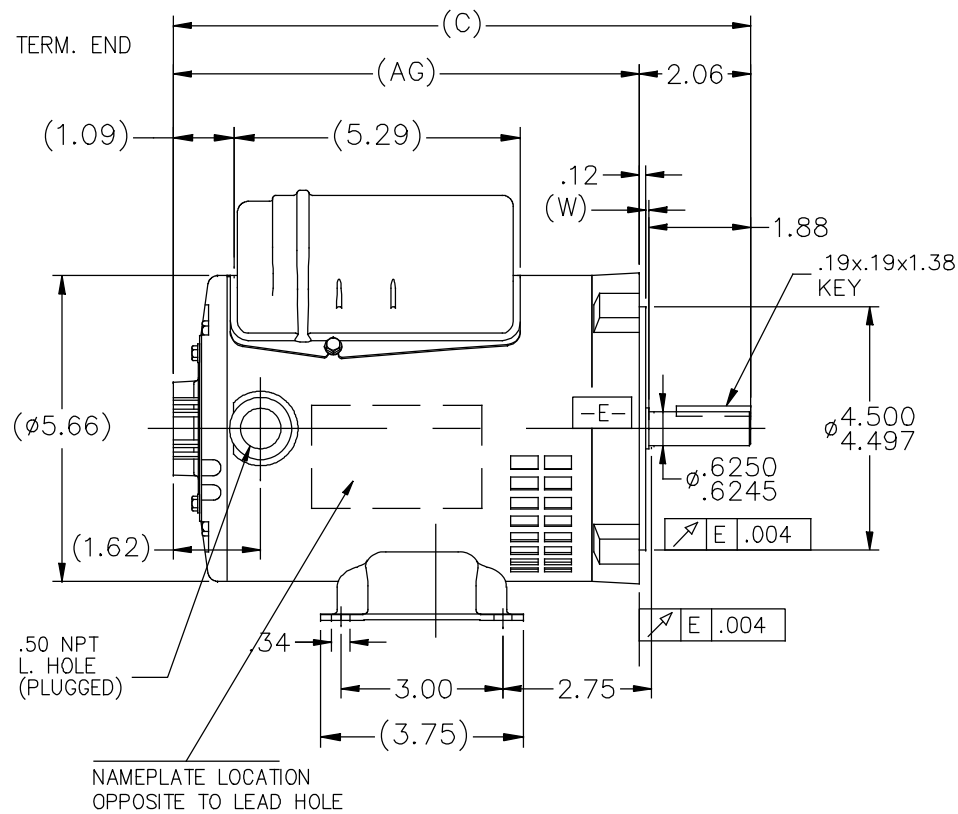
Nameplate Specifications

| | | | |
|--------------------|------------|---------------------|------------|
| Output HP | 1/3 Hp | Output KW | 0.25 kW |
| Frequency | 60 Hz | Voltage | 115/230 V |
| Current | 3.8/1.9 A | Speed | 1725 rpm |
| Service Factor | 1.35 | Phase | 1 |
| Duty | Continuous | Insulation Class | B |
| Frame | 56C | Enclosure | Drip Proof |
| Thermal Protection | None | Ambient Temperature | 40 °C |
| UL | Recognized | CSA | N |
| CE | Y | | |

Technical Specifications

| | | | |
|-----------------------|-------------|-------------------|-----------------------------|
| Electrical Type | Shaded Pole | Starting Method | Across The Line |
| Poles | 4 | Rotation | Reversible Counterclockwise |
| Mounting | Rigid base | Drive End Bearing | Ball |
| Opp Drive End Bearing | Ball | Frame Material | Rolled Steel |
| Shaft Type | Keyed | Overall Length | 10.94 in |
| Frame Length | 7.13 in | Shaft Diameter | 0.625 in |
| Shaft Extension | 2.06 in | | |

This is an uncontrolled document once printed or downloaded and is subject to change without notice. Date Created:30/10/2019

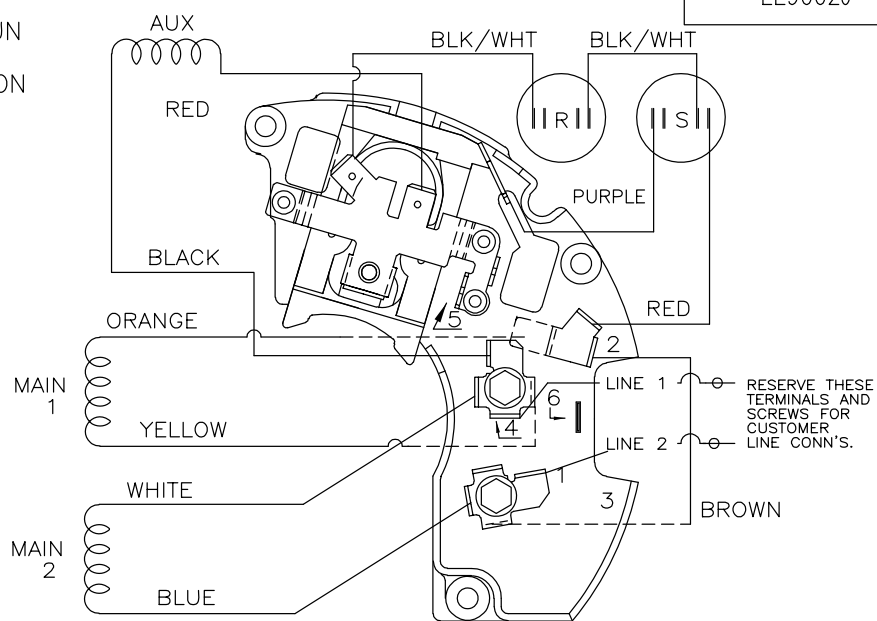
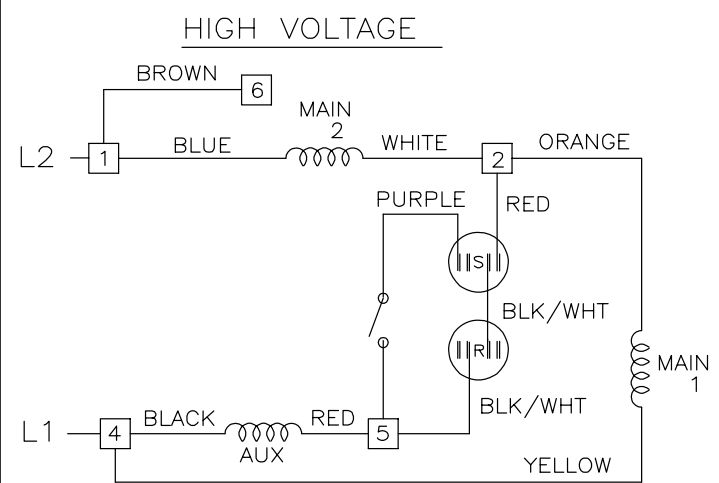
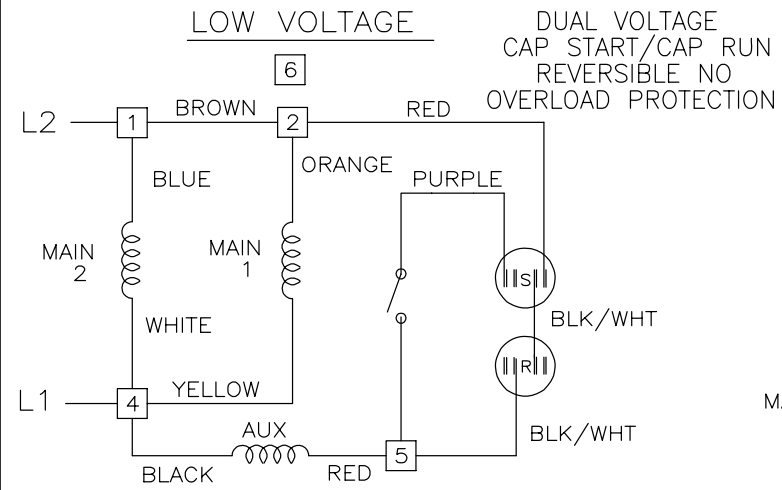


| DASH | C | AG | | DASH | C | AG | |
|------|-------|------|--|------|-------|------|--|
| 625 | 10.19 | 8.13 | | 725 | 11.19 | 9.13 | |
| 650 | 10.44 | 8.38 | | 750 | 11.44 | 9.38 | |
| 675 | 10.69 | 8.63 | | 775 | 11.69 | 9.63 | |
| 700 | 10.94 | 8.88 | | 800 | 11.94 | 9.88 | |

'W' = CLEARANCE ALLOWED FOR ALL VARIANCES IN MANUFACTURING & ASSEMBLY

| | | | | TOLERANCES UNLESS SPECIFIED | | REGAL™ Regal Beloit America, Inc. | DRAWN PVR 12/23/14 | | | |
|--|-------------------------------------|-----------|----------|-----------------------------|--------|--------------------------------------|--------------------|------|-------------------------|------|
| | | | | DEC. | INCHES | | CHK VS 12/23/14 | APPD | | |
| 03 | NAMEPLATE LOCATION CHANGED | UD | 10/24/19 | .XX | ±.03 | TITLE OUTLINE | SCALE | 3=8 | | |
| 02 | UPDATED NAME PLATE LOC. | PVR | 05-26-17 | .XXX | ±.005 | | REF | | | |
| 01 | NAME PLATE LOC. UPD PER ECO-0092253 | KK | 01/21/15 | .XXXX | ±.0005 | MAT'L. | FMF | | | |
| NO. | REVISION | BY & DATE | CHK | ANG | ±7'30" | FINISH | PREV | | | |
| THIS DRAWING IN DESIGN AND DETAIL IS OUR PROPERTY AND MUST NOT BE USED EXCEPT IN CONNECTION WITH OUR WORK ALL RIGHTS OF DESIGN AND INVENTION ARE RESERVED THIS IS AN ELECTRONICALLY GENERATED DOCUMENT - DO NOT SCALE THIS PRINT | | | | RFP | | CAD FILE | SS404131 | SIZE | DRAWING NO. PAGE 1 OF 1 | REV. |
| | | | | DIST | WP | A | SS404131 | D | | |

EE9002J



VIEWING TERM END

LOW VOLTAGE CCW ROTATION SHOWN.

FOR HIGH VOLTAGE
CONNECT BROWN TERM 2 TO TERM 6.
CONNECT WHITE TERM 4 TO TERM 2.

TO REVERSE ROTATION EITHER
VOLTAGE INTERCHANGE RED
LEAD WITH BLACK LEAD.

DASH LINES INDICATE LEADS CONNECTED
TO MOTOR SIDE OF SWITCH.

| | | | | | |
|--|---|-----------------------------|--------------|----------------------------------|---------------------|
| | | TOLERANCES UNLESS SPECIFIED | | | DRAWN SVL 6/17/2013 |
| | | DEC. | INCHES | | CHK |
| | | .X | ± - | | APPD |
| | | .XX | ± - | | SCALE NTS |
| | | | | TITLE CONNECTION DIAGRAM | REF EE9002J |
| | | | | 48 FR. - DUAL VOLTAGE REVERSIBLE | FMF PR132489 |
| 2 | TEMPLATE LOGO CHNAGED FROM MARATHON TO DAYTON | KR 05/16/2014 | VS .XXXX ± - | MAT'L. | PREV |
| NO. | REVISION | BY & DATE | CHK ANG ± - | FINISH | |
| THIS DRAWING IN DESIGN AND DETAIL IS OUR PROPERTY AND MUST NOT BE USED EXCEPT IN CONNECTION WITH OUR WORK ALL RIGHTS OF DESIGN AND INVENTION ARE RESERVED THIS IS AN ELECTRONICALLY GENERATED DOCUMENT - DO NOT SCALE THIS PRINT | | | | RFP | CAD FILE ee9002j |
| | | | | DIST | SIZE A |
| | | | | DRAWING NO. EE9002J | PAGE 1 OF 2 |
| | | | | | REV. 02 |