

# PRODUCT INFORMATION PACKET



Model No: B762

Catalog No: B762

1.500 HP General Purpose Farm Duty Motor, 1 phase, 3600 RPM, 208-230/115 V, 56 Frame, TEFC  
Single Phase Farm Duty Motors



Regal and Century are trademarks of Regal Beloit Corporation or one of its affiliated companies.

©2019 Regal Beloit Corporation, All Rights Reserved. MC017097E

REGAL



**Nameplate Specifications**

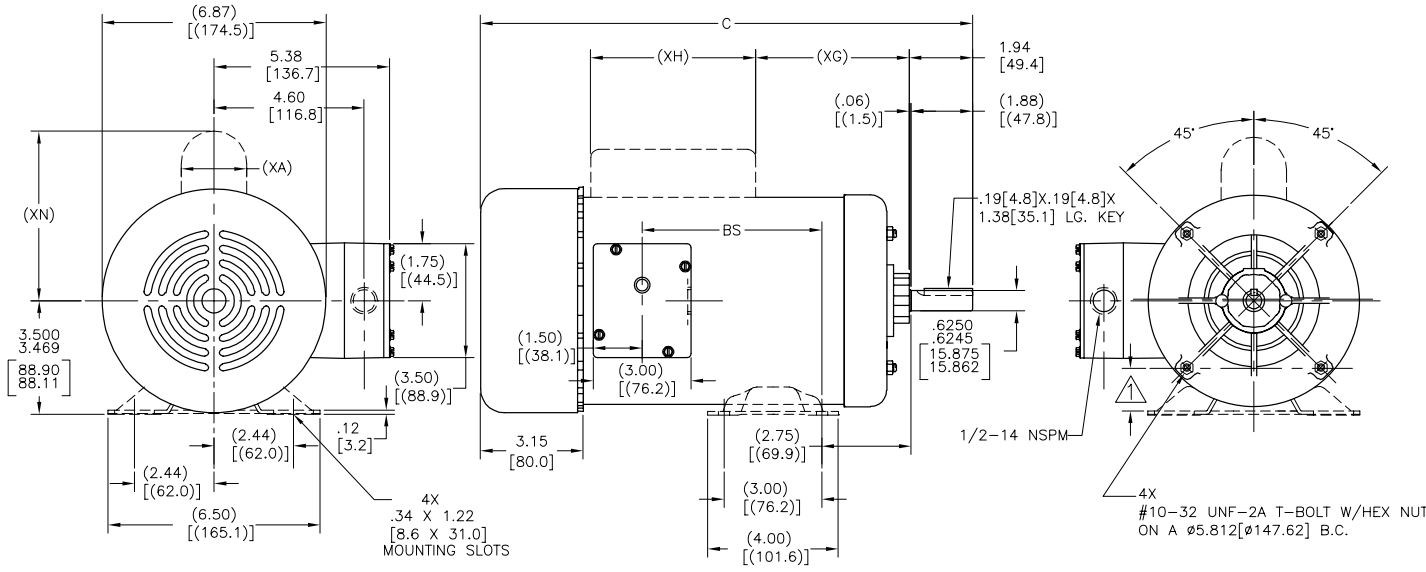
Output HP	<b>1.500 Hp</b>	Output KW	<b>1.1 kW</b>
Frequency	<b>60 Hz</b>	Voltage	<b>208-230/115 V</b>
Current	<b>8.3-8.0/16.0 A</b>	Speed	<b>3450 rpm</b>
Service Factor	<b>1.15</b>	Phase	<b>1</b>
Duty	<b>Continuous</b>	Insulation Class	<b>B</b>
Frame	<b>K56</b>	Enclosure	<b>Totally Enclosed Fan Cooled</b>
Thermal Protection	<b>None</b>	Ambient Temperature	<b>40 °C</b>
UL	<b>Recognized</b>	CSA	<b>Y</b>
CE	<b>N</b>		

**Technical Specifications**

Electrical Type	<b>Capacitor Start, Induction Run, Single Or Dual Voltage</b>	Starting Method	<b>Across The Line</b>
Poles	<b>2</b>	Rotation	<b>Reversible Counterclockwise</b>
Mounting	<b>Rigid Base</b>	Drive End Bearing	<b>Ball</b>
Opp Drive End Bearing	<b>Ball</b>	Frame Material	<b>Rolled Steel</b>
Shaft Type	<b>Keyed</b>	Overall Length	<b>12.65 in</b>
Frame Length	<b>5.50 in</b>	Shaft Diameter	<b>0.625 in</b>
Shaft Extension	<b>1.94 in</b>		

This is an uncontrolled document once printed or downloaded and is subject to change without notice. Date Created:04/11/2019

REV	ECO	REV BY	DATE	APPD	DATE
F	0009456	R.RASCON	09-26-2009	C.CONTRERAS	09-26-2009



NOTES:  
 ▲ FOR RIGID BASE ONLY: THE 2 BOTTOM HOLES IN THE MOUNTING FLANGE ARE PARALLEL FROM THE BOTTOM OF THE FEET WITHIN .030[.76]  
 2. CONDUIT HOLE LOCATION AS SPECIFIED.

ALL DIMENSIONS SHOWN IN PARENTHESIS ARE REFERENCE DIMENSIONS. ALL OTHER DIMENSIONS ARE TOLERANCED PER THE FOLLOWING CHART UNLESS OTHERWISE SPECIFIED.  
 "C" DIM. = +/- .055[1.40]  
 SHAFT EXT. = +/- .034[.86]  
 LEAD LENGTHS = +/- 1.00[25.4]  
 EXTENDED  
 THRU-BOLTS = +/- .050[1.27]  
 ANGULAR DIMS. = +/- 2'

FRAME	TYPE	C	BS	XA	XG	XH	XN
B56	CS	11.03[280.2]	1.49[37.8]	1.64[41.7]	1.59[40.4]	4.08[103.6]	4.87[123.7]
	SC,SP						
H56	CS	11.28[286.5]	1.74[44.2]	1.64[41.7]	1.84[46.7]	4.08[103.6]	4.87[123.7]
	SC,SP						
J56	CS	12.28[311.9]	2.74[69.6]	1.64[41.7]	2.84[72.1]	4.08[103.6]	4.87[123.7]
	SC,SP						
K56	CS	12.65[321.3]	3.12[79.2]	1.64[41.7]	3.21[81.5]	4.08[103.6]	4.87[123.7]
	SC,SP						
L56	CS	13.40[340.4]	3.87[98.3]	1.64[41.7]	3.96[100.6]	4.08[103.6]	4.87[123.7]
	SC,SP						
M56	CS	13.90[353.1]	4.37[111.0]	2.02[51.3]	4.46[113.3]	4.08[103.6]	5.25[133.4]
	SC,SP						

GEOMETRIC CHARACTERISTICS & SYMBOLS  
 ▭ FLATNESS  
 - STRAIGHTNESS  
 < ANGLARITY  
 ⊥ PERPENDICULARITY (SQUARENESS)  
 // PARALLELISM  
 ○ ROUNDNESS (CIRCULARITY)  
 ⌀ CYLINDRICITY  
 ~ PROFILE OF ANY SURFACE  
 ~ PROFILE OF ANY LINE  
 † RUNOUT  
 + TRUE POSITION  
 ⊙ CONCENTRICITY  
 = SYMMETRY

UNLESS OTHERWISE SPECIFIED DIM. TOLERANCES ARE AS FOLLOWS:  
 INCH X XX XXX XXXX  
 ±.1 ±.02 ±.005 ±.0005  
 mm ±0.5 ±0.13 ±0.013  
 ANG. ±.50 DEG  
 REMOVE BURRS & BREAK SHARP EDGES:  
 INCH .003-.015 mm 0.1-.04  
 CORNER FILLETS TO:  
 INCH .020 mm 0.5  
 MACHINE SURFACES:  
 INCH 125 mm 3.2  
 METRIC DIMS. SHOWN IN [BRACKETS]

DR BY: \_\_\_\_\_  
 APPD: MS 11-27-2006  
 THRD ANGLE PROJECTION  
 CONFIDENTIAL: THIS DRAWING AND ITS INFORMATION ARE THE EXCLUSIVE AND CONFIDENTIAL PROPERTY OF A.O. SMITH CORP. AND ARE NOT TO BE DISCLOSED, DUPLICATED, DISTRIBUTED OR OTHERWISE USED WITHOUT THE WRITTEN CONSENT OF A.O. SMITH CORP.  
 -ALL RIGHTS RESERVED. ASME Y14.5M 1994

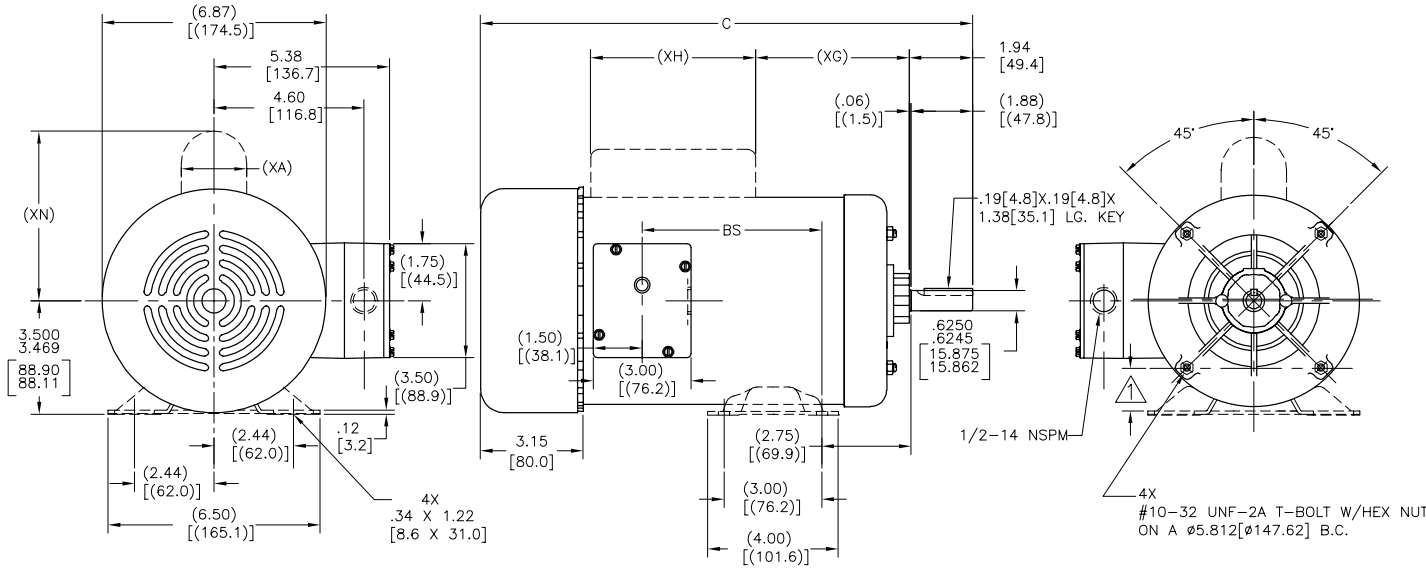
**ACSmith** ELECTRICAL PRODUCTS COMPANY  
transformation has a name. A DIVISION OF A.O. SMITH CORPORATION

DESCRIPTION: OUTLINE

SIZE: C DWG NO: 114506

SCALE: NONE SHEET: 1

REVISION:	ECO	REVISADO POR:	FECHA:	APROBADO POR:	FECHA:
F	0009456	R.RASCON	09-26-2009	C.CONTRERAS	09-26-2009



FRAME	TYPE	C	BS	XA	XG	XH	XN
B56	CS	11.03[280.2]	1.49[37.8]	1.64[41.7]	1.59[40.4]	4.08[103.6]	4.87[123.7]
	SC,SP						
H56	CS	11.28[286.5]	1.74[44.2]	1.64[41.7]	1.84[46.7]	4.08[103.6]	4.87[123.7]
	SC,SP						
J56	CS	12.28[311.9]	2.74[69.6]	1.64[41.7]	2.84[72.1]	4.08[103.6]	4.87[123.7]
	SC,SP						
K56	CS	12.65[321.3]	3.12[79.2]	1.64[41.7]	3.21[81.5]	4.08[103.6]	4.87[123.7]
	SC,SP						
L56	CS	13.40[340.4]	3.87[98.3]	1.64[41.7]	3.96[100.6]	4.08[103.6]	4.87[123.7]
	SC,SP						
M56	CS	13.90[353.1]	4.37[111.0]	2.02[51.3]	4.46[113.3]	4.08[103.6]	5.25[133.4]
	SC,SP						

= +/- .055[1.40]  
 = +/- .034[.86]  
 = +/- 1.00[25.4]  
 = +/- .050[1.27]  
 = +/- 2'

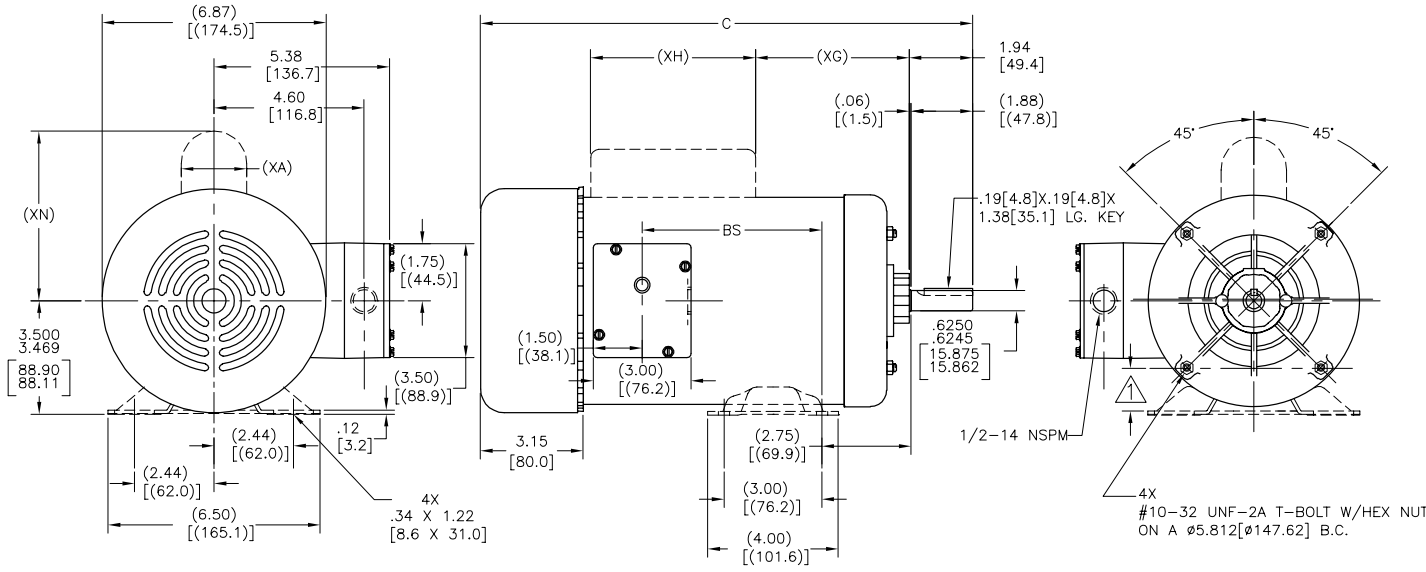
CARACTERISTICAS DE GEOMETRIA Y SIMBOLOS  
 ▽ PLANICIDAD  
 — RECTITUD  
 ∠ ANGULARIDAD  
 ⊥ PERPENDICULARIDAD (A ESQUADRA)  
 // PARALELISMO  
 ○ REDONDEZ (CIRCULARIDAD)  
 R CILINDRICIDAD  
 A PERFIL DE CUALQUIER SUPERFICIE  
 ~ PERFIL DE CUALQUIER LINEA  
 † VARIACION  
 ⊕ POSICION REAL  
 ⊙ CONCENTRICIDAD  
 = SIMETRIA

A MENOS QUE SE ESPECIFIQUE DE OTRA MANERA, LAS TOLERANCIAS DE LAS DIMS. SON LAS SIGUIENTES:  
 PULG ±.1 ±.02 ±.005 ±.0005  
 mm ±0.5 ±0.13 ±0.013  
 ANG. ±.50 GRADOS  
 ELIMINAR REBASAS Y ORILLAS FILOSAS DEL BORDE.  
 FILETEAR ESQUINA: PULG. 0.03-.015 mm 0.1-.04  
 MAQUINAR SUPERFICIES PULG. .020 mm 0.5  
 PULG. 125 mm 3.2  
 DIMS METRICAS MOSTRADAS [PARENTESIS]

DIBUJADO POR: .  
 APROBADO POR: MS 11-27-2006  
 TERCER ANGULO DE PROYECCION  
 FECHA EDS: EDS DATE  
 REV. FORMATO: F  
 CONFIDENCIAL: ESTE DIBUJO Y SU INFORMACION SON PROPIEDAD DE USO EXCLUSIVO Y CONFIDENCIAL DE A.O.SMITH CORP. Y NO DEBERAN SER REVELADOS. DUPLICADOS, DISTRIBUIDOS O USARSE DE OTRA MANERA SIN EL CONSENTIMIENTO ESCRITO DE A.O. SMITH CORP. -TODOS LOS DERECHOS RESERVADOS.ASME Y14.5M 1994

**ACSmith** **ELECTRICAL PRODUCTS COMPANY**  
*Innovation has a name.* A DIVISION OF A. O. SMITH CORPORATION  
 DESCRIPCION: **OUTLINE**  
 TAMAÑO: C NUMERO DE DIBUJO: 114506  
 ESCALA: NONE HOJA: 1

版本	ECO	编制	日期	批准	日期
F	0009456	R.RASCON	09-26-2009	C.CONTRERAS	09-26-2009



FRAME	TYPE	C	BS	XA	XG	XH	XN
B56	CS	11.03[280.2]	1.49[37.8]	1.64[41.7]	1.59[40.4]	4.08[103.6]	4.87[123.7]
	SC,SP						
H56	CS	11.28[286.5]	1.74[44.2]	1.64[41.7]	1.84[46.7]	4.08[103.6]	4.87[123.7]
	SC,SP						
J56	CS	12.28[311.9]	2.74[69.6]	1.64[41.7]	2.84[72.1]	4.08[103.6]	4.87[123.7]
	SC,SP						
K56	CS	12.65[321.3]	3.12[79.2]	1.64[41.7]	3.21[81.5]	4.08[103.6]	4.87[123.7]
	SC,SP						
L56	CS	13.40[340.4]	3.87[98.3]	1.64[41.7]	3.96[100.6]	4.08[103.6]	4.87[123.7]
	SC,SP						
M56	CS	13.90[353.1]	4.37[111.0]	2.02[51.3]	4.46[113.3]	4.08[103.6]	5.25[133.4]
	SC,SP						

= +/- .055[1.40]  
 = +/- .034[.86]  
 = +/- 1.00[25.4]  
 = +/- .050[1.27]  
 = +/- 2'

形位公差 □ 平面度 ⊥ 垂直度 ∥ 平行度 ○ 圆度 ⊙ 圆跳动 Ⓜ 最大实体要求 Ⓢ 包容要求 ⊕ 位置度 ⊖ 对称度	除另有注明 尺寸公差如下: 英寸 X XX XXX XXXX 毫米 ±0.1 ±.02 ±.005 ±.0005 角度 ±.50 度 清理毛刺和尖棱 英寸 .003-.015 毫米 0.1-0.4 内圆角 英寸 .020 毫米 0.5 表面粗糙度 英制 125 米制 3.2 米制尺寸显示在 [ ]
--	--

批准:	MS	11-27-2006
第三角投影		图版格式发布日期 EDS DATE 图版格式版本 F
机密: 本图纸及相关信息所有权归A. O. SMITH公司所有。 未经A. O. SMITH公司书面授权, 不得泄露、复制、传播或作 其他用途。—版权所有		

**ACSmith** **ELECTRICAL PRODUCTS COMPANY**  
innovation has a name. A DIVISION OF A. O. SMITH CORPORATION

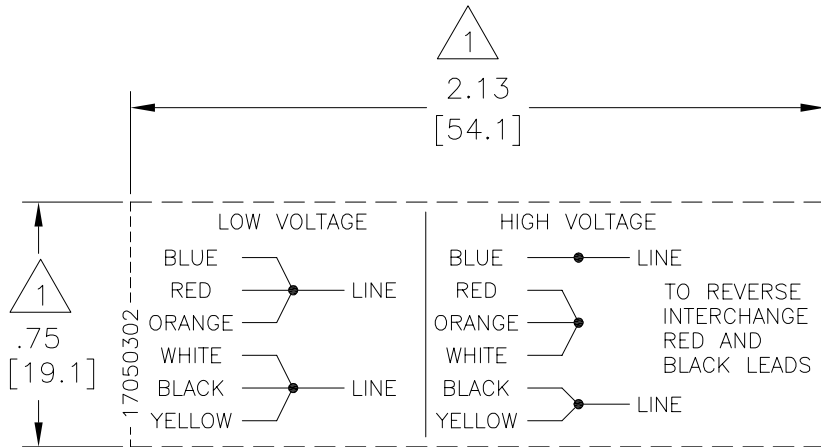
名称: OUTLINE

图号: 114506

比例: NONE

页号: 1

REV	ECO	REV BY	DATE	APPD	DATE
Y	ECO-0022098	J. COX	04-24-2012	C. McREYNOLDS	04-24-2012



NOTES:

1. DOTTED BOX REPRESENTS TOTAL PRINTED AREA ALLOWED FOR CONNECTION DIAGRAM TO FIT IN. THIS AREA DOES NOT INCLUDE THE BORDER AROUND THE CONNECTION DIAGRAM. SEE NAMEPLATE DRAWING 170500 OR 170501 FOR LOCATION.
2. DETAILS ARE NOT TO BE COPIED FROM DRAWING, BUT ARE TO BE REPRODUCED FROM ORIGINAL ARTWORK FURNISHED.
3. CHARACTERS ARE TO BE A MINIMUM OF .03[.8] TO .06[1.5] MAXIMUM IN HEIGHT.

GEOMETRIC CHARACTERISTICS & SYMBOLS

- ▭ FLATNESS
- STRAIGHTNESS
- ∠ ANGULARITY
- ⊥ PERPENDICULARITY (SQUARENESS)
- ∥ PARALLELISM
- ROUNDNESS (CIRCULARITY)
- ⊘ CYLINDRICITY
- △ PROFILE OF ANY SURFACE
- ⌒ PROFILE OF ANY LINE
- ↗ RUNOUT
- ⊕ TRUE POSITION
- ⊗ CONCENTRICITY
- ⊖ SYMMETRY

ASME Y14.5M 1994

UNLESS OTHERWISE SPECIFIED DIM. TOLERANCES ARE AS FOLLOWS:

INCH X XX XXX XXXX  
 mm ±0.5 ±0.13 ±0.013

ANG. ±.50 DEG

REMOVE BURRS & BREAK SHARP EDGES:  
 INCH .003-.015 mm 0.1-0.4

CORNER FILLETS TO:  
 INCH .020 mm 0.5

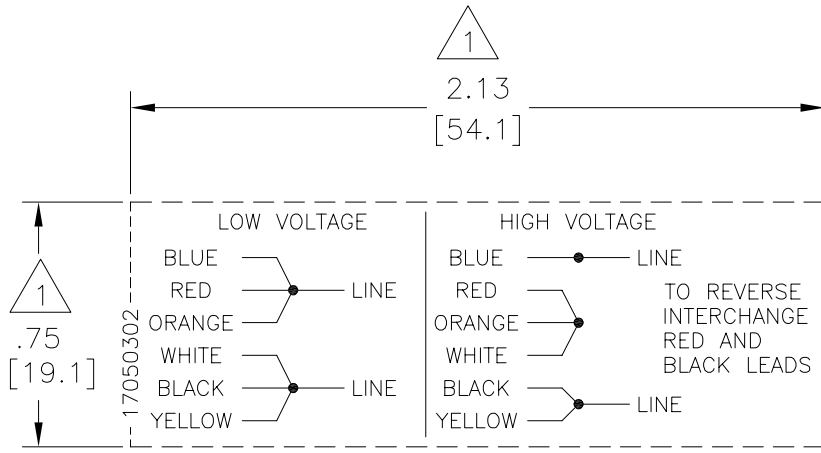
MACHINE SURFACES:  
 INCH 125 mm 3.2

METRIC DIMS. SHOWN IN [BRACKETS]

DR BY:	MLC	03-04-1985
APPD:	MLC	03-13-1985
THIRD ANGLE PROJECTION		EDS DATE 11-11-2011 FORMAT REV G
CONFIDENTIAL: THIS DRAWING AND ITS INFORMATION ARE THE EXCLUSIVE AND CONFIDENTIAL PROPERTY OF REGAL-BELOIT CORPORATION AND ARE NOT TO BE DISCLOSED, DUPLICATED, DISTRIBUTED OR OTHERWISE USED WITHOUT THE WRITTEN CONSENT OF REGAL-BELOIT CORPORATION. -ALL RIGHTS RESERVED.		

DESCRIPTION CONN DIAGRAM-NAMEPLATE	
SIZE A	DWG NO 17050302
SCALE NONE	SHEET 1

REVISION:	ECO	REVISADO POR:	J. COX	FECHA:	04-24-2012	APROBADO POR:	C. McREYNOLDS	FECHA:	04-24-2012
Y	ECO-0022098								



NOTAS:

1. LA CAJA PUNTEADA REPRESENTA EL AREA TOTAL IMPRESA PERMITIDA PARA EL DIAGRAMA DE CONEXION PARA QUE ENCAJE EN ESTA AREA NO INCLUYE EL BORDE AL REDEDOR DEL DIAGRAMA DE CONEXION. VER DIBUJO DE PLACA DE DATOS 170500 O 170501 PARA UBICACION.
2. LOS DETALLES NO DEBEN SER COPIADOS DEL DIBUJO, PERO VA A SER REPRODUCIDA DEL TRABAJO ORIGINAL SUMINISTRADO.
3. LOS CARACTERES SON DE UN MINIMO DE .03[.8] A .06[1.5] EN ALTURA MAXIMA.

CARACTERISTICAS DE GEOMETRIA Y SIMBOLOS

- ∇ PLANICIDAD
- RECTITUD
- ∠ ANGULARIDAD
- ⊥ PERPENDICULARIDAD (A ESCUADRA)
- // PARALELISMO
- REDONDEZ (CIRCULARIDAD)
- ⊘ CILINDRICIDAD
- △ PERFIL DE CUALQUIER SUPERFICIE
- ∩ PERFIL DE CUALQUIER LINEA
- ↑ VARIACION
- ⊙ POSICION REAL
- ⊕ CONCENTRICIDAD
- ⊖ SIMETRIA

ASME Y14.5M 1994

A MENOS QUE SE ESPECIFIQUE DE OTRA MANERA, LAS TOLERANCIAS DE LAS DIMS. SON LAS SIGUIENTES:

PULG	±.1	±.02	±.005	±.0005
mm	±0.5	±0.13	±0.013	

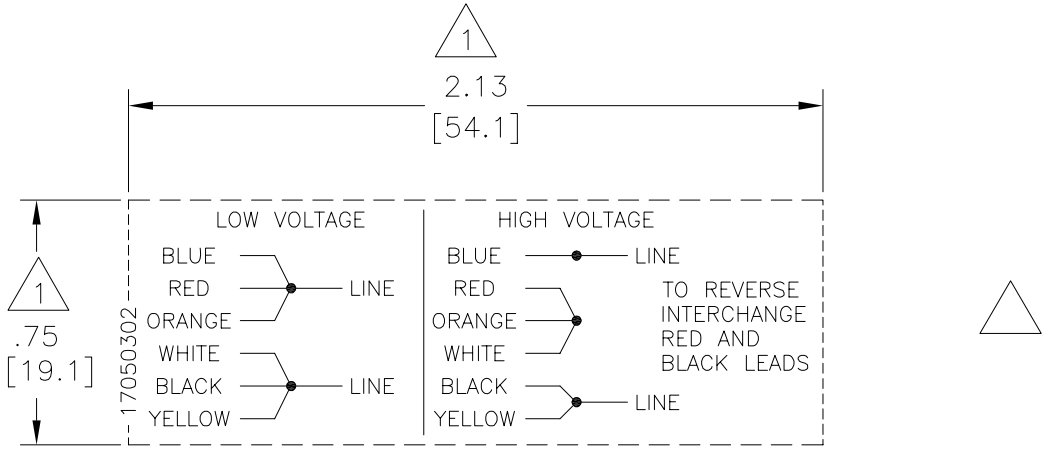
ANG. ±.50 GRADOS  
 ELIMINAR REBABAS Y ORILLAS FILOSAS DEL BORDE.  
 PULG .003-.015 mm 0.1-0.4  
 FILETEAR ESQUINA: PULG .020 mm 0.5  
 MAQUINAR SUPERFICIES  
 PULG 125 mm 3.2

DIMS METRICAS MOSTRADAS [PARENTESIS]

DIBUJADO POR:	MLC	03-04-1985
APROBADO POR:	MLC	03-13-1985
TERCER ANGULO DE PROYECCION		FECHA EDS: 11-11-2011 REV. FORMATO: G
CONFIDENCIAL: ESTE DIBUJO Y SU INFORMACION SON PROPIEDAD DE USO EXCLUSIVO Y CONFIDENCIAL DE REGAL-BELOIT CORPORATION Y NO DEBERAN SER REVELADOS, DUPLICADOS, DISTRIBUIDOS O USARSE DE OTRA MANERA SIN EL CONSENTIMIENTO ESCRITO DE REGAL-BELOIT CORPORATION.-TODOS LOS DERECHOS RESERVADOS.		

DESCRIPCION: CONN DIAGRAM-NAMEPLATE	
TAMAÑO: A	NUMERO DE DIBUJO: 17050302
ESCALA: NONE	HOJA: 1

版本	ECO	编制	日期	批准	日期
Y	ECO-0022098	J. COX	04-24-2012	C. McREYNOLDS	04-24-2012



形位公差

- 平面度
- 直线度
- ∠ 倾斜度
- ⊥ 垂直度
- ∥ 平行度
- 圆度
- ⊘ 圆柱度
- ⊙ 面轮廓度
- ⊖ 线轮廓度
- ↗ 圆跳动
- ⊙ 位置度
- ⊙ 同轴度
- ≡ 对称度

ASME Y14.5M 1994

除另有注明  
尺寸公差如下:

英寸	X	XX	XXX	XXXX
毫米	±.1	±.02	±.005	±.0005
毫米	±0.5	±0.13	±0.013	

角度 ±.50 度  
清理毛刺和尖棱  
英寸 .003-.015 毫米 0.1-0.4

内圆角  
英寸 .020 毫米 0.5  
表面粗糙度  
英制 125 米制 3.2

米制尺寸显示在 [ ]

绘图:	MLC	03-04-1985
批准:	MLC	03-13-1985
第三角投影		图纸格式发布日期 11-11-2011 图纸格式版本 G
机密:本图纸及相关信息所有权归REGAL-BELOIT CORPORATION. 未经REGAL-BELOIT CORPORATION书面授权, 不得泄露、复制、传播或作其他用途。--版权所有		

名称 CONN DIAGRAM-NAMEPLATE	
图幅 A	图号 17050302
比例 NONE	页号 1