

PRODUCT INFORMATION PACKET



Model No: B620
Catalog No: B620
3/4 HP Centrifugal Pumps Motor, 1 phase, 3600 RPM, 230/115 V, 56J Frame, ODP
Centrifugal Pumps Motors



Regal and Century are trademarks of Regal Beloit Corporation or one of its affiliated companies.
©2019 Regal Beloit Corporation, All Rights Reserved. MC017097E

The REGAL logo consists of the word 'REGAL' in a bold, white, sans-serif font, set against a dark grey rectangular background with a slight shadow effect.

REGAL



Nameplate Specifications

Output HP	3/4 Hp	Output KW	0.56 kW
Frequency	60 Hz	Voltage	230/115 V
Current	SF 6.6/13.2 A	Speed	3450 rpm
Service Factor	1.5	Phase	1
Duty	Continuous	Insulation Class	B
Frame	L56J	Enclosure	Drip Proof
Thermal Protection	Thermally Protected	Ambient Temperature	40 °C
UL	Recognized	CSA	Y
CE	N		

Technical Specifications

Electrical Type	Capacitor Start, Induction Run, Single Or Dual Voltage	Starting Method	Across The Line
Poles	2	Rotation	Clockwise
Mounting	Rigid Base	Drive End Bearing	Ball
Opp Drive End Bearing	Ball	Frame Material	Rolled Steel
Shaft Type	Threaded	Overall Length	11.80 in
Frame Length	6.25 in	Shaft Diameter	0.625 in
Shaft Extension	2.45 in		

This is an uncontrolled document once printed or downloaded and is subject to change without notice. Date Created:04/11/2019

4

3

2

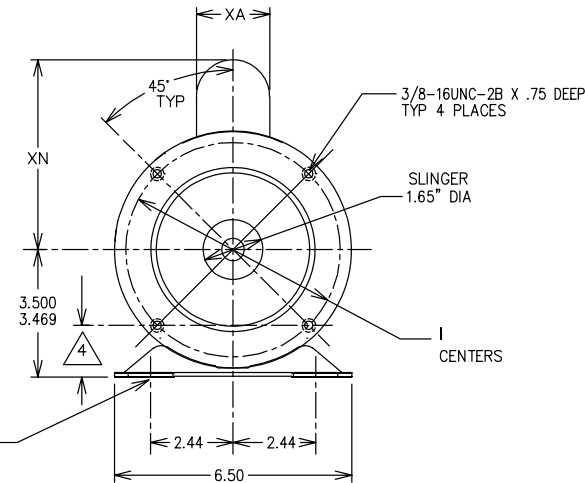
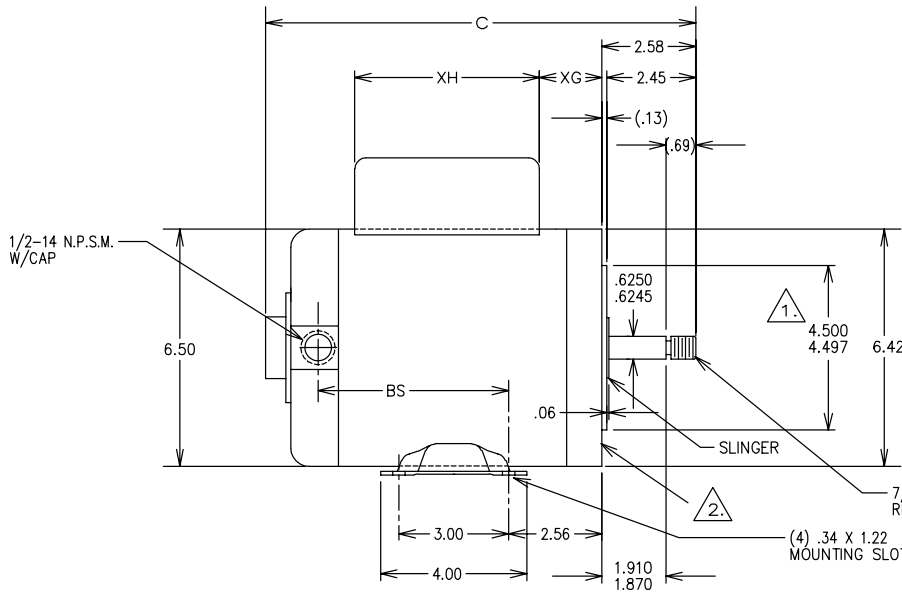
1

REV	ECO	REV BY	DATE	APPD	DATE
E	0000913	AJB	07-27-2008	AJB	07-27-2008

D/S	GRP.	TYPE	FRAME	C	BS	XA	XH	XG	XN
4	-01	CX	F56J	11.57	4.99	2.01	5.06	1.71	5.20
4	-02	CS	X56J	13.05	6.47	1.64	4.08	4.18	4.87
4	-03	CS	F56J	11.30	4.72	1.64	4.08	2.43	4.87
4	-04	CS	K56J	11.05	4.47	1.64	4.08	2.18	4.87
4	-05	CS	L56J	11.80	5.22	1.64	4.08	2.93	4.87
4	-06	CS	T56J	12.05	5.47	1.64	4.08	3.18	4.87

NOTES:

1. RABBET DIAMETER IS CONCENTRIC WITH SHAFT CENTERLINE WITHIN .004 T.I.R.
2. FACE OF MOUNTING FLANGE IS PERPENDICULAR TO SHAFT CENTERLINE WITHIN .004 T.I.R.
3. SHAFT RUNOUT NOT TO EXCEED .002 T.I.R.
4. TWO BOTTOM HOLES ARE EQUIDISTANT FROM BOTTOM OF BASE WITHIN .030.



GEOMETRIC CHARACTERISTICS & SYMBOLS	
□	FLATNESS
—	STRAIGHTNESS
∠	ANGULARITY
⊥	PERPENDICULARITY (SQUARENESS)
∥	PARALLELISM
○	ROUNDNESS (CIRCULARITY)
⊘	CYLINDRICITY
⌒	PROFILE OF ANY SURFACE
⤴	PROFILE OF ANY LINE
↗	RUNOUT
⊕	TRUE POSITION
⊙	CONCENTRICITY
⊖	SYMMETRY

UNLESS OTHERWISE SPECIFIED DIM. TOLERANCES ARE AS FOLLOWS:
 INCH X XX XXX XXXX
 ±.1 ±.02 ±.005 ±.0005
 mm ±0.5 ±0.13 ±0.013
 ANG. ±.50 DEG
 REMOVE BURRS & BREAK SHARP EDGES:
 INCH .003-.015 mm 0.1-.04
 CORNER FILLETS TO:
 INCH .020 mm 0.5
 MACHINE SURFACES:
 INCH 125 mm 3.2
 METRIC DIMS. SHOWN IN [BRACKETS]

DR BY:	AJM	02-08-1991
APPD:	SAS	02-13-1991
THIRD ANGLE PROJECTION	EDS DATE 01-21-2007 FORMAT REV F	
CONFIDENTIAL: THIS DRAWING AND ITS INFORMATION ARE THE EXCLUSIVE AND CONFIDENTIAL PROPERTY OF A.O. SMITH CORP. AND ARE NOT TO BE DISCLOSED, DUPLICATED, DISTRIBUTED OR OTHERWISE USED WITHOUT THE WRITTEN CONSENT OF A.O. SMITH CORP. —ALL RIGHTS RESERVED. ASME Y14.5M 1994		

		ELECTRICAL PRODUCTS COMPANY <small>A DIVISION OF A.O. SMITH CORPORATION</small>
DESCRIPTION		
OUTLINE RIGID BASE BB OP/EN		
SIZE	C	DWG NO 179311
SCALE	NONE	SHEET 1

4

3

2

1

4

3

2

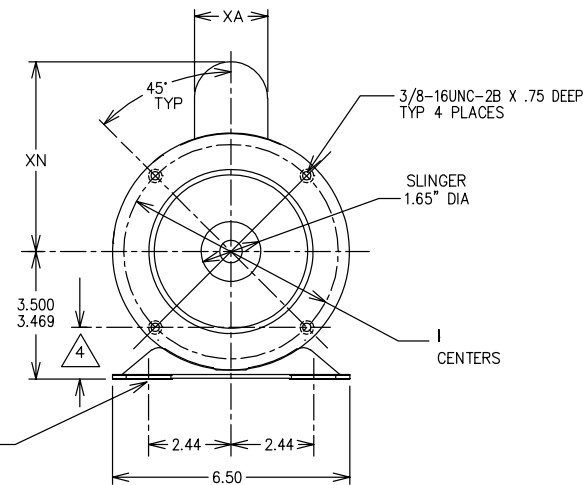
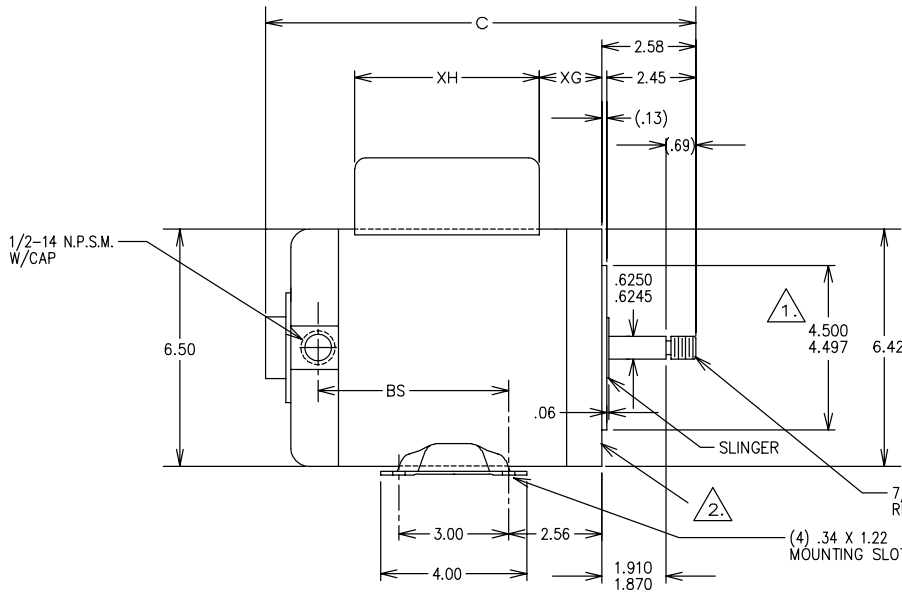
1

REVISION:	ECO	REVISADO POR:	FECHA:	APROBADO POR:	FECHA:
E	0000913	AJB	07-27-2008	AJB	07-27-2008

D/S	GRP.	TYPE	FRAME	C	BS	XA	XH	XG	XN
4	-01	CX	F56J	11.57	4.99	2.01	5.06	1.71	5.20
4	-02	CS	X56J	13.05	6.47	1.64	4.08	4.18	4.87
4	-03	CS	F56J	11.30	4.72	1.64	4.08	2.43	4.87
4	-04	CS	K56J	11.05	4.47	1.64	4.08	2.18	4.87
4	-05	CS	L56J	11.80	5.22	1.64	4.08	2.93	4.87
4	-06	CS	T56J	12.05	5.47	1.64	4.08	3.18	4.87

NOTES:

1. RABBET DIAMETER IS CONCENTRIC WITH SHAFT CENTERLINE WITHIN .004 T.I.R.
2. FACE OF MOUNTING FLANGE IS PERPENDICULAR TO SHAFT CENTERLINE WITHIN .004 T.I.R.
3. SHAFT RUNOUT NOT TO EXCEED .002 T.I.R.
4. TWO BOTTOM HOLES ARE EQUIDISTANT FROM BOTTOM OF BASE WITHIN .030.



CARACTERISTICAS DE GEOMETRIA Y SIMBOLOS:
 ▽ PLANICIDAD
 ⊥ RECTITUD
 ∠ ANGULARIDAD
 ⊥ PERPENDICULARIDAD (A ESQUADRA)
 // PARALELISMO
 ○ REDONDEZ (CIRCULARIDAD)
 R CILINDRICIDAD
 ⊖ PERFIL DE CUALQUIER SUPERFICIE
 ⊖ PERFIL DE CUALQUIER LINEA
 † VARIACION
 ⊕ POSICION REAL
 ⊕ CONCENTRICIDAD
 = SIMETRIA

A MENOS QUE SE ESPECIFIQUE DE OTRA MANERA, LAS TOLERANCIAS DE LAS DIMS. SON LAS SIGUIENTES:
 PULG ±.1 ±.02 ±.005 ±.0005
 mm ±0.5 ±0.13 ±0.013
 ANG. ±.50 GRADOS
 ELIMINAR REBASAS Y ORILLAS FILOSAS DEL BORDE.
 FILETEAR ESQUINA: PULG. .020 mm 0.5
 MAQUINAR SUPERFICIES
 PULG. 125 mm 3.2
 DIMS METRICAS MOSTRADAS [PARENTESIS]

DIBUJADO POR:	AJM	02-08-1991
APROBADO POR:	SAS	02-13-1991
TERCER ANGULO DE PROYECCION		FECHA EDS: 01-21-2007 REV. FORMATO: F
CONFIDENCIAL: ESTE DIBUJO Y SU INFORMACION SON PROPIEDAD DE USO EXCLUSIVO Y CONFIDENCIAL DE A.O.SMITH CORP. Y NO DEBERAN SER REVELADOS, DUPLICADOS, DISTRIBUIDOS O USARSE DE OTRA MANERA SIN EL CONSENTIMIENTO ESCRITO DE A.O. SMITH CORP. - TODOS LOS DERECHOS RESERVADOS. ASME Y14.5M 1994		

	ELECTRICAL PRODUCTS COMPANY A DIVISION OF A. O. SMITH CORPORATION
DESCRIPCION:	OUTLINE RIGID BASE BB OP/EN
TAMAÑO:	C
NUMERO DE DIBUJO:	179311
ESCALA:	NONE
HOJA:	1

4

3

2

1

4

3

2

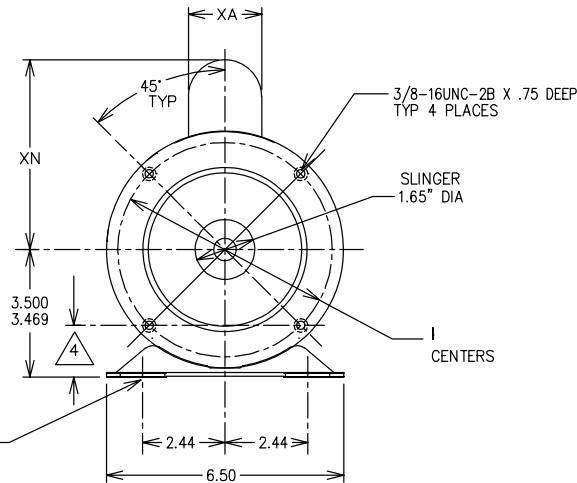
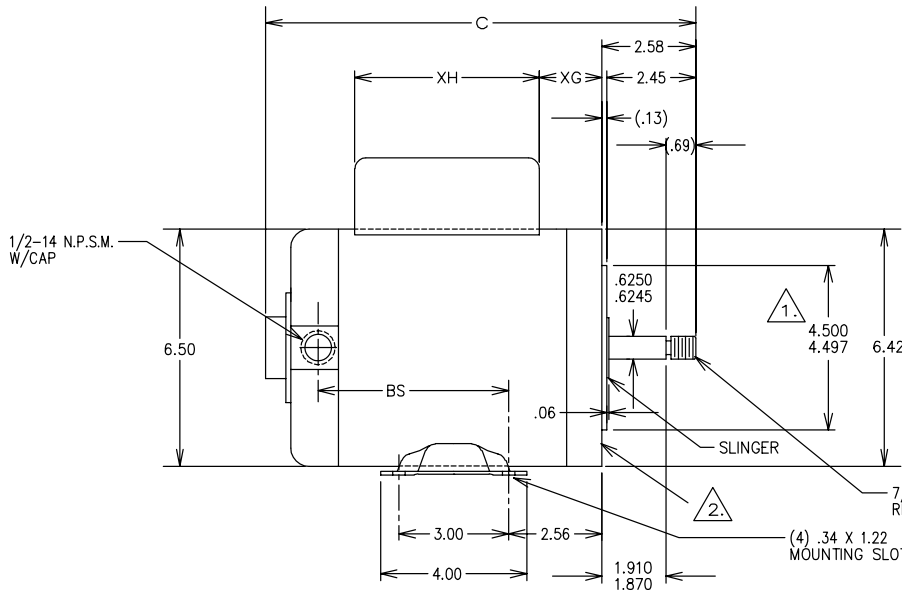
1

版本	ECO	编制	日期	批准	日期
E	0000913	AJB	07-27-2008	AJB	07-27-2008

D/S	GRP.	TYPE	FRAME	C	BS	XA	XH	XG	XN
4	-01	CX	F56J	11.57	4.99	2.01	5.06	1.71	5.20
4	-02	CS	X56J	13.05	6.47	1.64	4.08	4.18	4.87
4	-03	CS	F56J	11.30	4.72	1.64	4.08	2.43	4.87
4	-04	CS	K56J	11.05	4.47	1.64	4.08	2.18	4.87
4	-05	CS	L56J	11.80	5.22	1.64	4.08	2.93	4.87
4	-06	CS	T56J	12.05	5.47	1.64	4.08	3.18	4.87

NOTES:

1. RABBET DIAMETER IS CONCENTRIC WITH SHAFT CENTERLINE WITHIN .004 T.I.R.
2. FACE OF MOUNTING FLANGE IS PERPENDICULAR TO SHAFT CENTERLINE WITHIN .004 T.I.R.
3. SHAFT RUNOUT NOT TO EXCEED .002 T.I.R.
4. TWO BOTTOM HOLES ARE EQUIDISTANT FROM BOTTOM OF BASE WITHIN .030.



形位公差 □ 平面度 — 直线度 ∠ 倾斜度 ⊥ 垂直度 ∥ 平行度 ○ 圆度 ⊙ 圆跳动 ⊖ 圆轮廓度 ⊕ 圆跳动 ⊖ 圆轮廓度 ≡ 对称度	除另有注明 尺寸公差如下: 英寸 X XX XXX XXXX 毫米 ±0.1 ±0.02 ±.005 ±.0005 角度 ±.50 度 清理毛刺和尖棱 英寸 .003-.015 毫米 0.1-0.4 内圆角 英寸 .020 毫米 0.5 表面粗糙度 英制 125 米制 3.2 米制尺寸显示在 []
--	---

绘图:	AJM	02-08-1991
批准:	SAS	02-13-1991
第三角投影		
图框格式发布日期	01-21-2007	
图框格式版本	F	
机密: 本图纸及相关信息所有版权归A. O. SMITH公司所有。未经A. O. SMITH公司书面授权, 不得泄露、复制、传播或作其他用途。—版权所有		
ASME Y14.5M 1994		

		ELECTRICAL PRODUCTS COMPANY <small>A DIVISION OF A. O. SMITH CORPORATION</small>	
名称			
OUTLINE RIGID BASE BB OP/EN			
图幅	C	图号	179311
比例	NONE	页号	1

4

3

2

1