

PRODUCT INFORMATION PACKET



Model No: B412

Catalog No: B412

1/3 HP General Purpose Motor, 1 phase, 3600 RPM, 115/208-230 V, 56 Frame, TENV
Single Phase TENV Motors



Regal and Century are trademarks of Regal Beloit Corporation or one of its affiliated companies.

©2019 Regal Beloit Corporation, All Rights Reserved. MC017097E

REGAL



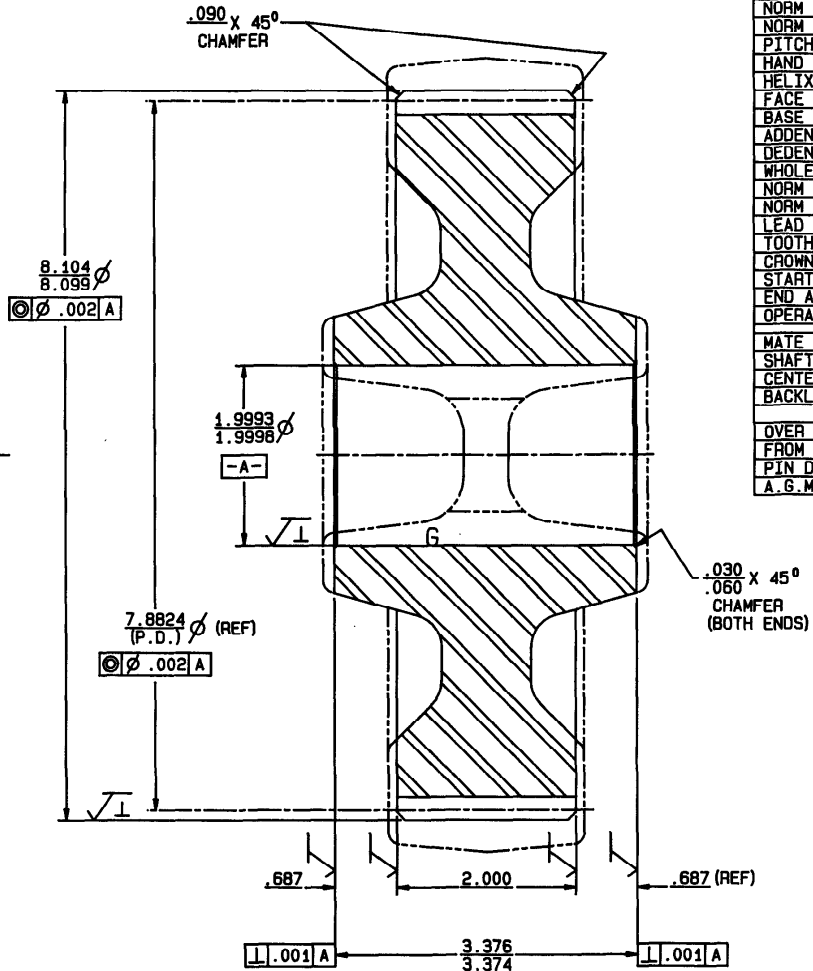
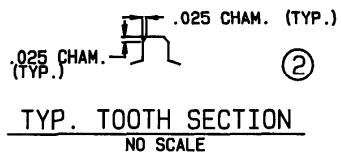
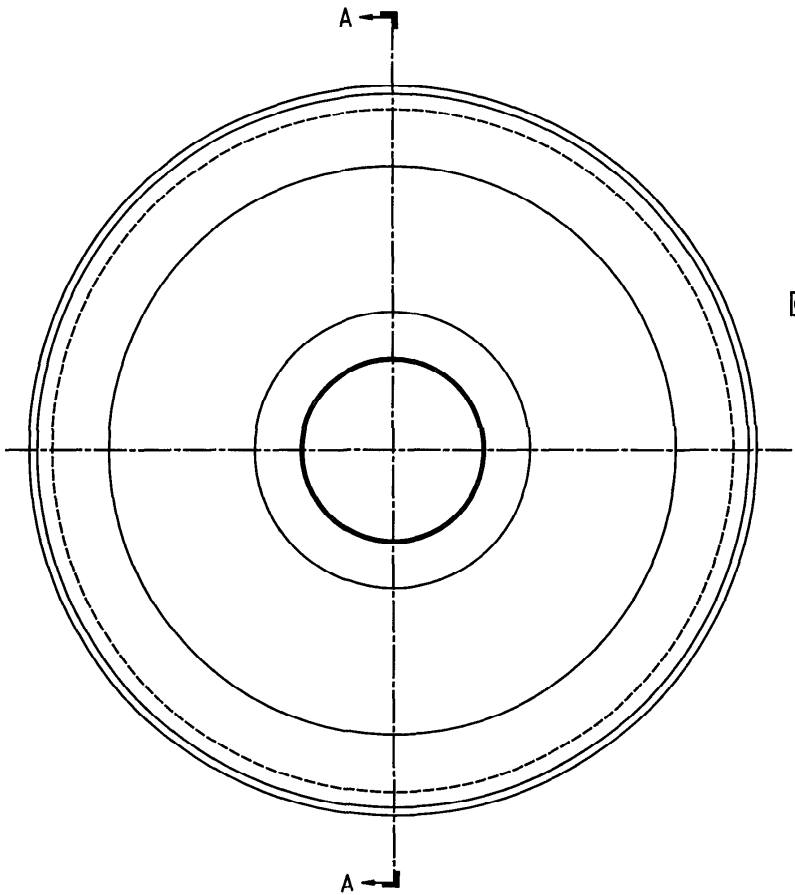
Nameplate Specifications

Output HP	1/3 Hp	Output KW	0.25 kW
Frequency	60 Hz	Voltage	115/208-230 V
Current	4.8/2.5-2.4 A	Speed	3450 rpm
Service Factor	1.15	Phase	1
Duty	Continuous	Insulation Class	B
Frame	H56	Enclosure	Totally Enclosed Non Ventilated
Thermal Protection	None	Ambient Temperature	40 °C
UL	Recognized	CSA	Y
CE	N		

Technical Specifications

Electrical Type	Capacitor Start, Induction Run, Single Or Dual Voltage	Starting Method	Across The Line
Poles	2	Rotation	Reversible Counterclockwise
Mounting	Rigid Base	Drive End Bearing	Ball
Opp Drive End Bearing	Ball	Frame Material	Rolled Steel
Shaft Type	Keyed	Overall Length	10.13 in
Frame Length	4.13 in	Shaft Diameter	0.625 in
Shaft Extension	1.97 in		

This is an uncontrolled document once printed or downloaded and is subject to change without notice. Date Created:04/11/2019



SECTION A-A

HELICAL GEAR DATA:	
NUMBER OF TEETH	67
NORM DIAMETRAL PITCH	9
NORM PRESSURE ANGLE	20°
PITCH DIAMETER	7.8824
HAND	LEFT
HELIX ANGLE	19° 41' 17"
FACE WIDTH	2.000
BASE DIAMETER	7.3551
ADDENDUM	.116
DEDENDUM	.144
WHOLE DEPTH (APPROX)	.260
NORM CHORDAL ADDENDUM	.117
NORM CIRCULAR THICKNESS	.1715 / .1700
LEAD	71.1576
TOOTH FORM	
CROWN / FLANK	
START ACTIVE PROFILE	17.6° ROLL
END ACTIVE PROFILE	26.5° ROLL
OPERATING PITCH DIA	22.1° ROLL
MATE PART NUMBER	B411
SHAFT ANGLE	PARALLEL
CENTER DISTANCE	8.000
BACKLASH (ASSEMBLED)	.006 / .009
PIN MEASUREMENT	
OVER (2) PINS	8.144 / 8.140
FROM CENTER TO (1) PIN	
PIN DIAMETER	.192
A.S.M.A. QUALITY CLASS	

This drawing and the information contained hereon is the exclusive property of Duro Division, Regal-Beloit Corp and shall not be reproduced, used or disclosed to others except as authorized through written consent from Duro Division, Regal-Beloit Corp.				MACH TOL X ± .030 XX ± .015 XXX ± .005 XXXX ± .001 ANG ± .30'	<p>DIVISION OF REGAL-BELOIT CORPORATION P.O. BOX 296, BELLOIT, WISCONSIN 53511</p>
MODEL	A270	WHERE USED	6535	TITLE	
DWN	W.B.	DATE	11-24-87	MATERIAL	MAKE FROM: B411
CKD.		DATE		FORGING (4340 STEEL)	PART NO
REV.	C.O. NO.	DATE	DESCRIPTION	BY	B412
1	4525	11-24-87	REDRAWN W/ FORGING-RELEASE	WB	
2	5229	7/12/88	ADDED TOOTH VIEW W/CHAM.	CS	
				SCALE	FULL
				DWG. SIZE	C