

PRODUCT INFORMATION PACKET



Model No: B386
Catalog No: B386
5.0 HP Air Compressor Motor, 1 phase, 3600 RPM, 208-230 V, 56HZ Frame, ODP
Air Compressor Motors



Regal and Century are trademarks of Regal Beloit Corporation or one of its affiliated companies.
©2019 Regal Beloit Corporation, All Rights Reserved. MC017097E

The REGAL logo consists of the word 'REGAL' in a bold, white, sans-serif font, set against a dark grey, trapezoidal background with a slight shadow effect.

REGAL



Nameplate Specifications

Output HP	5.0 Hp	Output KW	3.7 kW
Frequency	60 Hz	Voltage	208-230 V
Current	22.0 A	Speed	3450 rpm
Service Factor	1.15	Phase	1
Duty	Continuous	Insulation Class	B
Frame	R56HZ	Enclosure	Drip Proof
Thermal Protection	Thermally Protected	Ambient Temperature	40 °C
UL	Recognized	CSA	Y
CE	N		

Technical Specifications

Electrical Type	Capacitor Start, Capacitor Run, Single Or Dual Voltage	Starting Method	Across The Line
Poles	2	Rotation	Clockwise
Mounting	Rigid Base	Drive End Bearing	Ball
Opp Drive End Bearing	Ball	Frame Material	Rolled Steel
Shaft Type	Keyed	Overall Length	14.56 in
Frame Length	8.75 in	Shaft Diameter	0.875 in
Shaft Extension	2.31 in		

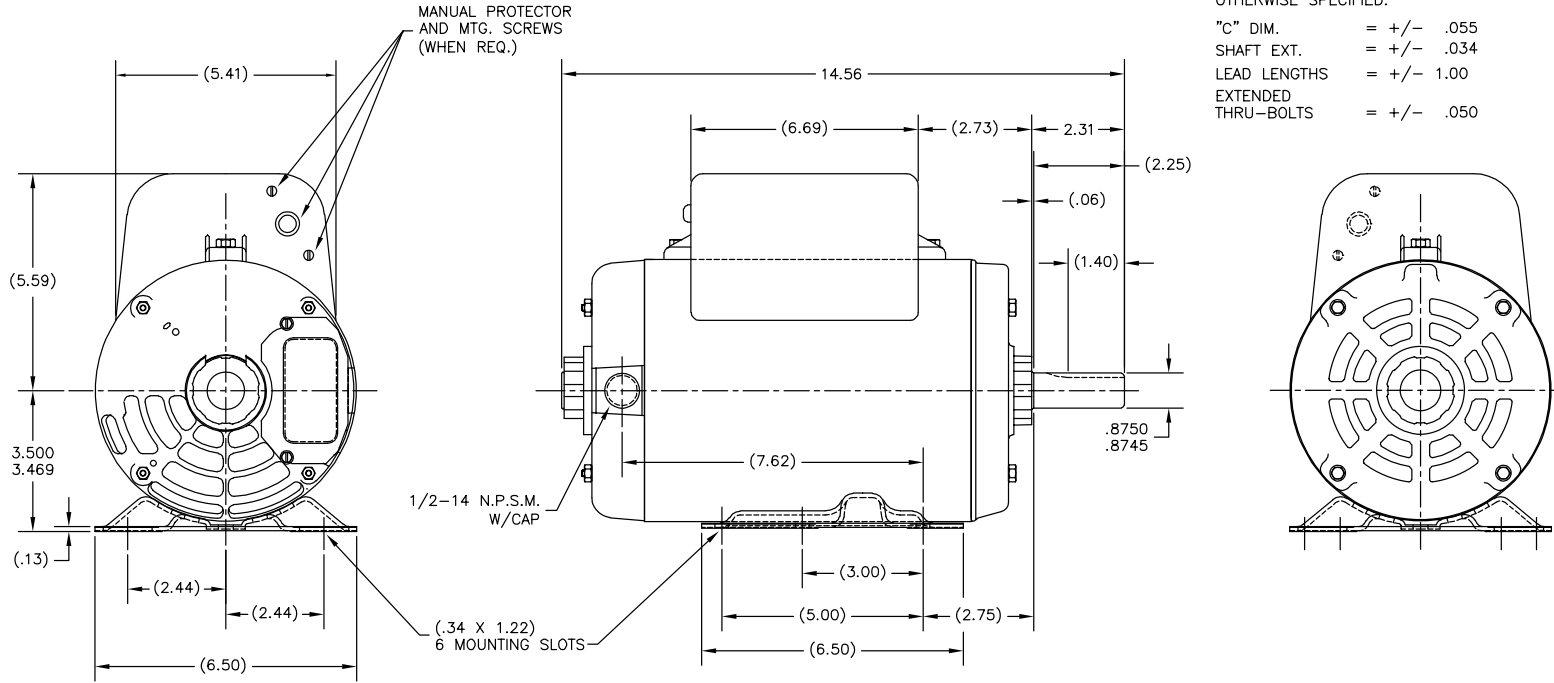
This is an uncontrolled document once printed or downloaded and is subject to change without notice. Date Created:30/10/2019

Uncontrolled Copy

REV	ECO	REV BY	DATE	APPD	DATE
E	ECO-0025365	T.HUANG	04-17-2012	B.C.SHEN	04-17-2012

ALL DIMENSIONS SHOWN IN PARENTHESIS ARE REFERENCE DIMENSIONS. ALL OTHER DIMENSIONS ARE TOLERANCED PER THE FOLLOWING CHART UNLESS OTHERWISE SPECIFIED.

"C" DIM. = +/- .055
 SHAFT EXT. = +/- .034
 LEAD LENGTHS = +/- 1.00
 EXTENDED THRU-BOLTS = +/- .050



NOTE:
 TERMINAL BOX TO BE LOCATED AT 12:00 WITHIN +/- 1 1/2"

GEOMETRIC CHARACTERISTICS & SYMBOLS	
▭	FLATNESS
—	STRAIGHTNESS
∠	ANGULARITY
⊥	PERPENDICULARITY (SQUARENESS)
∥	PARALLELISM
○	ROUNDNESS (CIRCULARITY)
⊘	CYLINDRICITY
⌒	PROFILE OF ANY SURFACE
⌒	PROFILE OF ANY LINE
↗	RUNOUT
⊕	TRUE POSITION
⊙	CONCENTRICITY
⊖	SYMMETRY
ASME Y14.5M 1994	

UNLESS OTHERWISE SPECIFIED DIM. TOLERANCES ARE AS FOLLOWS:
INCH: X .1 XX .02 XXX .005 XXXX .0005
mm: ±0.5 ±0.13 ±0.013
ANG. ±.50 DEG
REMOVE BURRS & BREAK SHARP EDGES:
INCH: .003-.015 mm: 0.1-.04
CORNER FILLETS TO:
INCH: .020 mm: 0.5
MACHINE SURFACES:
INCH: 125 mm: 3.2
METRIC DIMS. SHOWN IN [BRACKETS]

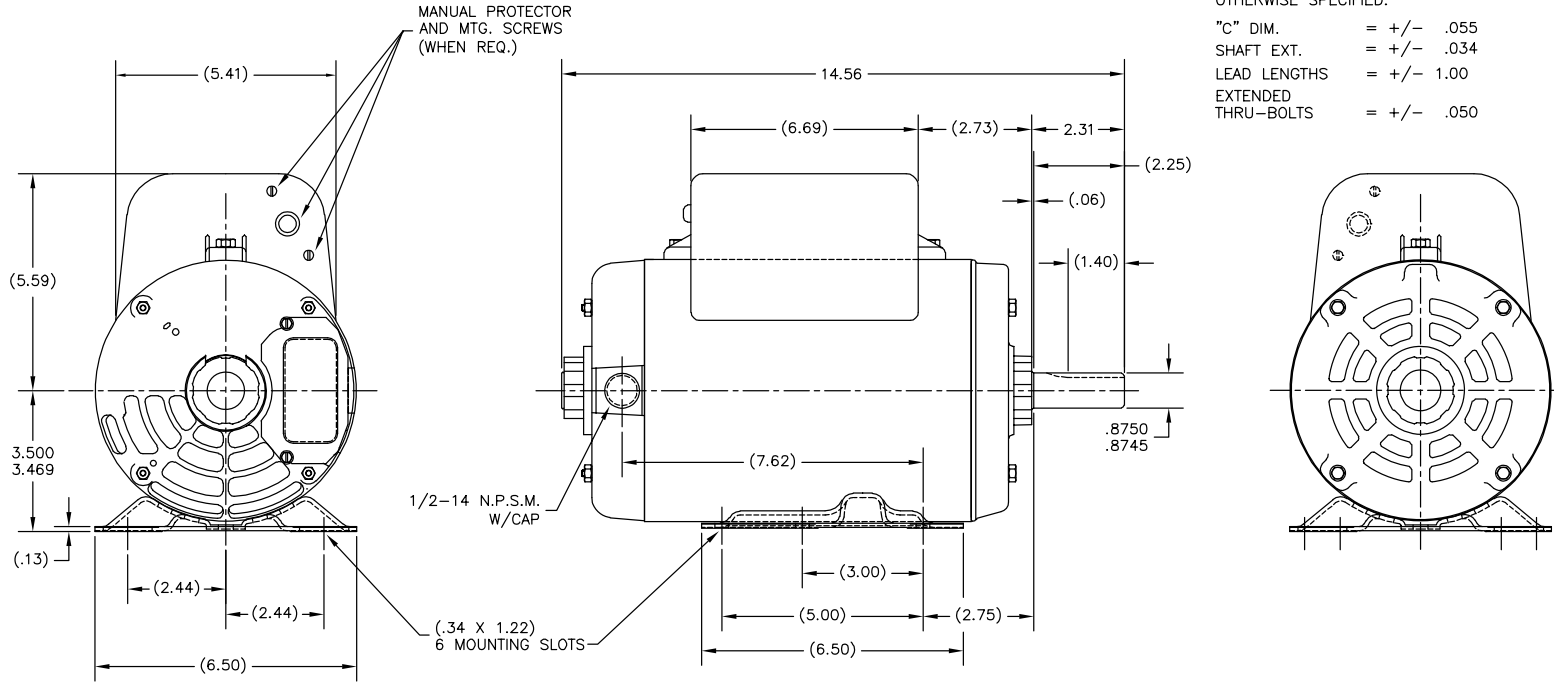
DR BY: JAH	
APPD:	
THIRD ANGLE PROJECTION	EDS DATE 11-11-2011 FORMAT REV G
CONFIDENTIAL: THIS DRAWING AND ITS INFORMATION ARE THE EXCLUSIVE AND CONFIDENTIAL PROPERTY OF REGAL-BELOIT CORPORATION AND ARE NOT TO BE DISCLOSED, DUPLICATED, DISTRIBUTED OR OTHERWISE USED WITHOUT THE WRITTEN CONSENT OF REGAL-BELOIT CORPORATION. -ALL RIGHTS RESERVED.	

DESCRIPTION	
OUTLINE RIGID BASE-LINE BB OP/EN	
SIZE C	DWG NO 179714
SCALE NONE	SHEET 1

REVISION: ECO	REVISADO POR: T.HUANG	FECHA: 04-17-2012	APROBADO POR: B.C.SHEN	FECHA: 04-17-2012
E	ECO-0025365			

ALL DIMENSIONS SHOWN IN PARENTHESIS ARE REFERENCE DIMENSIONS. ALL OTHER DIMENSIONS ARE TOLERANCED PER THE FOLLOWING CHART UNLESS OTHERWISE SPECIFIED.

"C" DIM.	= +/- .055
SHAFT EXT.	= +/- .034
LEAD LENGTHS	= +/- 1.00
EXTENDED THRU-BOLTS	= +/- .050



MANUAL PROTECTOR AND MTG. SCREWS (WHEN REQ.)

1/2-14 N.P.S.M. W/CAP

(.34 X 1.22) 6 MOUNTING SLOTS

NOTE:
TERMINAL BOX TO BE LOCATED AT 12:00 WITHIN +/- 1 1/2"

CARACTERISTICAS DE GEOMETRIA Y SIMBOLOS	ASME Y14.5M 1994
PLANICIDAD	
RECTITUD	
ANGULARIDAD	
PERPENDICULARIDAD (A ESCUADRA)	
PARALELISMO	
REDONDEZ (CIRCULARIDAD)	
CILINDRICIDAD	
PERFIL DE CUALQUIER SUPERFICIE	
PERFIL DE CUALQUIER LINEA	
VARIACION	
POSICION REAL	
CONCENTRICIDAD	
SIMETRIA	

A MENOS QUE SE ESPECIFIQUE DE OTRA MANERA, LAS TOLERANCIAS DE LAS DIMS. SON LAS SIGUIENTES:	DIMS METRICAS MOSTRADAS [PARENTESIS]
PULG ±.1 ±.02 ±.005 ±.0005	
mm ±0.5 ±0.13 ±0.013	
ANG. ±.50 GRADOS	
ELIMINAR REBASAS Y ORILLAS FILOSAS DEL BORDE.	
PULG .003-.015 mm 0.1-0.4	
FILETEAR ESQUINA: PULG .020 mm 0.5	
MAQUINAR SUPERFICIES	
PULG 125 mm 3.2	

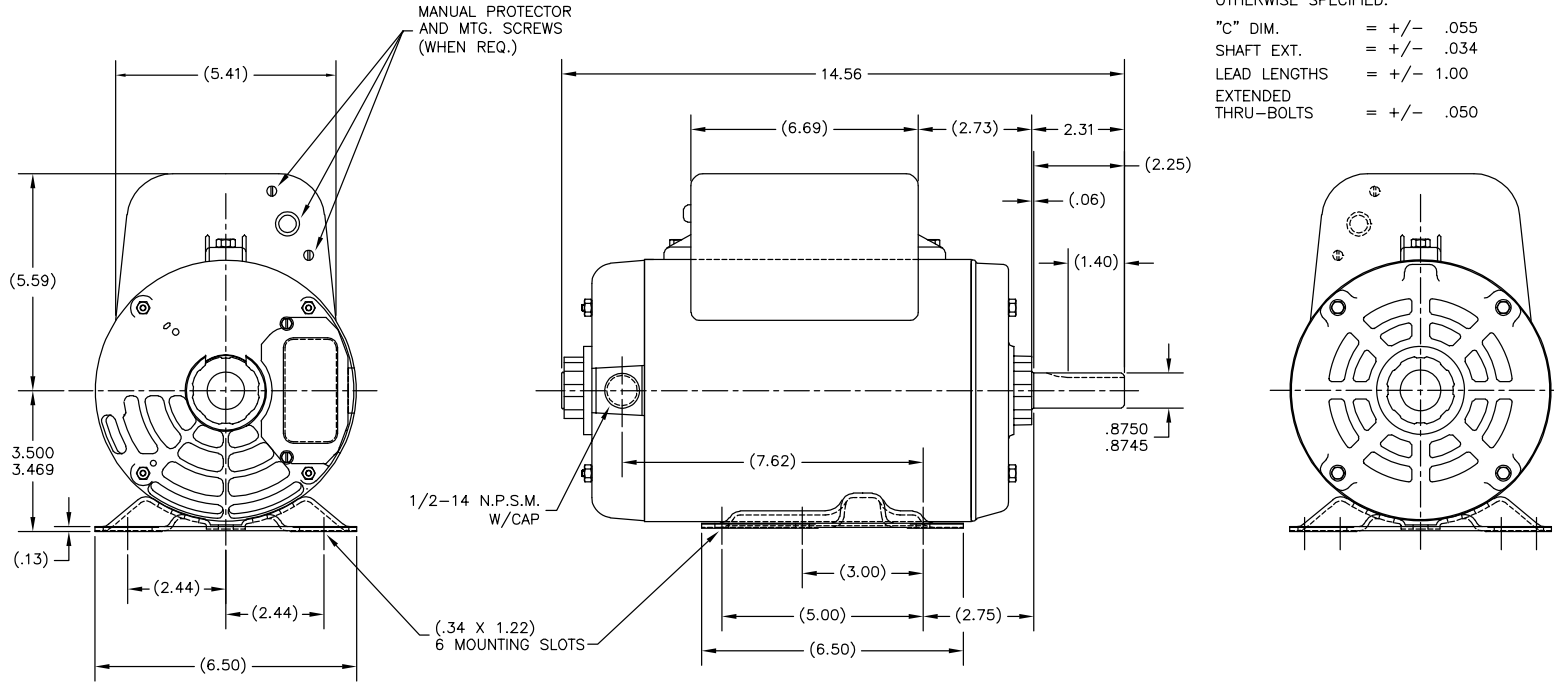
DIBUJADO POR: JAH	
APROBADO POR:	
TERCER ANGULO DE PROYECCION	FECHA EDS: 11-11-2011 REV. FORMATO: G
CONFIDENCIAL: ESTE DIBUJO Y SU INFORMACION SON PROPIEDAD DE USO EXCLUSIVO Y CONFIDENCIAL DE REGAL-BELOIT CORPORATION. Y NO DEBERAN SER REVELADOS, DUPLICADOS, DISTRIBUIDOS O USARSE DE OTRA MANERA SIN EL CONSENTIMIENTO ESCRITO DE REGAL-BELOIT CORPORATION. -TODOS LOS DERECHOS RESERVADOS.	

DESCRIPCION: OUTLINE RIGID BASE-LINE BB OP/EN	
TAMAÑO: C	NUMERO DE DIBUJO: 179714
ESCALA: NONE	HOJA: 1

版本	ECO	编制	日期	批准	日期
E	ECO-0025365	T.HUANG	04-17-2012	B.C.SHEN	04-17-2012

ALL DIMENSIONS SHOWN IN PARENTHESIS ARE REFERENCE DIMENSIONS. ALL OTHER DIMENSIONS ARE TOLERANCED PER THE FOLLOWING CHART UNLESS OTHERWISE SPECIFIED.

"C" DIM. = +/- .055
 SHAFT EXT. = +/- .034
 LEAD LENGTHS = +/- 1.00
 EXTENDED THRU-BOLTS = +/- .050



NOTE:
 TERMINAL BOX TO BE LOCATED AT 12:00 WITHIN +/- 1 1/2"

形位公差	除另有注明
□ 平面度	尺寸公差如下:
— 直线度	英寸 X XX XXX XXXX
∠ 倾斜度	英寸 ±.1 ±.02 ±.005 ±.0005
⊥ 垂直度	毫米 ±0.5 ±0.13 ±0.013
∥ 平行度	角度 ±.50 度
○ 圆度	清理毛刺和尖棱
⊙ 圆跳动	英寸 .003-.015 毫米 0.1-0.4
⌒ 面轮廓度	内圆角
⌒ 线轮廓度	英寸 .020 毫米 0.5
⊕ 圆跳动	表面粗糙度
⊕ 倾斜度	英制 125 米制 3.2
⊕ 对称度	米制尺寸显示在 []

ASME Y14.5M 1994

绘图:	JAH
批准:	
第三角投影	图纸格式发布日期 11-11-2011 图纸格式版本 C
机密:	本图纸及相关信息所有权归REGAL-BELOIT CORPORATION. 未经REGAL-BELOIT CORPORATION书面授权, 不得泄露、复制、传播或作其他用途。--版权所有



名称
 OUTLINE
 RIGID BASE-LINE BB OP/EN

图幅	C	图号	179714
比例	NONE	页号	1