

PRODUCT INFORMATION PACKET



Model No: B183
Catalog No: B183
1/4 HP General Purpose Motor, 1 phase, 3600 RPM, 115/230 V, 48 Frame, TEFC
Single Phase TEFC Motors



Regal and Century are trademarks of Regal Beloit Corporation or one of its affiliated companies.
©2019 Regal Beloit Corporation, All Rights Reserved. MC017097E

The REGAL logo is a grey rectangular box with the word 'REGAL' in white, bold, uppercase letters. It is positioned on a blue and black halftone background that runs vertically down the right side of the page.

REGAL



Nameplate Specifications

Output HP	1/4 Hp	Output KW	0.19 kW
Frequency	60 Hz	Voltage	115/230 V
Current	6.0/3.0 A	Speed	3450 rpm
Service Factor	1	Phase	1
Duty	Continuous	Insulation Class	B
Frame	48	Enclosure	Totally Enclosed Fan Cooled
Thermal Protection	Automatic	Ambient Temperature	40 °C
UL	Recognized	CSA	Y
CE	N		

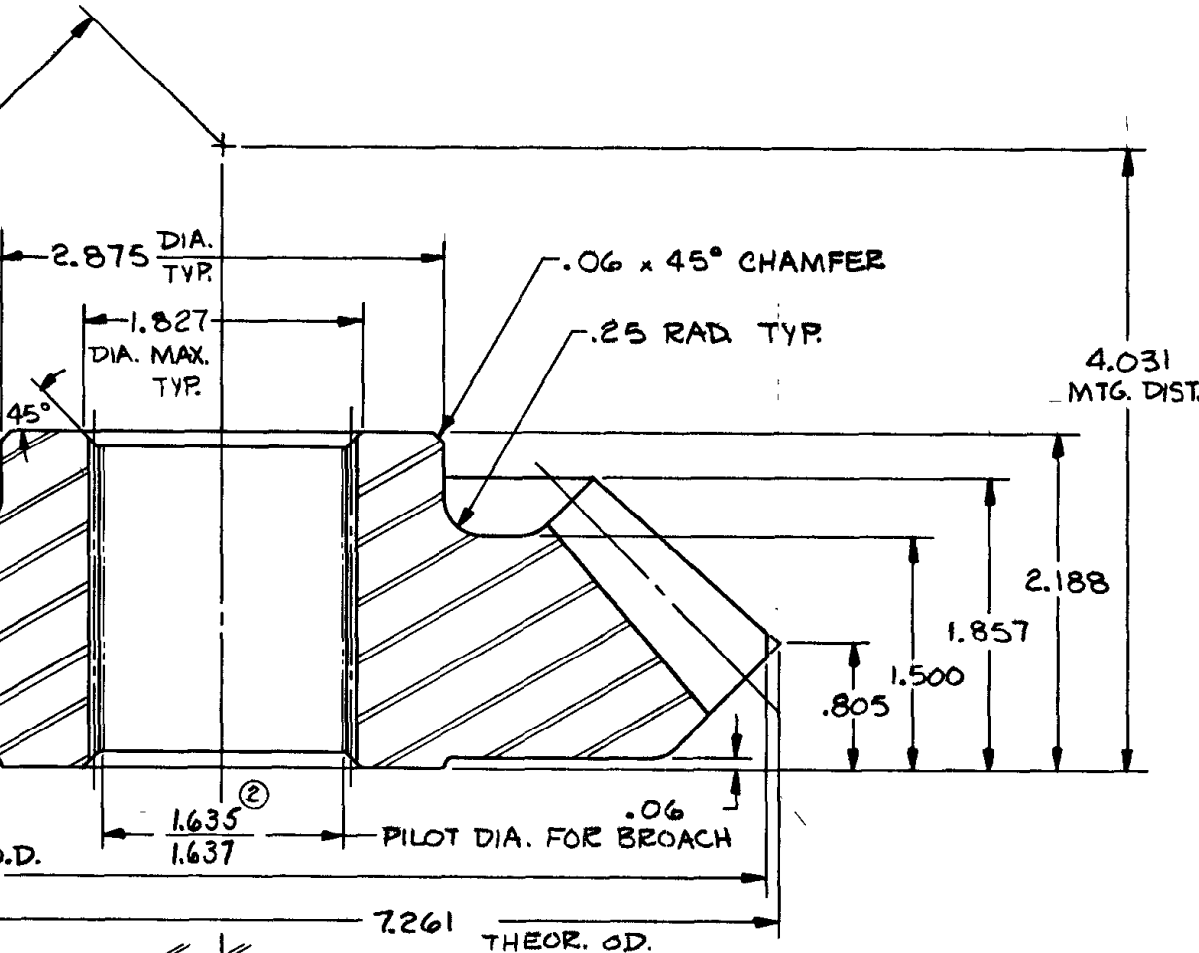
Technical Specifications

Electrical Type	Capacitor Start Induction Run	Starting Method	Across The Line
Poles	2	Rotation	Clockwise/Counterclockwise
Mounting	Resilient Base	Drive End Bearing	Ball
Opp Drive End Bearing	Ball	Frame Material	Rolled Steel
Shaft Type	Flat	Overall Length	11.62 in
Frame Length	5.15 in	Shaft Diameter	0.500 in
Shaft Extension	1.60 in		

This is an uncontrolled document once printed or downloaded and is subject to change without notice. Date Created:04/11/2019

Uncontrolled Copy

B183



GEAR TOOTH DATA

NO. OF TEETH	24
DIAMETRAL PITCH	3.5
PRESSURE ANGLE	20°
PITCH DIAMETER (REF.)	6.857
PITCH ANGLE (REF.)	45°
ROOT ANGLE (APPROX.)	41°
ADDENDUM (REF.)	.288
WHOLE DEPTH (APPROX.)	.627
CHORDAL ADDENDUM (REF.)	.291
CHORDAL THICKNESS	.449

MATE PART NO.	B182
NO. OF TEETH IN MATE	24
SHAFT ANGLE (REF.)	90°
BACKLASH (ASSEM.)	.006-.008

**INTERNAL INVOLUTE SPLINE DATA
FLAT ROOT SIDE FIT**

NO. OF TEETH	27
PITCH	16/32
PRESSURE ANGLE	30°
BASE DIAMETER	1.4614
PITCH DIAMETER	1.6875
MAJOR DIAMETER	1.772 / 1.778 (1)
FORM DIAMETER	1.754
MINOR DIAMETER	1.635 / 1.637
CIRCULAR SPACE WIDTH	
MAX. ACTUAL	.1011
MIN. EFFECTIVE	.0982

MAX. MEASUREMENT BETWEEN PINS	1.5341
PIN DIAMETER	.108

