

# PRODUCT INFORMATION PACKET



Model No: ARB2054L1  
Catalog No: ARB2054L1  
1/2-1/4 HP Fan and Blower HVAC/R Motor, 1 phase, 1800 RPM, 115 V, 56 Frame, TEAO  
Belt Drive Motors



Regal and Century are trademarks of Regal Beloit Corporation or one of its affiliated companies.  
©2019 Regal Beloit Corporation, All Rights Reserved. MC017097E

REGAL



**Nameplate Specifications**

Output HP	<b>1/2-1/4 Hp</b>	Output KW	<b>0.37 kW</b>
Frequency	<b>60 Hz</b>	Voltage	<b>115 V</b>
Current	<b>8.2/5.3 A</b>	Speed	<b>1725/1140 rpm</b>
Service Factor	<b>1</b>	Phase	<b>1</b>
Duty	<b>Continuous</b>	Insulation Class	<b>B</b>
Frame	<b>56</b>	Enclosure	<b>Totally Enclosed Air Over</b>
Thermal Protection	<b>Automatic</b>	Ambient Temperature	<b>40 °C</b>
UL	<b>Recognized</b>	CSA	<b>Y</b>
CE	<b>N</b>		

**Technical Specifications**

Electrical Type	<b>Split Phase</b>	Starting Method	<b>Across The Line</b>
Poles	<b>4/6</b>	Rotation	<b>Reversible</b>
Mounting	<b>Resilient Base</b>	Drive End Bearing	<b>Ball</b>
Opp Drive End Bearing	<b>Ball</b>	Frame Material	<b>Rolled Steel</b>
Shaft Type	<b>Keyed</b>	Overall Length	<b>11.84 in</b>
Frame Length	<b>6.69 in</b>	Shaft Diameter	<b>0.625 in</b>
Shaft Extension	<b>2 in</b>		

This is an uncontrolled document once printed or downloaded and is subject to change without notice. Date Created:30/10/2019

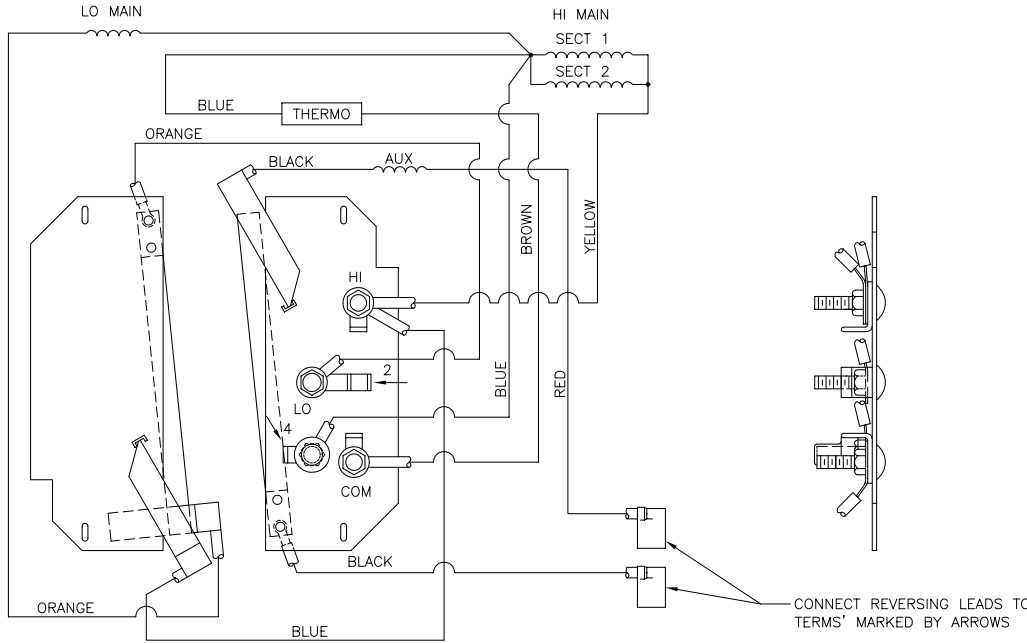
4

3

2

1

REV	REFERENCE ECN	REFERENCE PROJECT	REV BY	DATE	APPD	DATE
B		03401301	Liangz	09-18-2007	MArgue	10-04-2007



CONNECT LINE AS FOLLOWS	
HIGH SPEED	TERMINAL HI & COM
LOW SPEED	TERMINAL LO & COM

-001	CCW	BLACK → 2
		RED → 4
-002	CW	RED → 2
		BLACK → 4

CONNECT REVERSING LEADS TO TERMS MARKED BY ARROWS

GEOMETRIC CHARACTERISTICS & SYMBOLS

- ▭ FLATNESS
- STRAIGHTNESS
- ∠ ANGULARITY
- ⊥ PERPENDICULARITY (SQUARENESS)
- // PARALLELISM
- ROUNDNESS (CIRCULARITY)
- ⊘ CYLINDRICITY
- ⌒ PROFILE OF ANY SURFACE
- ⌒ PROFILE OF ANY LINE
- ⊕ RUNOUT
- ⊕ TRUE POSITION
- ◎ CONCENTRICITY
- ⊖ SYMMETRY

UNLESS OTHERWISE SPECIFIED  
DIM. TOLERANCES ARE AS FOLLOWS:

INCH	±.1	±.02	±.005	±.0005
mm	±0.5	±0.13	±0.013	

ANG. ±.50 DEG  
REMOVE BURRS & BREAK SHARP EDGES:  
INCH .003-.015 mm 0.1-.04  
CORNER FILLETS TO:  
INCH .020 mm 0.5  
MACHINE SURFACES:  
INCH 125 mm 3.2  
METRIC DIMS. SHOWN IN [BRACKETS]

DR BY:	BLANKENSHIP	10/22/2004
APPD:		
THIRD ANGLE PROJECTION		EDS DATE 01-21-2007 FORMAT REV E
CONFIDENTIAL: THIS DRAWING AND ITS INFORMATION ARE THE EXCLUSIVE AND CONFIDENTIAL PROPERTY OF A.O. SMITH CORP. AND ARE NOT TO BE DISCLOSED, DUPLICATED, DISTRIBUTED OR OTHERWISE USED WITHOUT THE WRITTEN CONSENT OF A.O. SMITH CORP. -ALL RIGHTS RESERVED.		
ASME Y14.5M 1994		

<b>A.O. SMITH</b> ELECTRICAL PRODUCTS COMPANY TIPPECANOE, INDIANA		A DIVISION OF A. O. SMITH CORPORATION CORPORATION COPYRIGHT 1995
DESCRIPTION <b>CONN DIAGRAM - EXTERNAL</b> <b>FR56</b>		
SIZE	C	DWG NO 618164
SCALE	NONE	SHEET 1

4

3

2

1

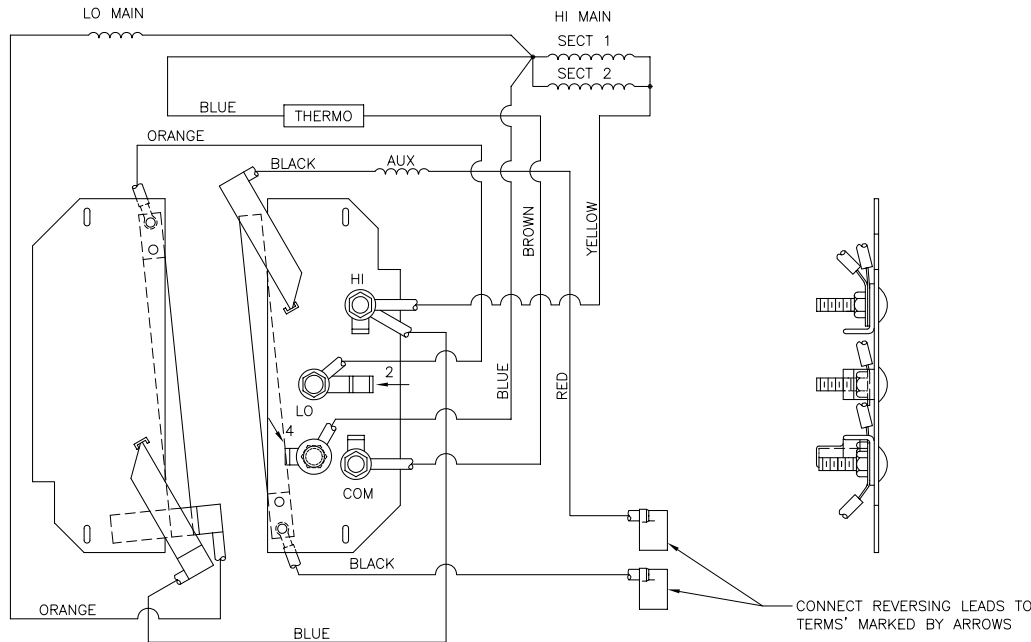
4

3

2

1

REVISION: B	ECN REFERENCIA:	PROYECTO REFERENCIA: 03401301	REVISADO POR: Liangz	FECHA: 09-18-2007	APROBADO POR: MArgue	FECHA: 10-04-2007
-------------	-----------------	-------------------------------	----------------------	-------------------	----------------------	-------------------



	CONNECT LINE AS FOLLOWS	
HIGH SPEED	TERMINAL HI & COM	
LOW SPEED	TERMINAL LO & COM	

-001	CCW	BLACK → 2
		RED → 4
-002	CW	RED → 2
		BLACK → 4

CARACTERISTICAS DE GEOMETRIA Y SIMBOLOS  
 ▽ PLANICIDAD  
 — RECTITUD  
 < ANGLARIDAD  
 ⊥ PERPENDICULARIDAD (A ESCUADRA)  
 // PARALELISMO  
 ○ REDONDEZ (CIRCULARIDAD)  
 ∅ CILINDRICIDAD  
 ~ PERFIL DE CUALQUIER SUPERFICIE  
 ~ PERFIL DE CUALQUIER LINEA  
 † VARIACION  
 ⊕ POSICION REAL  
 ⊙ CONCENRICIDAD  
 ⊖ SIMETRIA

A MENOS QUE SE ESPECIFIQUE DE OTRA MANERA, LAS TOLERANCIAS DE LAS DIMS: SON LAS SIGUIENTES:  
 PULG ±.1 ±.02 ±.005 ±.0005  
 mm ±0.5 ±0.13 ±0.013  
 ANG. ±50 GRADOS  
 ELIMINAR REBASAS Y ORILLAS FILOSAS DEL BORDE.  
 PULG .003-.015 mm 0.1-0.4  
 FILETEAR ESQUINA: PULG .020 mm 0.5  
 MAQUINAR SUPERFICIES  
 PULG .125 mm .32  
 DIMS METRICAS MOSTRADAS [PARENTESIS]

DIBUJADO POR: BLANKENSHIP 10/22/2004  
 APROBADO POR:  
 TERCER ANGULO DE PROYECCION  
 FECHA EDS: 01-21-2007  
 REV. FORMATO: E  
 CONFIDENCIAL: ESTE DIBUJO Y SU INFORMACION SON PROPIEDAD DE USO EXCLUSIVO Y CONFIDENCIAL DE A.O.SMITH CORP. Y NO DEBERAN SER REVELADOS. Duplicados, distribuidos o usarse de otra manera sin el consentimiento escrito de A.O. SMITH CORP. -TODOS LOS DERECHOS RESERVADOS.ASME Y14.5M 1994

**A.O. SMITH**  
 ELECTRICAL PRODUCTS COMPANY  
 A DIVISION OF A. O. SMITH CORPORATION  
 TYP 017, SHS  
 COPYRIGHT 1995  
 DESCRIPCION:  
**CONN DIAGRAM - EXTERNAL**  
 FR56  
 TAMAÑO: C NUMERO DE DIBUJO: 618164  
 ESCALA: NONE HOJA: 1

4

3

2

1

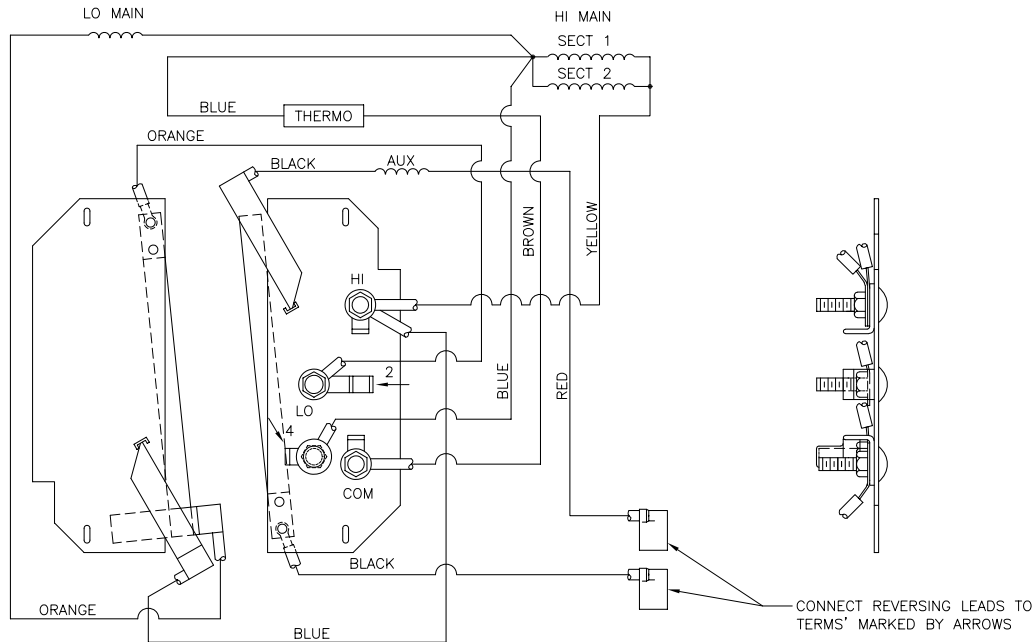
4

3

2

1

版本	更改通知号	项目号	编制	日期	批准	日期
B		03401301	Liangz	09-18-2007	MArgue	10-04-2007



	CONNECT LINE AS FOLLOWS	
HIGH SPEED	TERMINAL HI & COM	
LOW SPEED	TERMINAL LO & COM	

-001	CCW	BLACK → 2
		RED → 4
-002	CW	RED → 2
		BLACK → 4

- 形位公差
- 平面度
- 直线度
- ∠ 倾斜度
- ⊥ 垂直度
- ∥ 平行度
- 圆度
- ⊙ 圆柱度
- ⊘ 圆锥度
- ⊙ 线轮廓度
- ⊙ 面轮廓度
- ⊙ 圆跳动
- ⊙ 位置度
- ⊙ 同轴度
- ⊙ 对称度

除另有注明  
尺寸公差如下:

英寸	X	XX	XXX	XXXX
毫米	±.1	±.02	±.005	±.0005
角度	±.50 度			
清理毛刺和尖棱	按图			
英寸	.003-.015	毫米	0.1-0.4	
内圆角	按图			
英寸	.020	毫米	0.5	
表面粗糙度	按图			
英制	125	米制	3.2	

米制尺寸显示在 [ ]

绘图:	BLANKENSHIP	10/22/2004
批准:		
第三角投影		
图框格式发布日期	01-21-2007	
图框格式版本	E	
机密: 本图纸及相关信息所有权归A. O. SMITH公司所有。 未经A. O. SMITH公司书面授权, 不得泄露、复制或传播或作 其他用途。一版权所有		
ASME Y14.5M 1994		

ELECTRICAL PRODUCTS COMPANY TYPING UNIT	
A DIVISION OF A. O. SMITH CORPORATION COPYRIGHT 1995	
名称 <b>CONN DIAGRAM - EXTERNAL FR56</b>	
图幅	图号
C	618164
比例	页号
NONE	1

4

3

2

1