



BALDOR® • RELIANCE

Product Information Packet

P56X4109

.75HP,1740RPM,3PH,60HZ,56,3518M,XPNV,F1

Part Detail							
Revision:	P	Status:	PRD/A	Change #:		Proprietary:	No
Type:	AC	Prod. Type:	3518M	Elec. Spec:	35WGR170	CD Diagram:	CD0005
Enclosure:	XPNV	Mfg Plant:		Mech. Spec:	35W518	Layout:	35LYW518
Frame:	56	Mounting:	F1	Poles:	04	Created Date:	06-08-2007
Base:	RG	Rotation:	R	Insulation:	F	Eff. Date:	05-19-2016
Leads:	9#18					Replaced By:	
Literature:		Elec. Diagram:					

Dealers Industrial Equipment -- Visit <https://DealersElectric.com> or call (908) 688-1966 for all of your electric motor & VFD needs!

Nameplate NP1871L										
CAT.NO.	P56X4109									
SPEC.	35W518R170G1									
HP	.75									
VOLTS	230/460									
AMP	2.2/1.1									
RPM	1740									
FRAME	56				HZ	60			PH	3
SER.F.	1.15		CODE	K	DES		B	CLASS	F	
NEMA-NOM-EFF	84			PF	75					
RATING	40C AMB-CONT									
CC					USABLE AT 208V					
DE	6205				ODE	6203				
ENCL	XPNV		SN							
	SUPER E									

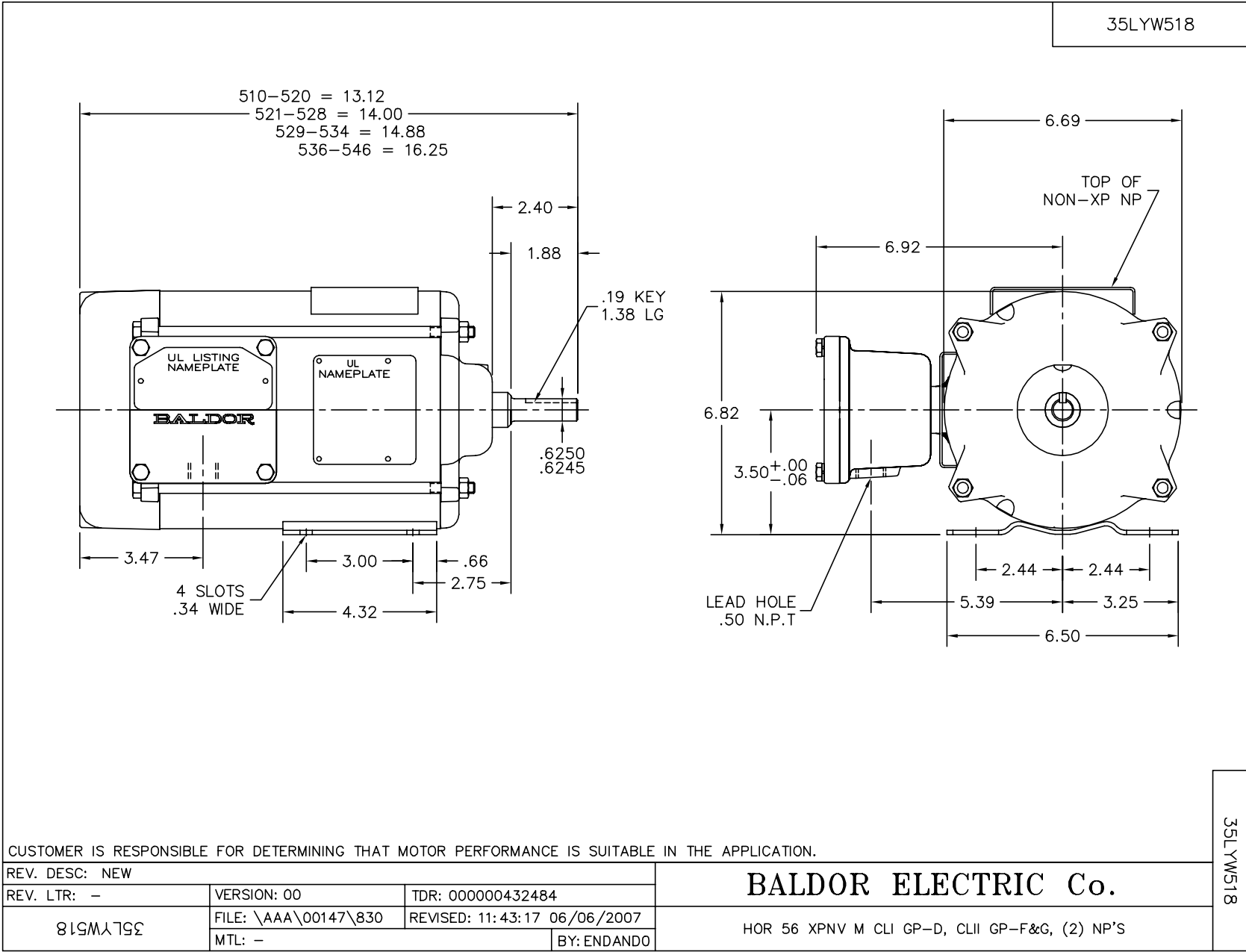
Nameplate NP1763XPSL				
NO.				
SPEC.	35W518R170G1			
XPNPCL1	I		XPNPGR1	D
XPNPCL2	II		XPNPGR2	F&G
XPNPCL3	I		XPNPZN3	I
XPNPTEMP	T3C		XPNPGR3	IIA
BLANK	P56X4109			
BLANK				

Parts List		
Part Number	Description	Quantity
SA158809	SA 35W518R170G1	1.000 EA
RA147440	RA 35W518R170G1	1.000 EA
35CB3001A01SP	EXPL CONDUIT BOX, MACH, 1/2" PIPE TAP LE	1.000 EA
11XW1032G06	10-32 X .38, TAPTITE II, HEX WSHR SLTD U	1.000 EA
HW3001B01	BRASS CUP WASHER, FOR #8 SCREW	1.000 EA
35EP1700A04	FRONT END PLATE TENV XPNV	1.000 EA
HW5100A03	WAVY WASHER (W1543-017)	1.000 EA
35EP3701A01	PU ENDPLATE, XPFC - 205 BRG	1.000 EA
XY3118A12	5/16-18 HEX NUT DIRECTIONAL SERRATION	4.000 EA
35CB3500A01SP	CONDUIT BOX LID, MACH	1.000 EA
51XN2520A16	SCREW, HEX WS SLT, ZN, 1/4-20 X 1.00	4.000 EA
HW2501D13	KEY, 3/16 SQ X 1.375	1.000 EA
HA7000A04	KEY RETAINER 0.625 DIA SHAFTS	1.000 EA
85XU0407S04	4X1/4 U DRIVE PIN STAINLESS	8.000 EA
NP0018F	ALUM UL XP CONDUIT BOX NAMEPLATE	1.000 EA
MJ1000A02	GREASE, POLYREX EM EXXON (USe 4824-15A)	0.050 LB
MG1025N19	PAINT, 778.50 WILKO, RELIANCE ELEC GREEN	0.017 GA
HA3104A06	THRUBOLT 5/16-18 X 8.50 OHIO ROD	4.000 EA
LC0145B01	CONNECTION LABEL	1.000 EA
LB1119N	WARNING LABEL	1.000 EA
NP1871L	SS NO LOGO'S CC AUXILLARY DATA	1.000 EA
NP1763XPSL	SS XP UL CSA AUXILIARY DATA	1.000 EA
36PA1000	PKG GRP, PRINT PK1016A06	1.000 EA
MN416A01	TAG-INSTAL-MAINT no wire (1200/bx) 11/14	1.000 EA

Parts List (continued)		
Part Number	Description	Quantity
LB1417	LABEL CARTON 6X4 PERFORATED BLANK ROLLS	1.000 EA

No performance data has been
assigned to this product.

Dealers Industrial Equipment -- Visit <https://DealersElectric.com> or call (908) 688-1966 for all of your electric motor & VFD needs!



Dealers Industrial Equipment -- Visit <https://DealersElectric.com> or call (908) 688-1966 for all of your electric motor & VFD needs!

