



# **BALDOR® • RELIANCE**

## **Product Information Packet**

### **P28L260**

**60HP, 1180RPM, 3PH, N/AHZ, L2898, TEBC,**

Part Detail			
Model Number:	P28L260	Environment:	General Purpose
Voltage:	460	Output:	60 HP
RPM:	1180/2300	Efficiency:	NA
Phase:	3	Frequency:	N/A
Inverter Duty:	Y	Enclosure:	TEBC
Frame Group:	280	Frame Size:	L2898
Features:	RPM AC	Mounting:	
Service Factor:	1	Enclosure Group:	TEBC
Weight:	0	Price Symbol:	RPMST
Speed Range:		Insulation Class:	H
Nema Design:	A	Encl. Enhancement:	P28L260
Catalog Page:	M-214	Dimension Sheet:	616759-1
Connection Diagram:	422927-1	Electric Design:	L1645A
Single HP:	60	Get Notes:	RPM AC
Revision:		Instruction Manual:	MN406
Application:	Variable Speed-V*S	Epact:	
Scaled Drawing:		Obsolete:	N
Last Data Source:	RGG	Bearing Type:	
Electrical Type:		Mounting Pos.:	
Ambient:	40	Duty:	
Amps:		Nominal Eff.:	
Kva Code:		Power Factor:	
Poles:	00	Literature:	

616759-001

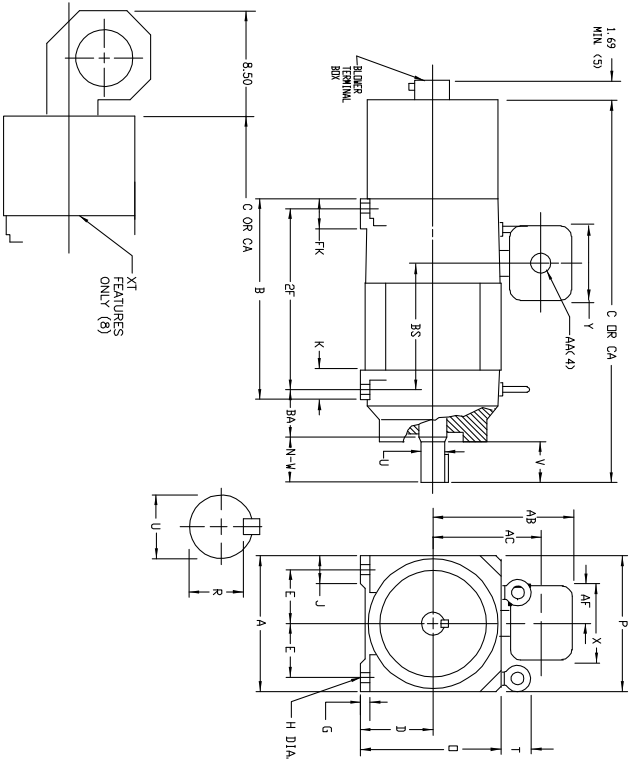
VARIABLE SPEED ALTERNATING CURRENT MOTORS  
RPM AC

ENCLOSURE: TOTALLY ENCLOSED  
MOUNTING: FOOT  
DRIVE METHOD: COUPLED OR BELTED

COOLING: BLOWER COOLED  
AIR-OVER INLINE

FRAMES L2882Z THRU UL2898Z

ACCESSORIES: PROVISIONS FOR  
TACHOMETER MOUNTING  
ONLY WHEN SPECIFIED



DIMENSIONS ARE IN INCHES

FRAME	A	DK1)	E	G	H	J	D	P	T	BA	K	FK
L2882Z THRU UL2898Z	13.81	7.00	5.50	.56	.56	2.75	14.00	13.94	3.06	4.75	2.56	6.88

FRAME	C	CA (6)	B	BS	ZF	DRIVE END SHAFT AND KEY			LGTH	W.T. LBS		
						N-W	UC2)	V				
ULAL2882Z	34.00	37.25	22.50	16.19	20.50	5.25	2.625	5.00	2.275	.625	4.00	756
ULAL2890Z	36.00	39.25	24.50	18.19	22.50	5.25	2.625	5.00	2.275	.625	4.00	900
ULAL2898Z	38.00	41.25	26.50	20.19	24.50	5.25	2.625	5.00	2.275	.625	4.00	1045

- (1) \*P\* DIMENSION WILL NOT BE EXCEEDED, SHIMS UP TO .03 INCHES IN THICKNESS
  - (2) \*R\* ARE USUALLY REQUIRED FOR COUPLED OR GEARED MACHINES.
  - (3) \*R\* MARKS -- +.000 - .015
  - (4) \*F\* FOR TERMINAL BOX DIMENSIONS \*AA\*, \*AB\*, \*AP\*, \*AV\*, \*S\*, \*S1\*, \*S2\*, \*S3\*, \*S4\*, \*S5\*, \*S6\*, \*S7\*, \*S8\*, \*S9\*, \*S10\*, \*S11\*, \*S12\*, \*S13\*, \*S14\*, \*S15\*, \*S16\*, \*S17\*, \*S18\*, \*S19\*, \*S20\*, \*S21\*, \*S22\*, \*S23\*, \*S24\*, \*S25\*, \*S26\*, \*S27\*, \*S28\*, \*S29\*, \*S30\*, \*S31\*, \*S32\*, \*S33\*, \*S34\*, \*S35\*, \*S36\*, \*S37\*, \*S38\*, \*S39\*, \*S40\*, \*S41\*, \*S42\*, \*S43\*, \*S44\*, \*S45\*, \*S46\*, \*S47\*, \*S48\*, \*S49\*, \*S50\*, \*S51\*, \*S52\*, \*S53\*, \*S54\*, \*S55\*, \*S56\*, \*S57\*, \*S58\*, \*S59\*, \*S60\*, \*S61\*, \*S62\*, \*S63\*, \*S64\*, \*S65\*, \*S66\*, \*S67\*, \*S68\*, \*S69\*, \*S70\*, \*S71\*, \*S72\*, \*S73\*, \*S74\*, \*S75\*, \*S76\*, \*S77\*, \*S78\*, \*S79\*, \*S80\*, \*S81\*, \*S82\*, \*S83\*, \*S84\*, \*S85\*, \*S86\*, \*S87\*, \*S88\*, \*S89\*, \*S90\*, \*S91\*, \*S92\*, \*S93\*, \*S94\*, \*S95\*, \*S96\*, \*S97\*, \*S98\*, \*S99\*, \*S100\*
  - (5) \*AA\*, \*AB\*, \*AP\*, \*AV\*, \*S\*, \*S1\*, \*S2\*, \*S3\*, \*S4\*, \*S5\*, \*S6\*, \*S7\*, \*S8\*, \*S9\*, \*S10\*, \*S11\*, \*S12\*, \*S13\*, \*S14\*, \*S15\*, \*S16\*, \*S17\*, \*S18\*, \*S19\*, \*S20\*, \*S21\*, \*S22\*, \*S23\*, \*S24\*, \*S25\*, \*S26\*, \*S27\*, \*S28\*, \*S29\*, \*S30\*, \*S31\*, \*S32\*, \*S33\*, \*S34\*, \*S35\*, \*S36\*, \*S37\*, \*S38\*, \*S39\*, \*S40\*, \*S41\*, \*S42\*, \*S43\*, \*S44\*, \*S45\*, \*S46\*, \*S47\*, \*S48\*, \*S49\*, \*S50\*, \*S51\*, \*S52\*, \*S53\*, \*S54\*, \*S55\*, \*S56\*, \*S57\*, \*S58\*, \*S59\*, \*S60\*, \*S61\*, \*S62\*, \*S63\*, \*S64\*, \*S65\*, \*S66\*, \*S67\*, \*S68\*, \*S69\*, \*S70\*, \*S71\*, \*S72\*, \*S73\*, \*S74\*, \*S75\*, \*S76\*, \*S77\*, \*S78\*, \*S79\*, \*S80\*, \*S81\*, \*S82\*, \*S83\*, \*S84\*, \*S85\*, \*S86\*, \*S87\*, \*S88\*, \*S89\*, \*S90\*, \*S91\*, \*S92\*, \*S93\*, \*S94\*, \*S95\*, \*S96\*, \*S97\*, \*S98\*, \*S99\*, \*S100\*
  - (6) USE \*Z\* OF DIMENSION WHEN TACHOMETER IS SPECIFIED
  - (7) REFERS TO BS 516779-10 (TEA-3D) FOR TACH CONNECTION DIMENSIONS
  - (8) DIMENSIONS FOR \*X1\* FEATURES ONLY.
- TERMINAL BOX CAN BE ROTATED IN 90 DEG. INCREMENTS.  
TERMINAL BOX MOUNTED ON TOP AS STANDARD  
TERMINAL BOX CAN BE LOCATED ON SIDE IN F1 OR F2 POSITION WHEN SPECIFIED  
MOUNTING DIMENSIONS ARE IN INCHES UNLESS OTHERWISE SPECIFIED  
AND/OR ACCESSORIES  
IF MOUNTING CLEARANCE DETAILS ARE REQUIRED, CONSULT FACTORY.  
FRAME PREFIX UL = ROLLER BEARINGS  
FRAME PREFIX L = BALL BEARINGS

CUSTOMER IS RESPONSIBLE FOR DETERMINING THAT BALDOR'S PRODUCT WILL PERFORM SUITABLY IN THE INTENDED APPLICATION.

REV. DESC: ASSIGNED TO BUSLOAD	VERSION: 00	TDR: 000000486942
REV. LTR: -	REVISED: 10:53:24 01/09/2009	BY: CONBAT
FILE: \RGG\00003\676		
MTL: -		

**Baldor • Dodge • Reliance**

DIM SHT L2882Z THRU UL2898Z RPM AC TEBC AO INLINE FT MTG

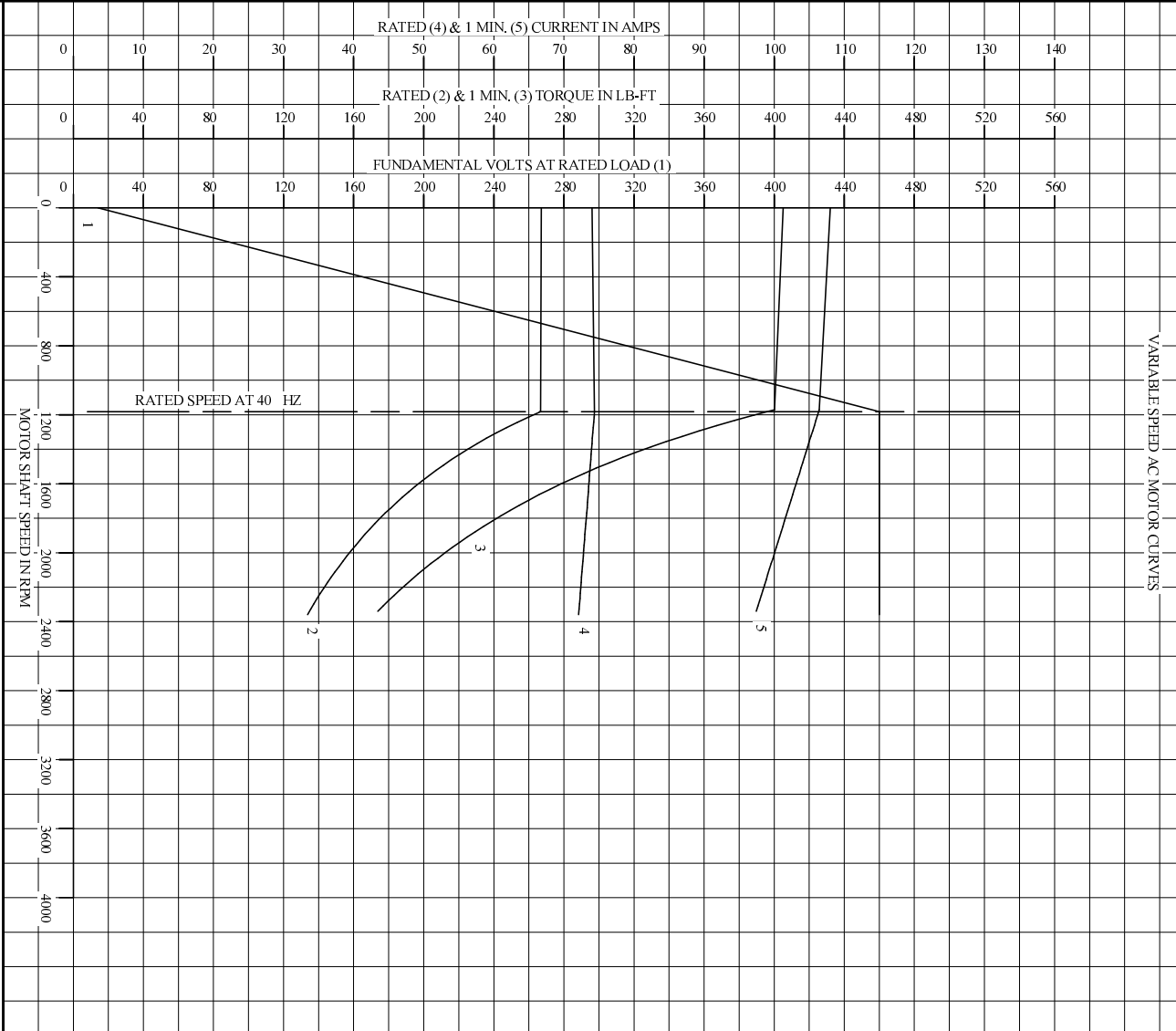
SH 1 of 1

FRAME: \_\_\_\_\_ TYPE: \_\_\_\_\_ CERTIFIED FOR: \_\_\_\_\_  
 ORDER: \_\_\_\_\_ ITEM: \_\_\_\_\_ HP: \_\_\_\_\_ RPM: \_\_\_\_\_ APPROVED BY: \_\_\_\_\_  
 SALES ORDER: \_\_\_\_\_ DATE: \_\_\_\_\_ VOLTS: \_\_\_\_\_

100-697919



REL. S.O.	-	VOLTS	460	ENCLOSURE	TEBC	WYE CONN EQ CKT OHMS PER PHASE
FRAME	L2898	AMPS	74	MAX SAFE RPM	5000	(AT BASE RATING, 25 °C)
HP	60	DUTY	CONT	IM (AMPS)	33	R1 .0596 X1 .289
BASE SPEED	1180	S.F.	1.0	P.F. @NL/FL	.056/.830	R2 .0445 X2 .396
PHASE/HERTZ	3/40	AMB C/INSUL	40/H	WK <sup>2</sup> (LB-FT <sup>2</sup> )	11.1	XN 7.98



REMARKS: TYPICAL DATA  
DATA VALID FOR NAMEPLATE SPEED RANGE ONLY

**BALDOR**  
BALDOR • DODGE • RELIANCE

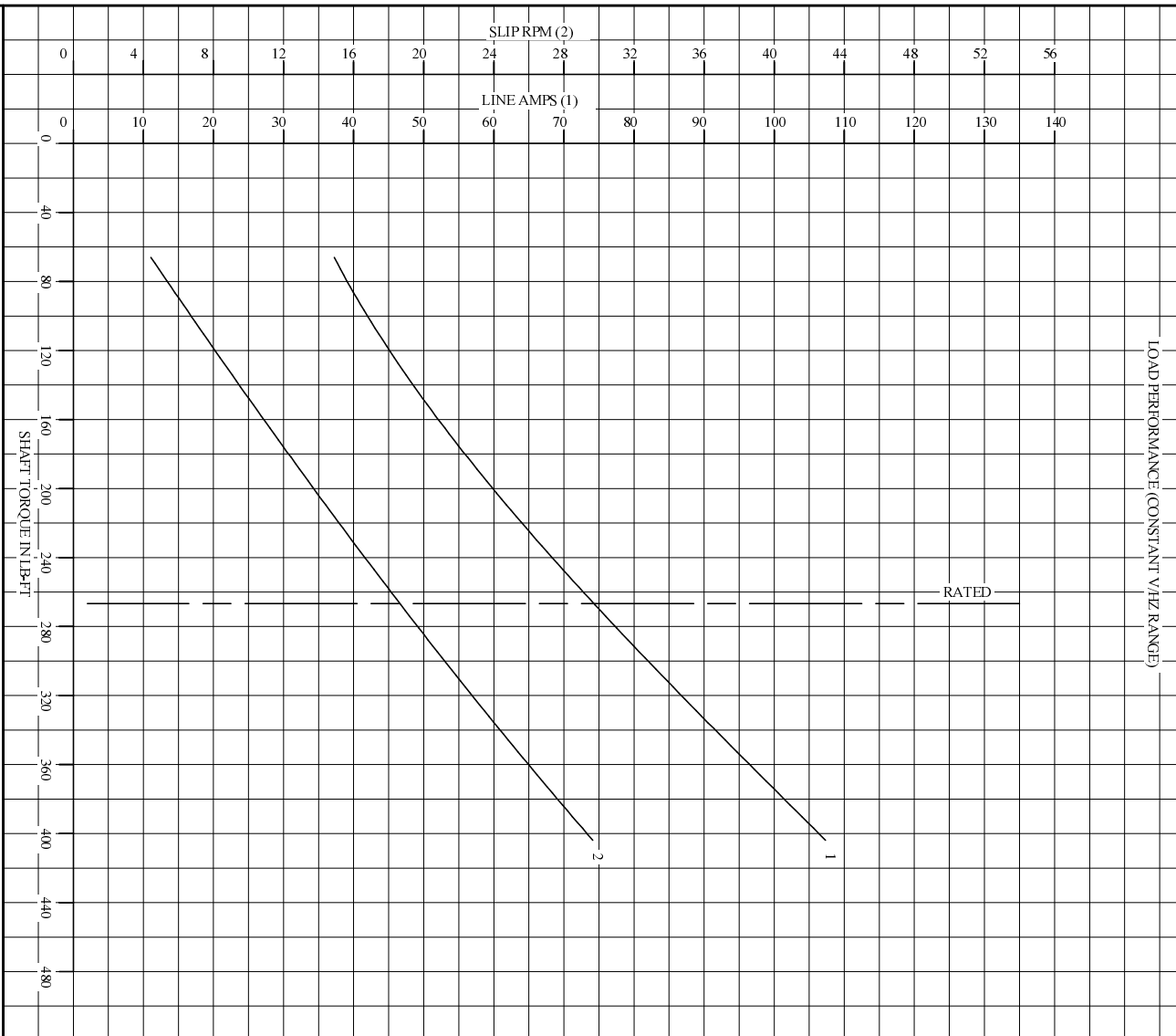
DR. BY M. GRADERS  
CK. BY B. GRANT  
APP. BY T. EVON  
DATE 12/10/99

**A-C MOTOR PERFORMANCE CURVES**

L1645A  
SHEET OF 2  
ISSUE DATE 12/10/99

1

REL S.O.	-	VOLTS	460	ENCLOSURE	TEBC	WYE CONN EQ CKT OHMS PER PHASE
FRAME	L2898	AMPS	74	MAX SAFE RPM	5000	(AT BASE RATING, 25 °C)
HP	60	DUTY	CONT	IM (AMPS)	33	R1 .0596 X1 .289
BASE SPEED	1180	S.F.	1.0	P.F.@NL/FL	.056/.830	R2 .0445 X2 .396
PHASE/HERTZ	3/40	AMB C/INSUL	40/H	WK <sup>2</sup> (LB-FT <sup>2</sup> )	11.1	XM 7.98



REMARKS: TYPICAL DATA  
DATA VALID FOR NAMEPLATE SPEED RANGE ONLY

 BALDOR • DOUG • RELIANCE	DR. BY	M. ORDERS	<b>A-C MOTOR</b> <b>PERFORMANCE</b> <b>CURVES</b>	L1645A SH20F2 ISSUE DATE 12/10/99
	CK. BY	B. GRANT		
	APP. BY	T. EVON		
	DATE	12/10/99		

Dealers Industrial Equipment -- Visit <https://DealersElectric.com> or call (908) 688-1966 for all of your electric motor & VFD needs!