



BALDOR® • RELIANCE

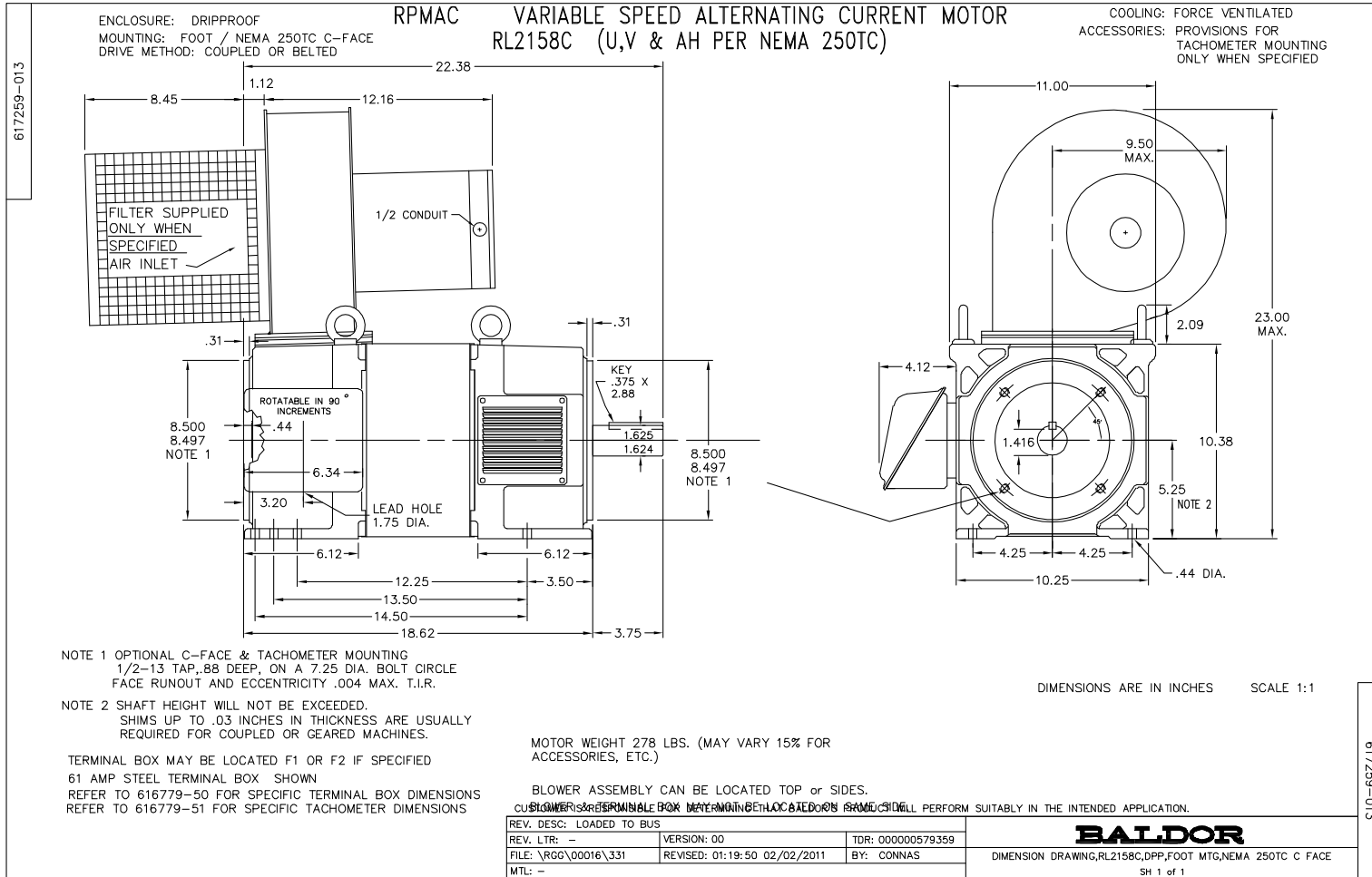
Product Information Packet

P21R327

30HP, 1750RPM, 3PH, N/AHZ, 2158C, DPG-FV,

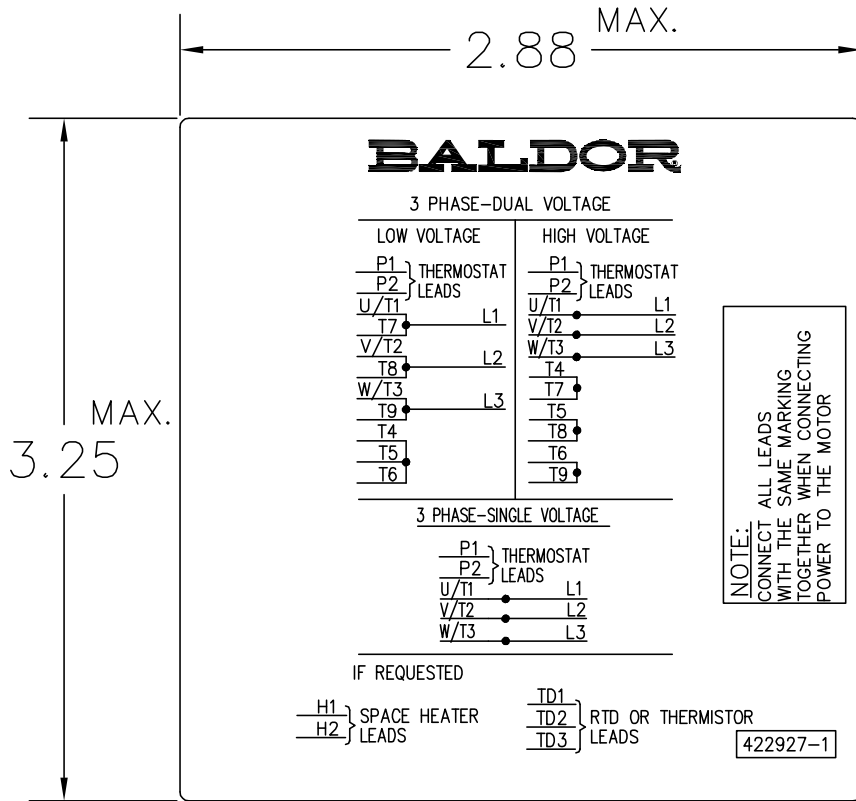
Part Detail			
Model Number:	P21R327	Environment:	General Purpose
Voltage:	460	Output:	30 HP
RPM:	1750/2700	Efficiency:	NA
Phase:	3	Frequency:	N/A
Inverter Duty:	Y	Enclosure:	DPG-FV
Frame Group:	210	Frame Size:	RL2158C
Features:	RPM AC	Mounting:	
Service Factor:	1	Enclosure Group:	DPG-FV
Weight:	0	Price Symbol:	RPMST
Speed Range:		Insulation Class:	H
Nema Design:	A	Encl. Enhancement:	P21R327
Catalog Page:	M-213	Dimension Sheet:	617259-13
Connection Diagram:	422927-1	Electric Design:	L1711A
Single HP:	30	Get Notes:	RPM AC
Revision:		Instruction Manual:	MN406
Application:	Variable Speed-V*S	Epact:	
Scaled Drawing:		Obsolete:	N
Last Data Source:	RGG	Bearing Type:	
Electrical Type:		Mounting Pos.:	
Ambient:	40	Duty:	
Amps:		Nominal Eff.:	
Kva Code:		Power Factor:	
Poles:	00	Literature:	

Dealers Industrial Equipment -- Visit <https://DealersElectric.com> or call (908) 688-1966 for all of your electric motor & VFD needs!



Dealers Industrial Equipment -- Visit <https://DealersElectric.com> or call (908) 688-1966 for all of your electric motor & VFD needs!

422927-001



NOTE:
DATA TO BE SIZED
SO THAT IT FITS INTO
MATERIAL DECAL
DIMENSIONS. MAKE
LETTERS & NUMBERS
AS LARGE AS POSSIBLE.

MATERIAL: CERAMATIC DGF-P4
PERMA GRIP ADHESIVE

ALL LETTERS, NUMBERS
AND LINES TO BE BLACK
ON WHITE BACKGROUND.

NOTE:
CONNECT ALL LEADS
WITH THE SAME MARKING
TOGETHER WHEN CONNECTING
POWER TO THE MOTOR

422927-1

422927-001

REV. DESC: CHANGE BACKGROUND COLOR FROM GOLD TO WHITE		
REV. LTR: B	VERSION: 02	TDR: 00000788708
FILE: \RGG\00000\203	REVISED: 08:09:29 03/04/2013	
MTL: -	BY: RGGWT	

BALDOR

EXTERNAL CONNECTION LABEL
SH 1 of 1

REL. S.O.	-	VOLTS	460	ENCLOSURE	DPFV	WYE CONN EQ CKT OHMS PER PHASE
FRAME	L2158	AMPS	39	MAX SAFE RPM	5000	(AT BASE RATING, 25 °C)
HP	30	DUTY	CONT	IM (AMPS)	17	R1 .183 X1 .830
BASE SPEED	1750	S.F.	1.0	P.F.@NL/FL	.091/.840	R2 .124 X2 .747
PHASE/HERTZ	3/60	AMB °C/INSUL	40/H	WK ² (LB-FT ²)	1.69	XM 16.9

RATED FULL LOAD DATA


	RPM	HP	TORQUE LB-FT	FUND VOLTS	FREQ-HZ	AMPS
BASE SPEED	1751	30.0	90	460	60	38.4
MAX SPEED	2701	30.0	58	460	92.7	36.7
MIN SPEED	0	0	0	23.3	1.63	39.0

LOAD PERFORMANCE AT BASE SPEED

	RPM	HP	TORQUE LB-FT	FUND VOLTS	FREQ-HZ	AMPS
NO LOAD	1800	0	0	460	60	15.9
1/4	1789	7.53	22	460	60	18.4
1/2	1777	15.0	44	460	60	23.6
3/4	1765	22.5	67	460	60	30.5
FULL LOAD	1751	30.0	90	460	60	38.4
O/L	1719	44.2	135	460	60	56.7

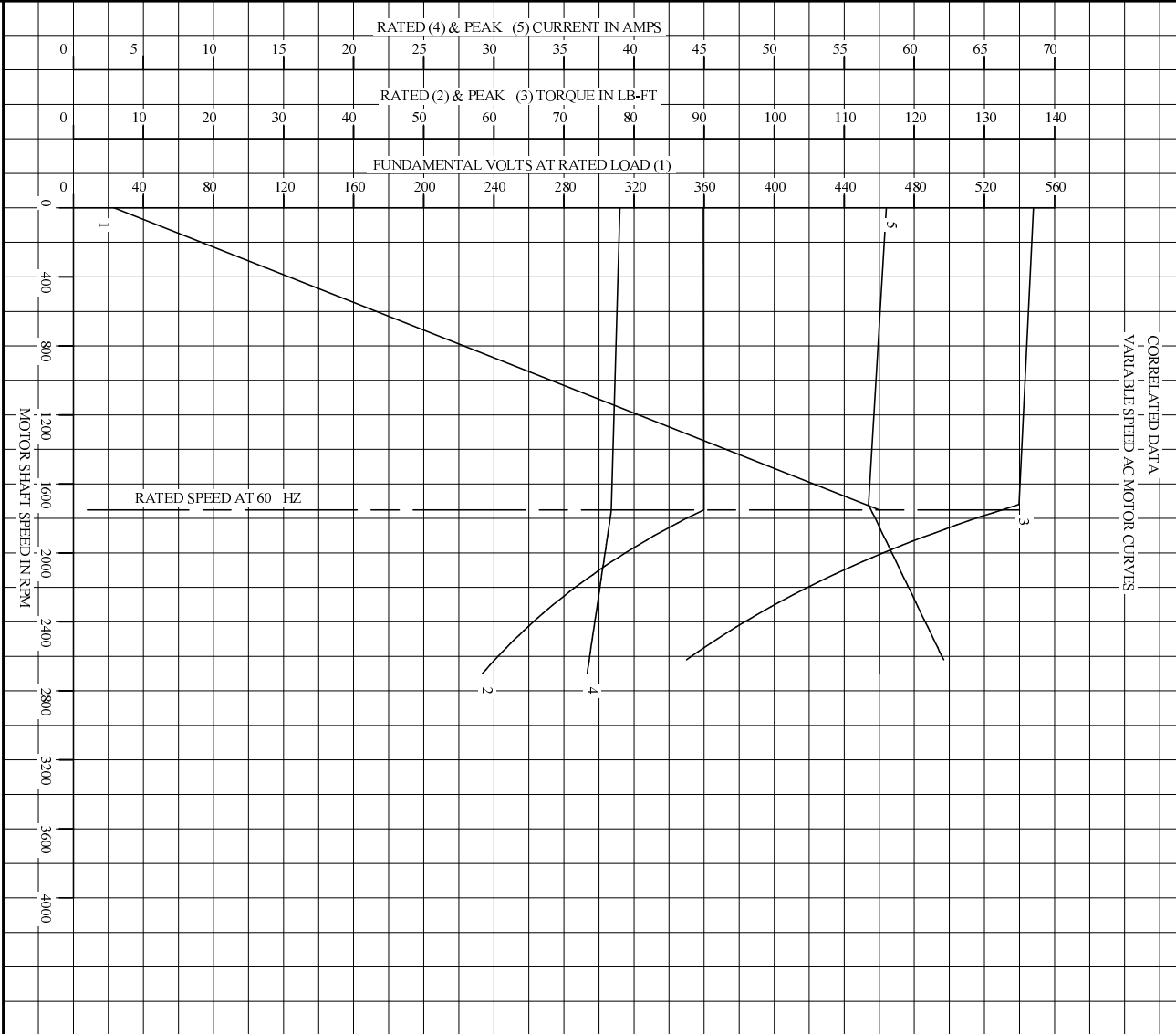
BLOWER DATA	VOLTS	PH/HZ	FL AMPS	LR AMPS	FRAME	CFM

REMARKS: TYPICAL DATA
CORRELATED DATA

	DR. BY	B. GRANT	A-C MOTOR PERFORMANCE DATA
	CK. BY	B. GRANT	
	APP. BY	T. EVON	
	DATE	1-21-00	

ISSUE DATE 1-21-00

REL. S.O.	-	VOLTS	460	ENCLOSURE	DPFV	WYE CONN EQ CKT OHMS PER PHASE
FRAME	I2158	AMPS	39	MAX SAFE RPM	5000	(AT BASE RATING, 25 °C)
HP	30	DUTY	CONT	IM (AMPS)	17	R1 .183 X1 .830
BASE SPEED	1750	S.F.	1.0	P.F.@NL/FL	.091/.840	R2 .124 X2 .747
PHASE/HERTZ	3/60	AMB C/INSUL	40/H	WK ² (LB-FT ²)	1.69	XM 16.9



REMARKS:
 TYPICAL DATA
 DATA VALID FOR NAMEPLATE SPEED RANGE ONLY

BALDOR • DOUGLASS • RELIANCE

DR. BY	B. GRANT
CK. BY	B. GRANT
APP. BY	T. EVON
DATE	1-21-00

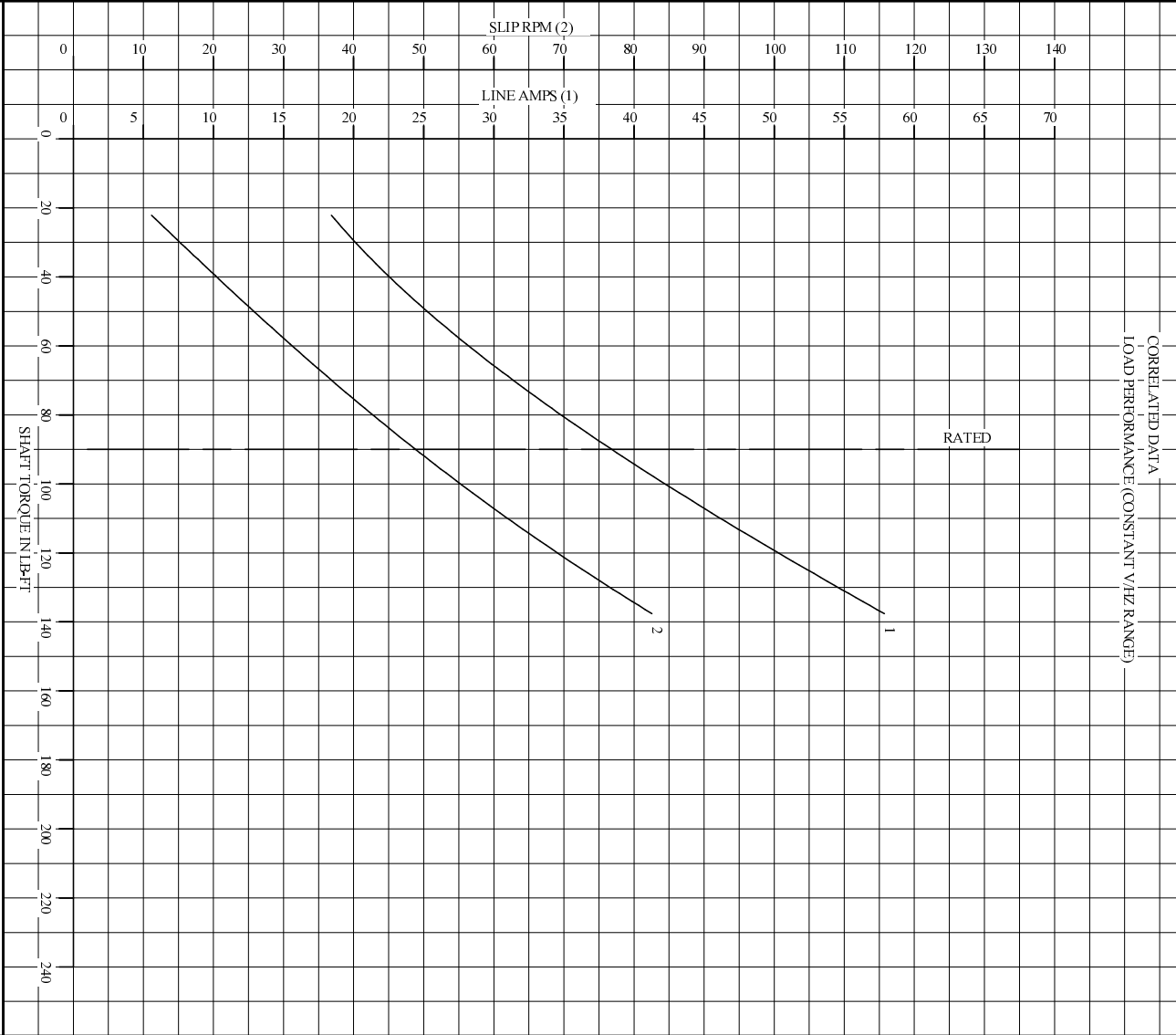
A-C MOTOR PERFORMANCE CURVES

LI711A
 SH1 OF 2
 ISSUE DATE 1-21-00

Dealers Industrial Equipment -- Visit <https://DealersElectric.com> or call (908) 688-1966 for all of your electric motor & VFD needs!

1

REL. S.O.	-	VOLTS	460	ENCLOSURE	DPFV	WYE CONN EQ CKT OHMS PER PHASE
FRAME	I2158	AMPS	39	MAX SAFE RPM	5000	(AT BASE RATING, 25°C)
HP	30	DUTY	CONT	IM (AMPS)	17	R1 .183 X1 .830
BASE SPEED	1750	S.F.	1.0	P.F.@NL/FL	.091/.840	R2 .124 X2 .747
PHASE/HERTZ	3/60	AMB C/INSUL	40/H	WK ² (LB-FC ²)	1.69	XN 16.9



REMARKS: TYPICAL DATA
DATA VALID FOR NAMEPLATE SPEED RANGE ONLY

BALDOR	DR. BY	B. GRANT
RELIANCE	CK. BY	B. GRANT
	APP. BY	T. EVON
	DATE	1-21-00

A-C MOTOR PERFORMANCE CURVES

L1711A
SH20F2
ISSUE DATE 1-21-00

Dealers Industrial Equipment -- Visit <https://DealersElectric.com> or call (908) 688-1966 for all of your electric motor & VFD needs!