



BALDOR® • RELIANCE

Product Information Packet

34G955X493G1

.5HP, 1700RPM, 1PH, 60HZ, D71C, 3428C, TEFC, F2

Part Detail							
Revision:	J	Status:	INA/A	Change #:		Proprietary:	No
Type:	AC	Prod. Type:	3428C	Elec. Spec:	34WGX493	CD Diagram:	CD0042
Enclosure:	TEFC	Mfg Plant:		Mech. Spec:	34G955	Layout:	34LYG955
Frame:	D71C	Mounting:	F2	Poles:	04	Created Date:	
Base:	N	Rotation:	R	Insulation:	F	Eff. Date:	09-23-2015
Leads:	3#18					Replaced By:	
Literature:		Elec. Diagram:					

Nameplate NP1257L	
CAT.NO.	
SPEC.	34G955X493G1
HP	.5
VOLTS	115
AMP	5.2
RPM	1700
FRAME	D71C
HZ	60
PH	1
SER.F.	1.00
CODE	C
DES	-
CL	F
NEMA-NOM-EFF	
PF	
RATING	40C AMB-CONT
CC	
USABLE AT 208V	
DE	6203
ODE	6203
ENCL	TEFC
SN	

Dealers Industrial Equipment -- Visit <https://DealersElectric.com> or call (908) 688-1966 for all of your electric motor & VFD needs!

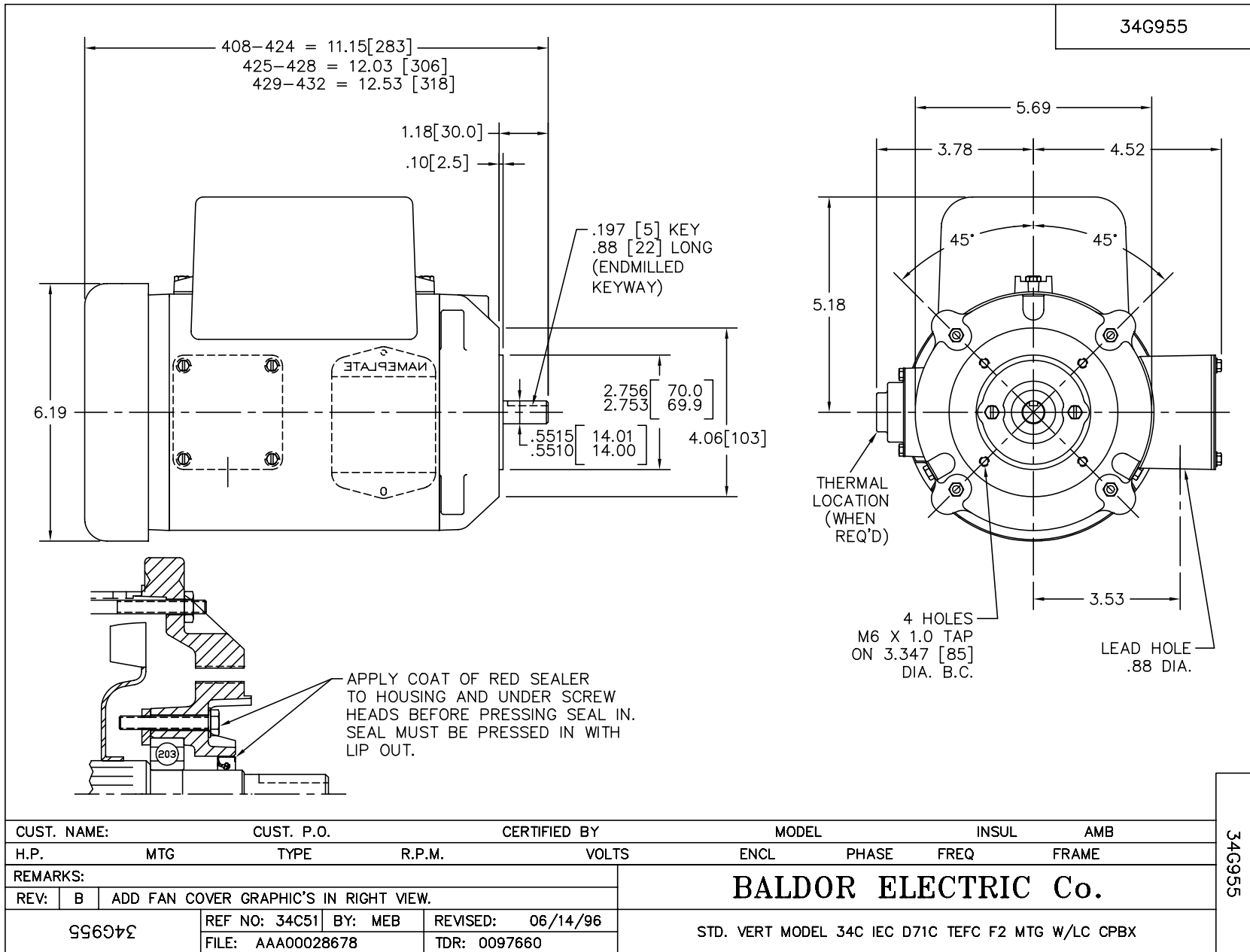
Parts List		
Part Number	Description	Quantity
SA009572	SA 34G955X493G1	1.000 EA
RA006019	RA 34G955X493G1	1.000 EA
OC3040F09SP	CYL OIL CAP 40MFD/370V	2.000 EA
NS2512A01	INSULATOR, CONDUIT BOX X	1.000 EA
34CB3002A	CB CAST W/.88 DIA HOLE	1.000 EA
34GS1029A01	GASKET, CONDUIT BOX	1.000 EA
51XB1016A07	10-16 X 7/16 HXWSSLD SERTYB	2.000 EA
11XW1032G06	10-32 X .38, TAPTITE II, HEX WSHR SLTD U	1.000 EA
34EP3102A01SP	FR ENDPLATE, MACH	1.000 EA
34CB3801	CAPACITOR BOX, DIE CAST	1.000 EA
34GS3002	GASKET, CAPACITOR BOX	1.000 EA
51XB1214A08	12-14 X 1/2HX WS SL SR TYBX	2.000 EA
HW5100A03	WAVY WASHER (W1543-017)	1.000 EA
34EP1503A07P	PU ENDPLATE, MACH/PAINTED	1.000 EA
51XN1032A20	10-32 X 1 1/4 HX WS SL SR	2.000 EA
XY1032A02	10-32 HEX NUT DIRECTIONAL SERRATION	4.000 EA
34FN3002A01SP	EXTERNAL FAN, PLASTIC, .637/.639 HUB W/	1.000 EA
34FH4002A01	IEC FH NO GREASER PRIMED	1.000 EA
51XW1032A06	10-32 X .38, TAPTITE II, HEX WSHR SLTD S	3.000 EA
34CB4517	CB LID 4 MTG HOLES .22 DIA STAMPED, FOR	1.000 EA
34GS1031A01	GASKET, FLAT CONDUIT BOX LID (LEXIDE)	1.000 EA
51XW0832A07	8-32 X .44, TAPTITE II, HEX WSHR SLTD SE	4.000 EA
HW2504D08	KEY, 5 MM X .875	1.000 EA
HA7000A10	KEY RETAINER 0.563 DIA SHAFTS	1.000 EA

Parts List (continued)		
Part Number	Description	Quantity
HW4600A54	SEAL 0.668 X 1.064 X 0.250 DOUBLE SHIELD	1.000 EA
MJ5001A27	32220KN GRAY SEALER *MIN BUY 4 QTS=1GAL	0.001 QT
10XF0440S02	04-40 X 1/8 TYPE F HEX HD STAINLESS STIC	4.000 EA
HA3100A45	THRUBOLT 10-32 X 8.875	4.000 EA
MG1000W07	681.99 LACQUER BLACKFRIARS WHITE LHAPS	0.014 GA
MN416A01	TAG-INSTAL-MAINT no wire (1200/bx) 11/14	1.000 EA
LB1118	LABEL,WARNING (ROLL LABEL)	1.000 EA
LC0500	TYPE C OR L, SV, 3 LEAD REVERSIBLE, WITH	1.000 EA
NP1257L	ALUM UL CSA CC THERMAL REV MTG	1.000 EA
PK3083T	STYROFOAM PACKING CRADLE W/TAPE	1.000 EA
35PA1000	PKG GRP, PRINT PK1008A06	1.000 EA
LB1417	LABEL CARTON 6X4 PERFORATED BLANK ROLLS	1.000 EA

Dealers Industrial Equipment -- Visit <https://DealersElectric.com> or call (908) 688-1966 for all of your electric motor & VFD needs!

No performance data has been assigned to this product.

Dealers Industrial Equipment -- Visit <https://DealersElectric.com> or call (908) 688-1966 for all of your electric motor & VFD needs!



Dealers Industrial Equipment -- Visit <https://DealersElectric.com> or call (908) 688-1966 for all of your electric motor & VFD needs!

