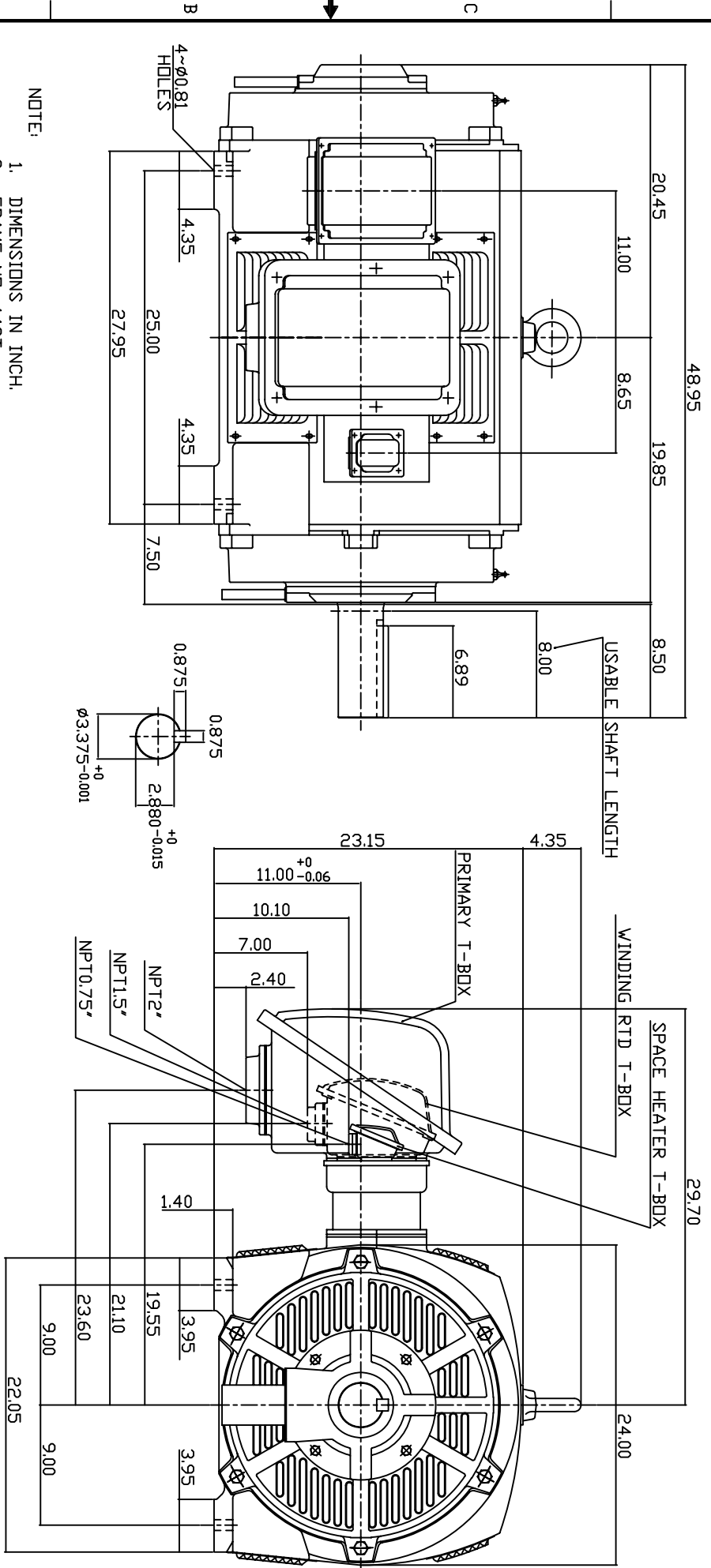


TYPE	OUTPUT		POLE	TIME RATING	VOLTAGE V	Hz	SYN.SPEED R.P.M
	HP.	KW.					
ASHA	150	112	6	CDNT.	2300/4160	60	1200

WEATHER PROTECTED TYPE I, SQUIRREL-CAGE ROTOR



NOTE:

1. DIMENSIONS IN INCH.
2. FRAME NO. 449T
3. F CLASS INSULATION, S.F.115
4. FOR DIRECT DRIVE APPLICATIONS
5. WITH SPACE HEATER 120 VOLT SINGLE PHASE 200 WATTS
6. 100 OHM PLATINUM WINDING RTD'S 2/PHASE
7. BEARING SIZE: DRIVE END: 6320 NON-DRIVE END: 6318
8. MOTOR APPROX. WEIGHT: 2200 LBS

TV-56C

DWN.	W.LLIN	APR. 14 2003
CHKD.	W.LLIN	APR. 14 2003
APPD.	C.WANG	APR. 14 2003

DATE	OUTLINE DIMENSIONS
MAY 5, 2004	3-PHASE INDUCTION MOTOR
CATALOG NO. P1506	

TEC Westinghouse DWG NO. 3A040T3721 REV. 00