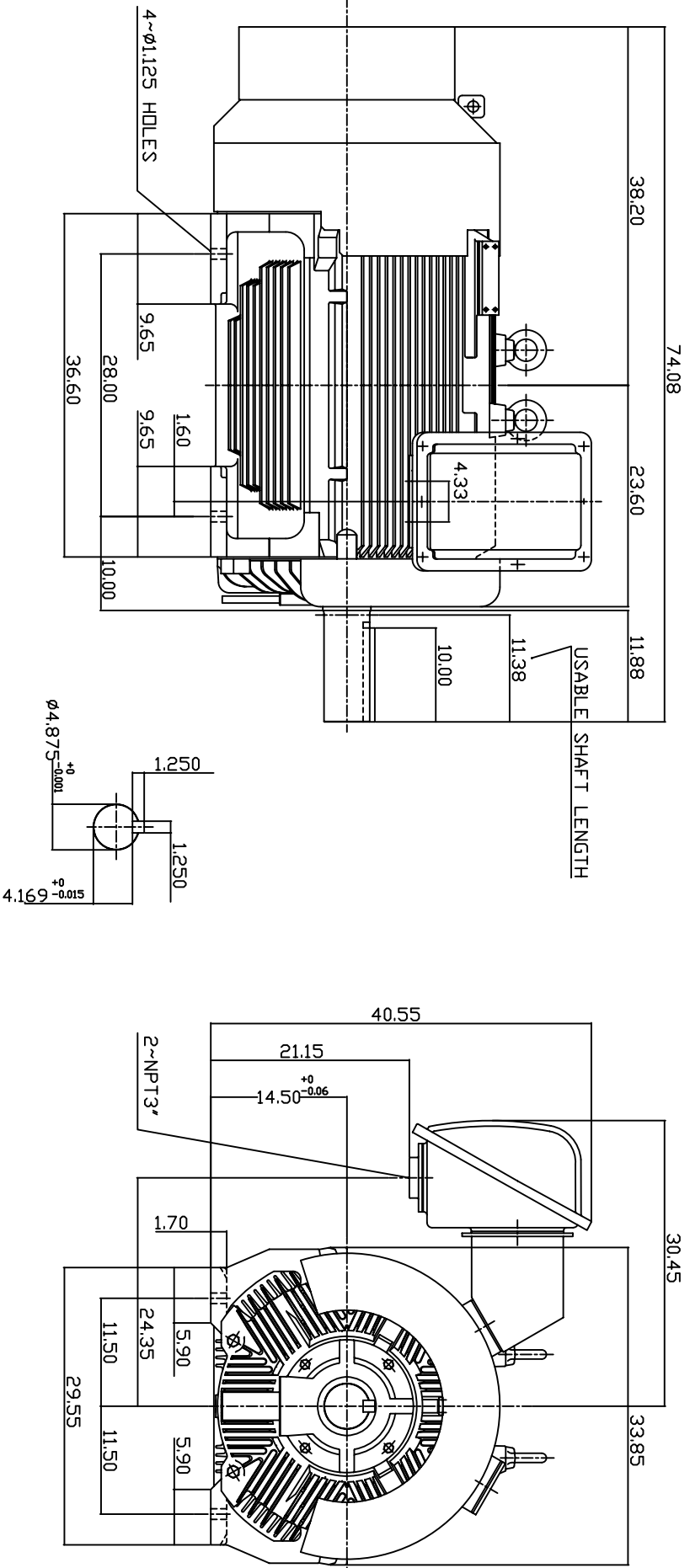


TYPE	OUTPUT		POLE	TIME RATING	VOLTAGE	Hz	SYN SPEED R.P.M
	HP.	KW.					
AEHE	450.	336	8	CONT.	380	50	750

TOTALLY ENCLOSED FAN-COOLED TYPE, SQUIRREL-CAGE ROTOR



NOTE:

1. DIMENSIONS IN INCH.
2. FRAME NO. 5808C
3. F CLASS INSULATION, S.F.1.0
4. FDR BELT DRIVE APPLICATIONS
5. BEARING SIZE: DRIVE END: NU326  
NON-DRIVE END: 6322
6. MOTOR APPROX. WEIGHT: 5450 LBS

TW-66C

DWN.	W.LLIN	MAR-04-2003
CHKD.	W.LLIN	MAR-04-2003
APPD.	C.WANG	MAR-04-2003

DATE	APRIL 26, 2004	OUTLINE DIMENSIONS
CATALOG NO.	E4508R-50	
3-PHASE INDUCTION MOTOR		DWG NO.
3A040T184-2		REV: 00



3A040T184-2