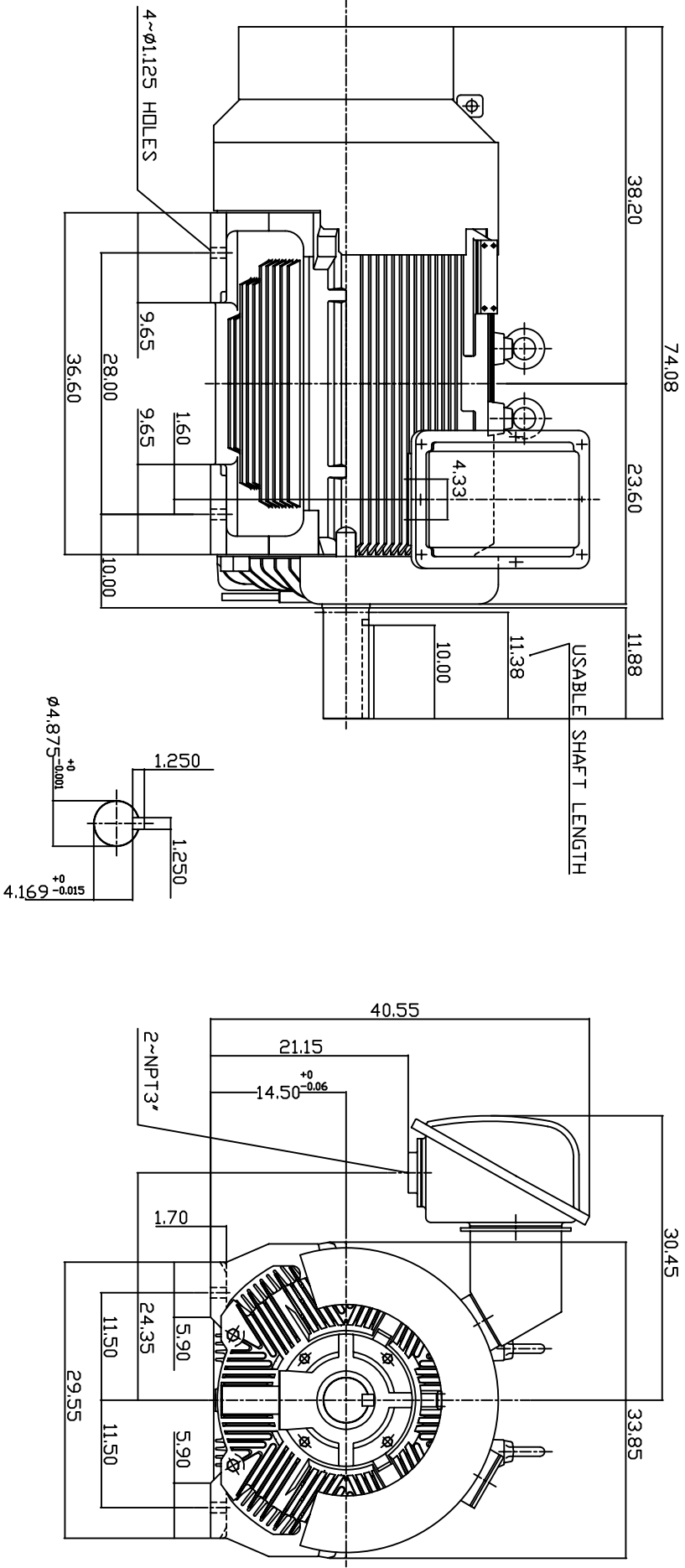


TYPE	OUTPUT		POLE	TIME RATING	VOLTAGE	Hz	SYN SPEED R.P.M
	HP.	KW.					
AEHE	400	298	8	CONT.	380	50	750

TOTALLY ENCLOSED FAN-COOLED TYPE, SQUIRREL-CAGE ROTOR



- NOTE:
1. DIMENSIONS IN INCH.
 2. FRAME NO. 5808B
 3. F CLASS INSULATION, S.F.1.0
 4. FDR DIRECT DRIVE APPLICATIONS
 5. BEARING SIZE: DRIVE END: 6326
NON-DRIVE END: 6322
 6. MOTOR APPROX. WEIGHT: 5100 LBS

DWN.	W.LLIN	MAR-04-2003	DATE	APRIL 26, 2004
CHKD.	W.LLIN	MAR-04-2003	CATALOG NO.	E4008-50
APPD.	C.WANG	MAR-04-2003	OUTLINE DIMENSIONS	

TW-66C

TEC Westinghouse

3-PHASE INDUCTION MOTOR

DWG NO. 3A040T184

REV: 00