

BALDOR® • RELIANCE 

Product Information Packet
DEALERS IND EQPT LLC

35P1005Z592

1HP,1750RPM,DC,56,3535D,TENV,F1,N

Part Detail							
Revision:	D	Status:	INA/A	Change #:		Proprietary:	No
Type:	DC	Prod. Type:	3535D	Elec. Spec:	35WGZ592	CD Diagram:	CD0860B01
Enclosure:	TENV	Mfg Plant:		Mech. Spec:	35P1005	Layout:	35LYP1005
Frame:	56	Mounting:	F1	Poles:	00	Created Date:	08-08-2008
Base:	RG	Rotation:	R	Insulation:	H	Eff. Date:	09-24-2015
Field Type:	Shunt	Literature:		Elec. Diagram:		Replaced By:	

Specs			
Enclosure:	TENV		
Frame:	56		
Agency Approvals:	CSA		
	UR		
Base Indicator:	Rigid		
Bearing Grease Type:	Polyrex EM (-20F +300F)		
Drip Cover:	No Drip Cover		
Duty Rating:	60 MIN		
Feedback Device:	NO FEEDBACK		
Field Winding Type:	SHUNT		
Heater Indicator:	No Heater		
Lifting Lugs:	No Lifting Lugs		
Motor Lead Quantity/Wire Size:	2 @ 14 AWG		
	2 @ 18 AWG		
Motor Lead Exit:	Ko Box		
Motor Lead Termination:	Flying Leads		

Dealers Industrial Equipment -- Visit <https://DealersElectric.com> or call (908) 688-1966 for all of your electric motor & VFD needs!

Mounting Arrangement:	F1		
Pulley End Bearing Type:	Sealed Bearing		
RoHS Status:	ROHS COMPLIANT		
Shaft Extension Location:	Pulley End		
Shaft Ground Indicator:	No Shaft Grounding		
Shaft Rotation:	Reversible		
Shaft Slinger Indicator:	No Slinger		
Motor Standards:	NEMA		

Nameplate NP0111L	
CAT.NO.	
SPEC.	35P1005Z592
HP	1
RPM	1750
FRAME	56
ARM V	180
FLD V	200
INSUL	H
DUTY	60 MIN
BRG/DE	6205
BRUSHES	2/BP5000BA15
SER.	
BLANK	
APRV-CSA	<input type="checkbox"/>
APRV-UL	<input type="checkbox"/>

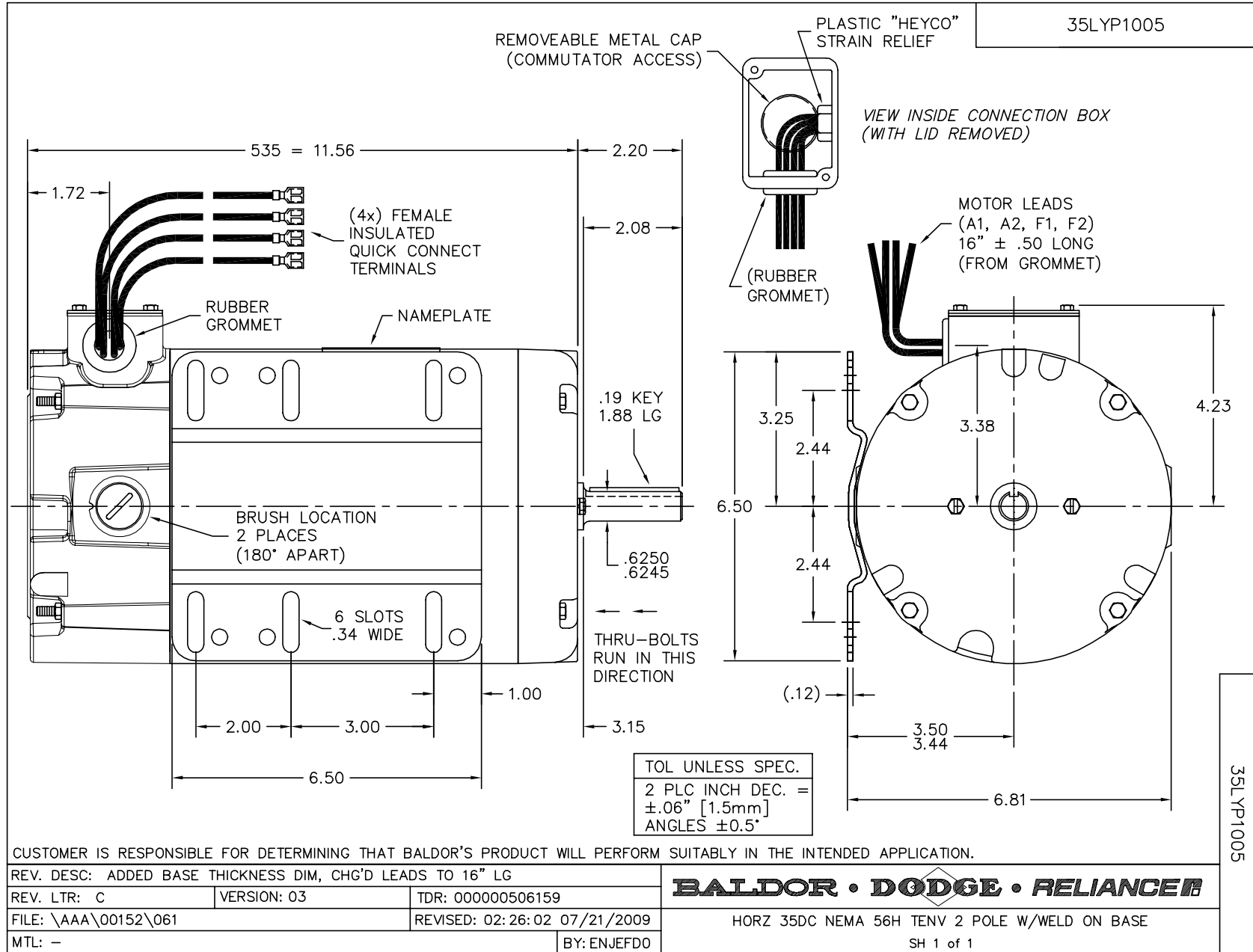
ENCL	TENV
TYPE	3535D
ARM A	5.3
FLD A	.3
AMB.	40
SUPPLY	K
BRG/ODE	6203
BLANK	

Parts List		
Part Number	Description	Quantity
SA174191	SA 35P1005Z592	1.000 EA
AA013484	AA 35P1005Z592	1.000 EA
MH2001A01B19	GLASTIC SHEET .093 X 1.188 X	0.126 LB
BP5000BA15SP	CARBON BRUSH-35P, 180 VOLTS	1.000 EA
11XW1032G06	10-32 X .38, TAPTITE II, HEX WSHR SLTD U	1.000 EA
HW3001B01	BRASS CUP WASHER, FOR #10 SCREW	1.000 EA
35EP3105A11	FR ENDPLATE ASSY	1.000 EA
HW5100A03	WAVY WASHER (W1543-017)	1.000 EA
35EP3123C00	SPL PU EP 205 BRG LOCKED BEARING	1.000 EA
51XN1032A20	10-32 X 1 1/4 HX WS SL SR	2.000 EA
80XN1032A03	10-32 X 3/16 SET SCREW	2.000 EA
BP5201A14SP	BRUSH HOLDER ASSY	1.000 EA
MJ5004A05	#242-21 LOCTITE GENERAL PURPOSE MED. STR	0.001 EA
35CB4504	COND. BOX LID 35 DC & PM FRAMES, STAMPED	1.000 EA
35GS1008	GASKET, CONDUIT BOX LID -- 1/16 LEXIDE #	1.000 EA
51XW0832A07	8-32 X .44, TAPTITE II, HEX WSHR SLTD SE	2.000 EA
RM1003A08	LEAD GROMMET #M2564 ASTRO-TEX	1.000 EA
HW2501D17	KEY, 3/16 SQ X 1.875	1.000 EA
HA7000A04	KEY RETAINER 0.625 DIA SHAFTS	1.000 EA
WD1000A29	3-520140-4 AMP TRM=3.4M/R	2.000 EA
WD1000A32	RECPT TERM,18-22 AWG. INSUL.(4M/RL)AMP#	2.000 EA
WD4102A06	SR-7K-2 HEYCO STRN RELIEF OR 23MP07K20 M	1.000 EA
WD4100A17	PLUG STIMPSON D4036	1.000 EA
MG1000G27	MED CHARCOAL METALLIC GREY 400-0096	0.017 GA

Dealers Industrial Equipment -- Visit <https://DealersElectric.com> or call (908) 688-1966 for all of your electric motor & VFD needs!

Parts List (continued)		
Part Number	Description	Quantity
10XF0440S02	04-40 X 1/8 TYPE F HEX HD STAINLESS STIC	2.000 EA
HA3100A25	THRUBOLT 10-32 X 11.000	4.000 EA
LB1119N	WARNING LABEL	1.000 EA
LC0860	CONN. DIAGRAM-DC(SHUNT WOUND MOTOR)	1.000 EA
MN416A01	TAG-INSTAL-MAINT no wire (1200/bx) 3/19	1.000 EA
NP0111L	NP STD LASER ENGRAVED DC MOTORS, UL CSA	1.000 EA
35PA1000	PKG GRP, PRINT PK1008A06	1.000 EA
LB1417	LABEL CARTON 6X4 PERFORATED BLANK ROLLS	1.000 EA

Dealers Industrial Equipment -- Visit <https://DealersElectric.com> or call (908) 688-1966 for all of your electric motor & VFD needs!



Dealers Industrial Equipment -- Visit <https://DealersElectric.com> or call (908) 688-1966 for all of your electric motor & VFD needs!

