



BALDOR® • RELIANCE

Product Information Packet

P56H6608

.33HP, 1160RPM, 3PH, 60HZ, 56C, 3516M, TENV, F1

| Part Detail | | | | | | | |
|-------------|------|----------------|-------|-------------|----------|---------------|----------------|
| Revision: | N | Status: | INA/A | Change #: | | Proprietary: | No |
| Type: | AC | Prod. Type: | 3516M | Elec. Spec: | 35WGP074 | CD Diagram: | CD0005 |
| Enclosure: | TENV | Mfg Plant: | | Mech. Spec: | 35W532 | Layout: | 35LYW532 |
| Frame: | 56C | Mounting: | F1 | Poles: | 06 | Created Date: | 08-31-2007 |
| Base: | RG | Rotation: | R | Insulation: | H | Eff. Date: | 04-29-2015 |
| Leads: | 9#18 | | | | | Replaced By: | NO REPLACEMENT |
| Literature: | | Elec. Diagram: | | | | | |

Dealers Industrial Equipment -- Visit <https://DealersElectric.com> or call (908) 688-1966 for all of your electric motor & VFD needs!

| Nameplate NP2116L | |
|-------------------|------------------------|
| CAT.NO. | P56H6608 |
| SPEC. | 35W532P074G1 |
| HP | .33 |
| VOLTS | 230/460 |
| AMP | 1.3/.65 |
| RPM | 1160 |
| FRAME | 56C HZ 60 PH 3 |
| SER.F. | 1.00 CODE K DES B CL H |
| NEMA-NOM-EFF | 80 PF 63 |
| RATING | 40C AMB-CONT |
| CC | USABLE AT 208V |
| DE | 6205 ODE 6203 |
| ENCL | TENV SN |

Dealers Industrial Equipment -- Visit <https://DealersElectric.com> or call (908) 688-1966 for all of your electric motor & VFD needs!

| Parts List | | |
|-------------|--|----------|
| Part Number | Description | Quantity |
| SA162203 | SA 35W532P074G1 | 1.000 EA |
| RA150739 | RA 35W532P074G1 | 1.000 EA |
| NS2512A01 | INSULATOR, CONDUIT BOX X | 1.000 EA |
| 35CB3007 | 35 CB CASTING W/.88 DIA. LEAD HOLE | 1.000 EA |
| 36GS1000 | GASKET-CONDUIT BOX, .06 THICK #SV-330 LE | 1.000 EA |
| 51XB1016A07 | 10-16 X 7/16 HXWSSLD SERTYB | 2.000 EA |
| 11XW1032G06 | 10-32 X .38, TAPTITE II, HEX WSHR SLTD U | 1.000 EA |
| 35EP3900T04 | SPL FACE MTD FRONT END PLATE MODEL 35M & | 1.000 EA |
| HW5100A03 | WAVY WASHER (W1543-017) | 1.000 EA |
| 35EP3300A33 | SPL FACE MTD EP -ENCL-205 BRG | 1.000 EA |
| 51XN1032A20 | 10-32 X 1 1/4 HX WS SL SR | 2.000 EA |
| 35FH4802 | THRU-SH ENC COVER (RELIANCE #602455-97) | 1.000 EA |
| 10XN3816A08 | 3/8-16 X 1/2 HEX HD CAP SCREW | 4.000 EA |
| 35CB4521GX | CONDUIT BOX LID KIT | 1.000 EA |
| 51XW0832A07 | 8-32 X .44, TAPTITE II, HEX WSHR SLTD SE | 4.000 EA |
| HW2501D13 | KEY, 3/16 SQ X 1.375 | 1.000 EA |
| HA7000A04 | KEY RETAINER 0.625 DIA SHAFTS | 1.000 EA |
| 85XU0407S04 | 4X1/4 U DRIVE PIN STAINLESS | 2.000 EA |
| MJ1000A02 | GREASE, POLYREX EM EXXON (USe 4824-15A) | 0.050 LB |
| MG1000N49 | MUNSELL 8.5BG 3.57/2.0, GLOSS 30, B/G, | 0.010 GA |
| HA3100A12 | THRUBOLT 10-32 X 7.375 | 4.000 EA |
| LB1119N | WARNING LABEL | 1.000 EA |
| LB1172A01 | CUSTOM MTR CARTON LABEL LASER PRINTER | 1.000 EA |
| LC0145B01 | CONNECTION LABEL | 1.000 EA |

Dealers Industrial Equipment -- Visit <https://DealersElectric.com> or call (908) 688-1966 for all of your electric motor & VFD needs!

| Parts List (continued) | | |
|------------------------|--|----------|
| Part Number | Description | Quantity |
| NP2116L | ALUM SUPER-E UL CSA CC | 1.000 EA |
| 36PA1000 | PKG GRP, PRINT PK1016A06 | 1.000 EA |
| MN416A01 | TAG-INSTAL-MAINT no wire (1200/bx) 11/14 | 1.000 EA |

Dealers Industrial Equipment -- Visit <https://DealersElectric.com> or call (908) 688-1966 for all of your electric motor & VFD needs!

AC Induction Motor Performance Data
Record # 50904 - Typical performance - not guaranteed values

| | | |
|-------------------------------|--------------------|------------------------|
| Winding: 35WGP074-R002 | Type: 3516M | Enclosure: TEFC |
|-------------------------------|--------------------|------------------------|

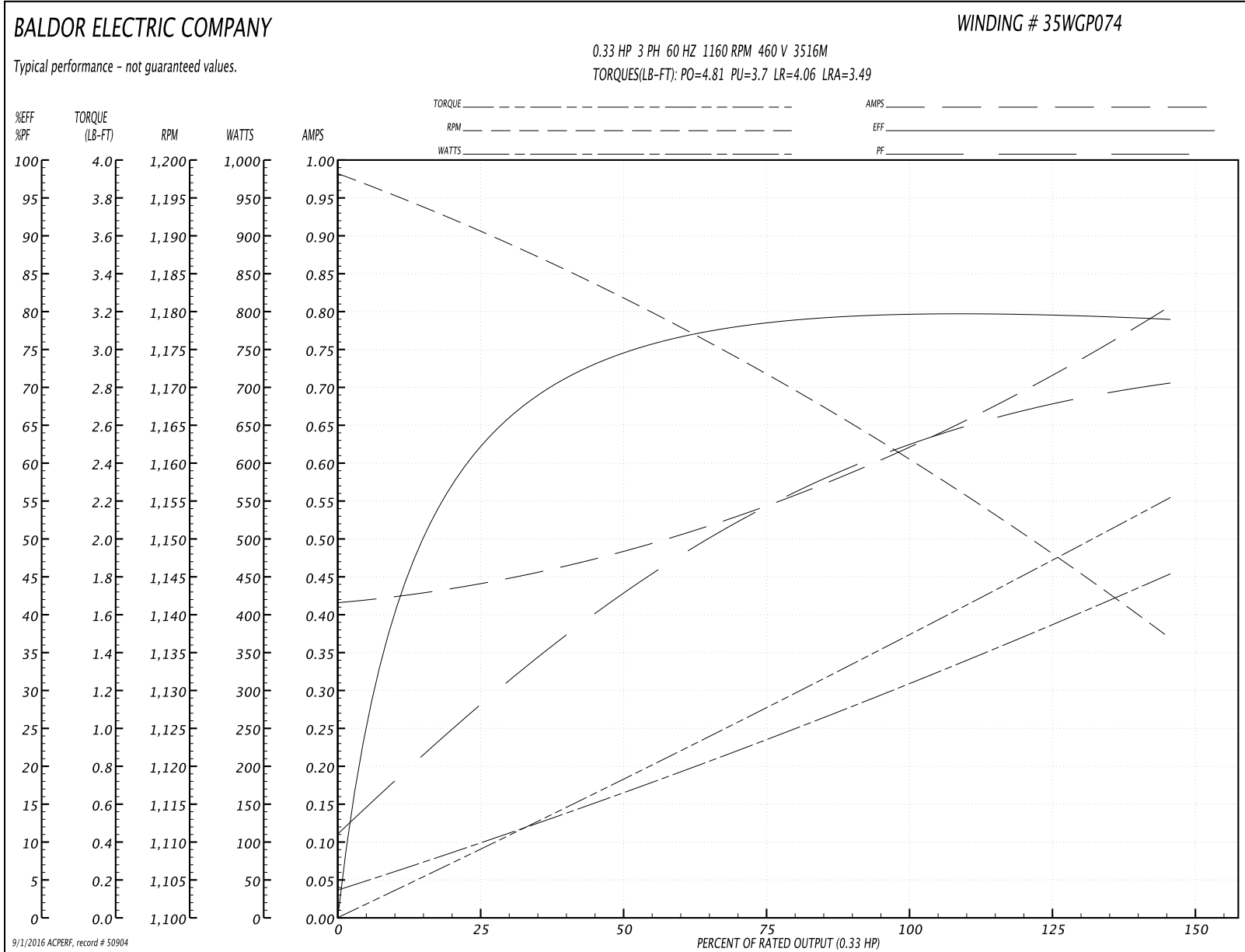
| Nameplate Data | | | | 460 V, 60 Hz: High Voltage Connection | |
|-----------------------|--------------|--------------|----|--|---------------------------|
| Rated Output (HP) | .33 | | | Full Load Torque | 1.48 LB-FT |
| Volts | 230/460 | | | Start Configuration | direct on line |
| Full Load Amps | 1.3/.65 | | | Breakdown Torque | 4.81 LB-FT |
| R.P.M. | 1160 | | | Pull-up Torque | 3.7 LB-FT |
| Hz | 60 | Phase | 3 | Locked-rotor Torque | 4.06 LB-FT |
| NEMA Design Code | B | KVA Code | K | Starting Current | 3.49 A |
| Service Factor (S.F.) | 1 | | | No-load Current | 0.413 A |
| NEMA Nom. Eff. | 80 | Power Factor | 63 | Line-line Res. @ 25°C | 51.5 Ω |
| Rating - Duty | 40C AMB-CONT | | | Temp. Rise @ Rated Load | |
| | | | | Rotor inertia | 0.0949 LB-FT ² |

Load Characteristics 460 V, 60 Hz, 0.33 HP

| % of Rated Load | 25 | 50 | 75 | 100 | 125 | 150 |
|-----------------|-------|-------|-------|-------|------|-------|
| Power Factor | 28 | 44 | 54 | 63 | 67 | 71 |
| Efficiency | 62.3 | 74.7 | 78.3 | 79.8 | 79.9 | 78.8 |
| Speed | 1191 | 1181 | 1172 | 1161 | 1149 | 1137 |
| Line amperes | 0.448 | 0.481 | 0.547 | 0.612 | 0.71 | 0.807 |

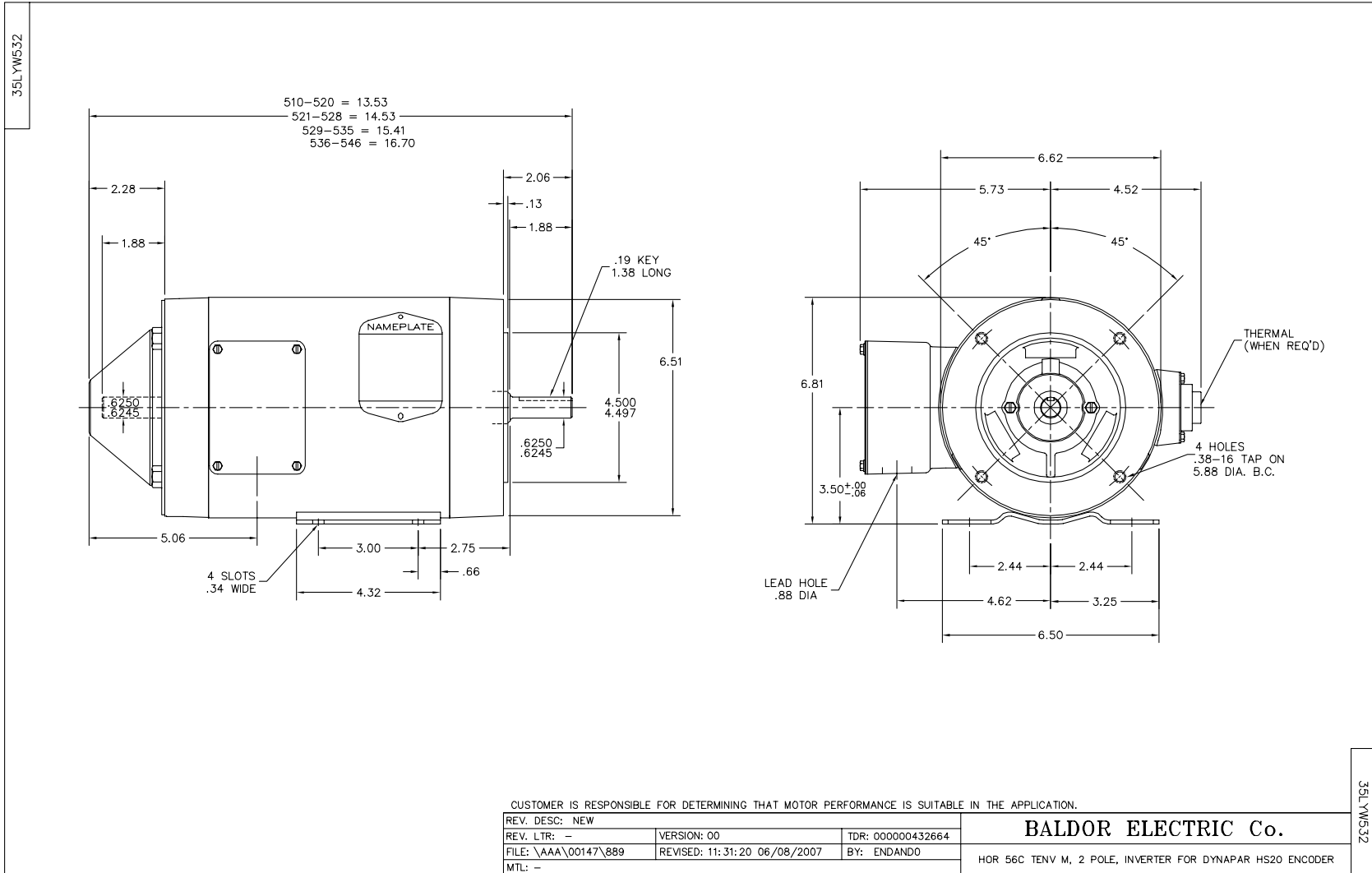
Dealers Industrial Equipment -- Visit <https://DealersElectric.com> or call (908) 688-1966 for all of your electric motor & VFD needs!

Performance Graph at 460V, 60Hz, 0.33HP Typical performance - Not guaranteed values



Dealers Industrial Equipment -- Visit <https://DealersElectric.com> or call (908) 688-1966 for all of your electric motor & VFD needs!

Dealers Industrial Equipment -- Visit <https://DealersElectric.com> or call (908) 688-1966 for all of your electric motor & VFD needs!



Dealers Industrial Equipment -- Visit <https://DealersElectric.com> or call (908) 688-1966 for all of your electric motor & VFD needs!

