



BALDOR® • RELIANCE

Product Information Packet

CFC2614A

.33HP, 1075RPM, 1PH, 60HZ, 48YZ, 1721C, OPAO

Part Detail							
Revision:	L	Status:	INA/A	Change #:		Proprietary:	No
Type:	AC	Prod. Type:	1721C	Elec. Spec:	17WGW420	CD Diagram:	CD0883
Enclosure:	OPAO	Mfg Plant:		Mech. Spec:	17E192	Layout:	17LYE192
Frame:	48YZ	Mounting:	F1	Poles:	06	Created Date:	
Base:	N	Rotation:	RS	Insulation:	B	Eff. Date:	01-14-2010
Leads:	5#18					Replaced By:	
Literature:		Elec. Diagram:					

Nameplate NP1203A15											
CAT.NO.										ENCL	OPAO
SPEC.	17E192W420									FRAME	48YZ
HP	.33										
VOLTS	230										
AMPS	1.9										
RPM	1075										
HZ	60		PH	1		CL	B				
SER.F.	1.00		DES	-		CODE	C				
FL EFF			PF								
RATING	60C AMB-CONT										
SF AMP										USABLE AT 208V	1.9
SER.											
MANUAL	N		AUTO	Y		NONE	N				

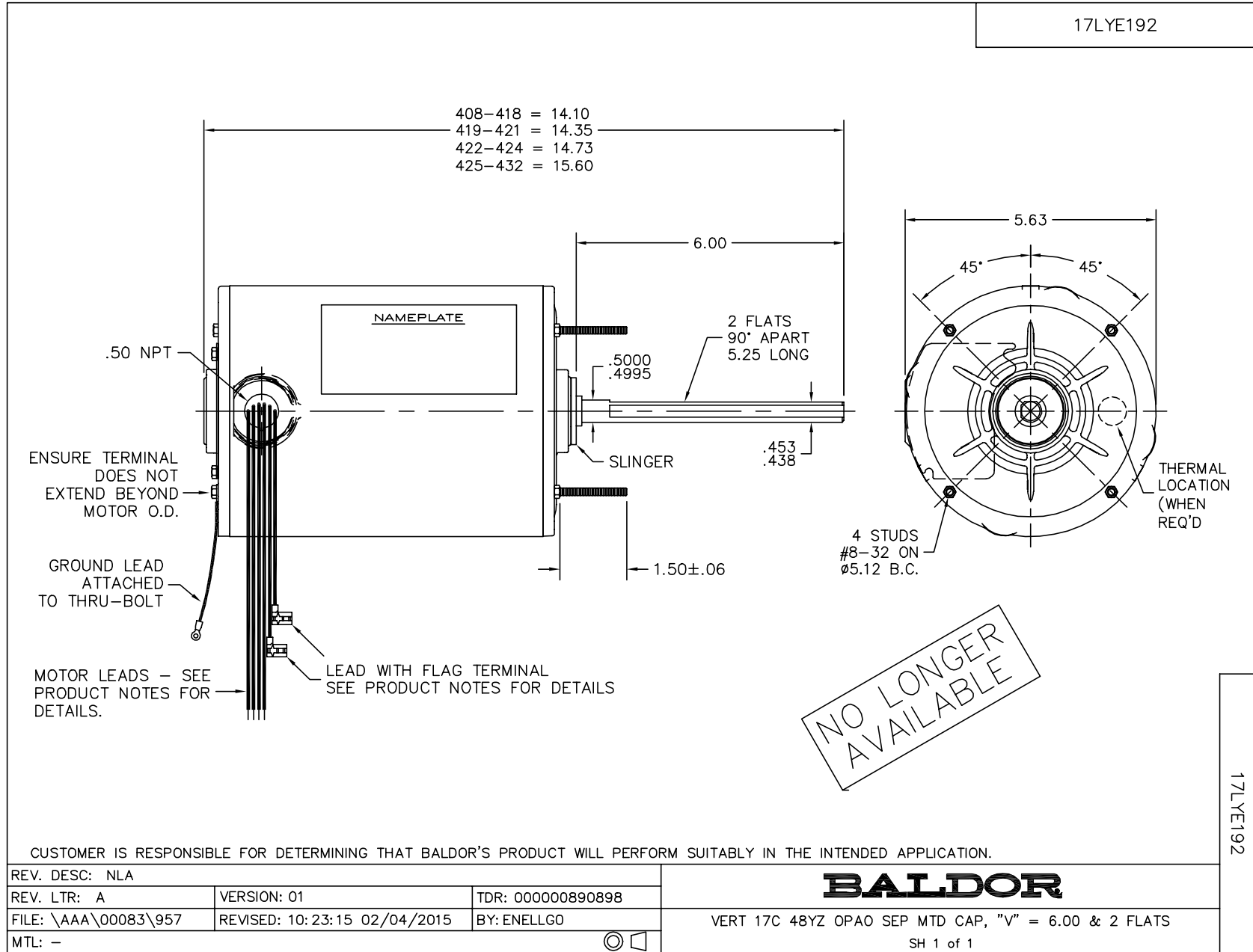
Dealers Industrial Equipment -- Visit <https://DealersElectric.com> or call (908) 688-1966 for all of your electric motor & VFD needs!

Parts List		
Part Number	Description	Quantity
SA072927	SA 17E192W420	1.000 EA
RA066683	RA 17E192W420	1.000 EA
LD5000A49	LEAD ASSY, ML1400DF16 W/(2) #8 RING 17"	1.000 EA
11XT0832G06	8-32 X 3/8 TY 23 TAPPING	1.000 EA
51XW0832A07	8-32 X .44, TAPTITE II, HEX WSHR SLTD SE	4.000 EA
HW5100A03	WAVY WASHER (W1543-017)	1.000 EA
17EP3100C06	PU ENDPLATE, MACH (ENCLOSED)	1.000 EA
XY0832A02	8-32 HEX NUT	4.000 EA
34CB4501SP	TERMINAL BOX LID, STAMPED X (PLATED)	1.000 EA
51XW0832A07	8-32 X .44, TAPTITE II, HEX WSHR SLTD SE	2.000 EA
HA1005A05SP	SLINGER, OD 1.50, ID .659, 203 BRG	1.000 EA
17EP3200AT01	FR ENDPLATE, MACH	1.000 EA
SP1042A01	TERM BOARD, MODEL 17 3 PHASE FOR .75" TH	1.000 EA
HA3169A34	THRUBOLT,#8-32 X 9.406 LG. 2.5 THRD LENG	4.000 EA
LB1125A01	STOCK MTR CARTON LABEL LASER PRINTER	1.000 EA
NP1203A15	NP LABEL 5 LEAD, SV, REV ROT, SEP MTD CA	1.000 EA
MN416A01	TAG-INSTAL-MAINT no wire (1200/bx) 11/14	1.000 EA
27PA1001	PKG GRP, PRINT PK1027A06	1.000 EA
PK3082	STYROFOAM CRADLE	1.000 EA
MG5017	VARNISH - PDG 2500	0.050 GA
LB1417	LABEL CARTON 6X4 PERFORATED BLANK ROLLS	1.000 EA

Dealers Industrial Equipment -- Visit <https://DealersElectric.com> or call (908) 688-1966 for all of your electric motor & VFD needs!

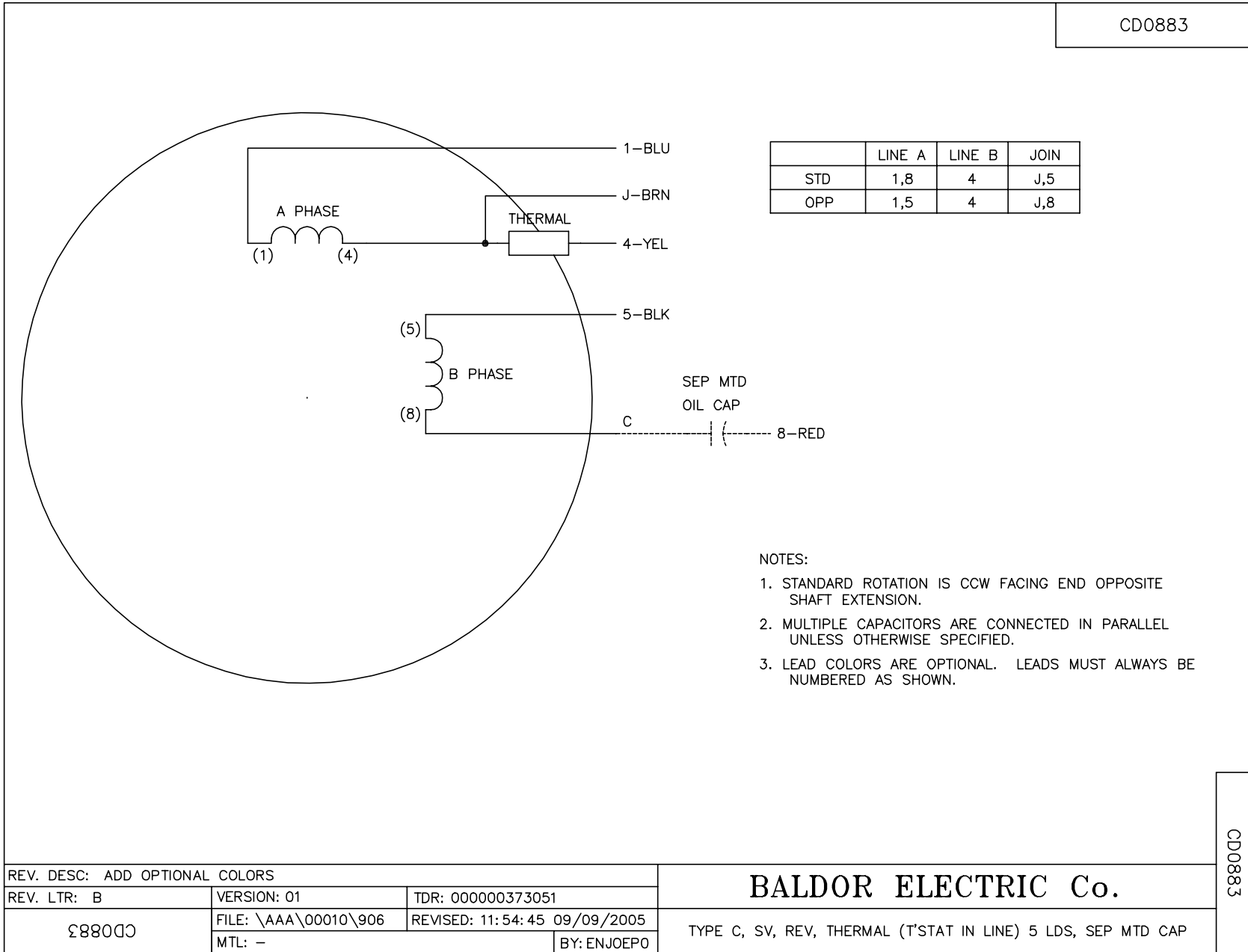
No performance data has been assigned to this product.

Dealers Industrial Equipment -- Visit <https://DealersElectric.com> or call (908) 688-1966 for all of your electric motor & VFD needs!



Dealers Industrial Equipment -- Visit <https://DealersElectric.com> or call (908) 688-1966 for all of your electric motor & VFD needs!

CD0883



CD0883

REV. DESC: ADD OPTIONAL COLORS			
REV. LTR: B	VERSION: 01	TDR: 000000373051	
CD0883	FILE: \AAA\00010\906	REVISED: 11:54:45 09/09/2005	
	MTL: -	BY: ENJOEPO	

BALDOR ELECTRIC Co.

TYPE C, SV, REV, THERMAL (T'STAT IN LINE) 5 LDS, SEP MTD CAP